

BONANZA CREEK ENERGY OPERATING

Well Name: **State Seventy Holes 34-31-6HNB**

Surface Location: State Seventy Holes T-6 Pad Sec.6-T4N-R62W
North American Datum 1983 , US State Plane 1983 , Colorado Northern Zone

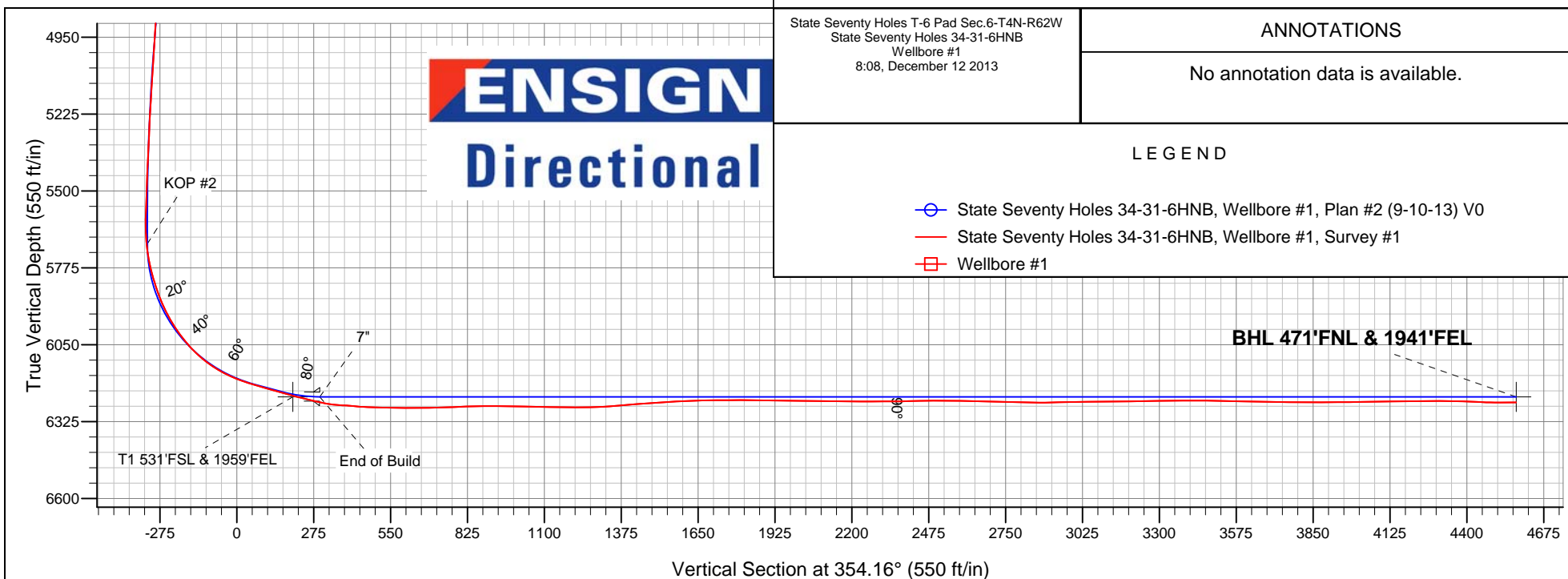
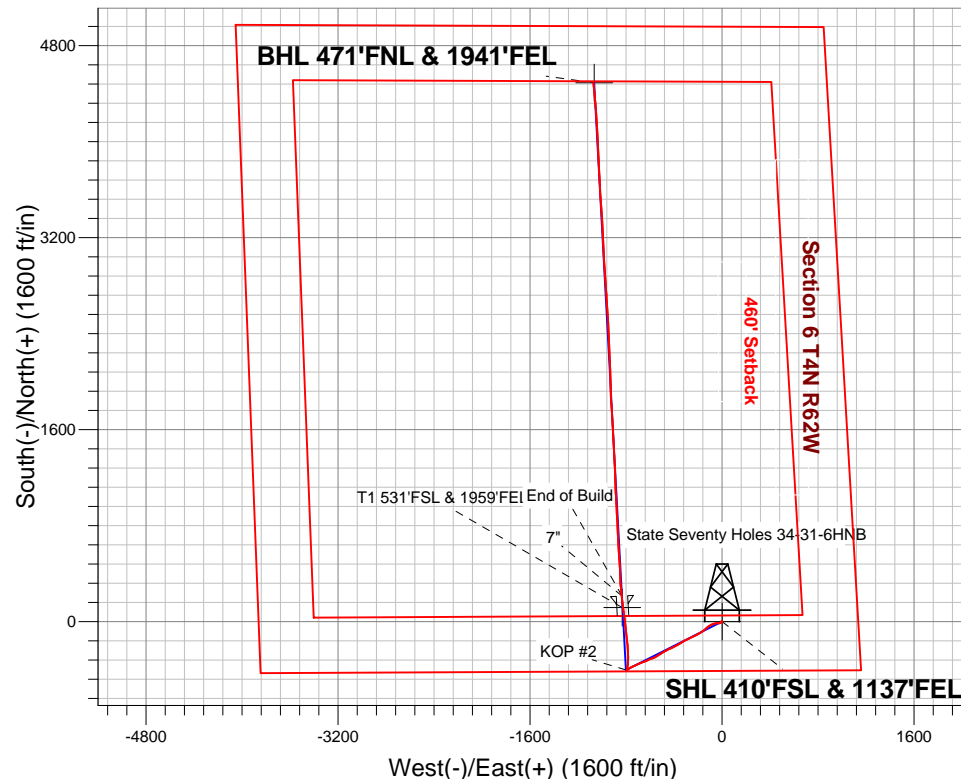
Ground Elevation: 4530.0

+N/-S	+E/-W	Northing	Easting	Latitude	Longitude	Slot
0.0	0.0	1367073.59	3316959.15	40.335440	-104.363000	

RKB - 13' WELL @ 4543.0ft (RKB - 13')

FINAL SURVEY

Projected Bottom Hole Location
10991' MD 6259' TVD 4491' N & 1069' W of SHL
90.6 degree Incl @ 354.3 degree AZM





BONANZA CREEK ENERGY OPERATING

SEC.6-T4N-R62W

State Seventy Holes T-6 Pad Sec.6-T4N-R62W

State Seventy Holes 34-31-6HNB

Wellbore #1

Design: Wellbore #1

Standard Survey Report

12 December, 2013

Company:	BONANZA CREEK ENERGY OPERATING	Local Co-ordinate Reference:	Well State Seventy Holes 34-31-6HNB
Project:	SEC.6-T4N-R62W	TVD Reference:	WELL @ 4543.0ft (RKB - 13')
Site:	State Seventy Holes T-6 Pad Sec.6-T4N-R62W	MD Reference:	WELL @ 4543.0ft (RKB - 13')
Well:	State Seventy Holes 34-31-6HNB	North Reference:	True
Wellbore:	Wellbore #1	Survey Calculation Method:	Minimum Curvature
Design:	Wellbore #1	Database:	Landmark

Survey									
Measured Depth (ft)	Inclination (°)	Azimuth (°)	Vertical Depth (ft)	+N/-S (ft)	+E/-W (ft)	Vertical Section (ft)	Dogleg Rate (°/100ft)	Build Rate (°/100ft)	Turn Rate (°/100ft)
1,065.0	2.20	194.50	1,064.8	-4.5	-7.3	-3.7	0.02	0.00	-0.55
1,156.0	2.80	218.60	1,155.8	-7.9	-9.1	-7.0	1.32	0.66	26.48
1,248.0	5.20	250.90	1,247.5	-11.0	-14.4	-9.5	3.48	2.61	35.11
1,339.0	7.80	271.50	1,338.0	-12.2	-24.5	-9.7	3.79	2.86	22.64
1,430.0	11.30	268.00	1,427.7	-12.4	-39.6	-8.3	3.90	3.85	-3.85
1,556.0	11.70	255.70	1,551.2	-16.0	-64.3	-9.4	1.97	0.32	-9.76
1,684.0	12.80	242.70	1,676.3	-25.7	-89.5	-16.5	2.31	0.86	-10.16
1,810.0	12.10	231.40	1,799.3	-40.3	-112.2	-28.7	2.01	-0.56	-8.97
1,938.0	12.20	227.20	1,924.5	-57.9	-132.6	-44.1	0.69	0.08	-3.28
2,065.0	12.00	232.30	2,048.7	-75.1	-152.9	-59.1	0.86	-0.16	4.02
2,192.0	11.10	237.40	2,173.1	-89.7	-173.7	-71.6	1.07	-0.71	4.02
2,319.0	11.90	240.50	2,297.5	-102.8	-195.4	-82.4	0.80	0.63	2.44
2,446.0	13.60	244.60	2,421.4	-115.6	-220.3	-92.6	1.52	1.34	3.23
2,574.0	13.80	247.10	2,545.8	-128.0	-247.9	-102.2	0.49	0.16	1.95
2,702.0	13.00	243.40	2,670.3	-140.4	-274.9	-111.7	0.92	-0.63	-2.89
2,830.0	13.10	240.00	2,795.0	-154.1	-300.3	-122.8	0.60	0.08	-2.66
2,959.0	13.10	241.30	2,920.6	-168.4	-325.8	-134.4	0.23	0.00	1.01
3,087.0	12.50	237.90	3,045.4	-182.8	-350.2	-146.2	0.75	-0.47	-2.66
3,215.0	11.30	243.00	3,170.7	-195.8	-373.2	-156.9	1.25	-0.94	3.98
3,343.0	11.80	242.10	3,296.1	-207.6	-395.9	-166.3	0.42	0.39	-0.70
3,471.0	14.80	244.90	3,420.6	-220.7	-422.3	-176.6	2.40	2.34	2.19
3,600.0	15.70	243.20	3,545.1	-235.6	-452.8	-188.3	0.78	0.70	-1.32
3,728.0	14.50	239.70	3,668.7	-251.5	-482.1	-201.1	1.18	-0.94	-2.73
3,856.0	13.60	236.70	3,792.9	-267.8	-508.5	-214.7	0.90	-0.70	-2.34
3,985.0	12.70	239.50	3,918.5	-283.3	-533.4	-227.6	0.85	-0.70	2.17
4,113.0	11.90	244.10	4,043.5	-296.2	-557.4	-238.0	0.99	-0.63	3.59
4,241.0	11.00	248.60	4,169.0	-306.5	-580.6	-245.8	0.99	-0.70	3.52
4,370.0	11.00	248.80	4,295.6	-315.4	-603.5	-252.4	0.03	0.00	0.16
4,498.0	11.50	247.60	4,421.2	-324.7	-626.7	-259.3	0.43	0.39	-0.94
4,627.0	11.70	248.80	4,547.5	-334.3	-650.8	-266.4	0.24	0.16	0.93
4,755.0	14.50	247.60	4,672.2	-345.1	-677.7	-274.4	2.20	2.19	-0.94
4,883.0	12.40	244.60	4,796.7	-357.1	-705.0	-283.6	1.73	-1.64	-2.34
5,012.0	11.20	247.60	4,922.9	-367.8	-729.1	-291.8	1.04	-0.93	2.33
5,140.0	10.20	242.00	5,048.7	-377.9	-750.6	-299.6	1.13	-0.78	-4.38
5,269.0	7.70	239.80	5,176.1	-387.6	-768.1	-307.5	1.96	-1.94	-1.71
5,397.0	5.60	235.10	5,303.3	-395.5	-780.7	-314.1	1.69	-1.64	-3.67
5,525.0	3.70	226.70	5,430.8	-401.9	-788.8	-319.6	1.57	-1.48	-6.56
5,654.0	2.20	194.00	5,559.7	-407.1	-792.4	-324.5	1.70	-1.16	-25.35
5,696.0	1.30	186.90	5,601.7	-408.4	-792.7	-325.7	2.20	-2.14	-16.90
5,739.0	2.00	10.40	5,644.6	-408.1	-792.6	-325.5	7.67	1.63	-410.47
5,782.0	5.80	10.60	5,687.5	-405.3	-792.1	-322.6	8.84	8.84	0.47
5,825.0	9.60	10.80	5,730.1	-399.6	-791.0	-317.1	8.84	8.84	0.47
5,867.0	13.20	8.00	5,771.3	-391.4	-789.7	-309.1	8.67	8.57	-6.67
5,910.0	16.80	10.40	5,812.8	-380.4	-787.8	-298.4	8.49	8.37	5.58
5,953.0	19.50	9.20	5,853.7	-367.2	-785.6	-285.5	6.34	6.28	-2.79
5,996.0	23.10	4.60	5,893.8	-351.7	-783.8	-270.2	9.22	8.37	-10.70
6,038.0	27.10	2.00	5,931.8	-334.0	-782.8	-252.7	9.88	9.52	-6.19
6,081.0	30.90	0.80	5,969.4	-313.1	-782.3	-232.0	8.94	8.84	-2.79
6,124.0	35.10	358.80	6,005.4	-289.7	-782.4	-208.7	10.09	9.77	-4.65
6,167.0	39.80	358.00	6,039.6	-263.6	-783.1	-182.6	10.99	10.93	-1.86
6,210.0	45.00	356.60	6,071.3	-234.6	-784.5	-153.7	12.29	12.09	-3.26
6,252.0	50.10	354.60	6,099.7	-203.8	-786.9	-122.7	12.64	12.14	-4.76
6,295.0	55.80	353.90	6,125.5	-169.6	-790.3	-88.4	13.32	13.26	-1.63
6,338.0	61.40	354.80	6,147.9	-133.1	-793.9	-51.7	13.15	13.02	2.09

Company:	BONANZA CREEK ENERGY OPERATING	Local Co-ordinate Reference:	Well State Seventy Holes 34-31-6HNB
Project:	SEC.6-T4N-R62W	TVD Reference:	WELL @ 4543.0ft (RKB - 13')
Site:	State Seventy Holes T-6 Pad Sec.6-T4N-R62W	MD Reference:	WELL @ 4543.0ft (RKB - 13')
Well:	State Seventy Holes 34-31-6HNB	North Reference:	True
Wellbore:	Wellbore #1	Survey Calculation Method:	Minimum Curvature
Design:	Wellbore #1	Database:	Landmark

Survey

Measured Depth (ft)	Inclination (°)	Azimuth (°)	Vertical Depth (ft)	+N/-S (ft)	+E/-W (ft)	Vertical Section (ft)	Dogleg Rate (°/100ft)	Build Rate (°/100ft)	Turn Rate (°/100ft)
6,381.0	67.10	354.30	6,166.6	-94.6	-797.6	-13.0	13.30	13.26	-1.16
6,424.0	71.10	353.00	6,182.0	-54.7	-802.1	27.2	9.72	9.30	-3.02
6,466.0	73.90	353.60	6,194.6	-14.9	-806.7	67.2	6.80	6.67	1.43
6,509.0	74.10	353.00	6,206.4	26.2	-811.6	108.5	1.42	0.47	-1.40
6,551.0	74.40	352.30	6,217.8	66.3	-816.7	149.0	1.76	0.71	-1.67
6,594.0	74.80	352.50	6,229.3	107.4	-822.2	190.4	1.03	0.93	0.47
6,605.7	74.99	352.55	6,232.3	118.5	-823.7	201.7	1.69	1.63	0.47
T1 531'FSL & 1959'FEL									
6,637.0	75.50	352.70	6,240.3	148.6	-827.6	231.9	1.69	1.63	0.46
6,680.0	76.70	353.80	6,250.6	190.0	-832.5	273.7	3.74	2.79	2.56
6,722.0	79.50	354.60	6,259.3	230.9	-836.6	314.8	6.92	6.67	1.90
6,742.0	81.70	355.00	6,262.5	250.6	-838.4	334.5	11.18	11.00	2.00
6,797.0	89.00	353.00	6,267.0	305.0	-844.1	389.3	13.76	13.27	-3.64
6,805.0	84.30	357.10	6,267.5	313.0	-844.8	397.3	77.90	-58.75	51.25
6,848.0	85.70	357.60	6,271.2	355.8	-846.8	440.0	3.46	3.26	1.16
6,890.0	88.00	357.40	6,273.5	397.7	-848.6	481.9	5.50	5.48	-0.48
6,933.0	89.20	356.90	6,274.6	440.6	-850.8	524.8	3.02	2.79	-1.16
6,975.0	89.40	356.70	6,275.1	482.5	-853.1	566.8	0.67	0.48	-0.48
7,017.0	89.20	356.40	6,275.6	524.5	-855.7	608.7	0.86	-0.48	-0.71
7,060.0	89.80	356.20	6,276.0	567.4	-858.4	651.7	1.47	1.40	-0.47
7,102.0	91.40	356.70	6,275.5	609.3	-861.0	693.7	3.99	3.81	1.19
7,145.0	92.00	356.20	6,274.2	652.2	-863.7	736.6	1.82	1.40	-1.16
7,187.0	92.40	356.70	6,272.6	694.1	-866.3	778.5	1.52	0.95	1.19
7,230.0	91.90	357.60	6,271.0	737.0	-868.4	821.4	2.39	-1.16	2.09
7,272.0	91.80	357.80	6,269.7	778.9	-870.1	863.3	0.53	-0.24	0.48
7,315.0	90.70	357.30	6,268.7	821.9	-871.9	906.3	2.81	-2.56	-1.16
7,358.0	88.50	357.30	6,269.0	864.8	-874.0	949.2	5.12	-5.12	0.00
7,401.0	88.20	357.10	6,270.3	907.8	-876.1	992.1	0.84	-0.70	-0.47
7,444.0	88.60	356.90	6,271.5	950.7	-878.3	1,035.0	1.04	0.93	-0.47
7,486.0	89.20	357.10	6,272.3	992.6	-880.5	1,077.0	1.51	1.43	0.48
7,529.0	89.60	356.70	6,272.7	1,035.5	-882.8	1,119.9	1.32	0.93	-0.93
7,572.0	89.60	356.90	6,273.0	1,078.5	-885.2	1,162.9	0.47	0.00	0.47
7,615.0	89.30	356.90	6,273.4	1,121.4	-887.6	1,205.8	0.70	-0.70	0.00
7,657.0	90.10	357.60	6,273.7	1,163.4	-889.6	1,247.8	2.53	1.90	1.67
7,700.0	92.50	358.30	6,272.7	1,206.3	-891.1	1,290.7	5.81	5.58	1.63
7,743.0	94.20	358.10	6,270.2	1,249.2	-892.5	1,333.5	3.98	3.95	-0.47
7,786.0	94.50	358.50	6,266.9	1,292.1	-893.7	1,376.2	1.16	0.70	0.93
7,829.0	94.70	358.30	6,263.5	1,334.9	-894.9	1,419.0	0.66	0.47	-0.47
7,871.0	94.80	357.80	6,260.0	1,376.8	-896.4	1,460.8	1.21	0.24	-1.19
7,914.0	94.40	357.60	6,256.5	1,419.6	-898.1	1,503.5	1.04	-0.93	-0.47
7,957.0	92.80	357.10	6,253.8	1,462.5	-900.1	1,546.4	3.90	-3.72	-1.16
8,000.0	91.90	356.20	6,252.1	1,505.3	-902.6	1,589.3	2.96	-2.09	-2.09
8,043.0	92.50	356.20	6,250.4	1,548.2	-905.4	1,632.2	1.40	1.40	0.00
8,085.0	91.20	356.00	6,249.1	1,590.1	-908.3	1,674.2	3.13	-3.10	-0.48
8,128.0	90.30	355.70	6,248.5	1,633.0	-911.4	1,717.2	2.21	-2.09	-0.70
8,171.0	90.70	357.10	6,248.1	1,675.9	-914.1	1,760.1	3.39	0.93	3.26
8,214.0	90.30	356.70	6,247.7	1,718.8	-916.4	1,803.1	1.32	-0.93	-0.93
8,257.0	88.80	356.40	6,248.1	1,761.7	-919.0	1,846.0	3.56	-3.49	-0.70
8,299.0	88.70	357.10	6,249.0	1,803.7	-921.4	1,888.0	1.68	-0.24	1.67
8,342.0	89.20	357.60	6,249.8	1,846.6	-923.4	1,930.9	1.64	1.16	1.16
8,385.0	89.30	358.00	6,250.4	1,889.6	-925.0	1,973.8	0.96	0.23	0.93
8,428.0	90.00	358.10	6,250.6	1,932.6	-926.5	2,016.7	1.64	1.63	0.23
8,470.0	90.10	357.80	6,250.6	1,974.5	-928.0	2,058.6	0.75	0.24	-0.71
8,513.0	88.60	357.80	6,251.1	2,017.5	-929.6	2,101.5	3.49	-3.49	0.00

Company:	BONANZA CREEK ENERGY OPERATING	Local Co-ordinate Reference:	Well State Seventy Holes 34-31-6HNB
Project:	SEC.6-T4N-R62W	TVD Reference:	WELL @ 4543.0ft (RKB - 13')
Site:	State Seventy Holes T-6 Pad Sec.6-T4N-R62W	MD Reference:	WELL @ 4543.0ft (RKB - 13')
Well:	State Seventy Holes 34-31-6HNB	North Reference:	True
Wellbore:	Wellbore #1	Survey Calculation Method:	Minimum Curvature
Design:	Wellbore #1	Database:	Landmark

Survey									
Measured Depth (ft)	Inclination (°)	Azimuth (°)	Vertical Depth (ft)	+N/-S (ft)	+E/-W (ft)	Vertical Section (ft)	Dogleg Rate (°/100ft)	Build Rate (°/100ft)	Turn Rate (°/100ft)
8,556.0	89.00	358.00	6,252.0	2,060.5	-931.2	2,144.4	1.04	0.93	0.47
8,599.0	89.80	358.50	6,252.4	2,103.4	-932.5	2,187.3	2.19	1.86	1.16
8,642.0	89.50	359.30	6,252.7	2,146.4	-933.4	2,230.2	1.99	-0.70	1.86
8,684.0	90.40	358.50	6,252.7	2,188.4	-934.2	2,272.0	2.87	2.14	-1.90
8,727.0	90.50	358.70	6,252.4	2,231.4	-935.2	2,314.9	0.52	0.23	0.47
8,770.0	90.00	357.80	6,252.2	2,274.4	-936.5	2,357.8	2.39	-1.16	-2.09
8,813.0	91.20	356.90	6,251.7	2,317.3	-938.5	2,400.7	3.49	2.79	-2.09
8,855.0	91.40	356.70	6,250.8	2,359.2	-940.9	2,442.7	0.67	0.48	-0.48
8,898.0	90.50	356.40	6,250.1	2,402.2	-943.4	2,485.6	2.21	-2.09	-0.70
8,941.0	90.00	356.40	6,249.9	2,445.1	-946.1	2,528.6	1.16	-1.16	0.00
8,984.0	88.90	356.20	6,250.3	2,488.0	-948.9	2,571.6	2.60	-2.56	-0.47
9,027.0	89.30	356.00	6,251.0	2,530.9	-951.8	2,614.5	1.04	0.93	-0.47
9,069.0	88.20	356.60	6,251.9	2,572.8	-954.5	2,656.5	2.98	-2.62	1.43
9,112.0	88.50	356.60	6,253.1	2,615.7	-957.1	2,699.4	0.70	0.70	0.00
9,155.0	88.50	356.90	6,254.3	2,658.6	-959.5	2,742.4	0.70	0.00	0.70
9,198.0	88.60	357.30	6,255.3	2,701.5	-961.7	2,785.3	0.96	0.23	0.93
9,241.0	89.00	356.20	6,256.2	2,744.5	-964.1	2,828.3	2.72	0.93	-2.56
9,283.0	89.00	355.70	6,257.0	2,786.3	-967.1	2,870.2	1.19	0.00	-1.19
9,326.0	90.70	356.20	6,257.1	2,829.2	-970.2	2,913.2	4.12	3.95	1.16
9,369.0	91.60	356.00	6,256.2	2,872.1	-973.1	2,956.2	2.14	2.09	-0.47
9,412.0	92.20	356.40	6,254.8	2,915.0	-975.9	2,999.1	1.68	1.40	0.93
9,455.0	91.80	356.40	6,253.3	2,957.9	-978.6	3,042.1	0.93	-0.93	0.00
9,497.0	90.00	356.40	6,252.6	2,999.8	-981.3	3,084.0	4.29	-4.29	0.00
9,540.0	89.60	355.90	6,252.8	3,042.7	-984.1	3,127.0	1.49	-0.93	-1.16
9,583.0	90.10	357.30	6,252.9	3,085.6	-986.7	3,170.0	3.46	1.16	3.26
9,626.0	91.30	358.10	6,252.4	3,128.6	-988.4	3,212.9	3.35	2.79	1.86
9,668.0	91.50	358.50	6,251.4	3,170.6	-989.7	3,254.8	1.06	0.48	0.95
9,711.0	90.90	357.30	6,250.5	3,213.5	-991.2	3,297.7	3.12	-1.40	-2.79
9,754.0	90.50	356.60	6,249.9	3,256.5	-993.5	3,340.6	1.87	-0.93	-1.63
9,797.0	90.30	356.20	6,249.6	3,299.4	-996.2	3,383.6	1.04	-0.47	-0.93
9,839.0	90.40	356.60	6,249.4	3,341.3	-998.9	3,425.5	0.98	0.24	0.95
9,882.0	89.60	356.60	6,249.4	3,384.2	-1,001.4	3,468.5	1.86	-1.86	0.00
9,925.0	88.20	356.20	6,250.2	3,427.1	-1,004.1	3,511.4	3.39	-3.26	-0.93
9,968.0	88.40	356.00	6,251.5	3,470.0	-1,007.0	3,554.4	0.66	0.47	-0.47
10,011.0	88.50	355.90	6,252.6	3,512.9	-1,010.1	3,597.4	0.33	0.23	-0.23
10,053.0	89.30	356.60	6,253.4	3,554.8	-1,012.8	3,639.3	2.53	1.90	1.67
10,096.0	89.00	356.60	6,254.1	3,597.7	-1,015.4	3,682.3	0.70	-0.70	0.00
10,139.0	89.30	356.90	6,254.7	3,640.6	-1,017.8	3,725.2	0.99	0.70	0.70
10,182.0	89.80	357.30	6,255.1	3,683.6	-1,020.0	3,768.2	1.49	1.16	0.93
10,224.0	89.40	357.40	6,255.3	3,725.5	-1,021.9	3,810.1	0.98	-0.95	0.24
10,267.0	90.00	357.30	6,255.6	3,768.5	-1,023.9	3,853.0	1.41	1.40	-0.23
10,310.0	90.40	356.90	6,255.4	3,811.4	-1,026.1	3,896.0	1.32	0.93	-0.93
10,353.0	90.20	357.10	6,255.2	3,854.4	-1,028.3	3,938.9	0.66	-0.47	0.47
10,395.0	90.20	357.10	6,255.1	3,896.3	-1,030.5	3,980.9	0.00	0.00	0.00
10,438.0	91.00	358.10	6,254.6	3,939.3	-1,032.3	4,023.8	2.98	1.86	2.33
10,481.0	91.40	358.50	6,253.7	3,982.2	-1,033.5	4,066.7	1.32	0.93	0.93
10,526.0	91.30	357.40	6,252.6	4,027.2	-1,035.2	4,111.6	2.45	-0.22	-2.44
10,571.0	90.30	356.00	6,252.0	4,072.1	-1,037.7	4,156.5	3.82	-2.22	-3.11
10,615.0	90.00	355.50	6,251.9	4,116.0	-1,041.0	4,200.5	1.33	-0.68	-1.14
10,660.0	90.70	356.00	6,251.6	4,160.9	-1,044.3	4,245.5	1.91	1.56	1.11
10,705.0	90.40	356.40	6,251.2	4,205.8	-1,047.3	4,290.5	1.11	-0.67	0.89
10,750.0	89.60	356.20	6,251.2	4,250.7	-1,050.2	4,335.4	1.83	-1.78	-0.44
10,794.0	87.70	355.70	6,252.2	4,294.6	-1,053.3	4,379.4	4.47	-4.32	-1.14
10,839.0	87.70	355.30	6,254.0	4,339.4	-1,056.9	4,424.3	0.89	0.00	-0.89

Company:	BONANZA CREEK ENERGY OPERATING	Local Co-ordinate Reference:	Well State Seventy Holes 34-31-6HNB
Project:	SEC.6-T4N-R62W	TVD Reference:	WELL @ 4543.0ft (RKB - 13')
Site:	State Seventy Holes T-6 Pad Sec.6-T4N-R62W	MD Reference:	WELL @ 4543.0ft (RKB - 13')
Well:	State Seventy Holes 34-31-6HNB	North Reference:	True
Wellbore:	Wellbore #1	Survey Calculation Method:	Minimum Curvature
Design:	Wellbore #1	Database:	Landmark

Survey									
Measured Depth (ft)	Inclination (°)	Azimuth (°)	Vertical Depth (ft)	+N/-S (ft)	+E/-W (ft)	Vertical Section (ft)	Dogleg Rate (°/100ft)	Build Rate (°/100ft)	Turn Rate (°/100ft)
10,884.0	87.90	354.80	6,255.8	4,384.2	-1,060.7	4,469.3	1.20	0.44	-1.11
10,929.0	90.10	354.50	6,256.5	4,429.0	-1,064.9	4,514.3	4.93	4.89	-0.67
10,936.0	90.60	354.30	6,256.5	4,435.9	-1,065.6	4,521.3	7.69	7.14	-2.86
10,991.0	90.60	354.30	6,255.9	4,490.7	-1,071.1	4,576.3	0.00	0.00	0.00
BHL 470'FNL & 1937'FEL									

Design Targets									
Target Name	Dip Angle (°)	Dip Dir. (°)	TVD (ft)	+N/-S (ft)	+E/-W (ft)	Northing (ft)	Easting (ft)	Latitude	Longitude
- hit/miss target									
- Shape									
SHL 410'FSL & 1134'I	0.00	0.00	1.0	0.0	2.8	1,367,073.65	3,316,961.94	40.335440	-104.362990
- actual wellpath misses target center by 2.8ft at 1.0ft MD (1.0 TVD, 0.0 N, 0.0 E)									
- Point									
BHL 470'FNL & 1937'	0.00	0.00	6,236.0	4,492.0	-1,064.8	1,371,551.35	3,315,836.92	40.347770	-104.366820
- actual wellpath misses target center by 20.9ft at 10991.0ft MD (6255.9 TVD, 4490.7 N, -1071.1 E)									
- Point									
T1 531'FSL & 1959'FE	0.00	0.00	6,236.0	116.6	-830.8	1,367,179.54	3,316,126.98	40.335760	-104.365980
- actual wellpath misses target center by 8.2ft at 6605.7ft MD (6232.3 TVD, 118.5 N, -823.7 E)									
- Point									

Checked By: _____ Approved By: _____ Date: _____