

BONANZA CREEK ENERGY OPERATING

Well Name: **State Seventy Holes T-P-6HNB**

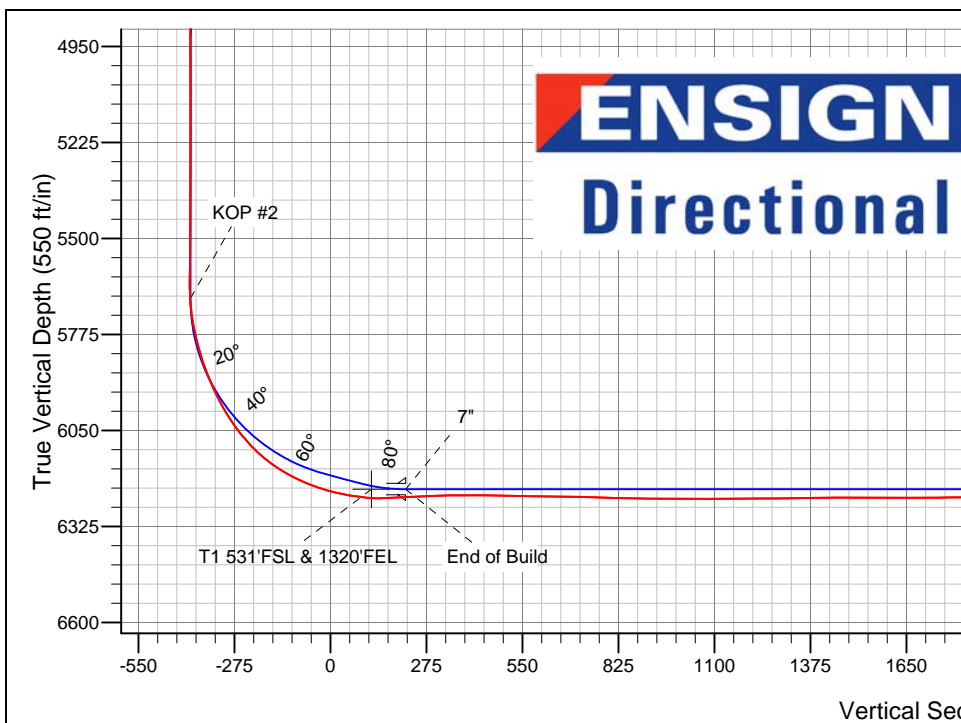
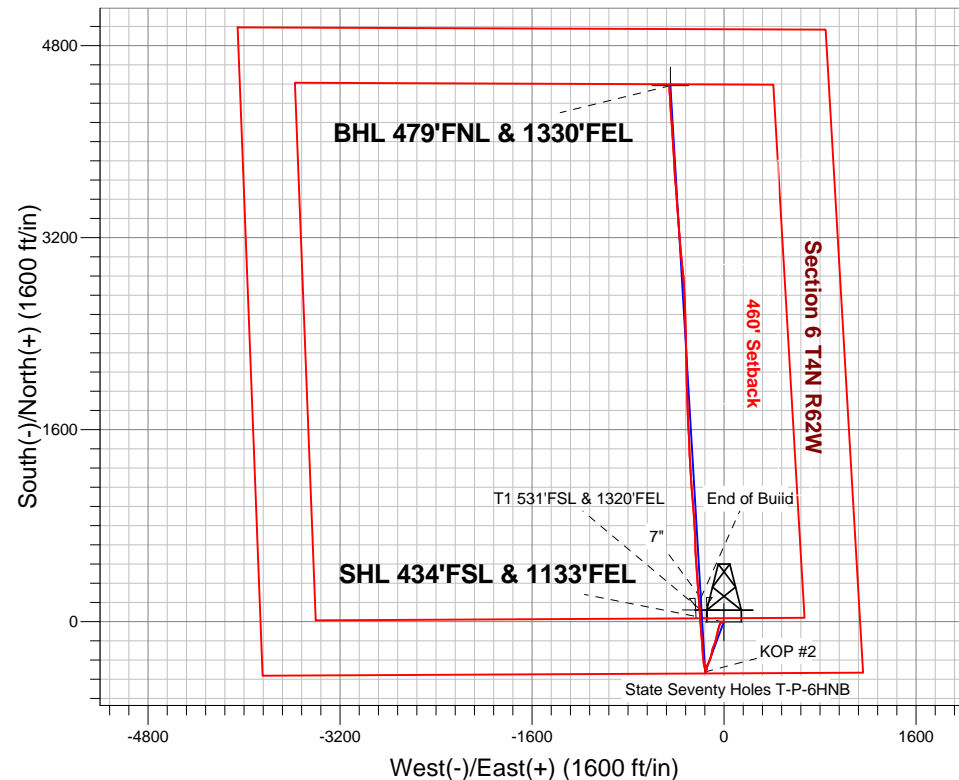
Surface Location: State Seventy Holes T-6 Pad Sec.6-T4N-R62W
North American Datum 1983 , US State Plane 1983 , Colorado Northern Zone
Ground Elevation: 4530.0

+N/-S	+E/-W	Northing	Easting	Latitude	Longitude	Slot
0.0	0.0	1367095.47	3316958.87	40.335500	-104.363000	

Ensign Rig #136 - RKB - 13'WELL @ 4543.0ft (Ensign Rig #136 - RKB - 13')

FINAL SURVEY

Projected Bottom Hole Location
10920' MD 6241' TVD 4457' N & 456' W of SHL
90.1 degree Incl @ 356.0 degree AZM



State Seventy Holes T-6 Pad Sec.6-T4N-R62W
State Seventy Holes T-P-6HNB
Wellbore #1
7:51, December 12 2013

ANNOTATIONS

No annotation data is available.

LEGEND

- State Seventy Holes T-P-6HNB, Wellbore #1, Plan #2 (9-02-13) V0
- State Seventy Holes T-P-6HNB, Wellbore #1, Survey #1
- Wellbore #1

BHL 479'FNL & 1330'FEL



BONANZA CREEK ENERGY OPERATING

SEC.6-T4N-R62W

State Seventy Holes T-6 Pad Sec.6-T4N-R62W

State Seventy Holes T-P-6HNB

Wellbore #1

Design: Wellbore #1

Standard Survey Report

12 December, 2013

Company:	BONANZA CREEK ENERGY OPERATING	Local Co-ordinate Reference:	Well State Seventy Holes T-P-6HNB
Project:	SEC.6-T4N-R62W	TVD Reference:	WELL @ 4543.0ft (Ensign Rig #136 - RKB - 13')
Site:	State Seventy Holes T-6 Pad Sec.6-T4N-R62W	MD Reference:	WELL @ 4543.0ft (Ensign Rig #136 - RKB - 13')
Well:	State Seventy Holes T-P-6HNB	North Reference:	True
Wellbore:	Wellbore #1	Survey Calculation Method:	Minimum Curvature
Design:	Wellbore #1	Database:	Landmark

Project	SEC.6-T4N-R62W, Weld County, CO		
Map System:	US State Plane 1983	System Datum:	Mean Sea Level
Geo Datum:	North American Datum 1983		Using Well Reference Point
Map Zone:	Colorado Northern Zone		Using geodetic scale factor

Site		State Seventy Holes T-6 Pad Sec.6-T4N-R62W			
Site Position:		Northing:	1,367,091.83ft	Latitude:	40.335490
From:	Lat/Long	Easting:	3,316,958.92ft	Longitude:	-104.363000
Position Uncertainty:	0.0 ft	Slot Radius:	"	Grid Convergence:	0.73 °

Well	State Seventy Holes T-P-6HNB					
Well Position	+N/-S	0.0 ft	Northing:	1,367,095.47 ft	Latitude:	40.335500
	+E/-W	0.0 ft	Easting:	3,316,958.87 ft	Longitude:	-104.363000
Position Uncertainty		0.0 ft	Wellhead Elevation:	ft	Ground Level:	4,530.0 ft

Wellbore	Wellbore #1				
Magnetics	Model Name	Sample Date	Declination (°)	Dip Angle (°)	Field Strength (nT)
	IGRF2010	9/2/2013	8.34	66.99	52,908

Design	Wellbore #1				
Audit Notes:					
Version:	1.0	Phase:	ACTUAL	Tie On Depth:	0.0
Vertical Section:	Depth From (TVD) (ft)	+N/-S (ft)	+E/-W (ft)	Direction (°)	
	0.0	0.0	0.0	354.30	

Survey Program	Date	12/12/2013			
From (ft)	To (ft)	Survey (Wellbore)	Tool Name	Description	
104.0	10,920.0	Survey #1 (Wellbore #1)	MWD	MWD - Standard	

Survey										
Measured Depth (ft)	Inclination (°)	Azimuth (°)	Vertical Depth (ft)	+N/-S (ft)	+E/-W (ft)	Vertical Section (ft)	Dogleg Rate (°/100ft)	Build Rate (°/100ft)	Turn Rate (°/100ft)	
0.0	0.00	0.00	0.0	0.0	0.0	0.0	0.00	0.00	0.00	
1.0	0.00	215.20	1.0	0.0	0.0	0.0	0.29	0.29	0.00	
SHL 430'FSL & 1133'FEL										
104.0	0.30	215.20	104.0	-0.2	-0.2	-0.2	0.29	0.29	0.00	
221.0	0.40	252.30	221.0	-0.6	-0.7	-0.5	0.21	0.09	31.71	
425.0	0.70	260.80	425.0	-1.0	-2.6	-0.7	0.15	0.15	4.17	
570.0	1.00	272.70	570.0	-1.1	-4.8	-0.6	0.24	0.21	8.21	
694.0	1.00	276.40	694.0	-0.9	-6.9	-0.2	0.05	0.00	2.98	
819.0	1.00	269.60	818.9	-0.8	-9.1	0.1	0.09	0.00	-5.44	
943.0	1.00	275.50	942.9	-0.7	-11.3	0.4	0.08	0.00	4.76	
1,066.0	1.00	277.60	1,065.9	-0.5	-13.4	0.9	0.03	0.00	1.71	
1,187.0	0.80	282.20	1,186.9	-0.1	-15.3	1.4	0.18	-0.17	3.80	
1,308.0	3.50	231.40	1,307.8	-2.3	-19.0	-0.4	2.53	2.23	-41.98	

Company:	BONANZA CREEK ENERGY OPERATING	Local Co-ordinate Reference:	Well State Seventy Holes T-P-6HNB
Project:	SEC.6-T4N-R62W	TVD Reference:	WELL @ 4543.0ft (Ensign Rig #136 - RKB - 13')
Site:	State Seventy Holes T-6 Pad Sec.6-T4N-R62W	MD Reference:	WELL @ 4543.0ft (Ensign Rig #136 - RKB - 13')
Well:	State Seventy Holes T-P-6HNB	North Reference:	True
Wellbore:	Wellbore #1	Survey Calculation Method:	Minimum Curvature
Design:	Wellbore #1	Database:	Landmark

Survey										
Measured Depth (ft)	Inclination (°)	Azimuth (°)	Vertical Depth (ft)	+N/-S (ft)	+E/-W (ft)	Vertical Section (ft)	Dogleg Rate (°/100ft)	Build Rate (°/100ft)	Turn Rate (°/100ft)	
1,428.0	6.50	216.80	1,427.3	-10.0	-25.9	-7.4	2.70	2.50	-12.17	
1,597.0	6.20	203.30	1,595.3	-26.0	-35.3	-22.4	0.90	-0.18	-7.99	
1,766.0	7.00	196.40	1,763.2	-44.3	-41.8	-39.9	0.67	0.47	-4.08	
1,936.0	9.10	192.60	1,931.5	-67.4	-47.6	-62.3	1.27	1.24	-2.24	
2,105.0	7.80	193.60	2,098.7	-91.6	-53.2	-85.8	0.77	-0.77	0.59	
2,273.0	7.70	197.00	2,265.1	-113.4	-59.2	-107.0	0.28	-0.06	2.02	
2,443.0	8.20	193.60	2,433.5	-136.1	-65.4	-128.9	0.40	0.29	-2.00	
2,614.0	7.90	190.40	2,602.8	-159.5	-70.4	-151.7	0.32	-0.18	-1.87	
2,785.0	6.40	199.60	2,772.5	-180.0	-75.7	-171.6	1.10	-0.88	5.38	
2,913.0	6.70	205.70	2,899.6	-193.5	-81.3	-184.4	0.59	0.23	4.77	
3,042.0	7.60	201.30	3,027.6	-208.2	-87.7	-198.5	0.82	0.70	-3.41	
3,170.0	8.10	195.50	3,154.4	-224.8	-93.2	-214.4	0.73	0.39	-4.53	
3,298.0	8.10	193.40	3,281.2	-242.2	-97.7	-231.3	0.23	0.00	-1.64	
3,427.0	7.90	191.70	3,408.9	-259.8	-101.6	-248.4	0.24	-0.16	-1.32	
3,555.0	7.90	190.10	3,535.7	-277.0	-104.9	-265.2	0.17	0.00	-1.25	
3,683.0	7.70	195.70	3,662.5	-294.0	-108.8	-281.7	0.61	-0.16	4.38	
3,811.0	8.80	204.30	3,789.2	-311.1	-115.1	-298.2	1.29	0.86	6.72	
3,940.0	8.20	203.80	3,916.8	-328.5	-122.9	-314.7	0.47	-0.47	-0.39	
4,068.0	7.20	201.70	4,043.6	-344.3	-129.5	-329.8	0.81	-0.78	-1.64	
4,197.0	8.00	207.70	4,171.5	-359.8	-136.7	-344.4	0.87	0.62	4.65	
4,329.0	8.00	192.20	4,302.2	-376.9	-142.9	-360.9	1.63	0.00	-11.74	
4,453.0	7.00	184.10	4,425.2	-392.9	-145.3	-376.5	1.17	-0.81	-6.53	
4,582.0	6.40	193.30	4,553.3	-407.7	-147.5	-391.1	0.95	-0.47	7.13	
4,710.0	3.60	207.00	4,680.8	-418.3	-151.0	-401.2	2.36	-2.19	10.70	
4,838.0	1.80	322.80	4,808.7	-420.2	-154.0	-402.9	3.65	-1.41	90.47	
4,966.0	0.30	65.80	4,936.7	-418.5	-154.9	-401.0	1.48	-1.17	80.47	
5,094.0	0.40	66.20	5,064.7	-418.2	-154.2	-400.8	0.08	0.08	0.31	
5,223.0	0.40	112.20	5,193.7	-418.2	-153.4	-400.9	0.24	0.00	35.66	
5,351.0	0.50	109.90	5,321.7	-418.5	-152.4	-401.3	0.08	0.08	-1.80	
5,479.0	0.70	115.40	5,449.7	-419.1	-151.2	-402.0	0.16	0.16	4.30	
5,608.0	1.00	121.40	5,578.6	-420.0	-149.5	-403.0	0.24	0.23	4.65	
5,651.0	0.90	106.40	5,621.6	-420.3	-148.9	-403.4	0.62	-0.23	-34.88	
5,693.0	2.90	340.40	5,663.6	-419.4	-148.9	-402.5	8.35	4.76	-300.00	
5,736.0	6.90	334.80	5,706.5	-416.0	-150.4	-399.0	9.36	9.30	-13.02	
5,779.0	10.60	338.30	5,749.0	-410.0	-153.0	-392.8	8.69	8.60	8.14	
5,822.0	14.20	342.50	5,790.9	-401.3	-156.0	-383.8	8.63	8.37	9.77	
5,865.0	17.40	346.00	5,832.3	-390.0	-159.1	-372.3	7.76	7.44	8.14	
5,907.0	20.10	347.10	5,872.1	-376.9	-162.3	-358.9	6.48	6.43	2.62	
5,950.0	23.30	347.80	5,912.0	-361.4	-165.7	-343.1	7.47	7.44	1.63	
5,993.0	26.30	351.80	5,951.1	-343.6	-168.9	-325.1	7.99	6.98	9.30	
6,036.0	29.70	353.90	5,989.0	-323.6	-171.4	-305.0	8.23	7.91	4.88	
6,079.0	34.20	355.00	6,025.5	-300.9	-173.6	-282.2	10.55	10.47	2.56	
6,121.0	38.60	356.20	6,059.3	-276.1	-175.5	-257.3	10.61	10.48	2.86	
6,164.0	43.60	356.20	6,091.7	-247.9	-177.3	-229.1	11.63	11.63	0.00	
6,207.0	48.60	356.00	6,121.5	-217.0	-179.4	-198.1	11.63	11.63	-0.47	
6,250.0	54.20	355.00	6,148.3	-183.5	-182.1	-164.5	13.15	13.02	-2.33	
6,293.0	60.10	355.30	6,171.6	-147.5	-185.1	-128.4	13.73	13.72	0.70	
6,335.0	65.30	355.70	6,190.9	-110.3	-188.1	-91.1	12.41	12.38	0.95	
6,378.0	70.20	355.30	6,207.2	-70.7	-191.2	-51.3	11.43	11.40	-0.93	
6,421.0	73.90	355.70	6,220.4	-29.9	-194.4	-10.4	8.65	8.60	0.93	
6,464.0	77.10	356.60	6,231.2	11.6	-197.2	31.2	7.71	7.44	2.09	
6,506.0	81.30	356.70	6,239.0	52.8	-199.6	72.4	10.00	10.00	0.24	
6,549.0	87.40	355.50	6,243.3	95.5	-202.5	115.1	14.46	14.19	-2.79	
6,551.1	87.63	355.50	6,243.4	97.5	-202.7	117.2	11.33	11.33	0.00	

Company:	BONANZA CREEK ENERGY OPERATING	Local Co-ordinate Reference:	Well State Seventy Holes T-P-6HNB
Project:	SEC.6-T4N-R62W	TVD Reference:	WELL @ 4543.0ft (Ensign Rig #136 - RKB - 13')
Site:	State Seventy Holes T-6 Pad Sec.6-T4N-R62W	MD Reference:	WELL @ 4543.0ft (Ensign Rig #136 - RKB - 13')
Well:	State Seventy Holes T-P-6HNB	North Reference:	True
Wellbore:	Wellbore #1	Survey Calculation Method:	Minimum Curvature
Design:	Wellbore #1	Database:	Landmark

Survey

Measured Depth (ft)	Inclination (°)	Azimuth (°)	Vertical Depth (ft)	+N/-S (ft)	+E/-W (ft)	Vertical Section (ft)	Dogleg Rate (°/100ft)	Build Rate (°/100ft)	Turn Rate (°/100ft)
T1 531'FSL & 1320'FEL									
6,594.0	92.50	355.50	6,243.3	140.3	-206.0	160.1	11.33	11.33	0.00
6,685.0	92.90	356.00	6,239.0	231.0	-212.8	251.0	0.70	0.44	0.55
6,727.0	92.40	355.90	6,237.1	272.8	-215.7	292.9	1.21	-1.19	-0.24
6,770.0	91.50	355.50	6,235.6	315.7	-219.0	335.9	2.29	-2.09	-0.93
6,812.0	90.00	355.30	6,235.1	357.5	-222.3	377.9	3.60	-3.57	-0.48
6,854.0	89.10	355.50	6,235.4	399.4	-225.7	419.8	2.20	-2.14	0.48
6,897.0	88.80	356.40	6,236.2	442.3	-228.7	462.8	2.21	-0.70	2.09
6,939.0	89.60	356.20	6,236.8	484.2	-231.4	504.8	1.96	1.90	-0.48
6,982.0	89.10	357.10	6,237.3	527.1	-233.9	547.8	2.39	-1.16	2.09
7,024.0	88.70	357.40	6,238.1	569.1	-236.0	589.7	1.19	-0.95	0.71
7,067.0	88.70	358.50	6,239.0	612.0	-237.5	632.6	2.56	0.00	2.56
7,109.0	89.50	358.00	6,239.7	654.0	-238.8	674.5	2.25	1.90	-1.19
7,151.0	88.80	358.00	6,240.3	696.0	-240.2	716.4	1.67	-1.67	0.00
7,194.0	88.60	357.60	6,241.3	738.9	-241.9	759.3	1.04	-0.47	-0.93
7,237.0	88.10	357.30	6,242.5	781.9	-243.8	802.2	1.36	-1.16	-0.70
7,279.0	88.50	356.90	6,243.8	823.8	-245.9	844.1	1.35	0.95	-0.95
7,322.0	89.00	356.20	6,244.7	866.7	-248.5	887.1	2.00	1.16	-1.63
7,365.0	89.40	355.90	6,245.3	909.6	-251.5	930.1	1.16	0.93	-0.70
7,408.0	89.90	355.30	6,245.6	952.5	-254.8	973.1	1.82	1.16	-1.40
7,451.0	90.00	354.60	6,245.6	995.3	-258.6	1,016.1	1.64	0.23	-1.63
7,493.0	90.40	354.10	6,245.5	1,037.1	-262.7	1,058.1	1.52	0.95	-1.19
7,536.0	90.00	355.20	6,245.3	1,079.9	-266.7	1,101.1	2.72	-0.93	2.56
7,579.0	90.00	355.70	6,245.3	1,122.8	-270.1	1,144.1	1.16	0.00	1.16
7,622.0	90.60	355.30	6,245.1	1,165.6	-273.5	1,187.0	1.68	1.40	-0.93
7,664.0	90.70	356.70	6,244.6	1,207.5	-276.4	1,229.0	3.34	0.24	3.33
7,707.0	90.00	357.40	6,244.4	1,250.5	-278.6	1,272.0	2.30	-1.63	1.63
7,750.0	90.60	356.70	6,244.1	1,293.4	-280.9	1,314.9	2.14	1.40	-1.63
7,793.0	91.00	357.10	6,243.5	1,336.3	-283.2	1,357.9	1.32	0.93	0.93
7,836.0	90.50	357.60	6,243.0	1,379.3	-285.2	1,400.8	1.64	-1.16	1.16
7,878.0	90.90	357.60	6,242.5	1,421.3	-286.9	1,442.7	0.95	0.95	0.00
7,921.0	89.80	357.80	6,242.2	1,464.2	-288.6	1,485.7	2.60	-2.56	0.47
7,964.0	90.40	357.60	6,242.1	1,507.2	-290.4	1,528.6	1.47	1.40	-0.47
8,007.0	89.50	357.10	6,242.2	1,550.1	-292.4	1,571.5	2.39	-2.09	-1.16
8,049.0	89.80	356.90	6,242.4	1,592.1	-294.6	1,613.5	0.86	0.71	-0.48
8,092.0	89.30	357.60	6,242.8	1,635.0	-296.6	1,656.4	2.00	-1.16	1.63
8,135.0	90.70	358.00	6,242.8	1,678.0	-298.3	1,699.3	3.39	3.26	0.93
8,178.0	91.10	357.30	6,242.1	1,721.0	-300.0	1,742.3	1.87	0.93	-1.63
8,221.0	90.60	358.00	6,241.4	1,763.9	-301.8	1,785.2	2.00	-1.16	1.63
8,263.0	89.20	356.90	6,241.5	1,805.9	-303.7	1,827.1	4.24	-3.33	-2.62
8,306.0	89.80	357.60	6,241.9	1,848.8	-305.7	1,870.0	2.14	1.40	1.63
8,349.0	90.40	358.00	6,241.8	1,891.8	-307.4	1,913.0	1.68	1.40	0.93
8,391.0	90.40	358.30	6,241.5	1,933.8	-308.7	1,954.9	0.71	0.00	0.71
8,434.0	90.60	0.30	6,241.2	1,976.8	-309.3	1,997.7	4.67	0.47	4.65
8,477.0	89.90	359.00	6,241.0	2,019.8	-309.5	2,040.5	3.43	-1.63	-3.02
8,520.0	90.50	359.60	6,240.8	2,062.8	-310.1	2,083.4	1.97	1.40	1.40
8,562.0	89.70	358.00	6,240.7	2,104.7	-310.9	2,125.2	4.26	-1.90	-3.81
8,605.0	90.40	358.70	6,240.7	2,147.7	-312.2	2,168.1	2.30	1.63	1.63
8,648.0	89.80	358.00	6,240.6	2,190.7	-313.4	2,211.0	2.14	-1.40	-1.63
8,691.0	90.20	358.70	6,240.6	2,233.7	-314.6	2,253.9	1.87	0.93	1.63
8,734.0	89.90	358.50	6,240.6	2,276.7	-315.7	2,296.8	0.84	-0.70	-0.47
8,776.0	90.50	359.60	6,240.4	2,318.7	-316.4	2,338.6	2.98	1.43	2.62
8,819.0	89.80	358.10	6,240.3	2,361.7	-317.3	2,381.5	3.85	-1.63	-3.49
8,862.0	90.40	358.80	6,240.3	2,404.6	-318.4	2,424.4	2.14	1.40	1.63

Company:	BONANZA CREEK ENERGY OPERATING	Local Co-ordinate Reference:	Well State Seventy Holes T-P-6HNB
Project:	SEC.6-T4N-R62W	TVD Reference:	WELL @ 4543.0ft (Ensign Rig #136 - RKB - 13')
Site:	State Seventy Holes T-6 Pad Sec.6-T4N-R62W	MD Reference:	WELL @ 4543.0ft (Ensign Rig #136 - RKB - 13')
Well:	State Seventy Holes T-P-6HNB	North Reference:	True
Wellbore:	Wellbore #1	Survey Calculation Method:	Minimum Curvature
Design:	Wellbore #1	Database:	Landmark

Survey

Measured Depth (ft)	Inclination (°)	Azimuth (°)	Vertical Depth (ft)	+N/-S (ft)	+E/-W (ft)	Vertical Section (ft)	Dogleg Rate (°/100ft)	Build Rate (°/100ft)	Turn Rate (°/100ft)
8,905.0	90.00	358.30	6,240.1	2,447.6	-319.5	2,467.3	1.49	-0.93	-1.16
8,948.0	90.00	358.50	6,240.1	2,490.6	-320.7	2,510.1	0.47	0.00	0.47
8,990.0	90.00	358.50	6,240.1	2,532.6	-321.8	2,552.0	0.00	0.00	0.00
9,033.0	89.90	358.50	6,240.1	2,575.6	-322.9	2,594.9	0.23	-0.23	0.00
9,076.0	90.30	359.20	6,240.1	2,618.6	-323.8	2,637.8	1.87	0.93	1.63
9,119.0	89.40	357.60	6,240.2	2,661.6	-325.0	2,680.7	4.27	-2.09	-3.72
9,162.0	89.60	356.90	6,240.6	2,704.5	-327.1	2,723.6	1.69	0.47	-1.63
9,204.0	89.60	357.30	6,240.9	2,746.4	-329.2	2,765.6	0.95	0.00	0.95
9,247.0	88.90	356.60	6,241.4	2,789.4	-331.5	2,808.5	2.30	-1.63	-1.63
9,290.0	89.00	355.50	6,242.2	2,832.3	-334.4	2,851.5	2.57	0.23	-2.56
9,333.0	88.10	355.00	6,243.3	2,875.1	-338.0	2,894.5	2.39	-2.09	-1.16
9,376.0	87.40	353.80	6,245.0	2,917.9	-342.2	2,937.4	3.23	-1.63	-2.79
9,418.0	88.00	353.60	6,246.7	2,959.6	-346.8	2,979.4	1.51	1.43	-0.48
9,461.0	89.60	353.80	6,247.6	3,002.3	-351.5	3,022.4	3.75	3.72	0.47
9,504.0	90.80	353.90	6,247.4	3,045.1	-356.1	3,065.4	2.80	2.79	0.23
9,547.0	91.90	354.60	6,246.4	3,087.8	-360.4	3,108.4	3.03	2.56	1.63
9,590.0	92.30	355.50	6,244.8	3,130.6	-364.1	3,151.3	2.29	0.93	2.09
9,632.0	92.30	355.20	6,243.1	3,172.5	-367.5	3,193.3	0.71	0.00	-0.71
9,675.0	89.80	355.20	6,242.4	3,215.3	-371.1	3,236.3	5.81	-5.81	0.00
9,718.0	89.10	355.30	6,242.8	3,258.2	-374.7	3,279.3	1.64	-1.63	0.23
9,761.0	88.60	356.20	6,243.6	3,301.0	-377.9	3,322.2	2.39	-1.16	2.09
9,804.0	89.10	356.20	6,244.5	3,343.9	-380.7	3,365.2	1.16	1.16	0.00
9,846.0	90.20	356.00	6,244.7	3,385.8	-383.6	3,407.2	2.66	2.62	-0.48
9,889.0	90.00	356.40	6,244.7	3,428.7	-386.4	3,450.2	1.04	-0.47	0.93
9,932.0	89.80	355.70	6,244.7	3,471.6	-389.4	3,493.1	1.69	-0.47	-1.63
9,975.0	90.80	355.90	6,244.5	3,514.5	-392.5	3,536.1	2.37	2.33	0.47
10,017.0	90.00	355.30	6,244.2	3,556.4	-395.8	3,578.1	2.38	-1.90	-1.43
10,060.0	90.20	355.70	6,244.2	3,599.3	-399.1	3,621.1	1.04	0.47	0.93
10,103.0	90.40	355.20	6,243.9	3,642.1	-402.5	3,664.1	1.25	0.47	-1.16
10,146.0	90.00	354.30	6,243.8	3,684.9	-406.5	3,707.1	2.29	-0.93	-2.09
10,188.0	90.50	355.70	6,243.6	3,726.8	-410.1	3,749.1	3.54	1.19	3.33
10,231.0	90.10	357.10	6,243.4	3,769.7	-412.8	3,792.1	3.39	-0.93	3.26
10,274.0	90.70	358.00	6,243.1	3,812.7	-414.7	3,835.0	2.52	1.40	2.09
10,317.0	90.10	356.90	6,242.8	3,855.6	-416.6	3,877.9	2.91	-1.40	-2.56
10,360.0	90.00	357.40	6,242.7	3,898.6	-418.7	3,920.9	1.19	-0.23	1.16
10,402.0	90.40	357.10	6,242.6	3,940.5	-420.7	3,962.8	1.19	0.95	-0.71
10,445.0	90.00	355.50	6,242.4	3,983.4	-423.5	4,005.8	3.84	-0.93	-3.72
10,488.0	90.30	356.00	6,242.3	4,026.3	-426.7	4,048.8	1.36	0.70	1.16
10,531.0	90.00	355.20	6,242.2	4,069.2	-430.0	4,091.8	1.99	-0.70	-1.86
10,574.0	90.30	355.30	6,242.1	4,112.0	-433.6	4,134.8	0.74	0.70	0.23
10,618.0	90.20	356.00	6,241.9	4,155.9	-436.9	4,178.7	1.61	-0.23	1.59
10,663.0	90.10	356.00	6,241.8	4,200.8	-440.0	4,223.7	0.22	-0.22	0.00
10,708.0	90.50	357.40	6,241.6	4,245.7	-442.6	4,268.7	3.24	0.89	3.11
10,753.0	90.10	356.70	6,241.3	4,290.6	-445.0	4,313.6	1.79	-0.89	-1.56
10,797.0	90.30	356.60	6,241.2	4,334.6	-447.5	4,357.6	0.51	0.45	-0.23
10,842.0	90.00	356.60	6,241.0	4,379.5	-450.2	4,402.6	0.67	-0.67	0.00
10,865.0	90.10	356.00	6,241.0	4,402.4	-451.7	4,425.5	2.64	0.43	-2.61
10,920.0	90.10	356.00	6,240.9	4,457.3	-455.5	4,480.5	0.00	0.00	0.00

BHL 470°FNL & 1320°FEL

Company:	BONANZA CREEK ENERGY OPERATING	Local Co-ordinate Reference:	Well State Seventy Holes T-P-6HNB
Project:	SEC.6-T4N-R62W	TVD Reference:	WELL @ 4543.0ft (Ensign Rig #136 - RKB - 13')
Site:	State Seventy Holes T-6 Pad Sec.6-T4N-R62W	MD Reference:	WELL @ 4543.0ft (Ensign Rig #136 - RKB - 13')
Well:	State Seventy Holes T-P-6HNB	North Reference:	True
Wellbore:	Wellbore #1	Survey Calculation Method:	Minimum Curvature
Design:	Wellbore #1	Database:	Landmark

Design Targets

Target Name - hit/miss target - Shape	Dip Angle (°)	Dip Dir. (°)	TVD (ft)	+N/-S (ft)	+E/-W (ft)	Northing (ft)	Easting (ft)	Latitude	Longitude
SHL 430'FSL & 1133'I - actual wellpath misses target center by 3.6ft at 1.0ft MD (1.0 TVD, 0.0 N, 0.0 E) - Point	0.00	0.00	1.0	-3.6	0.0	1,367,091.83	3,316,958.92	40.335490	-104.363000
T1 531'FSL & 1320'FE - actual wellpath misses target center by 27.4ft at 6550.0ft MD (6243.3 TVD, 96.5 N, -202.6 E) - Point	0.00	0.00	6,218.0	98.4	-192.4	1,367,191.36	3,316,765.27	40.335770	-104.363690
BHL 470'FNL & 1320' - actual wellpath misses target center by 26.5ft at 10920.0ft MD (6240.9 TVD, 4457.3 N, -455.5 E) - Point	0.00	0.00	6,218.0	4,466.4	-446.0	1,371,555.61	3,316,455.68	40.347760	-104.364600

Checked By: _____ Approved By: _____ Date: _____