

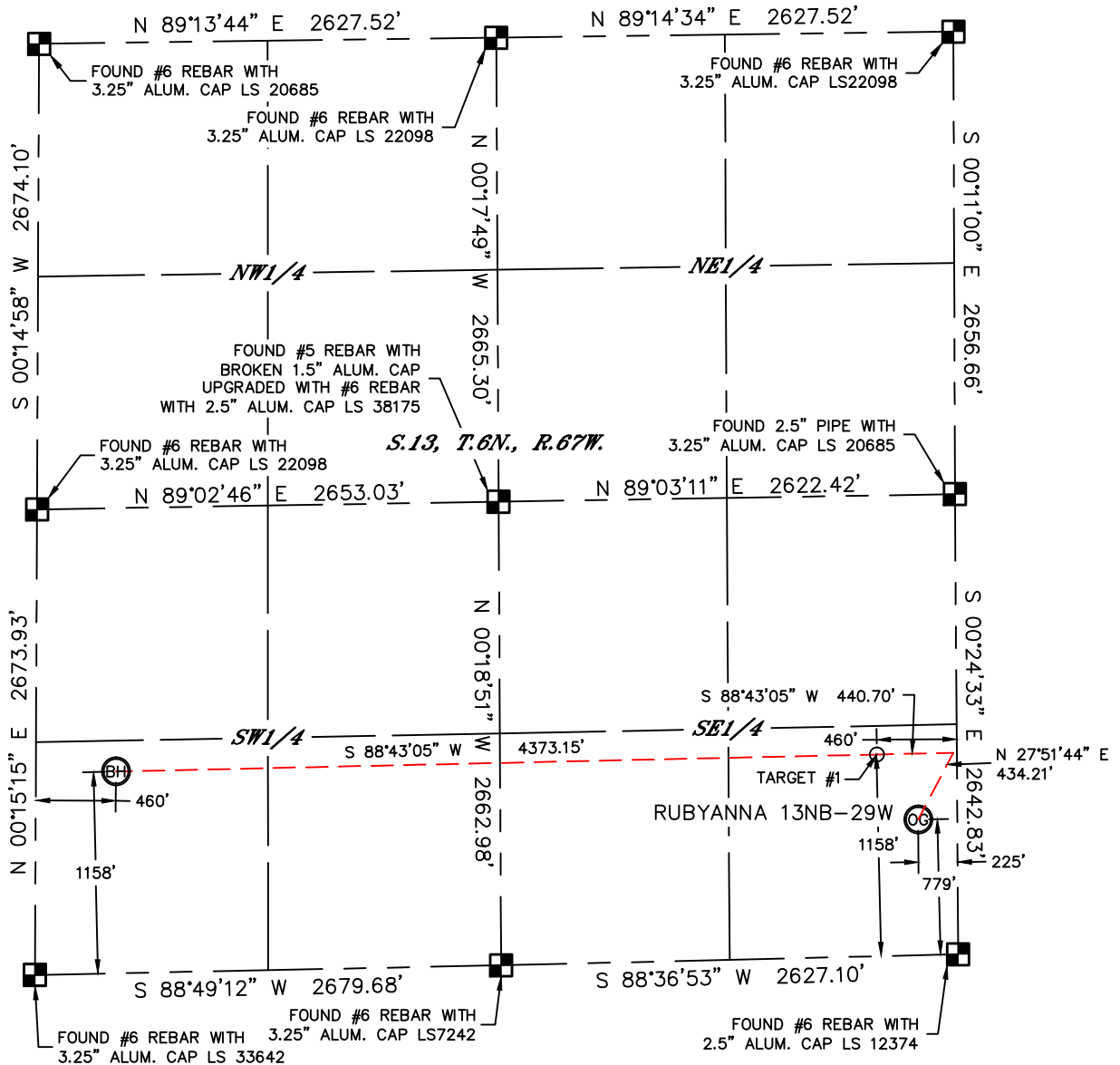


Lat40°, Inc. 1635 Foxtrail Drive, Suite 325 Loveland, CO 970-776-3321

WELL LOCATION CERTIFICATE

THIS MAP DOES NOT REPRESENT A BOUNDARY SURVEY

SECTION: 13
TOWNSHIP: 6N
RANGE: 67W



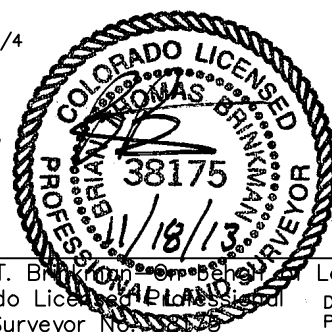
In accordance with a request from Clay Duke with EXTRACTION OIL & GAS Lat40°, Inc. has determined the surface location of the RUBYANNA 13NB-29W to be 779' from the SOUTH line and 225' from the EAST line and the bottom hole to be 1158' from the SOUTH line and 460' from the WEST line as measured at right angles from the section lines of Section 13, Township 6 North, Range 67 West of the Sixth Principal Meridian, County of Weld, State of Colorado.

I hereby state that this Well Location Certificate was prepared by me, or under my direct supervision, that the fieldwork was completed on 11/14/2013, for and on behalf of EXTRACTION OIL & GAS. That this is not a Land Survey Plat or an Improvement Survey Plat, and that it is not to be relied upon for establishment of fence, building, or other future improvement lines.

SURFACE LOCATION
LAT: 40.48195°N
LONG: 104.83321°W
PDOP: 3.1
ELEV: 4827'
1/4,1/4: SE1/4SE1/4

BOTTOM HOLE
LAT: 40.48281°N
LONG: 104.84977°W

TARGET #1
LAT: 40.48298°N
LONG: 104.83405°W



Brian T. Brinkman, Colorado Licensed Professional Surveyor No. 38175, Lat40°, Inc.
DATE: rev11/18/2013
PROJECT#: 2013147

NOTE:

- 1) Bearings shown are Grid Bearings of the Colorado State Plane Coordinate System, North Zone, North American Datum 1983/2007. The lineal dimensions as contained herein are based upon the "U.S. Survey Foot."
- 2) Ground elevations are based on an observed GPS elevation (NAVD 1988 DATUM).
- 3) IMPROVEMENTS: See LOCATION DRAWING for all visible improvements within 500' of disturbed area.
- 4) SURFACE USE: CROPLAND
- 5) INSTRUMENT OPERATOR: BRIAN ROTTINGHAUS
- NEAREST CULTURAL ITEMS:
BUILDING: 509' SE
BUILDING UNIT: 637' SE
HIGH OCCUPANCY BUILDING UNIT: 1001'+
DESIGNATED OUTSIDE ACTIVITY AREA: 1001'+
PUBLIC ROAD: 212' E (CR 25)
ABOVE GROUND UTILITY: 251' E
RAILROAD: 5280'+
PROPERTY LINE: 225' E

LEGEND

- = ALIQUOT MONUMENT AS DESCRIBED
○ = CALCULATED POSITION

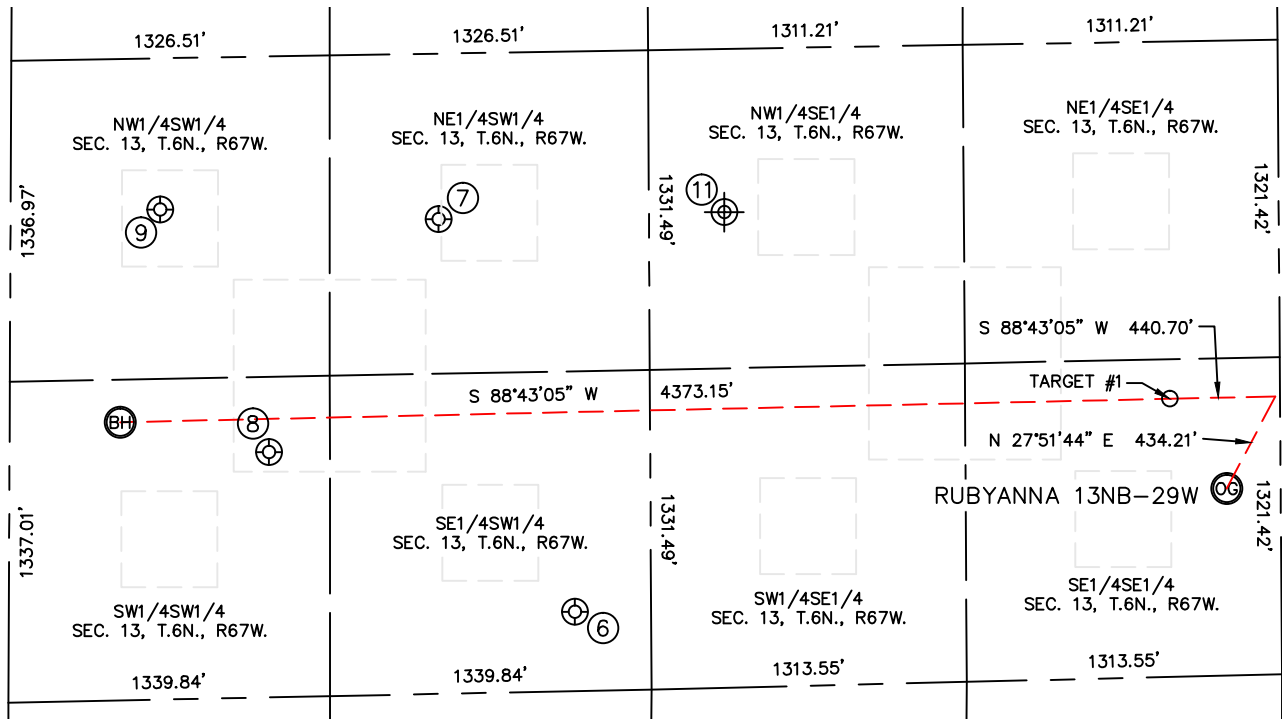


Lat40°, Inc. 1635 Foxtrail Drive, Suite 325 Loveland, CO 970-776-3321

SITE SKETCH

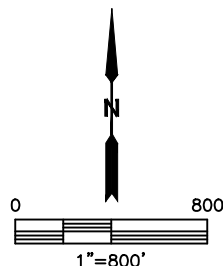
RUBYANNA 13NB-29W

SECTION: 13
TOWNSHIP: 6N
RANGE: 67W



| WELL # | WELL NAME | SHL FOOTAGE | | | | SHL LAT ° | SHL LONG ° | PDOP | ELEV (FT.) | 1/4/1/4 |
|--------|----------------------------|-------------|-----|------|-----|-----------|------------|------|------------|---------|
| 6 | STROMBERGER 1-13 | 330 | FSL | 2358 | FWL | 40.48060 | -104.84298 | 2.8 | 4804 | SESW |
| 7 | STROMBERGER 13 & 31 | 1976 | FSL | 1782 | FWL | 40.48510 | -104.84498 | 2.6 | 4838 | NESW |
| 8 | STROMBERGER 13-35 | 1021 | FSL | 1081 | FWL | 40.48245 | -104.84754 | 3.4 | 4810 | SWSW |
| 9 | STROMBERGER 13-32 | 2041 | FSL | 622 | FWL | 40.48523 | -104.84915 | 3.5 | 4837 | NWSW |
| 11 | FREE ENTERPRISE 1-13 (P&A) | 1980 | FSL | 2310 | FEL | 40.48514 | -104.84069 | NA | 4828 | NWSE |

NOTE: THE ABANDONED WELL DATA SHOWN IN RED ABOVE WAS OBTAINED FROM COGCC SCOUT CARDS.



DATE: rev11/18/2013
PROJECT#: 2013147