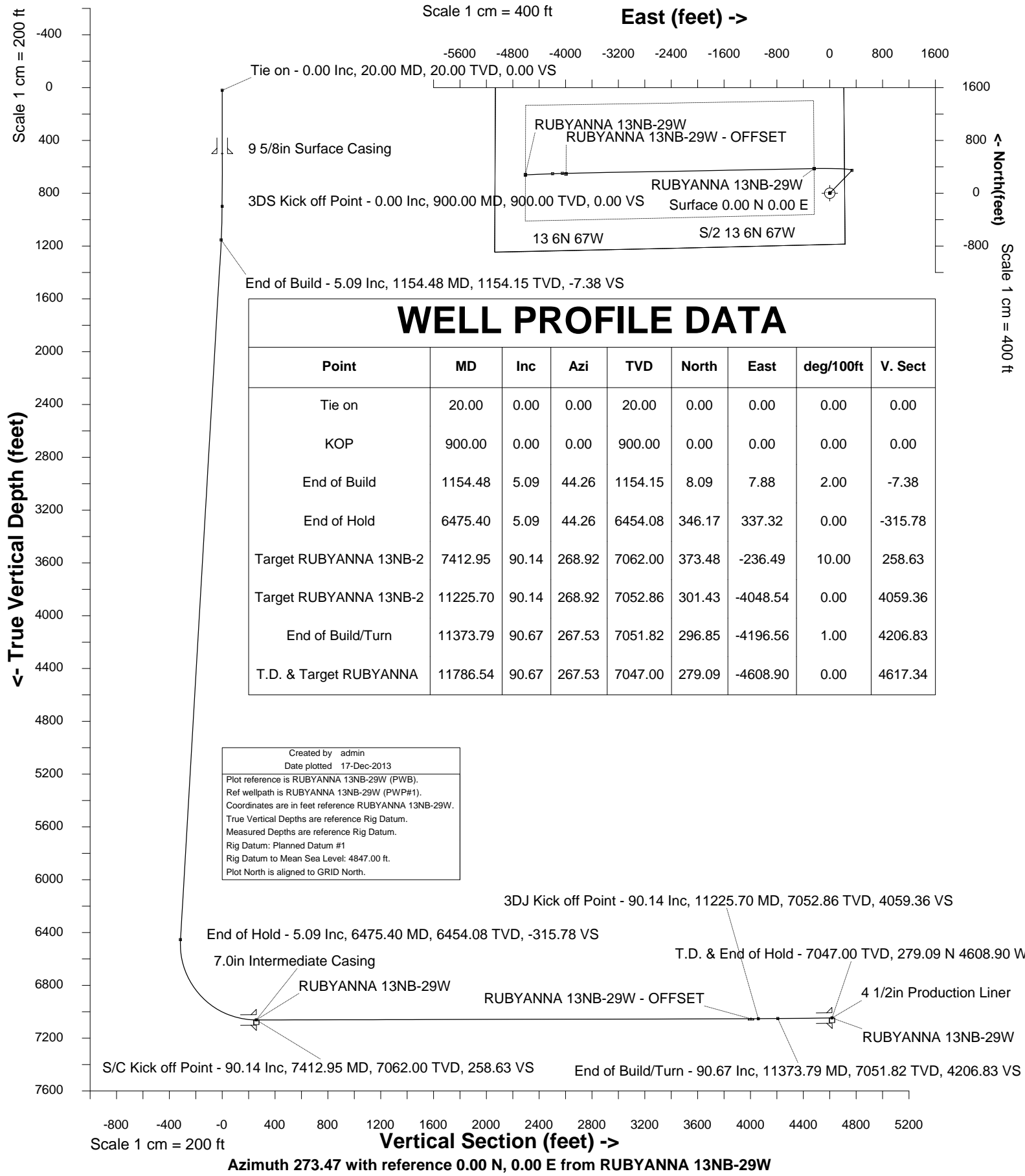


EXTRACTION OIL & GAS, LLC

Location	Weld County, CO, USA (Original)	Slot	RUBYANNA 13NB-29W
Field	Wattenberg	Well	RUBYANNA 13NB-29W
Installation	Rubyanna Pad	Wellbore	RUBYANNA 13NB-29W (PWB)





INTEGRATED PETROLEUM TECHNOLOGIES, INC
SYSDRILL
Well Design Combined Report
Wellbore: RUBYANNA 13NB-29W (PWB)

Wellhead Details							
Name	Northing	Easting	Latitude	Longitude	North	East	Elevation Above Inst.
RUBYANNA 13NB-29W	1419112.1655	3185481.6825	40.48195000	-104.83321000	105.65S	0.79E	-3.00

Declination			
Date	Source	Time	
21-Oct-2013	IGRF Model [1900.0-2015.0]	13:49	

Site Details				
Name	Northing	Easting	Coord System Name	North Alignment
Rubyanna Pad	1419217.8106	3185480.8881	CO83-NF on NORTH AMERICAN DATUM 1983 datum	Grid

Summary Wellpath									
MD[ft]	Inc[deg]	Azi[deg]	TVD[ft]	North[ft]	East[ft]	Dogleg [deg/100ft]	Vertical Section[ft]	Northing	Easting
20.00	0.00	0.000	20.00	0.00N	0.00E		0.00	1419112.17	3185481.68
900.00	0.00	0.000	900.00	0.00N	0.00E	==>	0.00	1419112.17	3185481.68
1154.48	5.09	44.260	1154.15	8.09N	7.88E	2.00	-7.38	1419120.26	3185489.57
6475.40	5.09	44.260	6454.08	346.17N	337.32E	==>	-315.78	1419458.32	3185818.99
7412.95	90.14	268.920	7062.00	373.48N	236.49W	10.00	258.63	1419485.63	3185245.21
11225.70	90.14	268.920	7052.86	301.43N	4048.54W	==>	4059.36	1419413.58	3181433.29
11373.79	90.67	267.530	7051.82	296.85N	4196.56W	1.00	4206.83	1419409.00	3181285.28
11786.54	90.67	267.530	7047.00	279.09N	4608.90W	==>	4617.34	1419391.25	3180872.96

Interpolated Wellpath									
MD[ft]	Inc[deg]	Azi[deg]	TVD[ft]	North[ft]	East[ft]	Dogleg [deg/100ft]	Vertical Section[ft]	Northing	Easting
0.00	0.00	0.000	0.00	0.00N	0.00E		0.00	1419112.17	3185481.68
20.00	0.00	0.000	20.00	0.00N	0.00E	==>	0.00	1419112.17	3185481.68
100.00	0.00	0.000	100.00	0.00N	0.00E	==>	0.00	1419112.17	3185481.68
200.00	0.00	0.000	200.00	0.00N	0.00E	==>	0.00	1419112.17	3185481.68
300.00	0.00	0.000	300.00	0.00N	0.00E	==>	0.00	1419112.17	3185481.68
400.00	0.00	0.000	400.00	0.00N	0.00E	==>	0.00	1419112.17	3185481.68
500.00	0.00	0.000	500.00	0.00N	0.00E	==>	0.00	1419112.17	3185481.68
600.00	0.00	0.000	600.00	0.00N	0.00E	==>	0.00	1419112.17	3185481.68
700.00	0.00	0.000	700.00	0.00N	0.00E	==>	0.00	1419112.17	3185481.68
800.00	0.00	0.000	800.00	0.00N	0.00E	==>	0.00	1419112.17	3185481.68
880.00	0.00	0.000	880.00	0.00N	0.00E	==>	0.00	1419112.17	3185481.68
900.00	0.00	0.000	900.00	0.00N	0.00E	==>	0.00	1419112.17	3185481.68
980.00	1.60	44.260	979.99	0.80N	0.78E	2.00	-0.73	1419112.97	3185482.46
1080.00	3.60	44.260	1079.88	4.05N	3.95E	2.00	-3.69	1419116.21	3185485.63
1154.48	5.09	44.260	1154.15	8.09N	7.88E	2.00	-7.38	1419120.26	3185489.57
1200.00	5.09	44.260	1199.49	10.98N	10.70E	==>	-10.02	1419123.15	3185492.38
1300.00	5.09	44.260	1299.09	17.34N	16.89E	==>	-15.81	1419129.50	3185498.57
1400.00	5.09	44.260	1398.70	23.69N	23.08E	==>	-21.61	1419135.85	3185504.77
1500.00	5.09	44.260	1498.30	30.04N	29.28E	==>	-27.41	1419142.21	3185510.96
1600.00	5.09	44.260	1597.91	36.40N	35.47E	==>	-33.20	1419148.56	3185517.15
1700.00	5.09	44.260	1697.51	42.75N	41.66E	==>	-39.00	1419154.91	3185523.34
1800.00	5.09	44.260	1797.12	49.10N	47.85E	==>	-44.79	1419161.27	3185529.53
1900.00	5.09	44.260	1896.73	55.46N	54.04E	==>	-50.59	1419167.62	3185535.72
2000.00	5.09	44.260	1996.33	61.81N	60.23E	==>	-56.39	1419173.98	3185541.91
2100.00	5.09	44.260	2095.94	68.17N	66.42E	==>	-62.18	1419180.33	3185548.10
2200.00	5.09	44.260	2195.54	74.52N	72.61E	==>	-67.98	1419186.68	3185554.29
2300.00	5.09	44.260	2295.15	80.87N	78.81E	==>	-73.77	1419193.04	3185560.49
2400.00	5.09	44.260	2394.75	87.23N	85.00E	==>	-79.57	1419199.39	3185566.68
2500.00	5.09	44.260	2494.36	93.58N	91.19E	==>	-85.37	1419205.74	3185572.87
2600.00	5.09	44.260	2593.97	99.93N	97.38E	==>	-91.16	1419212.10	3185579.06
2700.00	5.09	44.260	2693.57	106.29N	103.57E	==>	-96.96	1419218.45	3185585.25
2800.00	5.09	44.260	2793.18	112.64N	109.76E	==>	-102.75	1419224.80	3185591.44
2900.00	5.09	44.260	2892.78	119.00N	115.95E	==>	-108.55	1419231.16	3185597.63
3000.00	5.09	44.260	2992.39	125.35N	122.15E	==>	-114.35	1419237.51	3185603.82
3100.00	5.09	44.260	3091.99	131.70N	128.34E	==>	-120.14	1419243.86	3185610.01

All data is in Feet unless otherwise stated
Coordinates are from Slot MD's are from Rig and TVD's are from Rig (Planned Datum #1 4847.0ft above Mean Sea Level)
Vertical Section is from 0.00N 0.00E on azimuth 273.470 degrees
Bottom hole distance is 4617.34 Feet on azimuth 273.47 degrees from Wellhead
Calculation method uses Minimum Curvature method
Prepared by Integrated Petroleum Technologies, Inc.
Date Printed: 17-Dec-2013



INTEGRATED PETROLEUM TECHNOLOGIES, INC
SYSDRILL
Well Design Combined Report
Wellbore: RUBYANNA 13NB-29W (PWB)

Interpolated Wellpath									
MD[ft]	Inc[deg]	Azi[deg]	TVD[ft]	North[ft]	East[ft]	Dogleg [deg/100ft]	Vertical Section[ft]	Northing	Easting
3200.00	5.09	44.260	3191.60	138.06N	134.53E	==>	-125.94	1419250.22	3185616.21
3300.00	5.09	44.260	3291.21	144.41N	140.72E	==>	-131.73	1419256.57	3185622.40
3400.00	5.09	44.260	3390.81	150.77N	146.91E	==>	-137.53	1419262.93	3185628.59
3500.00	5.09	44.260	3490.42	157.12N	153.10E	==>	-143.33	1419269.28	3185634.78
3600.00	5.09	44.260	3590.02	163.47N	159.29E	==>	-149.12	1419275.63	3185640.97
3700.00	5.09	44.260	3689.63	169.83N	165.48E	==>	-154.92	1419281.99	3185647.16
3800.00	5.09	44.260	3789.23	176.18N	171.68E	==>	-160.71	1419288.34	3185653.35
3900.00	5.09	44.260	3888.84	182.53N	177.87E	==>	-166.51	1419294.69	3185659.54
4000.00	5.09	44.260	3988.45	188.89N	184.06E	==>	-172.30	1419301.05	3185665.73
4100.00	5.09	44.260	4088.05	195.24N	190.25E	==>	-178.10	1419307.40	3185671.93
4200.00	5.09	44.260	4187.66	201.60N	196.44E	==>	-183.90	1419313.75	3185678.12
4300.00	5.09	44.260	4287.26	207.95N	202.63E	==>	-189.69	1419320.11	3185684.31
4400.00	5.09	44.260	4386.87	214.30N	208.82E	==>	-195.49	1419326.46	3185690.50
4500.00	5.09	44.260	4486.47	220.66N	215.02E	==>	-201.28	1419332.81	3185696.69
4600.00	5.09	44.260	4586.08	227.01N	221.21E	==>	-207.08	1419339.17	3185702.88
4700.00	5.09	44.260	4685.69	233.36N	227.40E	==>	-212.88	1419345.52	3185709.07
4800.00	5.09	44.260	4785.29	239.72N	233.59E	==>	-218.67	1419351.87	3185715.26
4900.00	5.09	44.260	4884.90	246.07N	239.78E	==>	-224.47	1419358.23	3185721.45
5000.00	5.09	44.260	4984.50	252.43N	245.97E	==>	-230.26	1419364.58	3185727.65
5100.00	5.09	44.260	5084.11	258.78N	252.16E	==>	-236.06	1419370.94	3185733.84
5200.00	5.09	44.260	5183.71	265.13N	258.35E	==>	-241.86	1419377.29	3185740.03
5300.00	5.09	44.260	5283.32	271.49N	264.55E	==>	-247.65	1419383.64	3185746.22
5400.00	5.09	44.260	5382.93	277.84N	270.74E	==>	-253.45	1419390.00	3185752.41
5500.00	5.09	44.260	5482.53	284.19N	276.93E	==>	-259.24	1419396.35	3185758.60
5600.00	5.09	44.260	5582.14	290.55N	283.12E	==>	-265.04	1419402.70	3185764.79
5700.00	5.09	44.260	5681.74	296.90N	289.31E	==>	-270.84	1419409.06	3185770.98
5800.00	5.09	44.260	5781.35	303.26N	295.50E	==>	-276.63	1419415.41	3185777.17
5900.00	5.09	44.260	5880.95	309.61N	301.69E	==>	-282.43	1419421.76	3185783.37
6000.00	5.09	44.260	5980.56	315.96N	307.89E	==>	-288.22	1419428.12	3185789.56
6100.00	5.09	44.260	6080.17	322.32N	314.08E	==>	-294.02	1419434.47	3185795.75
6200.00	5.09	44.260	6179.77	328.67N	320.27E	==>	-299.82	1419440.82	3185801.94
6300.00	5.09	44.260	6279.38	335.02N	326.46E	==>	-305.61	1419447.18	3185808.13
6400.00	5.09	44.260	6378.98	341.38N	332.65E	==>	-311.41	1419453.53	3185814.32
6475.40	5.09	44.260	6454.08	346.17N	337.32E	==>	-315.78	1419458.32	3185818.99
6500.00	3.76	16.840	6478.61	347.72N	338.31E	10.00	-316.68	1419459.88	3185819.98
6600.00	9.54	290.810	6578.07	353.82N	331.51E	10.00	-309.51	1419465.98	3185813.18
6700.00	19.17	279.300	6674.85	359.44N	307.50E	10.00	-285.21	1419471.59	3185789.17
6800.00	29.05	275.400	6766.02	364.39N	267.03E	10.00	-244.52	1419476.54	3185748.70
6900.00	38.98	273.360	6848.81	368.53N	211.32E	10.00	-188.66	1419480.68	3185693.00
7000.00	48.94	272.050	6920.70	371.73N	142.07E	10.00	-119.34	1419483.88	3185623.75
7100.00	58.91	271.090	6979.51	373.90N	61.38E	10.00	-38.66	1419486.05	3185543.06
7200.00	68.89	270.310	7023.46	374.97N	28.30W	10.00	50.92	1419487.12	3185453.38
7300.00	78.86	269.630	7051.19	374.91N	124.25W	10.00	146.68	1419487.06	3185357.44
7400.00	88.84	269.000	7061.89	373.72N	223.54W	10.00	245.72	1419485.87	3185258.15
7412.95	90.14	268.920	7062.00	373.48N	236.49W	10.00	258.63	1419485.63	3185245.21
7500.00	90.14	268.920	7061.79	371.84N	323.52W	==>	345.41	1419483.99	3185158.17
7600.00	90.14	268.920	7061.55	369.95N	423.50W	==>	445.09	1419482.10	3185058.20
7700.00	90.14	268.920	7061.31	368.06N	523.48W	==>	544.77	1419480.21	3184958.22
7800.00	90.14	268.920	7061.07	366.17N	623.47W	==>	644.46	1419478.32	3184858.24
7900.00	90.14	268.920	7060.83	364.28N	723.45W	==>	744.14	1419476.43	3184758.26
8000.00	90.14	268.920	7060.59	362.39N	823.43W	==>	843.83	1419474.54	3184658.28
8100.00	90.14	268.920	7060.35	360.50N	923.41W	==>	943.51	1419472.65	3184558.30
8200.00	90.14	268.920	7060.11	358.61N	1023.39W	==>	1043.20	1419470.76	3184458.33
8300.00	90.14	268.920	7059.87	356.72N	1123.38W	==>	1142.88	1419468.87	3184358.35
8400.00	90.14	268.920	7059.63	354.83N	1223.36W	==>	1242.57	1419466.98	3184258.37
8500.00	90.14	268.920	7059.39	352.94N	1323.34W	==>	1342.25	1419465.09	3184158.39
8600.00	90.14	268.920	7059.15	351.05N	1423.32W	==>	1441.94	1419463.20	3184058.41
8700.00	90.14	268.920	7058.91	349.16N	1523.30W	==>	1541.62	1419461.31	3183958.44
8800.00	90.14	268.920	7058.67	347.27N	1623.29W	==>	1641.31	1419459.42	3183858.46
8900.00	90.14	268.920	7058.44	345.38N	1723.27W	==>	1740.99	1419457.53	3183758.48
9000.00	90.14	268.920	7058.20	343.49N	1823.25W	==>	1840.68	1419455.64	3183658.50

All data is in Feet unless otherwise stated
Coordinates are from Slot MD's are from Rig and TVD's are from Rig (Planned Datum #1 4847.0ft above Mean Sea Level)
Vertical Section is from 0.00N 0.00E on azimuth 273.470 degrees
Bottom hole distance is 4617.34 Feet on azimuth 273.47 degrees from Wellhead
Calculation method uses Minimum Curvature method
Prepared by Integrated Petroleum Technologies, Inc.
Date Printed: 17-Dec-2013



INTEGRATED PETROLEUM TECHNOLOGIES, INC
SYSDRILL
Well Design Combined Report
Wellbore: RUBYANNA 13NB-29W (PWB)

Interpolated Wellpath									
MD[ft]	Inc[deg]	Azi[deg]	TVD[ft]	North[ft]	East[ft]	Dogleg [deg/100ft]	Vertical Section[ft]	Northing	Easting
9100.00	90.14	268.920	7057.96	341.60N	1923.23W	==>	1940.36	1419453.75	3183558.52
9200.00	90.14	268.920	7057.72	339.71N	2023.21W	==>	2040.05	1419451.86	3183458.54
9300.00	90.14	268.920	7057.48	337.82N	2123.19W	==>	2139.73	1419449.97	3183358.57
9400.00	90.14	268.920	7057.24	335.93N	2223.18W	==>	2239.42	1419448.08	3183258.59
9500.00	90.14	268.920	7057.00	334.04N	2323.16W	==>	2339.10	1419446.19	3183158.61
9600.00	90.14	268.920	7056.76	332.15N	2423.14W	==>	2438.79	1419444.30	3183058.63
9700.00	90.14	268.920	7056.52	330.26N	2523.12W	==>	2538.47	1419442.42	3182958.65
9800.00	90.14	268.920	7056.28	328.37N	2623.10W	==>	2638.16	1419440.53	3182858.68
9900.00	90.14	268.920	7056.04	326.48N	2723.09W	==>	2737.84	1419438.64	3182758.70
10000.00	90.14	268.920	7055.80	324.59N	2823.07W	==>	2837.53	1419436.75	3182658.72
10100.00	90.14	268.920	7055.56	322.70N	2923.05W	==>	2937.21	1419434.86	3182558.74
10200.00	90.14	268.920	7055.32	320.81N	3023.03W	==>	3036.90	1419432.97	3182458.76
10300.00	90.14	268.920	7055.08	318.92N	3123.01W	==>	3136.58	1419431.08	3182358.79
10400.00	90.14	268.920	7054.84	317.03N	3222.99W	==>	3236.26	1419429.19	3182258.81
10500.00	90.14	268.920	7054.60	315.14N	3322.98W	==>	3335.95	1419427.30	3182158.83
10600.00	90.14	268.920	7054.36	313.25N	3422.96W	==>	3435.63	1419425.41	3182058.85
10700.00	90.14	268.920	7054.12	311.36N	3522.94W	==>	3535.32	1419423.52	3181958.87
10800.00	90.14	268.920	7053.88	309.47N	3622.92W	==>	3635.00	1419421.63	3181858.89
10900.00	90.14	268.920	7053.64	307.59N	3722.90W	==>	3734.69	1419419.74	3181758.92
11000.00	90.14	268.920	7053.40	305.70N	3822.89W	==>	3834.37	1419417.85	3181658.94
11100.00	90.14	268.920	7053.16	303.81N	3922.87W	==>	3934.06	1419415.96	3181558.96
11200.00	90.14	268.920	7052.92	301.92N	4022.85W	==>	4033.74	1419414.07	3181458.98
11225.70	90.14	268.920	7052.86	301.43N	4048.54W	==>	4059.36	1419413.58	3181433.29
11300.00	90.40	268.220	7052.51	299.58N	4122.82W	1.00	4133.39	1419411.73	3181359.01
11373.79	90.67	267.530	7051.82	296.85N	4196.56W	1.00	4206.83	1419409.00	3181285.28
11400.00	90.67	267.530	7051.51	295.72N	4222.74W	==>	4232.89	1419407.87	3181259.10
11500.00	90.67	267.530	7050.34	291.42N	4322.64W	==>	4332.35	1419403.57	3181159.20
11600.00	90.67	267.530	7049.18	287.12N	4422.54W	==>	4431.81	1419399.27	3181059.30
11700.00	90.67	267.530	7048.01	282.82N	4522.44W	==>	4531.27	1419394.97	3180959.41
11786.54	90.67	267.530	7047.00	279.09N	4608.90W	==>	4617.34	1419391.25	3180872.96

All data is in Feet unless otherwise stated
Coordinates are from Slot MD's are from Rig and TVD's are from Rig (Planned Datum #1 4847.0ft above Mean Sea Level)
Vertical Section is from 0.00N 0.00E on azimuth 273.470 degrees
Bottom hole distance is 4617.34 Feet on azimuth 273.47 degrees from Wellhead
Calculation method uses Minimum Curvature method
Prepared by Integrated Petroleum Technologies, Inc.
Date Printed: 17-Dec-2013



INTEGRATED PETROLEUM TECHNOLOGIES, INC
SYSDRILL
Well Design Combined Report
Wellbore: RUBYANNA 13NB-29W (PWB)

Hole Sections								
Diameter [in]	Start MD[ft]	Start TVD[ft]	Start North[ft]	Start East[ft]	End MD[ft]	End TVD[ft]	End North[ft]	End East[ft]
12 1/4	20.00	20.00	0.00N	0.00E	500.00	500.00	0.00N	0.00E
8 3/4	500.00	500.00	0.00N	0.00E	7412.95	7062.00	373.48N	236.49W
6 1/8	7412.95	7062.00	373.48N	236.49W	11786.54	7047.00	279.09N	4608.90W

Casings								
Name	Top MD[ft]	Top TVD[ft]	Top North[ft]	Top East[ft]	Shoe MD[ft]	Shoe TVD[ft]	Shoe North[ft]	Shoe East[ft]
9 5/8in Surface Casing	20.00	20.00	0.00N	0.00E	500.00	500.00	0.00N	0.00E
7.0in Intermediate Casing	20.00	20.00	0.00N	0.00E	7412.95	7062.00	373.48N	236.49W
4 1/2in Production Liner	6500.00	6478.61	347.72N	338.31E	11786.54	7047.00	279.09N	4608.90W

Targets								
Name	North[ft]	East[ft]	TVD[ft]	Latitude	Longitude	Northing	Easting	Last Revised
RUBYANNA 13NB-29W - OFFSET	292.93N	3993.54W	7052.86	40.48283557	-104.84755762	1419405.09	3181488.29	23-Oct-2013
RUBYANNA 13NB-29W	373.48N	236.49W	7062.00	40.48298000	-104.83405000	1419485.63	3185245.21	23-Oct-2013
RUBYANNA 13NB-29W	279.09N	4608.90W	7047.00	40.48281000	-104.84977000	1419391.25	3180872.96	23-Oct-2013

Survey Tool Program					
Reference	Survey Name	MD[ft]	TVD[ft]	Survey Tool	Error Model
93452	Planned	11786.54	7047.00	WdW Rate Gyro	Standard

Notes

All data is in Feet unless otherwise stated
Coordinates are from Slot MD's are from Rig and TVD's are from Rig (Planned Datum #1 4847.0ft above Mean Sea Level)
Vertical Section is from 0.00N 0.00E on azimuth 273.470 degrees
Bottom hole distance is 4617.34 Feet on azimuth 273.47 degrees from Wellhead
Calculation method uses Minimum Curvature method
Prepared by Integrated Petroleum Technologies, Inc.
Date Printed: 17-Dec-2013



SYSDRILL
Closest Approach + Clearance Factor Summary Report
Wellbore: RUBYANNA 13NB-29W (PWB)

Ellipse separations are reported ONLY if BOTH wells have uncertainty data
Only Depth and Magnetic Reference Field error terms are correlated across tie points
Scan limit is calculated on CENTRE to CENTRE distance

Summary data uses Closest Approach clearance calculation for all minima
Hole size/Casings ARE included
Hole size/Casings are NOT subtracted from Centre-Centre distance
Confidence limit of 95.00% / 2.80 SD.

Wellbore		
Name	Created	Last Revised
RUBYANNA 13NB-29W (PWB)	23-Oct-2013	17-Dec-2013

Well		
Name	Government ID	Last Revised
RUBYANNA 13NB-29W		23-Oct-2013

Slot						
Name	Grid Northing	Grid Easting	Latitude	Longitude	North	East
RUBYANNA 13NB-29W	1419112.1655	3185481.6825	40.48195000	-104.83321000	105.65S	0.79E

Installation					
Name	Easting	Northing	Coord System Name	North Alignment	
Rubyanna Pad	3185480.8881	1419217.8106	CO83-NF on NORTH AMERICAN DATUM 1983 datum	Grid	

Field					
Name	Easting	Northing	Coord System Name	North Alignment	
Wattenberg	3169265.3596	1428201.7578	CO83-NF on NORTH AMERICAN DATUM 1983 datum	Grid	

Clearance Summary										
Offset WellName	Offset Wellbore	Offset Slot	Offset Structure	Separation [ft]	MD[ft]	Diverging From[ft]	Ellipse Separation [ft]	Ellipse MD[ft]	Clearance Factor	Clearance MD[ft]
RUBYANN A 13C-30W	RUBYANNA 13C-30W (PWB)	RUBYANN A 13C-30W	Rubyanna Pad	25.50	900.00	11786.54	23.42	905.83	4.61	11786.54
RUBYANN A 13C-28W	RUBYANNA 13C-28W (PWB)	RUBYANN A 13C-28W	Rubyanna Pad	25.50	849.00	11256.88	23.51	849.00	4.69	11786.54
RUBYANN A 13NB-31W	RUBYANNA 13NB-31W (PWB)	RUBYANN A 13NB-31W	Rubyanna Pad	51.00	900.00	11786.54	48.93	900.00	7.89	11786.54
RUBYANN A 13NB-27W	RUBYANNA 13NB-27W (PWB)	RUBYANN A 13NB-27W	Rubyanna Pad	54.65	799.00	11256.88	52.74	799.00	7.83	11786.54
RUBYANN A 13C-32W	RUBYANNA 13C-32W (PWB)	RUBYANN A 13C-32W	Rubyanna Pad	76.51	852.00	11786.54	74.51	852.00	14.06	11786.54
W RUBYANN A 13NC-26W	RUBYANNA 13NC-26W (PWB)	RUBYANN A 13NC-26W	Rubyanna Pad	80.15	748.00	11256.88	78.32	748.00	11.88	11786.54
RUBYANN A 13C-25W	RUBYANNA 13C-25W (PWB)	RUBYANN A 13C-25W	Rubyanna Pad	105.65	692.57	692.57	103.91	692.57	18.25	11786.54
W STROMBERGER #13-35	W STROMBERGER #13-35 (AWB)	STROMBERGER #13-35	Rubyanna Offsets	150.02	11170.37	11170.37	90.81	11170.37	2.53	11170.37
W DUNBAR #18-33	W DUNBAR #18-33 (AWB)	DUNBAR #18-33	Rubyanna Offsets	647.36	6499.66	6499.66	618.54	6499.66	22.43	6532.47

All data is in Feet unless otherwise stated
Coordinates are from Slot MD's are from Rig and TVD's are from Rig (Planned Datum #1 4847.0ft above Mean Sea Level)
Vertical Section is from 0.00N 0.00E on azimuth 273.470 degrees
Prepared by Integrated Petroleum Technologies, Inc.
Date Printed: 17-Dec-2013



SYSDRILL
Closest Approach + Clearance Factor Summary Report
Wellbore: RUBYANNA 13NB-29W (PWB)

Clearance Summary										
Offset WellName	Offset Wellbore	Offset Slot	Offset Structure	Separation [ft]	MD[ft]	Diverging From[ft]	Ellipse Separation [ft]	Ellipse MD[ft]	Clearance Factor	Clearance MD[ft]
W DUNBAR #1-18	W DUNBAR #1-18 (AWB)	DUNBAR #1-18	Rubyanna Offsets	702.83	2021.31	2021.31	690.54	2320.00	38.19	4563.96
W STROMBERGER #13-31	W STROMBERGER #13-31 (AWB)	STROMBERGER #13-31	Rubyanna Offsets	807.89	10448.26	10448.26	754.89	10453.07	15.08	10551.50
W STROMBERGER #1-13	W STROMBERGER #1-13 (AWB)	STROMBERGER #1-13	Rubyanna Offsets	834.19	9911.73	9911.73	783.41	9911.73	16.39	9960.94
W STROMBERGER #13-32	W STROMBERGER #13-32 (AWB)	STROMBERGER #13-32	Rubyanna Offsets	871.29	11584.96	11584.96	808.50	11601.36	13.74	11683.39
R A #1	R A #1 (AWB)	R A #1	Rubyanna Offsets	1011.13	6581.68	6581.68	983.16	6581.68	36.07	6647.30
W FREE ENTERPRISE #1-13	W FREE ENTERPRISE #1-13 (AWB)	FREE ENTERPRISE #1-13	Rubyanna Offsets	2382.65	905.83	9255.61	2374.93	955.04	115.24	10485.88
Frye 1-10	Frye 1-10 (AWB)	Frye 1-10	Winder Offsets	13162.85	11786.54	11786.54	13127.90	11786.54	376.64	11786.54
Winder 9-42	Winder 9-42 (AWB)	Winder 9-42	Winder Offsets	13799.62	11786.54	11786.54	13754.24	11786.54	304.09	11786.54
Winder 9-41	Winder 9-41 (PWB)	Slot #1	Winder	14448.83	11786.54	11786.54	14411.22	11786.54	384.11	11786.54
Winder 1-9	Winder 1-9 (AWB)	Winder 1-9	Winder Offsets	14931.97	11786.54	11786.54	14895.96	11786.54	414.63	11786.54
Winder 9-32	Winder 9-32 (AWB)	Winder 9-32	Winder Offsets	14975.86	11786.54	11786.54	14932.09	11786.54	342.11	11786.54
Winder 9-31	Winder 9-31 (AWB)	Winder 9-31	Winder Offsets	15545.63	11786.54	11786.54	15499.64	11786.54	337.99	11786.54
HINER 36C-17W	HINER 36C-17W (PWB)	Slot #8	HINER	29722.79	6516.06	6516.06	29704.44	6516.06	1390.58	11786.54
HINER 36NC-18W	HINER 36NC-18W (PWB)	Slot #7	HINER	29903.25	6499.66	6499.66	29882.16	6499.66	1260.22	11786.54
HINER 36NB-19W	HINER 36NB-19W (PWB)	Slot #6	HINER	30032.22	6499.66	6499.66	30008.86	6499.66	1162.61	11786.54
W FLATIRON S I #36-4	W FLATIRON S I #36-4 (AWB)	FLATIRON S I #36-4	HINER Offsets	30093.40	6499.66	6499.66	30064.87	6499.66	932.73	11786.54
HINER 36C-20W	HINER 36C-20W (PWB)	Slot #5	HINER	30171.99	6516.06	6516.06	30146.14	6516.06	1070.09	11786.54
HINER 36NB-21W	HINER 36NB-21W (PWB)	Slot #4	HINER	30296.35	6499.66	6499.66	30268.17	6499.66	995.20	11786.54
HINER 36C-22W	HINER 36C-22W (PWB)	Slot #3	HINER	30438.33	6516.06	6516.06	30407.49	6516.06	921.79	11786.54

All data is in Feet unless otherwise stated
Coordinates are from Slot MD's are from Rig and TVD's are from Rig (Planned Datum #1 4847.0ft above Mean Sea Level)
Vertical Section is from 0.00N 0.00E on azimuth 273.470 degrees
Prepared by Integrated Petroleum Technologies, Inc.
Date Printed: 17-Dec-2013



SYSDRILL
Closest Approach + Clearance Factor Summary Report
Wellbore: RUBYANNA 13NB-29W (PWB)

Clearance Summary										
Offset WellName	Offset Wellbore	Offset Slot	Offset Structure	Separation [ft]	MD[ft]	Diverging From[ft]	Ellipse Separation [ft]	Ellipse MD[ft]	Clearance Factor	Clearance MD[ft]
HINER 36NB-23W	HINER 36NB-23W (PWB)	Slot #2	HINER	30571.35	6499.66	6499.66	30538.07	6499.66	863.07	11786.54
HINER 36C-24W	HINER 36C-24W (PWB)	Slot #1	HINER	30809.10	6516.06	6516.06	30771.49	6516.06	776.13	11786.54
W FLATIRON S #1-36	W FLATIRONS #1-36 (AWB)	FLATIRON S #1-36	HINER Offsets	31245.48	6499.66	6499.66	31217.05	6499.66	972.50	11786.54
W FLATIRON #7-36	W FLATIRON #7-36 (AWB)	FLATIRON #7-36	HINER Offsets	33030.30	6499.66	6499.66	33001.79	6499.66	998.74	11786.54