



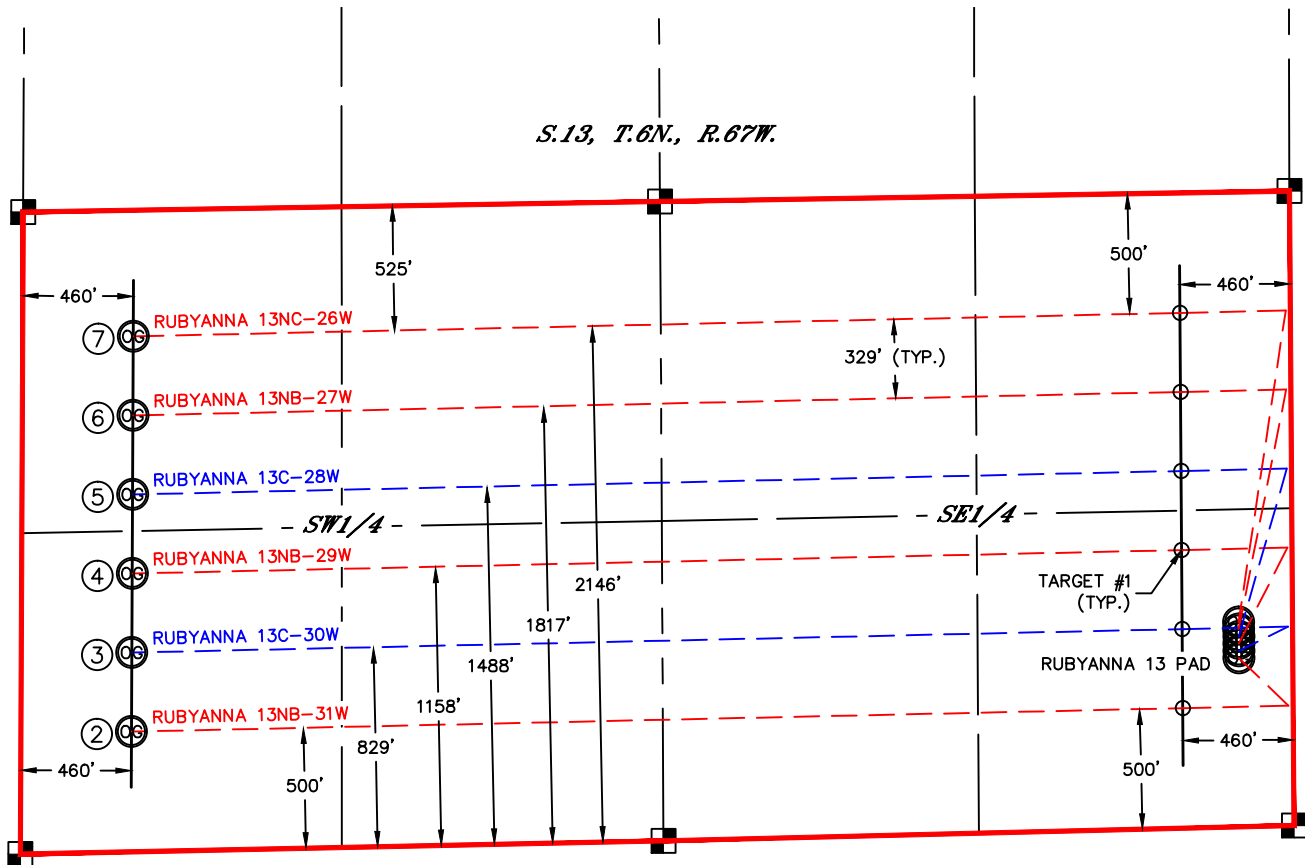
Lat40°, Inc. 1635 Foxtrail Drive, Suite 325 Loveland, CO 970-776-3321

SPACING UNIT EXHIBIT

RUBYANNA 13 PAD

SECTION: 13
TOWNSHIP: 6N
RANGE: 67W

THIS MAP DOES NOT REPRESENT A BOUNDARY SURVEY



②

RUBYANNA 13NB-31W

-BOTTOM HOLE-
500' FSL, 460' FWL
-SURFACE HOLE-
703' FSL, 225' FEL

③

RUBYANNA 13C-30W

-BOTTOM HOLE-
829' FSL, 460' FWL
-SURFACE HOLE-
733' FSL, 225' FEL

④

RUBYANNA 13NB-29W

-BOTTOM HOLE-
1158' FSL, 460' FWL
-SURFACE HOLE-
763' FSL, 225' FEL

⑤

RUBYANNA 13C-28W

-BOTTOM HOLE-
1488' FSL, 460' FWL
-SURFACE HOLE-
793' FSL, 225' FEL

⑥

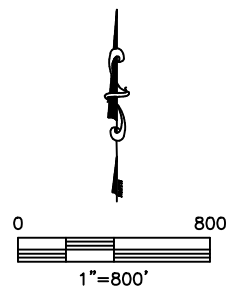
RUBYANNA 13NB-27W

-BOTTOM HOLE-
1817' FSL, 460' FWL
-SURFACE HOLE-
823' FSL, 225' FEL

⑦

RUBYANNA 13NC-26W

-BOTTOM HOLE-
2146' FSL, 460' FWL
-SURFACE HOLE-
853' FSL, 225' FEL



DATE: 10/16/2013
PROJECT#: 2013147



12/17/2013

VIA ELECTRONIC TRANSMITTAL

Colorado Oil and Gas Conservation Commission
Attn: Matt Lepore, Director
1120 Lincoln Street, Suite 801
Denver, CO 80203

RE: 30-Day Affidavit and Certification Letter

Rubyanna 13C-25W Well: 883' FSL, 225' FEL Sec. 13-T6N-R67W, Weld County, Colorado
Rubyanna 13NC-26W Well: 853' FSL, 225' FEL Sec. 13-T6N-R67W, Weld County, Colorado
Rubyanna 13NB-27W Well: 823' FSL, 225' FEL Sec. 13-T6N-R67W, Weld County, Colorado
Rubyanna 13C-28W Well: 793' FSL, 225' FEL Sec. 13-T6N-R67W, Weld County, Colorado
Rubyanna 13NB-29W Well: 763' FSL, 225' FEL Sec. 13-T6N-R67W, Weld County, Colorado
Rubyanna 13C-30W Well: 733' FSL, 225' FEL Sec. 13-T6N-R67W, Weld County, Colorado
Rubyanna 13NB-31W Well: 703' FSL, 225' FEL Sec. 13-T6N-R67W, Weld County, Colorado
Rubyanna 13C-32W Well: 673' FSL, 225' FEL Sec. 13-T6N-R67W, Weld County, Colorado

Dear Mr. Lepore,

Extraction Oil & Gas LLC (EXT) hereby certifies that thirty (30) day notice has been given to all owners in the proposed wellbore spacing unit in accordance with Rule 318A.e(6). The notices were sent on 11/08/13. EXT has received no objections to the subject well locations, proposed spacing units, or additional producing information from any owner as described in C.R.S. §34-60-103(7). The thirty (30) day objection period has expired. EXT respectfully requests that the Director approve the wells. Should you have any questions or concerns please contact the undersigned at 720-420-5700.

Sincerely,

Clayton L. Doke
Senior Engineer
Integrated Petroleum Technologies Inc
Consultants to Extraction Oil & Gas LLC