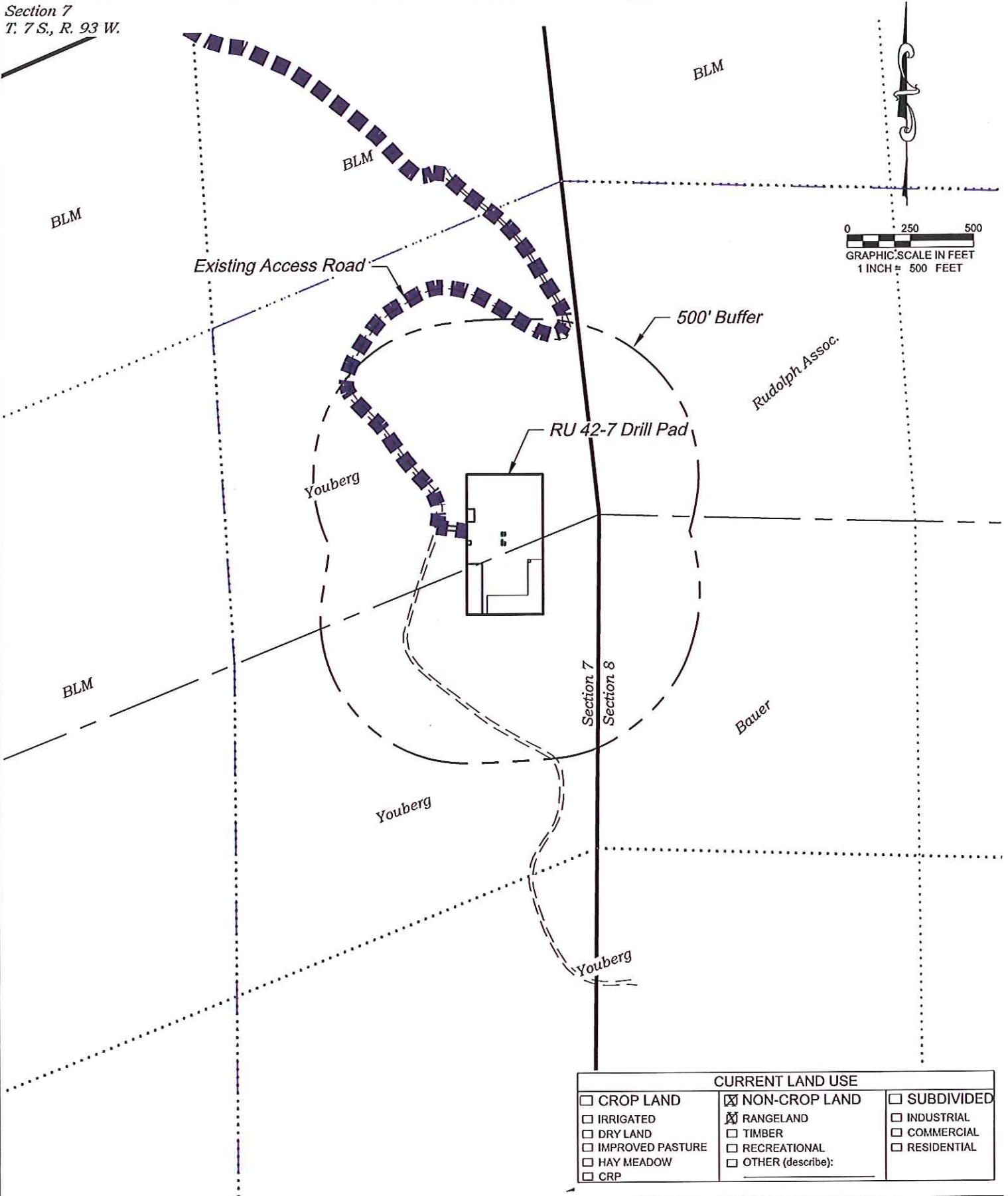


Section 7  
T. 7 S., R. 93 W.



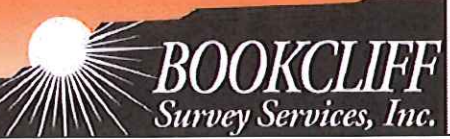
CURRENT LAND USE		
<input type="checkbox"/> CROP LAND	<input checked="" type="checkbox"/> NON-CROP LAND	<input type="checkbox"/> SUBDIVIDED
<input type="checkbox"/> IRRIGATED	<input checked="" type="checkbox"/> RANGELAND	<input type="checkbox"/> INDUSTRIAL
<input type="checkbox"/> DRY LAND	<input type="checkbox"/> TIMBER	<input type="checkbox"/> COMMERCIAL
<input type="checkbox"/> IMPROVED PASTURE	<input type="checkbox"/> RECREATIONAL	<input type="checkbox"/> RESIDENTIAL
<input type="checkbox"/> HAY MEADOW	<input type="checkbox"/> OTHER (describe):	
<input type="checkbox"/> CRP		

REVISED: 12/3/13

SCALE: 1" = 500'  
 DATE: 10/9/13  
 PLAT: 6 of 7  
 PROJECT: Valley  
 DFT: cws

Construction Plan Prepared for:  
**WPXENERGY**  
 WPX Energy Rocky Mountain, LLC  
 RU 42-7 Drill Pad - Plat 6  
 LOCATION

136 East Third Street  
 Rifle, Colorado 81650  
 Ph. (970) 625-2720  
 Fax (970) 625-2773



Visible Improvements to Well Head (ft.)

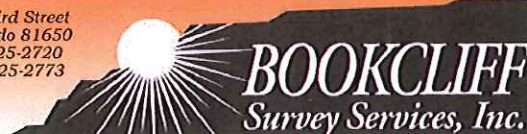
Description	Building	Building Unit	High Occu. Building	DOAA	Public Road	Above Ground Utility	Railroad	Property Line
RU 432-7	>5280	>5280	>5280	>5280	>5280	341° 2346	>5280	91° 372
RU 42-7	>5280	>5280	>5280	>5280	>5280	341° 2339	>5280	91° 372
RU 431-7	>5280	>5280	>5280	>5280	>5280	341° 2310	>5280	91° 372
RU 341-7	>5280	>5280	>5280	>5280	>5280	341° 2303	>5280	91° 372
RU 332-7	>5280	>5280	>5280	>5280	>5280	341° 2342	>5280	91° 382
RU 32-7	>5280	>5280	>5280	>5280	>5280	341° 2335	>5280	91° 382
RU 531-7	>5280	>5280	>5280	>5280	>5280	341° 2328	>5280	91° 382
RU 331-7	>5280	>5280	>5280	>5280	>5280	341° 2307	>5280	91° 382
RU 41-7	>5280	>5280	>5280	>5280	>5280	341° 2300	>5280	91° 382

Production Equipment

Seperators	>5280	>5280	>5280	>5280	>5280	341° 2164	>5280	91° 493
Tanks	>5280	>5280	>5280	>5280	>5280	341° 2367	>5280	91° 460

REVISED: 12/3/13

136 East Third Street  
Rifle, Colorado 81650  
Ph. (970) 625-2720  
Fax (970) 625-2773



SCALE: 1" = 500'  
DATE: 10/9/13  
PLAT: 6C of 7  
PROJECT: Valley  
DFT: cws

Construction Plan Prepared for:  
**WPXENERGY** WPX Energy Rocky Mountain, LLC

RU 42-7 Drill Pad - Plat 6-C  
LOCATION TABLE