

BONANZA CREEK ENERGY OPERATING

Well Name: **State Seventy Holes O-K-6HNB**

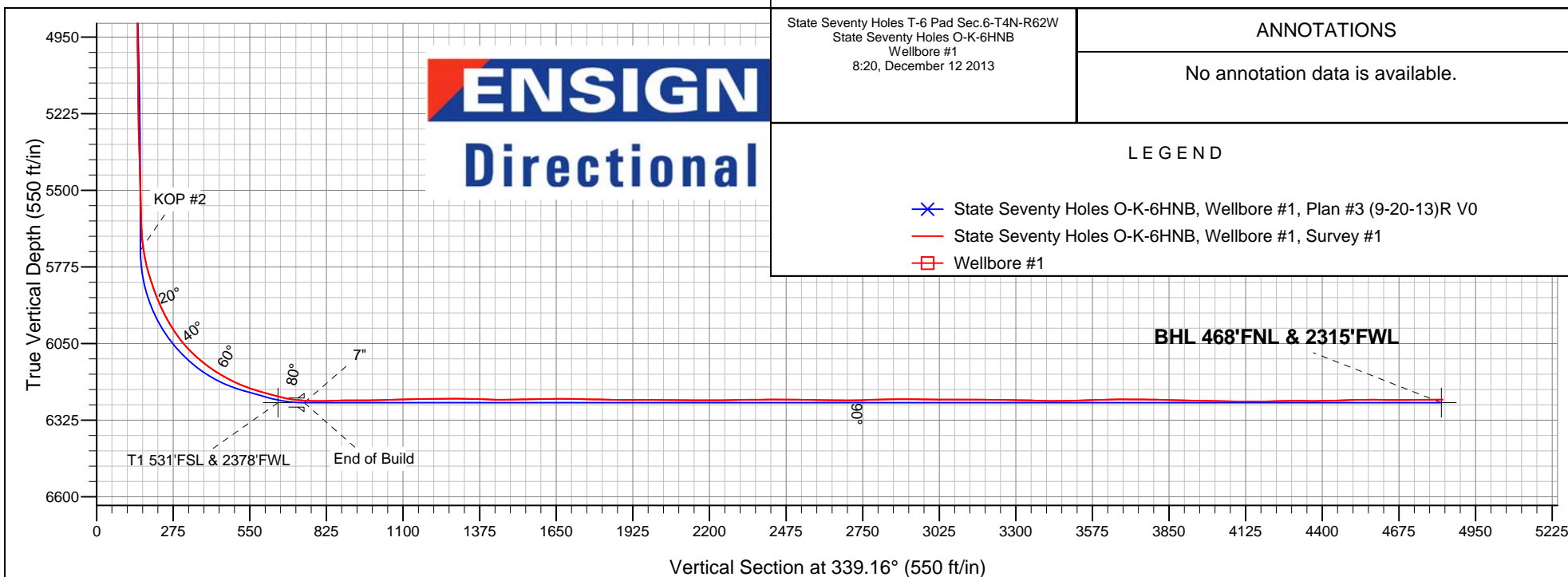
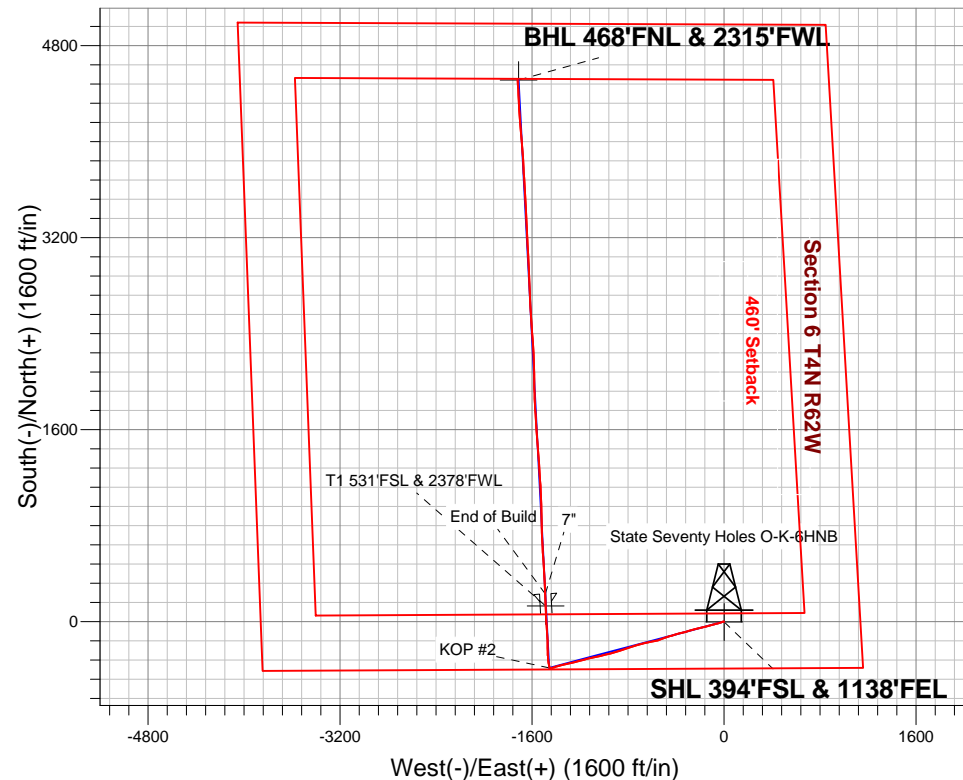
Surface Location: State Seventy Holes T-6 Pad Sec.6-T4N-R62W
North American Datum 1983 , US State Plane 1983 , Colorado Northern Zone
Ground Elevation: 4530.0

+N/-S	+E/-W	Northing	Easting	Latitude	Longitude	Slot
0.0	0.0	1367055.39	3316959.39	40.335390	-104.363000	

RKB - 13' WELL @ 4543.0ft (RKB - 13')

FINAL SURVEY

Projected Bottom Hole Location
11133' MD 6251' TVD 4516' N & 1719' W of SHL
90.5 degree Incl @ 357.1 degree AZM





BONANZA CREEK ENERGY OPERATING

SEC.6-T4N-R62W

State Seventy Holes T-6 Pad Sec.6-T4N-R62W

State Seventy Holes O-K-6HNB

Wellbore #1

Design: Wellbore #1

Standard Survey Report

12 December, 2013

Company:	BONANZA CREEK ENERGY OPERATING	Local Co-ordinate Reference:	Well State Seventy Holes O-K-6HNB
Project:	SEC.6-T4N-R62W	TVD Reference:	WELL @ 4543.0ft (RKB - 13')
Site:	State Seventy Holes T-6 Pad Sec.6-T4N-R62W	MD Reference:	WELL @ 4543.0ft (RKB - 13')
Well:	State Seventy Holes O-K-6HNB	North Reference:	True
Wellbore:	Wellbore #1	Survey Calculation Method:	Minimum Curvature
Design:	Wellbore #1	Database:	Landmark

Survey										
Measured Depth (ft)	Inclination (°)	Azimuth (°)	Vertical Depth (ft)	+N/-S (ft)	+E/-W (ft)	Vertical Section (ft)	Dogleg Rate (°/100ft)	Build Rate (°/100ft)	Turn Rate (°/100ft)	
1,246.0	20.70	256.40	1,220.8	-47.7	-177.2	18.4	0.53	-0.41	0.91	
1,367.0	18.20	257.20	1,334.8	-56.9	-216.4	23.8	2.08	-2.07	0.66	
1,512.0	18.60	255.50	1,472.4	-67.8	-260.9	29.5	0.46	0.28	-1.17	
1,639.0	16.90	251.30	1,593.4	-78.7	-298.0	32.4	1.68	-1.34	-3.31	
1,766.0	19.00	257.10	1,714.2	-89.3	-335.6	35.9	2.17	1.65	4.57	
1,893.0	18.50	253.60	1,834.5	-99.6	-375.1	40.4	0.97	-0.39	-2.76	
2,020.0	19.30	255.10	1,954.6	-110.7	-414.7	44.1	0.74	0.63	1.18	
2,147.0	17.90	252.50	2,075.0	-121.9	-453.6	47.4	1.28	-1.10	-2.05	
2,274.0	19.20	249.90	2,195.4	-135.0	-491.9	48.8	1.21	1.02	-2.05	
2,401.0	19.80	249.90	2,315.1	-149.6	-531.7	49.3	0.47	0.47	0.00	
2,528.0	20.80	258.70	2,434.2	-161.4	-574.0	53.4	2.53	0.79	6.93	
2,657.0	20.50	259.00	2,555.0	-170.2	-618.6	61.0	0.25	-0.23	0.23	
2,785.0	18.30	257.10	2,675.7	-178.9	-660.2	67.6	1.79	-1.72	-1.48	
2,913.0	17.60	251.30	2,797.5	-189.6	-698.1	71.1	1.50	-0.55	-4.53	
3,042.0	18.10	256.50	2,920.3	-200.6	-736.1	74.4	1.29	0.39	4.03	
3,170.0	18.30	253.20	3,041.9	-211.0	-774.7	78.4	0.82	0.16	-2.58	
3,298.0	19.10	249.70	3,163.1	-224.1	-813.6	80.0	1.08	0.63	-2.73	
3,427.0	19.10	250.60	3,285.0	-238.4	-853.3	80.7	0.23	0.00	0.70	
3,555.0	20.40	253.70	3,405.5	-251.6	-894.4	83.0	1.30	1.02	2.42	
3,683.0	21.90	257.10	3,524.9	-263.2	-939.1	88.0	1.51	1.17	2.66	
3,812.0	21.70	255.10	3,644.6	-274.7	-985.6	93.8	0.60	-0.16	-1.55	
3,940.0	21.50	256.50	3,763.6	-286.3	-1,031.3	99.3	0.43	-0.16	1.09	
4,068.0	20.90	257.40	3,883.0	-296.7	-1,076.4	105.5	0.53	-0.47	0.70	
4,197.0	20.60	258.50	4,003.6	-306.3	-1,121.1	112.5	0.38	-0.23	0.85	
4,325.0	20.30	255.10	4,123.6	-316.5	-1,164.6	118.5	0.96	-0.23	-2.66	
4,453.0	19.50	256.00	4,243.9	-327.4	-1,206.8	123.3	0.67	-0.63	0.70	
4,582.0	17.60	253.70	4,366.2	-338.0	-1,246.4	127.4	1.58	-1.47	-1.78	
4,710.0	17.00	256.40	4,488.4	-347.9	-1,283.2	131.3	0.78	-0.47	2.11	
4,838.0	16.50	259.00	4,611.0	-355.7	-1,319.2	136.8	0.70	-0.39	2.03	
4,967.0	16.00	257.60	4,734.8	-363.1	-1,354.5	142.5	0.49	-0.39	-1.09	
5,095.0	13.10	253.00	4,858.7	-371.1	-1,385.6	146.1	2.44	-2.27	-3.59	
5,223.0	9.40	250.90	4,984.2	-378.8	-1,409.4	147.3	2.91	-2.89	-1.64	
5,352.0	7.20	254.30	5,111.9	-384.4	-1,427.1	148.4	1.75	-1.71	2.64	
5,480.0	4.80	262.30	5,239.2	-387.3	-1,440.2	150.3	1.98	-1.88	6.25	
5,608.0	3.30	277.80	5,366.8	-387.5	-1,449.1	153.3	1.44	-1.17	12.11	
5,737.0	1.90	333.40	5,495.7	-385.1	-1,453.8	157.2	2.11	-1.09	43.10	
5,865.0	1.30	345.70	5,623.7	-381.8	-1,455.1	160.8	0.54	-0.47	9.61	
5,908.0	4.70	357.40	5,666.6	-379.5	-1,455.3	162.9	7.99	7.91	27.21	
5,950.0	8.30	352.50	5,708.3	-374.8	-1,455.8	167.5	8.66	8.57	-11.67	
5,993.0	12.00	349.50	5,750.7	-367.3	-1,457.0	174.9	8.69	8.60	-6.98	
6,036.0	15.90	347.20	5,792.4	-357.2	-1,459.1	185.2	9.16	9.07	-5.35	
6,078.0	18.70	350.40	5,832.5	-344.9	-1,461.5	197.5	7.04	6.67	7.62	
6,121.0	21.40	353.00	5,872.9	-330.4	-1,463.6	211.9	6.61	6.28	6.05	
6,164.0	25.00	355.00	5,912.4	-313.5	-1,465.3	228.2	8.57	8.37	4.65	
6,207.0	28.60	356.90	5,950.8	-294.2	-1,466.7	246.8	8.60	8.37	4.42	
6,249.0	33.00	358.30	5,986.8	-272.7	-1,467.6	267.2	10.61	10.48	3.33	
6,292.0	37.50	358.70	6,021.9	-247.9	-1,468.2	290.6	10.48	10.47	0.93	
6,335.0	42.40	358.50	6,054.9	-220.3	-1,468.9	316.6	11.40	11.40	-0.47	
6,378.0	47.70	359.00	6,085.3	-189.9	-1,469.6	345.3	12.35	12.33	1.16	
6,421.0	52.30	358.70	6,112.9	-157.0	-1,470.2	376.3	10.71	10.70	-0.70	
6,463.0	56.20	357.60	6,137.4	-122.9	-1,471.3	408.5	9.53	9.29	-2.62	
6,506.0	59.90	355.70	6,160.2	-86.5	-1,473.5	443.3	9.39	8.60	-4.42	
6,549.0	64.00	355.20	6,180.4	-48.7	-1,476.5	479.7	9.59	9.53	-1.16	
6,592.0	68.10	355.50	6,197.8	-9.5	-1,479.7	517.4	9.56	9.53	0.70	

Company:	BONANZA CREEK ENERGY OPERATING	Local Co-ordinate Reference:	Well State Seventy Holes O-K-6HNB
Project:	SEC.6-T4N-R62W	TVD Reference:	WELL @ 4543.0ft (RKB - 13')
Site:	State Seventy Holes T-6 Pad Sec.6-T4N-R62W	MD Reference:	WELL @ 4543.0ft (RKB - 13')
Well:	State Seventy Holes O-K-6HNB	North Reference:	True
Wellbore:	Wellbore #1	Survey Calculation Method:	Minimum Curvature
Design:	Wellbore #1	Database:	Landmark

Survey										
Measured Depth (ft)	Inclination (°)	Azimuth (°)	Vertical Depth (ft)	+N/-S (ft)	+E/-W (ft)	Vertical Section (ft)	Dogleg Rate (°/100ft)	Build Rate (°/100ft)	Turn Rate (°/100ft)	
6,635.0	72.40	357.30	6,212.4	30.9	-1,482.2	556.1	10.75	10.00	4.19	
6,677.0	75.00	357.00	6,224.2	71.1	-1,484.2	594.4	6.23	6.19	-0.71	
6,720.0	75.50	358.70	6,235.1	112.7	-1,485.8	633.8	4.00	1.16	3.95	
6,744.1	77.07	358.59	6,240.8	136.1	-1,486.3	655.9	6.53	6.51	-0.47	
T1 531'FSL & 2378'FWL										
6,763.0	78.30	358.50	6,244.9	154.5	-1,486.8	673.3	6.53	6.51	-0.46	
6,806.0	82.90	357.40	6,251.9	196.9	-1,488.3	713.4	10.99	10.70	-2.56	
6,842.0	87.50	357.60	6,254.9	232.8	-1,489.9	747.5	12.79	12.78	0.56	
6,933.0	91.70	357.10	6,255.5	323.6	-1,494.1	833.9	4.65	4.62	-0.55	
6,976.0	91.40	357.30	6,254.4	366.6	-1,496.2	874.8	0.84	-0.70	0.47	
7,018.0	90.20	357.10	6,253.8	408.5	-1,498.2	914.7	2.90	-2.86	-0.48	
7,060.0	90.00	356.60	6,253.7	450.5	-1,500.5	954.7	1.28	-0.48	-1.19	
7,103.0	91.00	356.20	6,253.3	493.4	-1,503.2	995.8	2.50	2.33	-0.93	
7,145.0	91.60	355.70	6,252.4	535.2	-1,506.2	1,036.0	1.86	1.43	-1.19	
7,188.0	91.50	356.40	6,251.2	578.1	-1,509.2	1,077.1	1.64	-0.23	1.63	
7,231.0	91.70	356.90	6,250.0	621.0	-1,511.7	1,118.1	1.25	0.47	1.16	
7,273.0	91.00	357.30	6,249.0	663.0	-1,513.8	1,158.1	1.92	-1.67	0.95	
7,316.0	90.20	358.00	6,248.6	705.9	-1,515.6	1,198.9	2.47	-1.86	1.63	
7,359.0	90.90	358.00	6,248.2	748.9	-1,517.1	1,239.6	1.63	1.63	0.00	
7,401.0	90.20	359.20	6,247.8	790.9	-1,518.1	1,279.2	3.31	-1.67	2.86	
7,444.0	89.20	358.80	6,248.0	833.9	-1,518.8	1,319.6	2.50	-2.33	-0.93	
7,487.0	87.80	358.30	6,249.1	876.9	-1,519.9	1,360.2	3.46	-3.26	-1.16	
7,530.0	88.20	358.10	6,250.6	919.8	-1,521.3	1,400.8	1.04	0.93	-0.47	
7,573.0	89.70	358.10	6,251.4	962.8	-1,522.7	1,441.4	3.49	3.49	0.00	
7,615.0	90.90	358.00	6,251.2	1,004.7	-1,524.1	1,481.2	2.87	2.86	-0.24	
7,658.0	90.50	358.00	6,250.6	1,047.7	-1,525.6	1,521.9	0.93	-0.93	0.00	
7,701.0	92.20	357.80	6,249.6	1,090.7	-1,527.2	1,562.6	3.98	3.95	-0.47	
7,744.0	90.50	356.90	6,248.6	1,133.6	-1,529.2	1,603.4	4.47	-3.95	-2.09	
7,786.0	89.30	356.20	6,248.7	1,175.5	-1,531.7	1,643.5	3.31	-2.86	-1.67	
7,829.0	90.20	356.20	6,248.9	1,218.4	-1,534.6	1,684.6	2.09	2.09	0.00	
7,872.0	89.10	355.90	6,249.1	1,261.3	-1,537.5	1,725.8	2.65	-2.56	-0.70	
7,915.0	89.30	355.70	6,249.7	1,304.2	-1,540.7	1,767.0	0.66	0.47	-0.47	
7,957.0	88.50	356.40	6,250.6	1,346.1	-1,543.6	1,807.1	2.53	-1.90	1.67	
8,000.0	88.70	355.90	6,251.6	1,389.0	-1,546.5	1,848.2	1.25	0.47	-1.16	
8,043.0	89.40	356.60	6,252.3	1,431.9	-1,549.3	1,889.3	2.30	1.63	1.63	
8,085.0	90.20	355.70	6,252.5	1,473.8	-1,552.1	1,929.5	2.87	1.90	-2.14	
8,128.0	90.00	355.90	6,252.4	1,516.7	-1,555.2	1,970.7	0.66	-0.47	0.47	
8,171.0	90.40	355.30	6,252.2	1,559.6	-1,558.5	2,011.9	1.68	0.93	-1.40	
8,214.0	89.40	355.50	6,252.3	1,602.4	-1,562.0	2,053.2	2.37	-2.33	0.47	
8,257.0	89.00	356.20	6,252.9	1,645.3	-1,565.1	2,094.4	1.87	-0.93	1.63	
8,299.0	89.50	356.20	6,253.5	1,687.2	-1,567.9	2,134.6	1.19	1.19	0.00	
8,342.0	89.60	356.20	6,253.8	1,730.1	-1,570.7	2,175.7	0.23	0.23	0.00	
8,385.0	90.50	356.70	6,253.8	1,773.0	-1,573.4	2,216.7	2.39	2.09	1.16	
8,428.0	91.40	356.70	6,253.1	1,816.0	-1,575.9	2,257.7	2.09	2.09	0.00	
8,471.0	91.20	357.80	6,252.1	1,858.9	-1,577.9	2,298.6	2.60	-0.47	2.56	
8,513.0	90.60	358.80	6,251.4	1,900.9	-1,579.2	2,338.3	2.78	-1.43	2.38	
8,556.0	89.40	358.70	6,251.4	1,943.9	-1,580.1	2,378.8	2.80	-2.79	-0.23	
8,599.0	90.30	359.70	6,251.5	1,986.9	-1,580.7	2,419.2	3.13	2.09	2.33	
8,642.0	91.20	359.70	6,251.0	2,029.9	-1,580.9	2,459.4	2.09	2.09	0.00	
8,684.0	89.20	359.20	6,250.8	2,071.8	-1,581.3	2,498.8	4.91	-4.76	-1.19	
8,727.0	89.10	358.70	6,251.5	2,114.8	-1,582.1	2,539.3	1.19	-0.23	-1.16	
8,770.0	89.00	358.10	6,252.2	2,157.8	-1,583.3	2,579.9	1.41	-0.23	-1.40	
8,813.0	88.70	357.80	6,253.0	2,200.8	-1,584.9	2,620.6	0.99	-0.70	-0.70	
8,855.0	89.10	356.40	6,253.8	2,242.7	-1,587.0	2,660.5	3.47	0.95	-3.33	

Company:	BONANZA CREEK ENERGY OPERATING	Local Co-ordinate Reference:	Well State Seventy Holes O-K-6HNB
Project:	SEC.6-T4N-R62W	TVD Reference:	WELL @ 4543.0ft (RKB - 13')
Site:	State Seventy Holes T-6 Pad Sec.6-T4N-R62W	MD Reference:	WELL @ 4543.0ft (RKB - 13')
Well:	State Seventy Holes O-K-6HNB	North Reference:	True
Wellbore:	Wellbore #1	Survey Calculation Method:	Minimum Curvature
Design:	Wellbore #1	Database:	Landmark

Survey

Measured Depth (ft)	Inclination (°)	Azimuth (°)	Vertical Depth (ft)	+N/-S (ft)	+E/-W (ft)	Vertical Section (ft)	Dogleg Rate (°/100ft)	Build Rate (°/100ft)	Turn Rate (°/100ft)
8,898.0	90.70	355.70	6,253.9	2,285.6	-1,590.0	2,701.7	4.06	3.72	-1.63
8,941.0	91.50	355.70	6,253.1	2,328.5	-1,593.2	2,742.9	1.86	1.86	0.00
8,984.0	92.30	356.00	6,251.7	2,371.3	-1,596.3	2,784.1	1.99	1.86	0.70
9,026.0	91.30	356.20	6,250.3	2,413.2	-1,599.1	2,824.2	2.43	-2.38	0.48
9,069.0	90.70	356.40	6,249.6	2,456.1	-1,601.9	2,865.3	1.47	-1.40	0.47
9,112.0	90.00	356.20	6,249.3	2,499.0	-1,604.7	2,906.4	1.69	-1.63	-0.47
9,155.0	88.70	356.20	6,249.8	2,541.9	-1,607.5	2,947.5	3.02	-3.02	0.00
9,198.0	89.40	356.20	6,250.5	2,584.8	-1,610.4	2,988.6	1.63	1.63	0.00
9,240.0	90.00	356.40	6,250.8	2,626.7	-1,613.1	3,028.7	1.51	1.43	0.48
9,283.0	89.60	357.40	6,250.9	2,669.7	-1,615.4	3,069.7	2.50	-0.93	2.33
9,325.0	90.10	357.30	6,251.0	2,711.6	-1,617.4	3,109.6	1.21	1.19	-0.24
9,369.0	89.30	358.00	6,251.2	2,755.6	-1,619.2	3,151.3	2.42	-1.82	1.59
9,411.0	90.10	358.00	6,251.5	2,797.6	-1,620.6	3,191.1	1.90	1.90	0.00
9,454.0	89.00	358.10	6,251.8	2,840.5	-1,622.1	3,231.8	2.57	-2.56	0.23
9,497.0	89.60	358.10	6,252.3	2,883.5	-1,623.5	3,272.4	1.40	1.40	0.00
9,540.0	88.50	357.30	6,253.0	2,926.5	-1,625.3	3,313.2	3.16	-2.56	-1.86
9,583.0	88.90	357.10	6,254.0	2,969.4	-1,627.4	3,354.1	1.04	0.93	-0.47
9,625.0	88.80	357.10	6,254.9	3,011.4	-1,629.5	3,394.0	0.24	-0.24	0.00
9,668.0	89.10	357.10	6,255.6	3,054.3	-1,631.7	3,434.9	0.70	0.70	0.00
9,711.0	90.70	356.90	6,255.7	3,097.2	-1,633.9	3,475.9	3.75	3.72	-0.47
9,754.0	92.00	357.30	6,254.7	3,140.2	-1,636.1	3,516.8	3.16	3.02	0.93
9,796.0	92.30	357.30	6,253.1	3,182.1	-1,638.1	3,556.6	0.71	0.71	0.00
9,839.0	91.40	356.20	6,251.7	3,225.0	-1,640.5	3,597.6	3.30	-2.09	-2.56
9,882.0	91.40	356.90	6,250.7	3,267.9	-1,643.1	3,638.6	1.63	0.00	1.63
9,925.0	89.90	357.30	6,250.2	3,310.8	-1,645.3	3,679.5	3.61	-3.49	0.93
9,967.0	89.30	357.40	6,250.5	3,352.8	-1,647.2	3,719.4	1.45	-1.43	0.24
10,010.0	90.10	358.10	6,250.7	3,395.8	-1,648.9	3,760.2	2.47	1.86	1.63
10,053.0	88.50	357.80	6,251.2	3,438.7	-1,650.4	3,800.9	3.79	-3.72	-0.70
10,096.0	88.90	358.10	6,252.2	3,481.7	-1,652.0	3,841.6	1.16	0.93	0.70
10,139.0	88.60	356.70	6,253.2	3,524.6	-1,653.9	3,882.4	3.33	-0.70	-3.26
10,181.0	88.90	356.40	6,254.1	3,566.6	-1,656.4	3,922.5	1.01	0.71	-0.71
10,224.0	88.70	356.20	6,255.0	3,609.5	-1,659.2	3,963.6	0.66	-0.47	-0.47
10,267.0	88.50	356.20	6,256.0	3,652.3	-1,662.1	4,004.7	0.47	-0.47	0.00
10,310.0	88.90	356.20	6,257.0	3,695.2	-1,664.9	4,045.8	0.93	0.93	0.00
10,352.0	89.40	356.90	6,257.6	3,737.2	-1,667.4	4,085.9	2.05	1.19	1.67
10,395.0	90.40	357.10	6,257.7	3,780.1	-1,669.7	4,126.8	2.37	2.33	0.47
10,438.0	90.80	356.90	6,257.3	3,823.0	-1,671.9	4,167.7	1.04	0.93	-0.47
10,481.0	90.70	356.20	6,256.7	3,866.0	-1,674.5	4,208.8	1.64	-0.23	-1.63
10,524.0	90.60	355.70	6,256.2	3,908.8	-1,677.6	4,249.9	1.19	-0.23	-1.16
10,566.0	90.70	355.50	6,255.7	3,950.7	-1,680.8	4,290.2	0.53	0.24	-0.48
10,609.0	90.00	355.00	6,255.5	3,993.6	-1,684.3	4,331.5	2.00	-1.63	-1.16
10,652.0	89.40	354.50	6,255.7	4,036.4	-1,688.3	4,372.9	1.82	-1.40	-1.16
10,695.0	90.90	355.00	6,255.6	4,079.2	-1,692.2	4,414.4	3.68	3.49	1.16
10,737.0	92.00	355.30	6,254.5	4,121.0	-1,695.8	4,454.7	2.71	2.62	0.71
10,782.0	92.70	355.90	6,252.7	4,165.9	-1,699.2	4,497.8	2.05	1.56	1.33
10,827.0	90.40	356.20	6,251.4	4,210.7	-1,702.3	4,540.9	5.15	-5.11	0.67
10,872.0	89.30	357.10	6,251.6	4,255.7	-1,704.9	4,583.8	3.16	-2.44	2.00
10,916.0	89.80	356.70	6,251.9	4,299.6	-1,707.3	4,625.7	1.46	1.14	-0.91
10,961.0	89.90	356.20	6,252.0	4,344.5	-1,710.1	4,668.7	1.13	0.22	-1.11
11,006.0	90.30	357.30	6,252.0	4,389.4	-1,712.7	4,711.6	2.60	0.89	2.44
11,051.0	90.50	357.30	6,251.6	4,434.4	-1,714.8	4,754.3	0.44	0.44	0.00
11,078.0	90.50	357.10	6,251.4	4,461.4	-1,716.1	4,780.0	0.74	0.00	-0.74
11,130.1	90.50	357.10	6,250.9	4,513.4	-1,718.7	4,829.6	0.00	0.00	0.00

BHL 470°FNL & 2322°FNL

Company:	BONANZA CREEK ENERGY OPERATING	Local Co-ordinate Reference:	Well State Seventy Holes O-K-6HNB
Project:	SEC.6-T4N-R62W	TVD Reference:	WELL @ 4543.0ft (RKB - 13')
Site:	State Seventy Holes T-6 Pad Sec.6-T4N-R62W	MD Reference:	WELL @ 4543.0ft (RKB - 13')
Well:	State Seventy Holes O-K-6HNB	North Reference:	True
Wellbore:	Wellbore #1	Survey Calculation Method:	Minimum Curvature
Design:	Wellbore #1	Database:	Landmark

Survey									
Measured Depth (ft)	Inclination (°)	Azimuth (°)	Vertical Depth (ft)	+N/-S (ft)	+E/-W (ft)	Vertical Section (ft)	Dogleg Rate (°/100ft)	Build Rate (°/100ft)	Turn Rate (°/100ft)
11,133.0	90.50	357.10	6,250.9	4,516.3	-1,718.9	4,832.3	0.00	0.00	0.00

Design Targets									
Target Name	Dip Angle (°)	Dip Dir. (°)	TVD (ft)	+N/-S (ft)	+E/-W (ft)	Northing (ft)	Easting (ft)	Latitude	Longitude
- hit/miss target									
- Shape									
SHL 390'FSL & 1135'I	0.00	0.00	1.0	-3.6	2.8	1,367,051.80	3,316,962.22	40.335380	-104.362990
- actual wellpath misses target center by 4.6ft at 1.0ft MD (1.0 TVD, 0.0 N, 0.0 E)									
- Point									
T1 531'FSL & 2378'FV	0.00	0.00	6,262.0	131.2	-1,485.9	1,367,167.53	3,315,471.96	40.335750	-104.368330
- actual wellpath misses target center by 21.7ft at 6744.1ft MD (6240.8 TVD, 136.1 N, -1486.3 E)									
- Point									
BHL 470'FNL & 2322'	0.00	0.00	6,262.0	4,513.9	-1,711.4	1,371,546.73	3,315,190.28	40.347780	-104.369140
- actual wellpath misses target center by 13.2ft at 11130.1ft MD (6250.9 TVD, 4513.4 N, -1718.7 E)									
- Point									

Checked By: _____ Approved By: _____ Date: _____