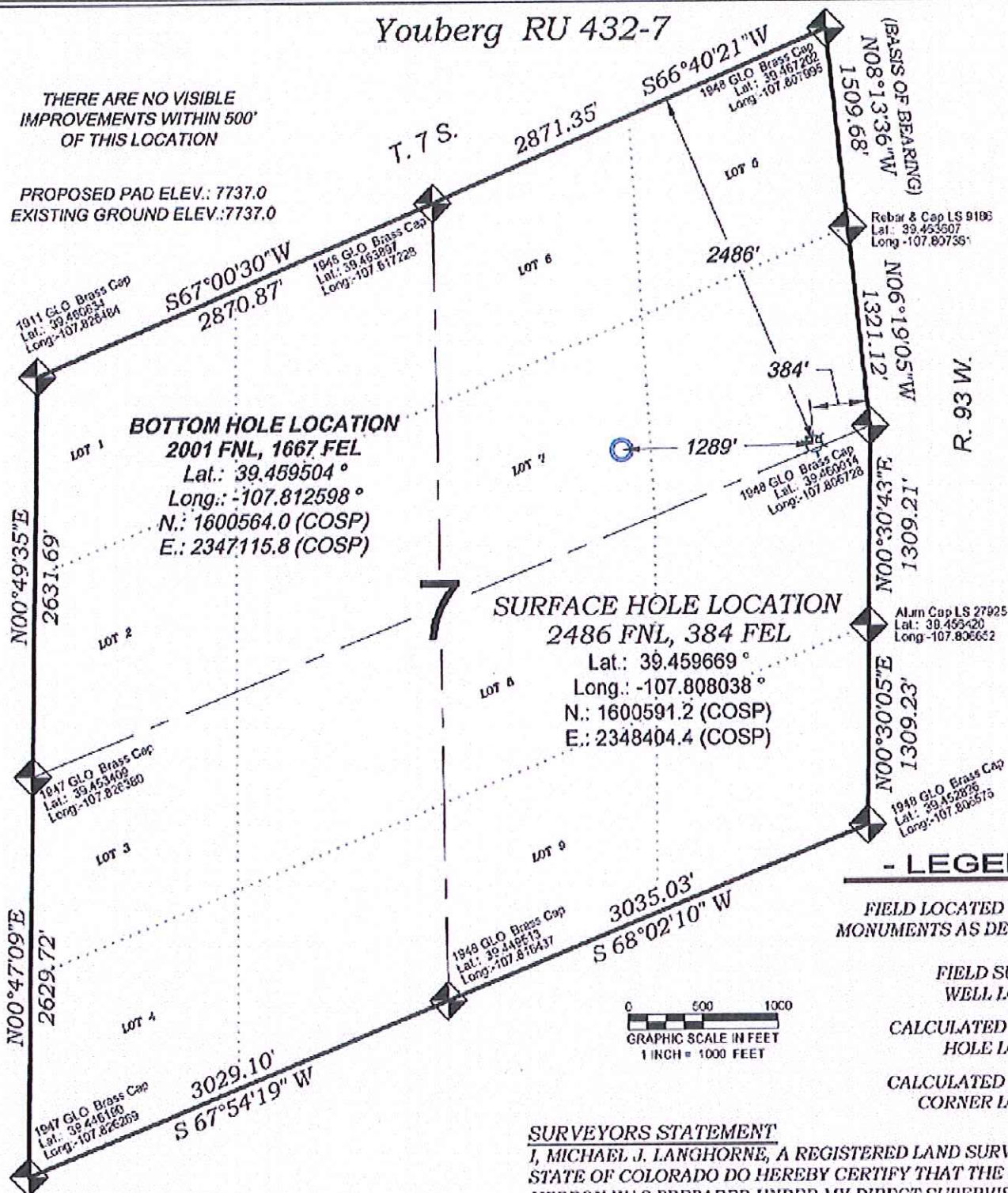


Youberg RU 432-7

THERE ARE NO VISIBLE
IMPROVEMENTS WITHIN 500'
OF THIS LOCATION

PROPOSED PAD ELEV.: 7737.0
EXISTING GROUND ELEV.: 7737.0



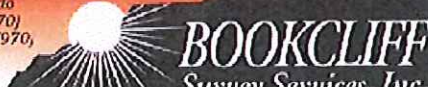
NOTES

- 1) ELEVATIONS BASED ON N.A.S.D. 1988 PUBLISHED COORDINATES.
- 2) LATITUDES AND LONGITUDES ARE BASED ON NAD 83, PUBLISHED COORDINATES
- 3) STATE PLANE COORDINATES ARE BASED ON COLORADO CENTRAL ZONE, U.S. SURVEY FEET.
- 4) ELEVATION MASK SET TO 15"
- 5) GPS OPERATOR J. KIRKPATRICK, OBSERVED A PDOP 2.9 ON SURVEY POINT NUMBER 94875.
- 6) SURFACE AND BOTTOM HOLE LOCATIONS ARE MEASURED 90° FROM SECTION LINES.

REFERENCES

- 1) RESURVEY T. 7 S., R. 935 W., 6 th. P.M. (BLM PLAT)
- 2) U.S.G.S. QUAD: NORTH MAMM PEAK, CO

136 East Third Street
Rifle, Colorado
81650 Ph. (970)
625-2729 Fax (970)
625-2773



SURVEY DATE: 12/10/08
MAP DATE: 10/10/13
SCALE: 1" = 1000'
PLAT: 1 of 1
PROJECT: Valley

WELL LOCATION PLAT Prepared for:
WRXENERGY.

WPX Energy Rocky Mountain, LLC

SE1/4 NE1/4, SECTION 7
T. 7 S., R. 93 W. of the 6th. P.M.
GARFIELD COUNTY, COLORADO