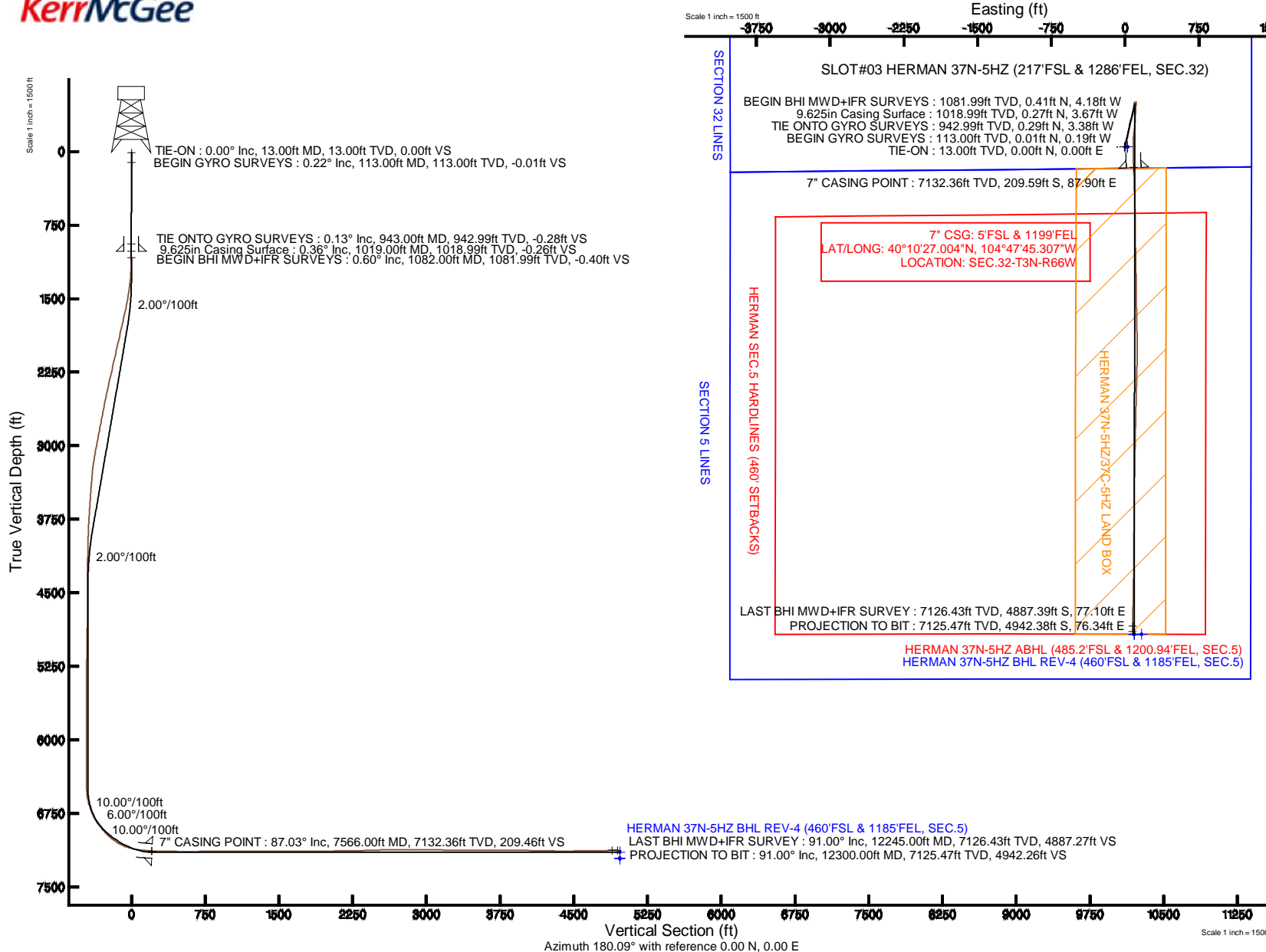


KERR-MCGEE OIL & GAS ONSHORE LP

Location: COLORADO Slot: SLOT#03 HERMAN 37N-5HZ (217°FSL & 1286°FEL, SEC.32)
 Field: WELD COUNTY (KERR MCGEE) Well: HERMAN 37N-5HZ
 Facility: SEC.32-T3N-R66W Wellbore: HERMAN 37N-5HZ PWB

Plot reference wellpath is HERMAN 37N-5HZ (REV-B.0) PWP

True vertical depths are referenced to ENSIGN 138 (13' RKB) (RKB)	Grid System: NAD83 / Lambert Colorado SP, Northern Zone (501), US feet
Measured depths are referenced to ENSIGN 138 (13' RKB) (RKB)	North Reference: True north
ENSGN 138 (13' RKB) (RKB) to Mean Sea Level: 4884 feet	Scale: True distance
Mean Sea Level to Mud line (At Slot: SLOT#03 HERMAN 37N-5HZ (217°FSL & 1286°FEL, SEC.32)): 0 feet	Depths are in feet
Coordinates are in feet referenced to Slot	Created by: robiale01 on 23/Oct/2013





Actual Wellpath Report

HERMAN 37N-5HZ AWP

Page 1 of 7



REFERENCE WELLPATH IDENTIFICATION

Operator	KERR-MCGEE OIL & GAS ONSHORE LP	Slot	SLOT#03 HERMAN 37N-5HZ (217'FSL & 1286'FEL, SEC.32)
Area	COLORADO	Well	HERMAN 37N-5HZ
Field	WELD COUNTY (KERR MCGEE)	Wellbore	HERMAN 37N-5HZ AWB
Facility	SEC.32-T3N-R66W		

REPORT SETUP INFORMATION

Projection System	NAD83 / Lambert Colorado SP, Northern Zone (501), US feet	Software System	WellArchitect® 4.0.0
North Reference	True	User	Robiale01
Scale	0.999958	Report Generated	18/Oct/2013 at 10:13
Convergence at slot	n/a	Database/Source file	WA_ANADARKO/HERMAN_37N-5HZ_AWB.xml

WELLPATH LOCATION

	Local coordinates		Grid coordinates		Geographic coordinates	
	North[ft]	East[ft]	Easting[US ft]	Northing[US ft]	Latitude	Longitude
Slot Location	24.59	94.00	3196655.58	1307282.18	40°10'29.075"N	104°47'46.439"W
Facility Reference Pt			3196561.77	1307256.85	40°10'28.832"N	104°47'47.650"W
Field Reference Pt			3197771.84	1268891.29	40°04'09.600"N	104°47'36.000"W

WELLPATH DATUM

Calculation method	Minimum curvature	ENSIGN 138 (13' RKB) (RKB) to Facility Vertical Datum	4884.00ft
Horizontal Reference Pt	Slot	ENSIGN 138 (13' RKB) (RKB) to Mean Sea Level	4884.00ft
Vertical Reference Pt	ENSIGN 138 (13' RKB) (RKB)	ENSIGN 138 (13' RKB) (RKB) to Mud Line at Slot (SLOT#03 HERMAN 37N-5HZ (217'FSL & 1286'FEL, SEC.32))	4884.00ft
MD Reference Pt	ENSIGN 138 (13' RKB) (RKB)	Section Origin	N 0.00, E 0.00 ft
Field Vertical Reference	Mean Sea Level	Section Azimuth	179.12°

REFERENCE WELLPATH IDENTIFICATION

Operator	KERR-MCGEE OIL & GAS ONSHORE LP	Slot	SLOT#03 HERMAN 37N-5HZ (217'FSL & 1286'FEL, SEC.32)
Area	COLORADO	Well	HERMAN 37N-5HZ
Field	WELD COUNTY (KERR MCGEE)	Wellbore	HERMAN 37N-5HZ AWB
Facility	SEC.32-T3N-R66W		

WELLPATH DATA (95 stations) † = interpolated/extrapolated station

MD [ft]	Inclination [°]	Azimuth [°]	TVD [ft]	Vert Sect [ft]	North [ft]	East [ft]	Latitude	Longitude	DLS [°/100ft]	Comments
0.00†	0.000	272.920	0.00	0.00	0.00	0.00	40°10'29.075"N	104°47'46.439"W	0.00	
13.00	0.000	272.920	13.00	0.00	0.00	0.00	40°10'29.075"N	104°47'46.439"W	0.00	TIE-ON
113.00	0.220	272.920	113.00	-0.01	0.01	-0.19	40°10'29.075"N	104°47'46.441"W	0.22	BEGIN GYRO SURVEYS
213.00	0.280	251.990	213.00	0.05	-0.06	-0.62	40°10'29.074"N	104°47'46.447"W	0.11	
313.00	0.370	259.020	313.00	0.18	-0.19	-1.17	40°10'29.073"N	104°47'46.454"W	0.10	
413.00	0.060	258.280	413.00	0.24	-0.27	-1.53	40°10'29.072"N	104°47'46.459"W	0.31	
513.00	0.160	288.350	513.00	0.21	-0.23	-1.72	40°10'29.073"N	104°47'46.461"W	0.11	
613.00	0.370	312.810	613.00	-0.06	0.03	-2.09	40°10'29.075"N	104°47'46.466"W	0.23	
713.00	0.310	265.930	712.99	-0.27	0.23	-2.59	40°10'29.077"N	104°47'46.472"W	0.28	
813.00	0.170	259.250	812.99	-0.23	0.18	-3.01	40°10'29.077"N	104°47'46.478"W	0.14	
913.00	0.220	307.310	912.99	-0.32	0.27	-3.31	40°10'29.078"N	104°47'46.482"W	0.17	
943.00	0.130	226.400	942.99	-0.34	0.29	-3.38	40°10'29.078"N	104°47'46.483"W	0.79	TIE ONTO GYRO SURVEYS
1082.00	0.600	288.800	1081.99	-0.48	0.41	-4.18	40°10'29.079"N	104°47'46.493"W	0.40	BEGIN BHI MWD+IFR SURVEYS
1174.00	2.400	3.600	1173.96	-2.56	2.49	-4.52	40°10'29.100"N	104°47'46.497"W	2.52	
1266.00	4.300	18.800	1265.80	-7.73	7.68	-3.28	40°10'29.151"N	104°47'46.481"W	2.26	
1357.00	7.700	18.300	1356.29	-16.70	16.70	-0.27	40°10'29.240"N	104°47'46.442"W	3.74	
1449.00	9.400	23.700	1447.26	-29.35	29.43	4.69	40°10'29.366"N	104°47'46.379"W	2.04	
1557.00	11.700	21.500	1553.43	-47.50	47.70	12.25	40°10'29.546"N	104°47'46.281"W	2.16	
1649.00	13.000	12.700	1643.31	-66.19	66.47	17.94	40°10'29.732"N	104°47'46.208"W	2.48	
1834.00	12.800	10.600	1823.64	-106.50	106.92	26.28	40°10'30.132"N	104°47'46.100"W	0.28	
2016.00	12.900	9.200	2001.08	-146.26	146.79	33.24	40°10'30.526"N	104°47'46.011"W	0.18	
2199.00	12.700	8.400	2179.53	-186.22	186.85	39.45	40°10'30.921"N	104°47'45.931"W	0.15	
2382.00	13.200	10.300	2357.88	-226.57	227.31	46.12	40°10'31.321"N	104°47'45.845"W	0.36	
2566.00	11.900	17.000	2537.49	-265.24	266.12	55.42	40°10'31.705"N	104°47'45.725"W	1.06	
2750.00	11.000	17.700	2717.83	-299.93	300.99	66.31	40°10'32.049"N	104°47'45.585"W	0.49	
2934.00	11.200	12.000	2898.39	-333.99	335.19	75.36	40°10'32.387"N	104°47'45.468"W	0.61	
3116.00	10.700	11.300	3077.07	-367.74	369.05	82.35	40°10'32.722"N	104°47'45.378"W	0.28	
3207.00	8.700	14.000	3166.77	-382.65	384.02	85.67	40°10'32.870"N	104°47'45.335"W	2.25	
3301.00	5.700	8.600	3260.02	-394.12	395.53	88.09	40°10'32.984"N	104°47'45.304"W	3.27	
3395.00	5.000	5.800	3353.61	-402.80	404.22	89.20	40°10'33.070"N	104°47'45.290"W	0.79	
3490.00	4.200	359.400	3448.30	-410.39	411.82	89.58	40°10'33.145"N	104°47'45.285"W	1.00	
3585.00	4.200	21.300	3543.05	-417.09	418.54	90.81	40°10'33.211"N	104°47'45.269"W	1.68	
3679.00	3.800	23.400	3636.82	-423.11	424.61	93.29	40°10'33.271"N	104°47'45.237"W	0.45	
3774.00	3.300	12.300	3731.64	-428.65	430.17	95.13	40°10'33.326"N	104°47'45.213"W	0.89	
3868.00	2.900	1.600	3825.51	-433.66	435.19	95.77	40°10'33.376"N	104°47'45.205"W	0.75	
3963.00	1.700	348.400	3920.43	-437.44	438.97	95.55	40°10'33.413"N	104°47'45.208"W	1.37	
4058.00	1.300	5.200	4015.40	-439.90	441.42	95.37	40°10'33.437"N	104°47'45.210"W	0.62	
4249.00	1.400	6.300	4206.34	-444.37	445.90	95.82	40°10'33.481"N	104°47'45.205"W	0.05	
4344.00	0.600	61.600	4301.33	-445.75	447.29	96.39	40°10'33.495"N	104°47'45.197"W	1.23	
4816.00	0.200	61.200	4773.32	-447.28	448.86	99.28	40°10'33.511"N	104°47'45.160"W	0.08	
5291.00	1.800	29.500	5248.23	-454.10	455.76	103.68	40°10'33.579"N	104°47'45.103"W	0.34	
5386.00	0.800	28.800	5343.21	-455.96	457.64	104.74	40°10'33.597"N	104°47'45.090"W	1.05	
5480.00	0.700	203.300	5437.20	-456.01	457.68	104.82	40°10'33.598"N	104°47'45.089"W	1.59	
5670.00	0.100	232.000	5627.20	-454.85	456.52	104.24	40°10'33.586"N	104°47'45.096"W	0.32	
5955.00	0.400	356.800	5912.20	-455.69	457.36	103.98	40°10'33.595"N	104°47'45.099"W	0.16	

Actual Wellpath Report

HERMAN 37N-5HZ AWP

Page 3 of 7

REFERENCE WELLPATH IDENTIFICATION			
Operator	KERR-MCGEE OIL & GAS ONSHORE LP	Slot	SLOT#03 HERMAN 37N-5HZ (217'FSL & 1286'FEL, SEC.32)
Area	COLORADO	Well	HERMAN 37N-5HZ
Field	WELD COUNTY (KERR MCGEE)	Wellbore	HERMAN 37N-5HZ AWB
Facility	SEC.32-T3N-R66W		

WELLPATH DATA (95 stations) † = interpolated/extrapolated station										
MD [ft]	Inclination [°]	Azimuth [°]	TVD [ft]	Vert Sect [ft]	North [ft]	East [ft]	Latitude	Longitude	DLS [°/100ft]	Comments
6049.00	0.900	91.400	6006.19	-455.99	457.66	104.70	40°10'33.598"N	104°47'45.090"W	1.08	
6144.00	1.000	120.100	6101.18	-455.54	457.23	106.17	40°10'33.593"N	104°47'45.071"W	0.51	
6333.00	1.500	96.800	6290.13	-454.36	456.11	110.05	40°10'33.582"N	104°47'45.021"W	0.37	
6427.00	0.900	108.000	6384.11	-453.95	455.74	111.97	40°10'33.579"N	104°47'44.996"W	0.68	
6522.00	0.800	94.600	6479.10	-453.65	455.45	113.34	40°10'33.576"N	104°47'44.979"W	0.23	
6616.00	7.500	185.200	6572.83	-447.48	449.28	113.44	40°10'33.515"N	104°47'44.978"W	8.03	
6712.00	16.800	184.200	6666.58	-427.38	429.16	111.85	40°10'33.316"N	104°47'44.998"W	9.69	
6806.00	24.000	184.400	6754.62	-394.77	396.51	109.39	40°10'32.993"N	104°47'45.030"W	7.66	
6900.00	32.800	182.700	6837.23	-350.24	351.93	106.72	40°10'32.553"N	104°47'45.064"W	9.40	
6995.00	40.300	182.700	6913.49	-293.82	295.46	104.06	40°10'31.995"N	104°47'45.098"W	7.89	
7090.00	48.300	185.400	6981.44	-227.79	229.35	99.26	40°10'31.341"N	104°47'45.160"W	8.65	
7184.00	57.500	186.400	7038.08	-153.43	154.86	91.52	40°10'30.605"N	104°47'45.260"W	9.82	
7279.00	66.900	184.300	7082.34	-69.98	71.28	83.77	40°10'29.779"N	104°47'45.360"W	10.09	
7373.00	78.000	179.200	7110.66	19.38	-18.13	81.16	40°10'28.896"N	104°47'45.394"W	12.89	
7468.00	84.900	177.600	7124.77	113.26	-111.97	83.79	40°10'27.968"N	104°47'45.360"W	7.45	
7519.00	85.200	177.500	7129.17	164.05	-162.74	85.96	40°10'27.467"N	104°47'45.332"W	0.62	
7566.00†	87.028	177.762	7132.36	210.92	-209.59	87.90	40°10'27.004"N	104°47'45.307"W	3.93	7" CASING POINT
7609.00	88.700	178.000	7133.96	253.88	-252.53	89.49	40°10'26.580"N	104°47'45.286"W	3.93	
7798.00	89.400	178.200	7137.09	442.82	-441.40	95.75	40°10'24.713"N	104°47'45.205"W	0.39	
7986.00	90.200	178.700	7137.75	630.81	-629.32	100.84	40°10'22.856"N	104°47'45.140"W	0.50	
8082.00	90.900	179.000	7136.83	726.80	-725.30	102.77	40°10'21.908"N	104°47'45.115"W	0.79	
8272.00	90.400	179.700	7134.67	916.78	-915.27	104.92	40°10'20.030"N	104°47'45.087"W	0.45	
8367.00	89.000	179.200	7135.17	1011.78	-1010.26	105.83	40°10'19.092"N	104°47'45.076"W	1.56	
8558.00	89.800	178.700	7137.17	1202.77	-1201.22	109.33	40°10'17.205"N	104°47'45.031"W	0.49	
8747.00	91.000	179.500	7135.85	1391.76	-1390.19	112.30	40°10'15.337"N	104°47'44.992"W	0.76	
8842.00	90.200	179.300	7134.86	1486.75	-1485.18	113.30	40°10'14.398"N	104°47'44.980"W	0.87	
9031.00	89.800	178.800	7134.86	1675.75	-1674.15	116.43	40°10'12.531"N	104°47'44.939"W	0.34	
9220.00	90.400	178.800	7134.53	1864.74	-1863.11	120.39	40°10'10.664"N	104°47'44.888"W	0.32	
9314.00	90.800	179.500	7133.54	1958.74	-1957.09	121.78	40°10'09.735"N	104°47'44.870"W	0.86	
9409.00	90.600	180.200	7132.38	2053.72	-2052.08	122.03	40°10'08.796"N	104°47'44.867"W	0.77	
9504.00	90.700	179.900	7131.30	2148.70	-2147.08	121.95	40°10'07.858"N	104°47'44.868"W	0.33	
9598.00	90.900	181.500	7129.99	2242.65	-2241.06	120.80	40°10'06.929"N	104°47'44.883"W	1.72	
9788.00	92.000	181.200	7125.18	2432.45	-2430.94	116.32	40°10'05.052"N	104°47'44.941"W	0.60	
9882.00	91.300	181.700	7122.48	2526.33	-2524.87	113.95	40°10'04.124"N	104°47'44.971"W	0.92	
9977.00	90.400	181.300	7121.07	2621.23	-2619.83	111.46	40°10'03.186"N	104°47'45.003"W	1.04	
10071.00	89.500	181.300	7121.15	2715.17	-2713.80	109.33	40°10'02.257"N	104°47'45.031"W	0.96	
10261.00	89.900	181.200	7122.14	2905.03	-2903.75	105.18	40°10'00.380"N	104°47'45.084"W	0.22	
10355.00	90.200	181.400	7122.06	2998.96	-2997.73	103.05	40°09'59.451"N	104°47'45.112"W	0.38	
10544.00	89.600	181.100	7122.39	3187.83	-3186.68	98.93	40°09'57.584"N	104°47'45.165"W	0.35	
10733.00	89.500	180.800	7123.88	3376.73	-3375.65	95.79	40°09'55.717"N	104°47'45.205"W	0.17	
10921.00	90.400	181.000	7124.04	3564.63	-3563.62	92.84	40°09'53.859"N	104°47'45.243"W	0.49	
11112.00	89.500	179.900	7124.21	3755.58	-3754.61	91.34	40°09'51.972"N	104°47'45.262"W	0.74	
11301.00	89.400	180.400	7126.02	3944.54	-3943.60	90.85	40°09'50.104"N	104°47'45.269"W	0.27	
11491.00	88.800	180.600	7129.01	4134.46	-4133.57	89.19	40°09'48.227"N	104°47'45.290"W	0.33	
11586.00	88.800	180.600	7131.00	4229.40	-4228.55	88.19	40°09'47.288"N	104°47'45.303"W	0.00	

REFERENCE WELLPATH IDENTIFICATION

Operator	KERR-MCGEE OIL & GAS ONSHORE LP	Slot	SLOT#03 HERMAN 37N-5HZ (217'FSL & 1286'FEL, SEC.32)
Area	COLORADO	Well	HERMAN 37N-5HZ
Field	WELD COUNTY (KERR MCGEE)	Wellbore	HERMAN 37N-5HZ AWB
Facility	SEC.32-T3N-R66W		

WELLPATH DATA (95 stations)

MD [ft]	Inclination [°]	Azimuth [°]	TVD [ft]	Vert Sect [ft]	North [ft]	East [ft]	Latitude	Longitude	DLS [°/100ft]	Comments
11680.00	89.600	180.700	7132.31	4323.36	-4322.53	87.13	40°09'46.360"N	104°47'45.317"W	0.86	
11870.00	90.500	181.000	7132.14	4513.27	-4512.51	84.31	40°09'44.482"N	104°47'45.353"W	0.50	
12061.00	91.000	181.300	7129.64	4704.13	-4703.45	80.48	40°09'42.595"N	104°47'45.402"W	0.31	
12245.00	91.000	180.800	7126.43	4888.00	-4887.39	77.10	40°09'40.778"N	104°47'45.446"W	0.27	LAST BHI MWD+IFR SURVEY
12300.00	91.000	180.800	7125.47	4942.97	-4942.38	76.34	40°09'40.234"N	104°47'45.456"W	0.00	PROJECTION TO BIT

HOLE & CASING SECTIONS - Ref Wellbore: HERMAN 37N-5HZ AWB Ref Wellpath: HERMAN 37N-5HZ AWP

String/Diameter	Start MD [ft]	End MD [ft]	Interval [ft]	Start TVD [ft]	End TVD [ft]	Start N/S [ft]	Start E/W [ft]	End N/S [ft]	End E/W [ft]
13.5in Open Hole	13.00	1019.00	1006.00	13.00	1018.99	0.00	0.00	0.27	-3.67
9.625in Casing Surface	13.00	1019.00	1006.00	13.00	1018.99	0.00	0.00	0.27	-3.67
8.75in Open Hole	1019.00	7576.00	6557.00	1018.99	7132.84	0.27	-3.67	-219.57	88.28
7in Casing Intermediate	13.00	7566.00	7553.00	13.00	7132.36	0.00	0.00	-209.59	87.90
6.125in Open Hole	7576.00	12300.00	4724.00	7132.84	7125.47	-219.57	88.28	-4942.38	76.34



Actual Wellpath Report

HERMAN 37N-5HZ AWP

Page 5 of 7



REFERENCE WELLPATH IDENTIFICATION

Operator	KERR-MCGEE OIL & GAS ONSHORE LP	Slot	SLOT#03 HERMAN 37N-5HZ (217'FSL & 1286'FEL, SEC.32)
Area	COLORADO	Well	HERMAN 37N-5HZ
Field	WELD COUNTY (KERR MCGEE)	Wellbore	HERMAN 37N-5HZ AWB
Facility	SEC.32-T3N-R66W		

TARGETS

Name	MD [ft]	TVD [ft]	North [ft]	East [ft]	Grid East [US ft]	Grid North [US ft]	Latitude	Longitude	Shape
BLUFFS RED W 5-3 (150' RADIUS)		0.00	-869.19	-1892.65	3194769.96	1306398.03	40°10'20.485"N	104°48'10.820"W	circle
BLUFFS RED W 5-6 (150' RADIUS)		0.00	-2149.33	-1902.26	3194770.52	1305117.92	40°10'07.835"N	104°48'10.943"W	circle
HERMAN 32-15K (150' RADIUS)		0.00	431.28	-888.75	3195763.47	1307706.37	40°10'33.337"N	104°47'57.889"W	circle
HERMAN 32-16K (150' RADIUS)		0.00	457.13	696.60	3197348.49	1307744.80	40°10'33.592"N	104°47'37.465"W	circle
HERMAN L 32-14 (150' RADIUS)		0.00	381.45	-2001.54	3194651.16	1307647.71	40°10'32.844"N	104°48'12.224"W	circle
KUNZMAN W 05-09 (150' RADIUS)		0.00	-3278.69	790.98	3197472.52	1304010.01	40°09'56.675"N	104°47'36.251"W	circle
UPRC 5-10K6 (150' RADIUS)		0.00	-3598.93	-917.70	3195766.51	1303676.24	40°09'53.510"N	104°47'58.260"W	circle
UPRC 5-15K6 (150' RADIUS)		0.00	-4915.13	-933.68	3195760.97	1302360.02	40°09'40.503"N	104°47'58.465"W	circle
UPRC 5-160 (150' RADIUS)		0.00	-4957.77	418.33	3197113.22	1302328.10	40°09'40.082"N	104°47'41.051"W	circle
UPRC 5-90 (150' RADIUS)		0.00	-3821.53	289.75	3196975.63	1303463.23	40°09'51.310"N	104°47'42.707"W	circle
UPRC W 5-10 JI (150' RADIUS)		0.00	-3287.45	-864.30	3195817.43	1303988.11	40°09'56.588"N	104°47'57.572"W	circle
HERMAN 37N-5HZ BHL REV-3 (460'FSL & 1185'FEL, SEC.5)	7204.00		-4967.58	92.28	3196787.27	1302315.71	40°09'39.985"N	104°47'45.250"W	point
HERMAN 37N-5HZ BHL ON PLAT (460'FSL & 1110'FEL, SEC.5) REV-1	7211.00		-4967.60	167.47	3196862.45	1302316.28	40°09'39.985"N	104°47'44.282"W	point
HERMAN 37N-5HZ BHL REV-2 (460'FSL & 1185'FEL, SEC.5)	7211.00		-4967.58	92.28	3196787.27	1302315.71	40°09'39.985"N	104°47'45.250"W	point
HERMAN 37N-5HZ/37C-5HZ LAND BOX	7500.00	0.00	0.00	0.00	3196655.57	1307282.18	40°10'29.075"N	104°47'46.439"W	polygon
HERMAN SEC.5 HARDLINES (460' SETBACKS)	7500.00	-0.40	26.00	3196681.58	1307281.98	40°10'29.071"N	104°47'46.104"W	polygon	
HERMAN SECTION 32 LINES	7500.00	-0.40	26.00	3196681.58	1307281.98	40°10'29.071"N	104°47'46.104"W	polygon	
HERMAN SECTION 5 LINES	7500.00	-0.40	26.00	3196681.58	1307281.98	40°10'29.071"N	104°47'46.104"W	polygon	



Actual Wellpath Report

HERMAN 37N-5HZ AWP

Page 6 of 7



REFERENCE WELLPATH IDENTIFICATION

Operator	KERR-MCGEE OIL & GAS ONSHORE LP	Slot	SLOT#03 HERMAN 37N-5HZ (217'FSL & 1286'FEL, SEC.32)
Area	COLORADO	Well	HERMAN 37N-5HZ
Field	WELD COUNTY (KERR MCGEE)	Wellbore	HERMAN 37N-5HZ AWB
Facility	SEC.32-T3N-R66W		

WELLPATH COMPOSITION - Ref Wellbore: HERMAN 37N-5HZ AWB Ref Wellpath: HERMAN 37N-5HZ AWP

Start MD [ft]	End MD [ft]	Positional Uncertainty Model	Log Name/Comment	Wellbore
13.00	943.00	Generic gyro - continuous (Standard)	MS GYRODATA SURVEYS <113-943>	HERMAN 37N-5HZ AWB
943.00	7519.00	NaviTrak (MAGCORR,IFR)	BHI NAVITRAK MWD+IFR 8 3/4" <1082-7519>	HERMAN 37N-5HZ AWB
7519.00	12245.00	NaviTrak (MAGCORR,IFR)	BHI NAVITRAK MWD+IFR 6 1/8" <7609-12245>	HERMAN 37N-5HZ AWB
12245.00	12300.00	Blind Drilling (std)	Projection to bit	HERMAN 37N-5HZ AWB

REFERENCE WELLPATH IDENTIFICATION

Operator	KERR-MCGEE OIL & GAS ONSHORE LP	Slot	SLOT#03 HERMAN 37N-5HZ (217'FSL & 1286'FEL, SEC.32)
Area	COLORADO	Well	HERMAN 37N-5HZ
Field	WELD COUNTY (KERR MCGEE)	Wellbore	HERMAN 37N-5HZ AWP
Facility	SEC.32-T3N-R66W		

WELLPATH COMMENTS

MD [ft]	Inclination [°]	Azimuth [°]	TVD [ft]	Comment
13.00	0.000	272.920	13.00	TIE-ON
113.00	0.220	272.920	113.00	BEGIN GYRO SURVEYS
943.00	0.130	226.400	942.99	TIE ONTO GYRO SURVEYS
1082.00	0.600	288.800	1081.99	BEGIN BHI MWD+IFR SURVEYS
7566.00	87.028	177.762	7132.36	7" CASING POINT
12245.00	91.000	180.800	7126.43	LAST BHI MWD+IFR SURVEY
12300.00	91.000	180.800	7125.47	PROJECTION TO BIT