
WEXPRO COMPANY E-BILL

**BW Musser 5
POWDER WASH
Moffat County , Colorado**

**Plug to Abandon Service
19-Jun-2012**

Job Site Documents

The Road to Excellence Starts with Safety

Sold To #: 343491	Ship To #: 2934060	Quote #:	Sales Order #: 9602708
Customer: WEXPRO COMPANY E-BILL		Customer Rep: Slagger, Mike	
Well Name: BW Musser		Well #: 5	API/UWI #:
Field: POWDER WASH	City (SAP): CRAIG	County/Parish: Moffat	State: Colorado
Contractor: Wexpro		Rig/Platform Name/Num: Workover	
Job Purpose: Plug to Abandon Service			
Well Type: Development Well		Job Type: Plug to Abandon Service	
Sales Person: VOLNER, THOMAS		Srvc Supervisor: HYDE, JOSHUA	MBU ID Emp #: 461612

Job Personnel

HES Emp Name	Exp Hrs	Emp #	HES Emp Name	Exp Hrs	Emp #	HES Emp Name	Exp Hrs	Emp #
AMACK, NEVADA	9	516558	BUTIKOFER, TYRELL James	9	516540	FRICKEY, DYLAN McKay	9	494086
HYDE, JOSHUA Wayne	9	461612			461612	OLSEN, BARTLEY Ned	9	392185

Equipment

HES Unit #	Distance-1 way	HES Unit #	Distance-1 way	HES Unit #	Distance-1 way	HES Unit #	Distance-1 way

Job Hours

Date	On Location Hours	Operating Hours	Date	On Location Hours	Operating Hours	Date	On Location Hours	Operating Hours
6-19-2012	9	7						
TOTAL			Total is the sum of each column separately					

Job					Job Times			
Formation Name					Date	Time	Time Zone	
Formation Depth (MD)	Top	Bottom			Called Out	19 - Jun - 2012	01:00	MST
Form Type		BHST	118 degF		On Location	19 - Jun - 2012	05:00	MST
Job depth MD	2865. ft	Job Depth TVD	2865. ft		Job Started	19 - Jun - 2012	09:44	MST
Water Depth		Wk Ht Above Floor			Job Completed	19 - Jun - 2012	14:32	MST
Perforation Depth (MD)	From	To			Departed Loc	19 - Jun - 2012	16:00	MST

Well Data

Description	New / Used	Max pressure psig	Size in	ID in	Weight lbm/ft	Thread	Grade	Top MD ft	Bottom MD ft	Top TVD ft	Bottom TVD ft
Production Casing	Unknown		7.	6.366	23.			.	3000.		
Surface Casing	New		10.75	8.921	36.		J-55	.	311.		
Tubing	Unknown		2.375	1.995	4.7			.	2870.		

Tools and Accessories

Type	Size	Qty	Make	Depth	Type	Size	Qty	Make	Depth	Type	Size	Qty	Make
Guide Shoe					Packer					Top Plug			
Float Shoe					Bridge Plug	7	1	BH	3216	Bottom Plug			
Float Collar					Retainer	7	1	BH	2863	SSR plug set			
Insert Float										Plug Container			
Stage Tool										Centralizers			

Miscellaneous Materials

Gelling Agt		Conc		Surfactant		Conc		Acid Type		Qty		Conc	%
Treatment Fld		Conc		Inhibitor		Conc		Sand Type		Size		Qty	

Fluid Data

Stage/Plug #: 1													
Fluid #	Stage Type	Fluid Name			Qty	Qty uom	Mixing Density lbm/gal	Yield ft3/sk	Mix Fluid Gal/sk	Rate bbl/min	Total Mix Fluid Gal/sk		

Stage/Plug #: 1

Stage/Plug #: 1									
Fluid #	Stage Type	Fluid Name	Qty	Qty uom	Mixing Density lbm/gal	Yield ft ³ /sk	Mix Fluid Gal/sk	Rate bbl/min	Total Mix Fluid Gal/sk
1	Water Ahead		10.00	bbl	8.33	.0	.0	2	
2	Mtn G	CMT - PREMIUM - CLASS G, 94 LB SK (100003685)	55.0	sacks	15.8	1.15	4.98	2	4.98
	94 lbm	CMT - PREMIUM - CLASS G REG OR TYPE V, BULK (100003685)							
	0.1 %	HALAD(R)-322, 50 LB (100003646)							
	4.983 Gal	FRESH WATER							
3	Pozmix	POZMIX A FLYASH (100003690)	70.0	sacks	9.	9.94	70.09	5	70.09
	70.5 lbm	POZMIX A (BULK) FLYASH (100003690)							
	70.092 Gal	FRESH WATER							
	15 lbm	HALLIBURTON GEL, 50 LB SK (100064040)							
4	Mtn G	CMT - PREMIUM - CLASS G, 94 LB SK (100003685)	160.0	sacks	15.8	1.15	4.99	2	4.99
	94 lbm	CMT - PREMIUM - CLASS G REG OR TYPE V, BULK (100003685)							
	4.989 Gal	FRESH WATER							
Calculated Values		Pressures		Volumes					
Displacement	11.06	Shut In: Instant		Lost Returns	0	Cement Slurry	31	Pad	
Top Of Cement	SURFACE	5 Min		Cement Returns	2	Actual Displacement	11	Treatment	
Frac Gradient		15 Min		Spacers	10	Load and Breakdown		Total Job	
Rates									
Circulating	6	Mixing	2	Displacement	2	Avg. Job	2		
Cement Left In Pipe	Amount	0 ft	Reason	Shoe Joint					
Frac Ring # 1 @	ID	Frac ring # 2 @	ID	Frac Ring # 3 @	ID	Frac Ring # 4 @	ID		
The Information Stated Herein Is Correct				Customer Representative Signature					

The Road to Excellence Starts with Safety

Sold To #: 343491	Ship To #: 2934060	Quote #:	Sales Order #: 9602708
Customer: WEXPRO COMPANY E-BILL		Customer Rep: Slagger, Mike	
Well Name: BW Musser	Well #: 5	API/UWI #:	
Field: POWDER WASH	City (SAP): CRAIG	County/Parish: Moffat	State: Colorado
Legal Description:			
Lat: N 0 deg. OR N 0 deg. 0 min. 0 secs.		Long: E 0 deg. OR E 0 deg. 0 min. 0 secs.	
Contractor: Wexpro		Rig/Platform Name/Num: Workover	
Job Purpose: Plug to Abandon Service			Ticket Amount:
Well Type: Development Well		Job Type: Plug to Abandon Service	
Sales Person: VOLNER, THOMAS		Srvc Supervisor: HYDE, JOSHUA	MBU ID Emp #: 461612

Activity Description	Date/Time	Cht #	Rate bbl/ min	Volume bbl		Pressure psig		Comments
				Stage	Total	Tubing	Casing	
Call Out	06/19/2012 01:00							HALLIBURTON CREW CALLED OUT FOR CMT JOB
Pre-Convoy Safety Meeting	06/19/2012 02:45							HES CREW HAD JSA ON DRIVING PROCEDURES
Crew Leave Yard	06/19/2012 03:00							HES DEPARTED YARD FOR LOCATION
Arrive at Location from Service Center	06/19/2012 05:30							REQUESTED ON LOCATION 07:00 BY COMPANY MAN
Assessment Of Location Safety Meeting	06/19/2012 05:45							HES DID WALK AROUND LOCATION AND DISCUSSED RIG UP PROCEDURES
Rig-Up Equipment	06/19/2012 06:00							HES CREW RIGGED UP IRON,BULK EQUIPMENT,WATER FITTINGS AND HOSES
Rig-Up Completed	06/19/2012 06:50							
Wait on Customer or Customer Sub-Contractor Equip	06/19/2012 07:00							WAIT ON CUSTOMER TO RUN TUBING
Wait on Customer or Customer Sub-Contractor Equipm	06/19/2012 09:20							CUSTOMER COMPLETED RUNNING TUBING 2 3/8 4.7 # J-55
Pre-Job Safety Meeting	06/19/2012 09:25							HES,RIG CREW AND COMPANY MAN HAD JSA ON JOB SAFETY AND PROCEDURES
Start Job	06/19/2012 09:43							FILL PUMPS AND LINES
Activity Description	Date/Time	Cht	Rate bbl/ min	Volume bbl		Pressure psig		Comments

Sold To # : 343491

Ship To # :2934060

Quote # :

Sales Order # :

9602708

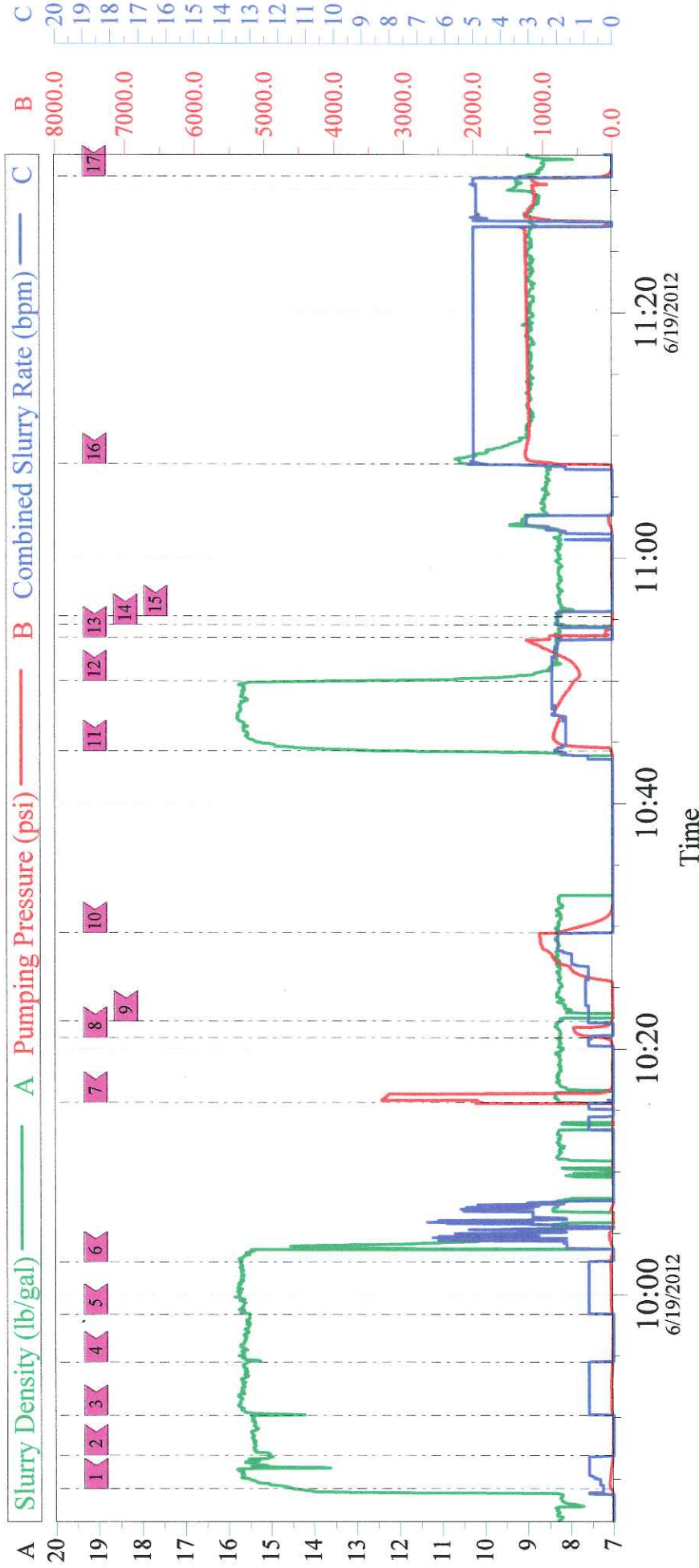
SUMMIT Version: 7.3.0030

Tuesday, June 19, 2012 03:15:00

		#		Stage	Total	Tubing	Casing	
Pump Cement	06/19/2012 09:44		1	9.5	9.5		35.0	PUMPED MOUNTAIN G TOP OUT CMT AT 15.8 PPG 1.15Y 5.01 GAL/SK 59 SKS BULLHEAD SQUEEZE CMT BETWEEN 7" AND 10 3/4" CSG
Pressure Test	06/19/2012 10:15							HES PRESSURE TESTED IRON TO 3500 PSI
Pressure Up Annulus	06/19/2012 10:20		1	2	2		500.0	PUT 500 PSI ON BACKSIDE BETWEEN 2 3/8 TUBING AND 7" CSG
Injection Test	06/19/2012 10:22		2	5	5		1254. 0	
Shutdown	06/19/2012 10:29							SHUTDOWN TO MIX UP SQUEEZE CMT
Pump Cement	06/19/2012 10:44		2	11.5	11.5		635.0	PUMPED MOUNTAIN G PLUG 1 CMT AT 15.80 PPG 1.15 Y 4.99 GAL/SK 55 SKS
Pump Displacement	06/19/2012 10:49		2	8	8		1034. 0	PUMPED 8 BBLS OF H2O DISPLACEMENT
Shutdown	06/19/2012 10:53							SHUTDOWN RIG STUNG OUT OF RETAINER
Pump Displacement	06/19/2012 10:54		2	2	2		120.0	LEFT 3 BBLS OF CMT ON TOP OF RETAINER PER COMPANY MAN REQUEST
Shutdown	06/19/2012 10:55							RIG PULLED 2.5 STANDS
Pump Gel - Start	06/19/2012 11:07		5	123	123		1254. 0	PUMPED POZMIX- PLUG 2 AT 9 PPG 9.94 Y 70.07 GAL/SK 70 SKS
Shutdown	06/19/2012 11:31							SHUTDOWN/ GOT 15 BBLS OF GEL TO SURFACE/
Other	06/19/2012 11:35							RIG PULLED OUT OF HOLE TO TAKE SET TOOL OFF
Other	06/19/2012 12:30							RIG RAN BACK INTO HOLE TO 240' TO SET PLUG 3
Pump Water	06/19/2012 12:55		2	5	5		65.0	PUMPED WATER TO FILL WELL
Pump Cement	06/19/2012 12:59		2	9	9		152.0	PUMPED MOUNTAIN G PLUG 3 AT 15.80 PPG 1.15 Y 5.00 GAL/SK 50SKS

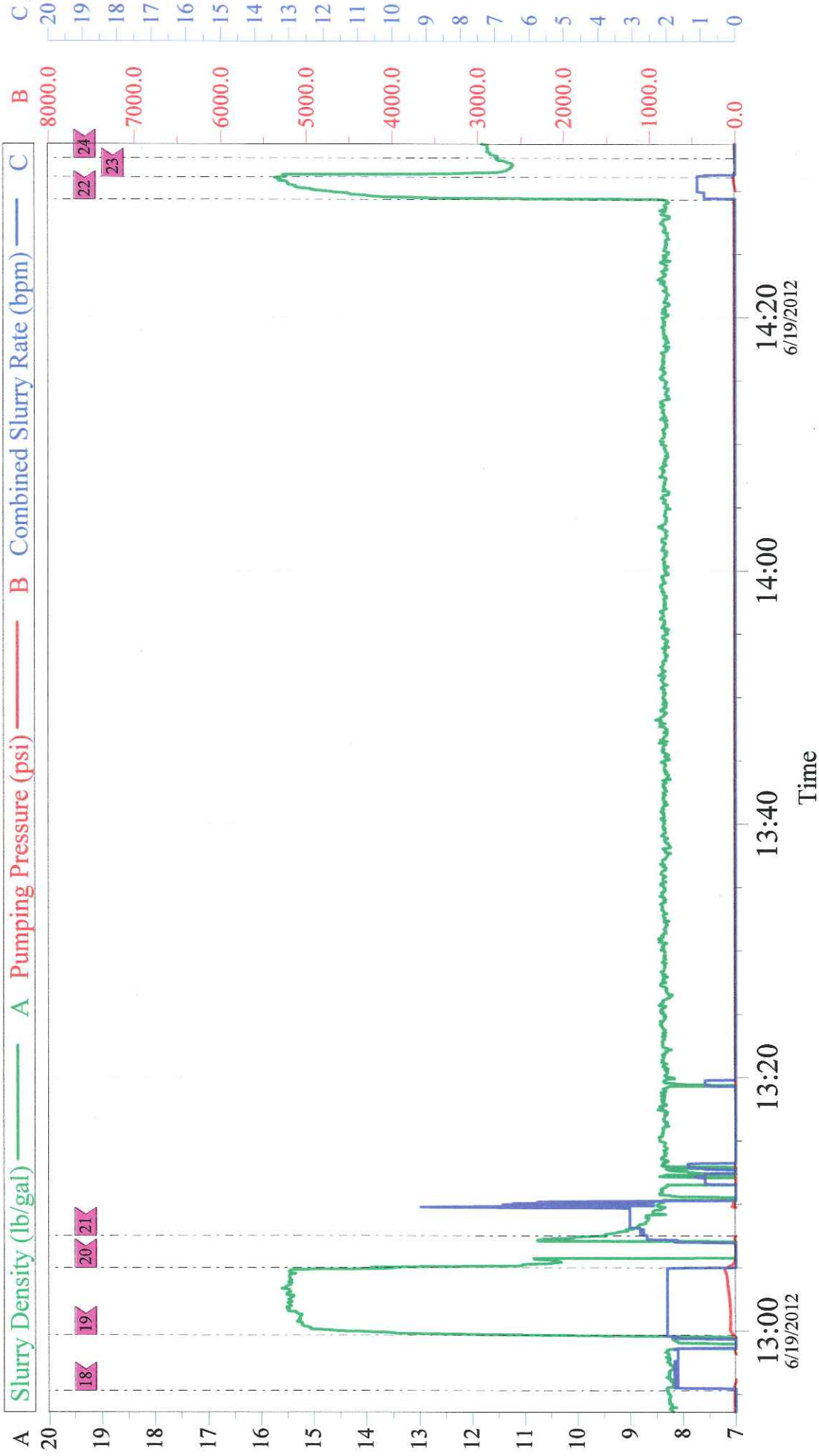
Activity Description	Date/Time	Cht #	Rate bbl/ min	Volume bbl		Pressure psig		Comments
				Stage	Total	Tubing	Casing	
Other	06/19/2012 13:05							RIG PULLED OUT OF HOLE TO TOP OUT WELL
Pump Cement	06/19/2012 14:29		1	3	3		56.0	PUMPED MOUNTAIN G TOP OUT CMT AT 15.8 PPG 1.15 Y 5.00 GAL/SK 40 SKS
End Job	06/19/2012 14:32							
Post-Job Safety Meeting (Pre Rig-Down)	06/19/2012 14:35							HES AND RIG CREW HAD JSA ON RIGGING DOWN EQUIPMENT
Rig-Down Equipment	06/19/2012 14:40							
Rig-Down Completed	06/19/2012 15:45							
Pre-Convoy Safety Meeting	06/19/2012 15:50							
Crew Leave Location	06/19/2012 16:00							
Other	06/19/2012 16:01							JOB WENT AS PLANNED WITH NO ISSUES

WEXPRO BW MUSSER 5 PTA



Local Event Log										
Intersection				Intersection						
		SD	PP	CSR		SD	PP	CSR		
1	START JOB/PUMP TOP OUT CMT	09:44:12	14.52	48.02	2	SHUTDOWN/MIX MORE CMT	09:46:56	15.06	18.00	0.000
3	PUMP TOP OUT CMT	09:50:11	14.48	16.44	4	SHUTDOWN/MIX MORE CMT	09:54:33	15.54	23.00	0.000
5	PUMP TOP OUT CMT	09:58:24	15.51	18.50	6	SHUTDOWN	10:02:40	15.71	47.00	0.851
7	PRESSURE TEST	10:15:40	8.291	1936	8	PUT 500 PSI ON BACKSIDE	10:20:57	8.273	206.1	0.800
9	START INJECTION RATE	10:22:16	8.240	22.00	10	SHUTDOWN	10:29:28	8.302	772.2	0.000
11	PUMP SQUEEZE CMT	10:44:18	12.55	20.07	12	PUMP H2O DISPLACEMENT	10:49:59	13.30	553.6	2.200
13	SHUTDOWN/STING OUT	10:53:32	8.200	915.0	14	PUMP TO PUT CMT ON TOP OF RETAINER	10:54:33	8.160	9.000	2.000
15	SHUTDOWN/RIG PULLED STANDS	10:55:16	8.210	2.000	16	PUMP GEL	11:07:39	10.40	769.0	4.600
17	SHUTDOWN/RIG POOH	11:31:07	9.139	124.8						

WEXPRO BW MUSSER 5 PTA



Local Event Log																	
Intersection				Intersection				Intersection									
		SD	PP	CSR			SD	PP	CSR			SD	PP	CSR			
18	PUMP H2O	12:55:19	8.300	16.00	0.000	19	PUMP PLUG 3 CMT	12:59:41	11.21	36.84	2.000	20	SHUTDOWN	13:05:00	13.83	100.7	0.000
21	WASH LINES	13:07:30	9.478	-2.111	2.606	22	PUMP TOP OUT	14:29:17	8.367	-3.739	0.000	23	SHUTDOWN	14:31:03	15.64	25.00	1.100
24	END JOB	14:32:33	11.54	7.000	0.000												