

# **LEGEND:**

————— EXISTING ROADS  
 - - - - - EXISTING POWER LINE



**GREAT WESTERN OIL & GAS COMPANY**

**LIND EE 20-028HC, 20-029HN & 20-031HN**  
**SECTION 20, T7N, R66W, 6th P.M.**  
**SE 1/4 SW 1/4**



**Utah Engineering & Land Surveying**  
 85 South 200 East Vernal, Utah 84078  
 (435) 789-1017 \* FAX (435) 789-1813

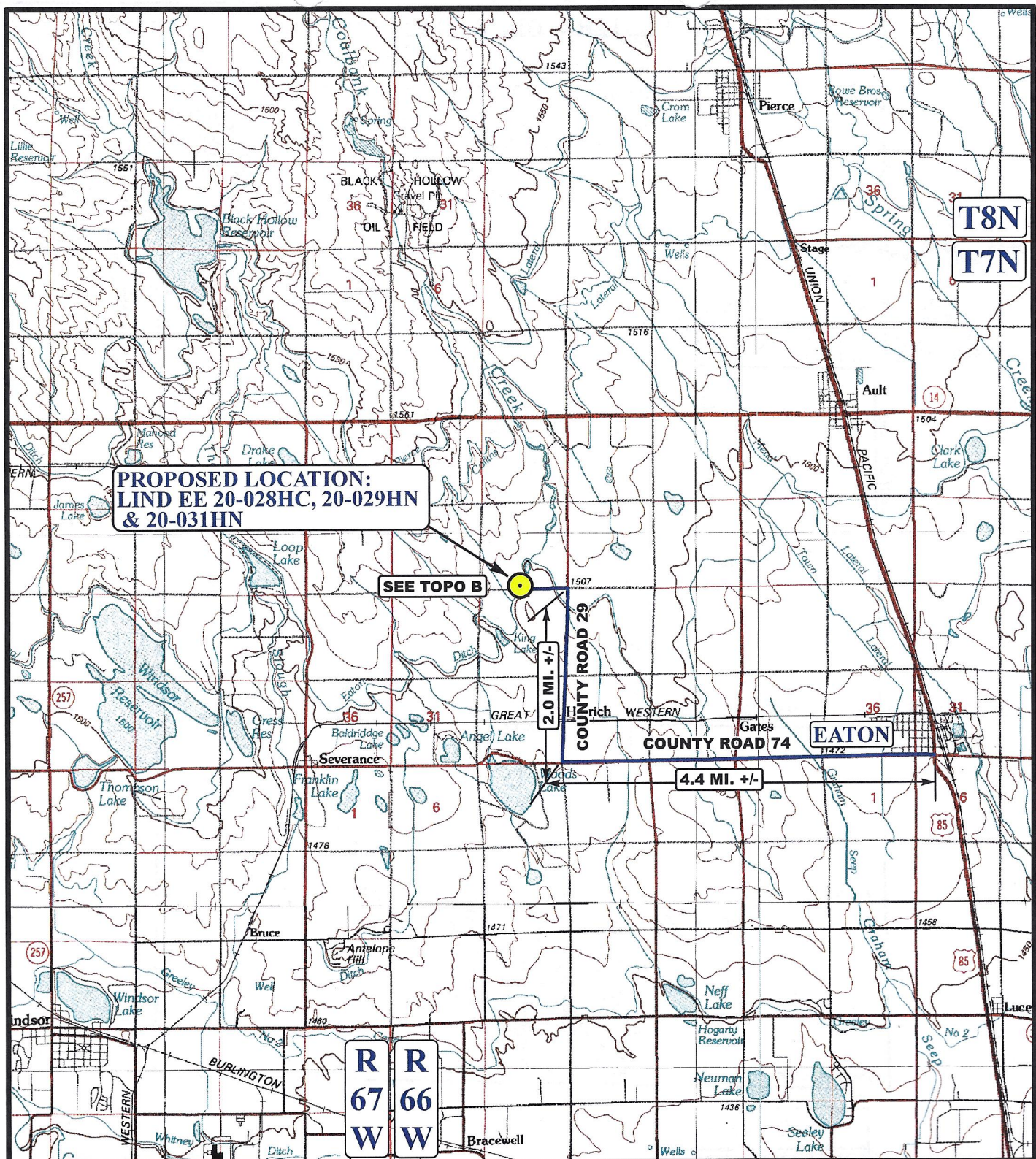
**ACCESS ROAD  
MAP**

**07 31 13**  
 MONTH DAY YEAR

SCALE: 1"=2000' DRAWN BY: J.L.H. REV: 10-16-13 J.L.G.

**B  
TOPO**





**PROPOSED LOCATION:  
LIND EE 20-028HC, 20-029HN  
& 20-031HN**

**SEE TOPO B**

**COUNTY ROAD 29**

**COUNTY ROAD 74**

**EATON**

**4.4 MI. +/-**

**2.0 MI. +/-**

**LEGEND:**

**PROPOSED LOCATION**



**GREAT WESTERN OIL & GAS COMPANY**

**LIND EE 20-028HC, 20-029HN & 20-031HN  
SECTION 20, T7N, R66W, 6th P.M.  
SE 1/4 SW 1/4**



**Uintah Engineering & Land Surveying**  
85 South 200 East Vernal, Utah 84078  
(435) 789-1017 \* FAX (435) 789-1813

**ACCESS ROAD  
MAP**

**07 31 13**  
MONTH DAY YEAR

SCALE: 1:100,000 DRAWN BY: J.L.H. REV: 10-16-13 J.L.G.

