

GREAT WESTERN OIL & GAS COMPANY

TARGET BOTTOM HOLE DRAWING FOR

LIND EE 20-028HC, 20-029HN & 20-031HN
SECTION 20, T7N, R66W, 6th P.M.
SE 1/4 SW 1/4

FIGURE #6



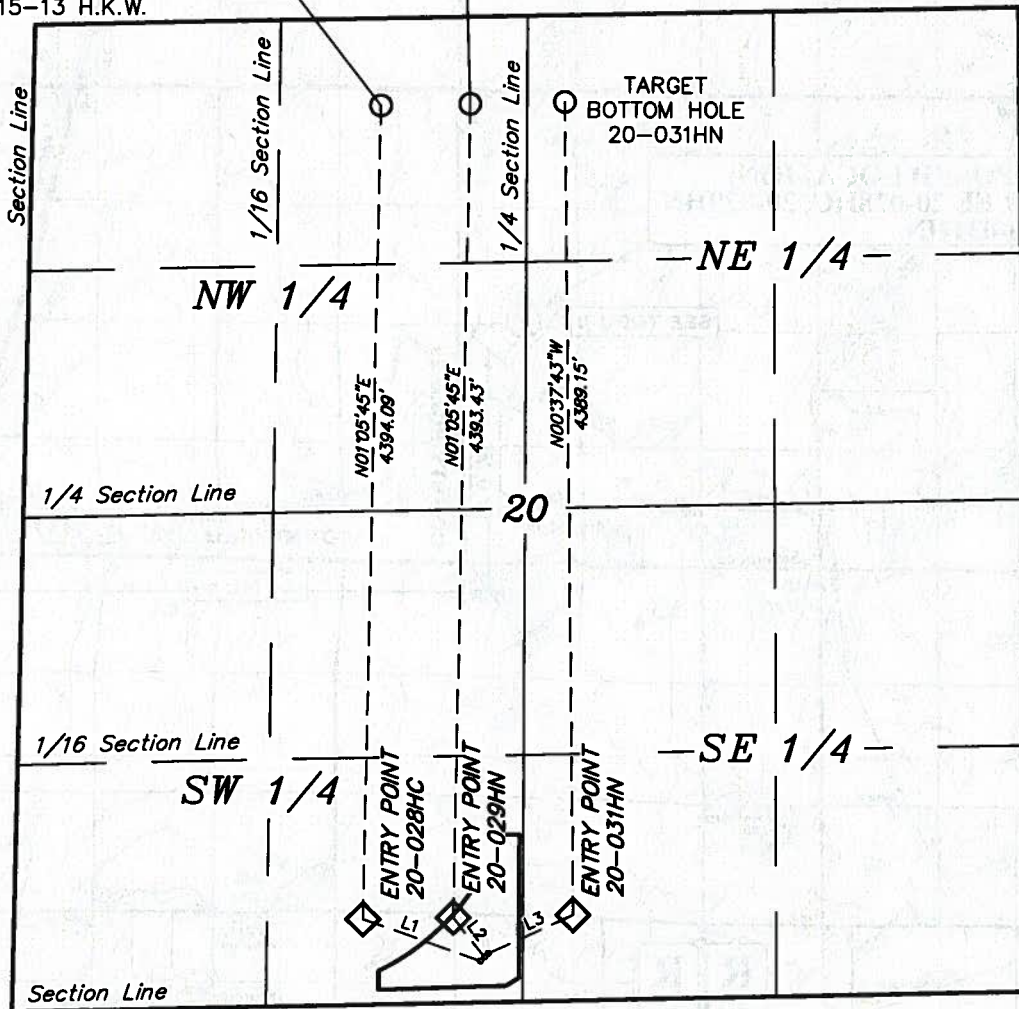
SCALE

DATE: 08-01-13
DRAWN BY: B.D.H.
REV: 09-11-13 J.S.
REV: 10-15-13 H.K.W.

TARGET
BOTTOM HOLE
20-028HC

TARGET
BOTTOM HOLE
20-029HN

TARGET
BOTTOM HOLE
20-031HN



LINE TABLE

LINE	DIRECTION	LENGTH
L1	N70°15'16"W	662.34'
L2	N37°54'43"W	270.74'
L3	N65°24'11"E	497.94'

