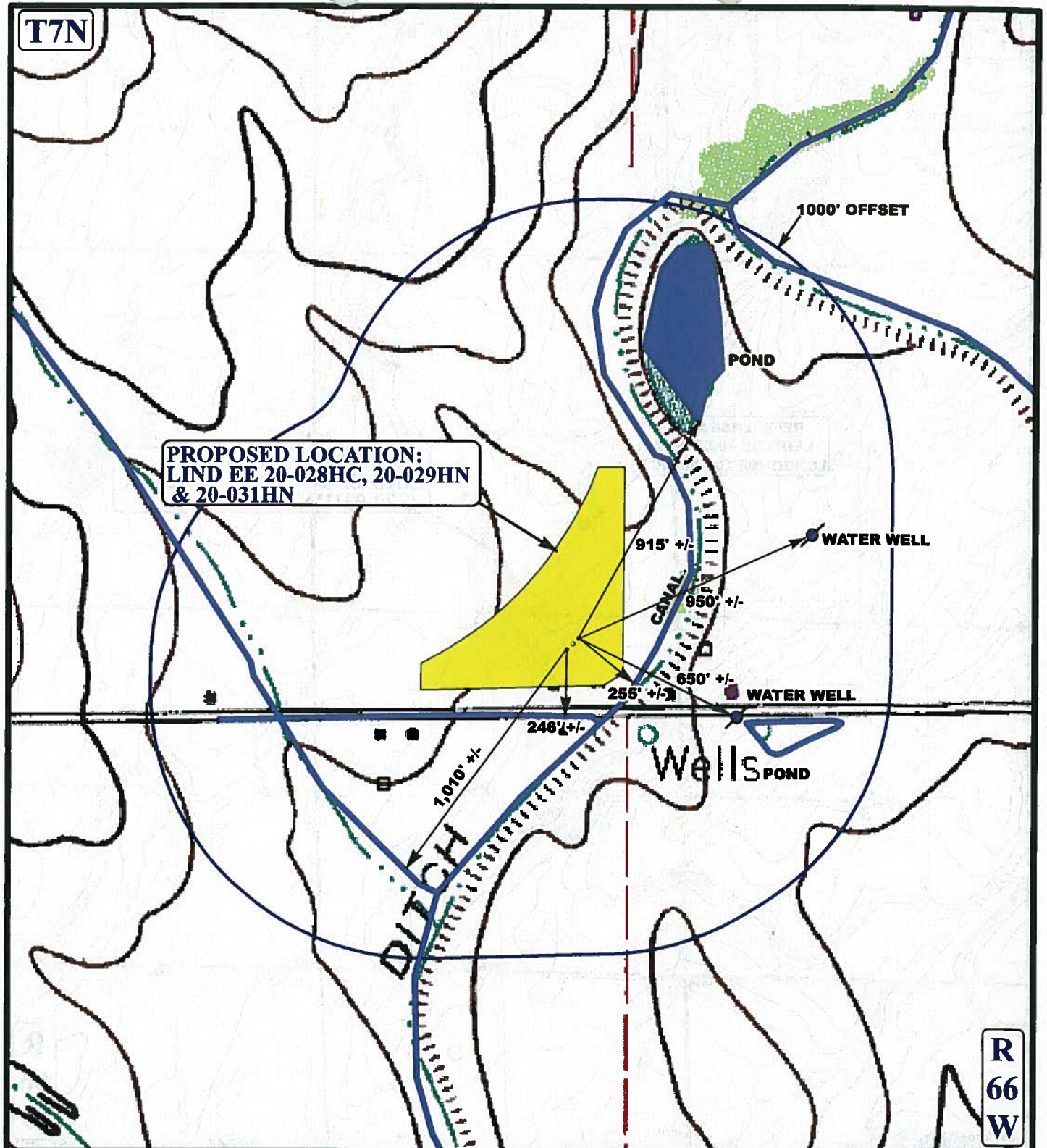


T7N



R  
66  
W

**LEGEND:**

- EXISTING WATER
- 1000' OFFSET BOUNDARY
- WATER WELLS



**GREAT WESTERN OIL & GAS COMPANY**

**LIND EE 20-028HC, 20-029HN & 20-031HN**  
**SECTION 20, T7N, R66W, 6th P.M.**  
**SE 1/4 SW 1/4**



**Uintah Engineering & Land Surveying**  
85 South 200 East Vernal, Utah 84078  
(435) 789-1017 \* FAX (435) 789-1813

**HYDROLOGY**  
**MAP**

**07** **31** **13**  
MONTH DAY YEAR

SCALE: 1"=500' DRAWN BY: J.L.H. REV: 10-16-13 J.L.G.

