

ANADARKO PETROLEUM CORP - EBUS

Howard 26N-28HZ

MAJORS 42

Post Job Summary

Cement Surface Casing

Date Prepared: 7/3/2013
Version: 1

Service Supervisor: SMITH, AARON

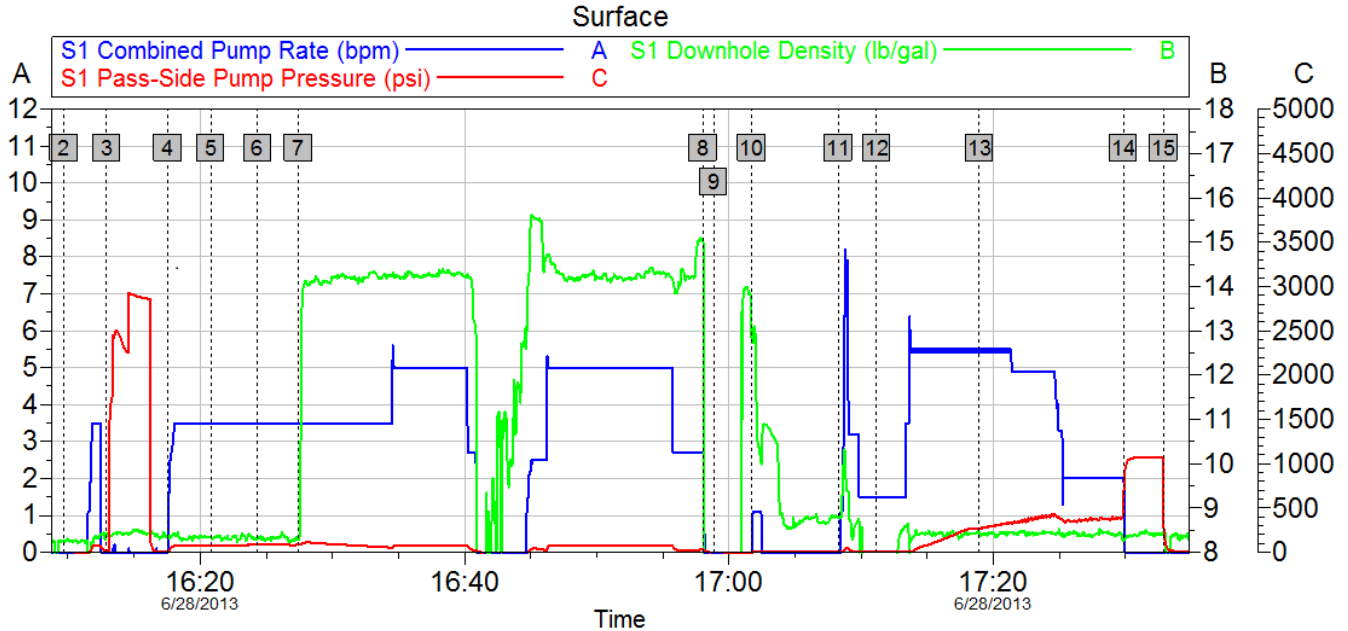
Submitted by: LANSDALE, JUSTIN

Pumping Schedule

Stage /Plug #	Fluid #	Fluid Type	Fluid Name	Surface Density lbm/gal	Avg Rate bbl/min	Surface Volume	Downhole Volume
1	1	Spacer	Fresh Water Spacer	8.33	4.00	10.0 bbl	10.0 bbl
1	2	Spacer	Mud Flush	0.00	4.00	12.0 bbl	12.0 bbl
1	3	Spacer	Fresh Water Spacer	0.00	4.00	10.0 bbl	10.0 bbl
1	4	Cement Slurry	SwiftCem B2	14.20	5.00	386.0 sacks	106.0 bbl

Data Acquisition

Anadarko Howard 26N-28HZ



Global Event Log

2 Start Job	16:09:42	3 Test Lines	16:12:56	4 Pump Spacer 1	16:17:34
5 Pump Spacer 2	16:20:48	6 Pump Spacer 1	16:24:20	7 Pump Cement	16:27:26
8 Shutdown	16:58:02	9 Drop Top Plug	16:58:51	10 Clean Lines	17:01:43
11 Pump Displacement	17:08:17	12 Spacer Returns to Surface	17:11:09	13 Cement Returns to Surface	17:18:56
14 Bump Plug	17:29:50	15 Check Floats	17:32:52		

Customer: Anadarko
Well Description: Howard 26N-28HZ

Job Date: 28-Jun-2013
UWI:

Sales Order #: 900553933
Thanks: Aaron Smith and Crew

OptiCem v6.4.21
28-Jun-13 18:06

HALLIBURTON

Service Supervisor Reports

Job Log

Date/Time	Chart #	Activity Code	Pump Rate	Cum Vol	Pump		Pressure (psig)	Comments
06/28/2013 14:45		Arrive at Location from Service Center						With all equipment and materials.
06/28/2013 14:50		Assessment Of Location Safety Meeting						Hazard hunt performed with crew.
06/28/2013 15:00		Pre-Rig Up Safety Meeting						Covered rig-up JSA
06/28/2013 15:10		Rig-Up Equipment						
06/28/2013 15:30		Rig-Up Completed						
06/28/2013 15:45		Pre-Job Safety Meeting						With customer rep and rig crew.
06/28/2013 16:09		Start Job						
06/28/2013 16:12		Test Lines						@ 2500 Psi.
06/28/2013 16:17		Pump Spacer 1	4	10			70.0	Fresh Water
06/28/2013 16:20		Pump Spacer 2	4	12			70.0	Mud Flush
06/28/2013 16:24		Pump Spacer 1	4	10			70.0	Fresh Water
06/28/2013 16:27		Pump Cement	5	106			70.0	386 Sks, @ 14.2 ppg, 1.54 yield, 7.67 gal/sk
06/28/2013 16:58		Shutdown						
06/28/2013 16:58		Drop Top Plug						Pre-loaded in plug container, verified by customer rep
06/28/2013 17:01		Clean Lines	3	10			50.0	Washed up on Top of Plug First 20 bbls of displacement.
06/28/2013 17:08		Pump Displacement	5	65			300.0	Fresh water
06/28/2013 17:11		Spacer Returns to Surface						@ 13 bbls into displacement, 32 bbls to the pit.
06/28/2013 17:18		Cement Returns to Surface						@ 45 bbls into displacement, 30 bbls to the pit.
06/28/2013 17:29		Bump Plug					1050.0	Final Pressure 389
06/28/2013 17:32		Check Floats						Floats Good. .5 bbls back.
06/28/2013 17:39		End Job						Thanks Aaron Smith and Crew.

The Road to Excellence Starts with Safety

Sold To #: 300466		Ship To #: 3005204		Quote #:		Sales Order #: 900553933	
Customer: ANADARKO PETROLEUM CORP - EBUS				Customer Rep: PORTER, BOB			
Well Name: Howard			Well #: 26N-28HZ		API/UWI #:		
Field: WATTEBERG		City (SAP): DACONO		County/Parish: Weld		State: Colorado	
Contractor: MAJORS			Rig/Platform Name/Num: MAJORS 42				
Job Purpose: Cement Surface Casing							
Well Type: Development Well				Job Type: Cement Surface Casing			
Sales Person: FLING, MATTHEW			Srvc Supervisor: SMITH, AARON			MBU ID Emp #: 518187	

Job Personnel

HES Emp Name	Exp Hrs	Emp #	HES Emp Name	Exp Hrs	Emp #	HES Emp Name	Exp Hrs	Emp #
BOURGEOIS, KEVIN Paul	3.8	459092	SMITH, AARON David	3.8	518187			

Equipment

HES Unit #	Distance-1 way	HES Unit #	Distance-1 way	HES Unit #	Distance-1 way	HES Unit #	Distance-1 way
10988836C	6 mile	11667703C	6 mile	12010173	6 mile		

Job

Formation Name	Formation Depth (MD)	Top	Bottom	Form Type	Job depth MD	Water Depth	Perforation Depth (MD)	From	To
				BHST	1023. ft				
					Job Depth TVD	1033. ft			
					Wk Ht Above Floor	6. ft			

Job Times

Called Out	Date	Time	Time Zone
	28 - Jun - 2013	12:00	MST
On Location	28 - Jun - 2013	14:45	MST
Job Started	28 - Jun - 2013	16:09	MST
Job Completed	28 - Jun - 2013	17:39	MST
Departed Loc	28 - Jun - 2013	18:30	MST

Fluid Data

Stage/Plug #: 1

Fluid #	Stage Type	Fluid Name	Qty	Qty uom	Mixing Density lbm/gal	Yield ft ³ /sk	Mix Fluid Gal/sk	Rate bbl/min	Total Mix Fluid Gal/sk
1	Fresh Water Spacer		10.00	bbl	8.33	.0	.0	.0	
2	Mud Flush		12.00	bbl	.	.0	.0	.0	
	42 gal/bbl	MUD FLUSH III - SBM (528788)							
	24 lbm/bbl	MUD FLUSH III, 40 LB SACK (101633304)							
3	Fresh Water Spacer		10.00	bbl	.	.0	.0	.0	
4	SwiftCem B2	SWIFTCM (TM) SYSTEM (452990)	386.0	sacks	14.2	1.54	7.67		7.67
	0.125 lbm	POLY-E-FLAKE (101216940)							
	7.67 Gal	FRESH WATER							

The Information Stated Herein Is Correct

Customer Representative Signature

