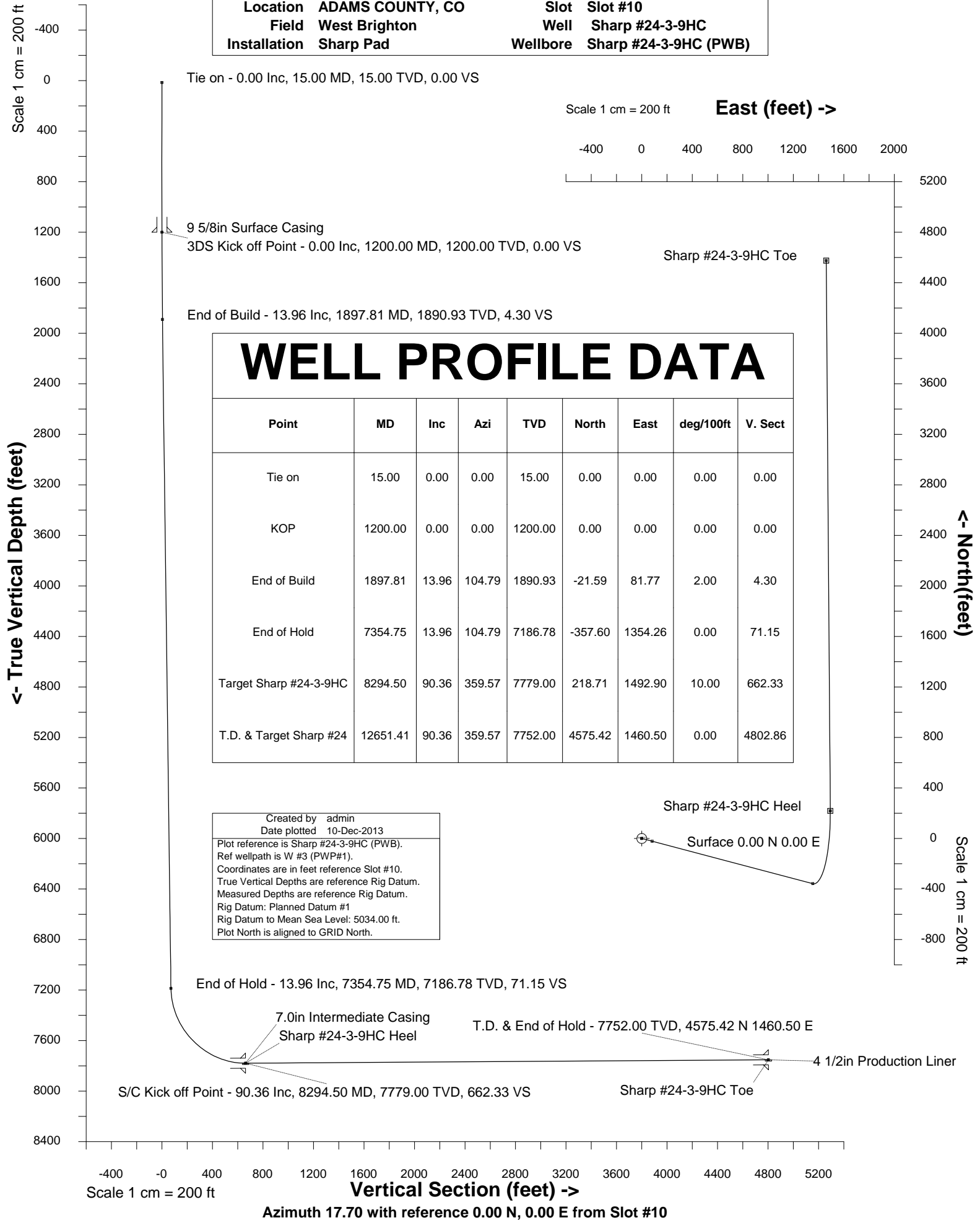


WARD PETROLEUM

Location ADAMS COUNTY, CO	Slot Slot #10
Field West Brighton	Well Sharp #24-3-9HC
Installation Sharp Pad	Wellbore Sharp #24-3-9HC (PWB)



Tie on - 0.00 Inc, 15.00 MD, 15.00 TVD, 0.00 VS

9 5/8in Surface Casing
3DS Kick off Point - 0.00 Inc, 1200.00 MD, 1200.00 TVD, 0.00 VS

Sharp #24-3-9HC Toe

End of Build - 13.96 Inc, 1897.81 MD, 1890.93 TVD, 4.30 VS

WELL PROFILE DATA								
Point	MD	Inc	Azi	TVD	North	East	deg/100ft	V. Sect
Tie on	15.00	0.00	0.00	15.00	0.00	0.00	0.00	0.00
KOP	1200.00	0.00	0.00	1200.00	0.00	0.00	0.00	0.00
End of Build	1897.81	13.96	104.79	1890.93	-21.59	81.77	2.00	4.30
End of Hold	7354.75	13.96	104.79	7186.78	-357.60	1354.26	0.00	71.15
Target Sharp #24-3-9HC	8294.50	90.36	359.57	7779.00	218.71	1492.90	10.00	662.33
T.D. & Target Sharp #24	12651.41	90.36	359.57	7752.00	4575.42	1460.50	0.00	4802.86

Created by admin
Date plotted 10-Dec-2013
Plot reference is Sharp #24-3-9HC (PWB).
Ref wellpath is W #3 (PWP#1).
Coordinates are in feet reference Slot #10.
True Vertical Depths are reference Rig Datum.
Measured Depths are reference Rig Datum.
Rig Datum: Planned Datum #1
Rig Datum to Mean Sea Level: 5034.00 ft.
Plot North is aligned to GRID North.

Sharp #24-3-9HC Heel

Surface 0.00 N 0.00 E

End of Hold - 13.96 Inc, 7354.75 MD, 7186.78 TVD, 71.15 VS

7.0in Intermediate Casing
Sharp #24-3-9HC Heel

T.D. & End of Hold - 7752.00 TVD, 4575.42 N 1460.50 E

S/C Kick off Point - 90.36 Inc, 8294.50 MD, 7779.00 TVD, 662.33 VS

Sharp #24-3-9HC Toe

4 1/2in Production Liner



INTEGRATED PETROLEUM TECHNOLOGIES, INC
 SYSDRILL
 Well Design Combined Report
 Wellbore: Sharp #24-3-9HC (PWB)

Wellhead Details							
Name	Northing	Easting	Latitude	Longitude	North	East	Elevation Above Inst.
Slot #10	1223135.1288	3183430.8382	39.94403000	-104.84578000	14.18S	53.38E	-0.00

Declination			
Date	Source	Time	
27-Nov-2013	IGRF Model [1900.0-2015.0]	14:20	

Site Details				
Name	Northing	Easting	Coord System Name	North Alignment
Sharp Pad	1223149.3063	3183377.4593	CO83-NF on NORTH AMERICAN DATUM 1983 datum	Grid

Summary Wellpath									
MD[ft]	Inc[deg]	Azi[deg]	TVD[ft]	North[ft]	East[ft]	Dogleg [deg/100ft]	Vertical Section[ft]	Northing	Easting
15.00	0.00	0.000	15.00	0.00N	0.00E		0.00	1223135.13	3183430.84
1200.00	0.00	0.000	1200.00	0.00N	0.00E	==>	0.00	1223135.13	3183430.84
1897.81	13.96	104.790	1890.93	21.59S	81.77E	2.00	4.30	1223113.54	3183512.60
7354.75	13.96	104.790	7186.78	357.60S	1354.26E	==>	71.15	1222777.54	3184785.06
8294.50	90.36	359.570	7779.00	218.71N	1492.90E	10.00	662.33	1223353.83	3184923.70
12651.41	90.36	359.570	7752.00	4575.42N	1460.50E	==>	4802.86	1227710.40	3184891.29

Interpolated Wellpath									
MD[ft]	Inc[deg]	Azi[deg]	TVD[ft]	North[ft]	East[ft]	Dogleg [deg/100ft]	Vertical Section[ft]	Northing	Easting
0.00	0.00	0.000	0.00	0.00N	0.00E		0.00	1223135.13	3183430.84
15.00	0.00	0.000	15.00	0.00N	0.00E	==>	0.00	1223135.13	3183430.84
100.00	0.00	0.000	100.00	0.00N	0.00E	==>	0.00	1223135.13	3183430.84
200.00	0.00	0.000	200.00	0.00N	0.00E	==>	0.00	1223135.13	3183430.84
300.00	0.00	0.000	300.00	0.00N	0.00E	==>	0.00	1223135.13	3183430.84
400.00	0.00	0.000	400.00	0.00N	0.00E	==>	0.00	1223135.13	3183430.84
500.00	0.00	0.000	500.00	0.00N	0.00E	==>	0.00	1223135.13	3183430.84
600.00	0.00	0.000	600.00	0.00N	0.00E	==>	0.00	1223135.13	3183430.84
700.00	0.00	0.000	700.00	0.00N	0.00E	==>	0.00	1223135.13	3183430.84
800.00	0.00	0.000	800.00	0.00N	0.00E	==>	0.00	1223135.13	3183430.84
900.00	0.00	0.000	900.00	0.00N	0.00E	==>	0.00	1223135.13	3183430.84
1000.00	0.00	0.000	1000.00	0.00N	0.00E	==>	0.00	1223135.13	3183430.84
1100.00	0.00	0.000	1100.00	0.00N	0.00E	==>	0.00	1223135.13	3183430.84
1185.00	0.00	0.000	1185.00	0.00N	0.00E	==>	0.00	1223135.13	3183430.84
1200.00	0.00	0.000	1200.00	0.00N	0.00E	==>	0.00	1223135.13	3183430.84
1285.00	1.70	104.790	1284.99	0.32S	1.22E	2.00	0.06	1223134.81	3183432.06
1385.00	3.70	104.790	1384.87	1.52S	5.77E	2.00	0.30	1223133.60	3183436.61
1485.00	5.70	104.790	1484.53	3.62S	13.70E	2.00	0.72	1223131.51	3183444.53
1585.00	7.70	104.790	1583.84	6.59S	24.98E	2.00	1.31	1223128.53	3183455.81
1685.00	9.70	104.790	1682.69	10.46S	39.60E	2.00	2.08	1223124.67	3183470.44
1785.00	11.70	104.790	1780.94	15.20S	57.55E	2.00	3.02	1223119.93	3183488.39
1885.00	13.70	104.790	1878.49	20.81S	78.80E	2.00	4.14	1223114.32	3183509.64
1897.81	13.96	104.790	1890.93	21.59S	81.77E	2.00	4.30	1223113.54	3183512.60
1900.00	13.96	104.790	1893.06	21.73S	82.28E	==>	4.32	1223113.40	3183513.11
2000.00	13.96	104.790	1990.10	27.88S	105.59E	==>	5.55	1223107.25	3183536.43
2100.00	13.96	104.790	2087.15	34.04S	128.91E	==>	6.77	1223101.09	3183559.75
2200.00	13.96	104.790	2184.20	40.20S	152.23E	==>	8.00	1223094.93	3183583.07
2300.00	13.96	104.790	2281.25	46.36S	175.55E	==>	9.22	1223088.77	3183606.38
2400.00	13.96	104.790	2378.30	52.51S	198.87E	==>	10.45	1223082.62	3183629.70
2500.00	13.96	104.790	2475.34	58.67S	222.19E	==>	11.67	1223076.46	3183653.02
2600.00	13.96	104.790	2572.39	64.83S	245.51E	==>	12.90	1223070.30	3183676.34
2700.00	13.96	104.790	2669.44	70.99S	268.83E	==>	14.12	1223064.15	3183699.66
2800.00	13.96	104.790	2766.49	77.14S	292.15E	==>	15.35	1223057.99	3183722.97
2900.00	13.96	104.790	2863.54	83.30S	315.46E	==>	16.57	1223051.83	3183746.29
3000.00	13.96	104.790	2960.58	89.46S	338.78E	==>	17.80	1223045.67	3183769.61
3100.00	13.96	104.790	3057.63	95.62S	362.10E	==>	19.02	1223039.52	3183792.93
3200.00	13.96	104.790	3154.68	101.77S	385.42E	==>	20.25	1223033.36	3183816.25
3300.00	13.96	104.790	3251.73	107.93S	408.74E	==>	21.47	1223027.20	3183839.56

All data is in Feet unless otherwise stated
 Coordinates are from Slot MD's are from Rig and TVD's are from Rig (Planned Datum #1 5034.0ft above Mean Sea Level)
 Vertical Section is from 0.00N 0.00E on azimuth 17.700 degrees
 Bottom hole distance is 4802.86 Feet on azimuth 17.70 degrees from Wellhead
 Calculation method uses Minimum Curvature method
 Prepared by Integrated Petroleum Technologies, Inc.
 Date Printed: 10-Dec-2013



INTEGRATED PETROLEUM TECHNOLOGIES, INC
 SYSDRILL
 Well Design Combined Report
 Wellbore: Sharp #24-3-9HC (PWB)

Interpolated Wellpath									
MD[ft]	Inc[deg]	Azi[deg]	TVD[ft]	North[ft]	East[ft]	Dogleg [deg/100ft]	Vertical Section[ft]	Northing	Easting
3400.00	13.96	104.790	3348.78	114.09S	432.06E	==>	22.70	1223021.04	3183862.88
3500.00	13.96	104.790	3445.82	120.25S	455.38E	==>	23.92	1223014.89	3183886.20
3600.00	13.96	104.790	3542.87	126.40S	478.70E	==>	25.15	1223008.73	3183909.52
3700.00	13.96	104.790	3639.92	132.56S	502.01E	==>	26.37	1223002.57	3183932.84
3800.00	13.96	104.790	3736.97	138.72S	525.33E	==>	27.60	1222996.42	3183956.16
3900.00	13.96	104.790	3834.02	144.88S	548.65E	==>	28.82	1222990.26	3183979.47
4000.00	13.96	104.790	3931.06	151.03S	571.97E	==>	30.05	1222984.10	3184002.79
4100.00	13.96	104.790	4028.11	157.19S	595.29E	==>	31.28	1222977.94	3184026.11
4200.00	13.96	104.790	4125.16	163.35S	618.61E	==>	32.50	1222971.79	3184049.43
4300.00	13.96	104.790	4222.21	169.51S	641.93E	==>	33.73	1222965.63	3184072.75
4400.00	13.96	104.790	4319.26	175.66S	665.25E	==>	34.95	1222959.47	3184096.06
4500.00	13.96	104.790	4416.30	181.82S	688.57E	==>	36.18	1222953.31	3184119.38
4600.00	13.96	104.790	4513.35	187.98S	711.88E	==>	37.40	1222947.16	3184142.70
4700.00	13.96	104.790	4610.40	194.14S	735.20E	==>	38.63	1222941.00	3184166.02
4800.00	13.96	104.790	4707.45	200.29S	758.52E	==>	39.85	1222934.84	3184189.34
4900.00	13.96	104.790	4804.50	206.45S	781.84E	==>	41.08	1222928.69	3184212.65
5000.00	13.96	104.790	4901.54	212.61S	805.16E	==>	42.30	1222922.53	3184235.97
5100.00	13.96	104.790	4998.59	218.77S	828.48E	==>	43.53	1222916.37	3184259.29
5200.00	13.96	104.790	5095.64	224.92S	851.80E	==>	44.75	1222910.21	3184282.61
5300.00	13.96	104.790	5192.69	231.08S	875.12E	==>	45.98	1222904.06	3184305.93
5400.00	13.96	104.790	5289.74	237.24S	898.43E	==>	47.20	1222897.90	3184329.25
5500.00	13.96	104.790	5386.78	243.40S	921.75E	==>	48.43	1222891.74	3184352.56
5600.00	13.96	104.790	5483.83	249.55S	945.07E	==>	49.65	1222885.58	3184375.88
5700.00	13.96	104.790	5580.88	255.71S	968.39E	==>	50.88	1222879.43	3184399.20
5800.00	13.96	104.790	5677.93	261.87S	991.71E	==>	52.10	1222873.27	3184422.52
5900.00	13.96	104.790	5774.98	268.03S	1015.03E	==>	53.33	1222867.11	3184445.84
6000.00	13.96	104.790	5872.02	274.18S	1038.35E	==>	54.55	1222860.95	3184469.15
6100.00	13.96	104.790	5969.07	280.34S	1061.67E	==>	55.78	1222854.80	3184492.47
6200.00	13.96	104.790	6066.12	286.50S	1084.99E	==>	57.00	1222848.64	3184515.79
6300.00	13.96	104.790	6163.17	292.66S	1108.30E	==>	58.23	1222842.48	3184539.11
6400.00	13.96	104.790	6260.22	298.81S	1131.62E	==>	59.45	1222836.33	3184562.43
6500.00	13.96	104.790	6357.26	304.97S	1154.94E	==>	60.68	1222830.17	3184585.74
6600.00	13.96	104.790	6454.31	311.13S	1178.26E	==>	61.90	1222824.01	3184609.06
6700.00	13.96	104.790	6551.36	317.28S	1201.58E	==>	63.13	1222817.85	3184632.38
6800.00	13.96	104.790	6648.41	323.44S	1224.90E	==>	64.35	1222811.70	3184655.70
6900.00	13.96	104.790	6745.46	329.60S	1248.22E	==>	65.58	1222805.54	3184679.02
7000.00	13.96	104.790	6842.50	335.76S	1271.54E	==>	66.80	1222799.38	3184702.33
7100.00	13.96	104.790	6939.55	341.91S	1294.85E	==>	68.03	1222793.22	3184725.65
7200.00	13.96	104.790	7036.60	348.07S	1318.17E	==>	69.25	1222787.07	3184748.97
7300.00	13.96	104.790	7133.65	354.23S	1341.49E	==>	70.48	1222780.91	3184772.29
7354.75	13.96	104.790	7186.78	357.60S	1354.26E	==>	71.15	1222777.54	3184785.06
7400.00	13.52	85.740	7230.76	358.60S	1364.82E	10.00	73.41	1222776.54	3184795.61
7500.00	17.29	50.080	7327.36	348.17S	1387.93E	10.00	90.37	1222786.97	3184818.72
7600.00	24.72	31.060	7420.76	320.65S	1410.17E	10.00	123.35	1222814.49	3184840.97
7700.00	33.46	20.940	7508.11	276.88S	1430.87E	10.00	171.34	1222858.26	3184861.66
7800.00	42.71	14.720	7586.76	218.18S	1449.39E	10.00	232.89	1222916.95	3184880.18
7900.00	52.19	10.390	7654.33	146.35S	1465.17E	10.00	306.12	1222988.78	3184895.96
8000.00	61.79	7.050	7708.76	63.56S	1477.73E	10.00	388.81	1223071.57	3184908.53
8100.00	71.46	4.270	7748.39	27.68N	1486.70E	10.00	478.45	1223162.80	3184917.49
8200.00	81.17	1.800	7772.02	124.58N	1491.79E	10.00	572.32	1223259.70	3184922.58
8294.50	90.36	359.570	7779.00	218.71N	1492.90E	10.00	662.33	1223353.83	3184923.70
8300.00	90.36	359.570	7778.97	224.21N	1492.86E	==>	667.55	1223359.33	3184923.66
8400.00	90.36	359.570	7778.35	324.20N	1492.12E	==>	762.59	1223459.32	3184922.91
8500.00	90.36	359.570	7777.73	424.20N	1491.38E	==>	857.62	1223559.31	3184922.17
8600.00	90.36	359.570	7777.11	524.19N	1490.63E	==>	952.65	1223659.30	3184921.42
8700.00	90.36	359.570	7776.49	624.19N	1489.89E	==>	1047.69	1223759.30	3184920.68
8800.00	90.36	359.570	7775.87	724.18N	1489.15E	==>	1142.72	1223859.29	3184919.94
8900.00	90.36	359.570	7775.25	824.18N	1488.40E	==>	1237.75	1223959.28	3184919.19
9000.00	90.36	359.570	7774.63	924.17N	1487.66E	==>	1332.79	1224059.27	3184918.45
9100.00	90.36	359.570	7774.01	1024.17N	1486.91E	==>	1427.82	1224159.27	3184917.71
9200.00	90.36	359.570	7773.39	1124.16N	1486.17E	==>	1522.86	1224259.26	3184916.96

All data is in Feet unless otherwise stated
 Coordinates are from Slot MD's are from Rig and TVD's are from Rig (Planned Datum #1 5034.0ft above Mean Sea Level)
 Vertical Section is from 0.00N 0.00E on azimuth 17.700 degrees
 Bottom hole distance is 4802.86 Feet on azimuth 17.70 degrees from Wellhead
 Calculation method uses Minimum Curvature method
 Prepared by Integrated Petroleum Technologies, Inc.
 Date Printed: 10-Dec-2013



INTEGRATED PETROLEUM TECHNOLOGIES, INC
 SYSDRILL
 Well Design Combined Report
 Wellbore: Sharp #24-3-9HC (PWB)

Interpolated Wellpath									
MD[ft]	Inc[deg]	Azi[deg]	TVD[ft]	North[ft]	East[ft]	Dogleg [deg/100ft]	Vertical Section[ft]	Northing	Easting
9300.00	90.36	359.570	7772.77	1224.16N	1485.43E	==>	1617.89	1224359.25	3184916.22
9400.00	90.36	359.570	7772.15	1324.15N	1484.68E	==>	1712.92	1224459.24	3184915.47
9500.00	90.36	359.570	7771.53	1424.15N	1483.94E	==>	1807.96	1224559.23	3184914.73
9600.00	90.36	359.570	7770.91	1524.15N	1483.20E	==>	1902.99	1224659.23	3184913.99
9700.00	90.36	359.570	7770.29	1624.14N	1482.45E	==>	1998.02	1224759.22	3184913.24
9800.00	90.36	359.570	7769.67	1724.14N	1481.71E	==>	2093.06	1224859.21	3184912.50
9900.00	90.36	359.570	7769.05	1824.13N	1480.96E	==>	2188.09	1224959.20	3184911.76
10000.00	90.36	359.570	7768.43	1924.13N	1480.22E	==>	2283.13	1225059.20	3184911.01
10100.00	90.36	359.570	7767.81	2024.12N	1479.48E	==>	2378.16	1225159.19	3184910.27
10200.00	90.36	359.570	7767.19	2124.12N	1478.73E	==>	2473.19	1225259.18	3184909.53
10300.00	90.36	359.570	7766.57	2224.11N	1477.99E	==>	2568.23	1225359.17	3184908.78
10400.00	90.36	359.570	7765.95	2324.11N	1477.24E	==>	2663.26	1225459.16	3184908.04
10500.00	90.36	359.570	7765.33	2424.10N	1476.50E	==>	2758.29	1225559.16	3184907.29
10600.00	90.36	359.570	7764.71	2524.10N	1475.76E	==>	2853.33	1225659.15	3184906.55
10700.00	90.36	359.570	7764.09	2624.09N	1475.01E	==>	2948.36	1225759.14	3184905.81
10800.00	90.36	359.570	7763.47	2724.09N	1474.27E	==>	3043.40	1225859.13	3184905.06
10900.00	90.36	359.570	7762.85	2824.08N	1473.53E	==>	3138.43	1225959.13	3184904.32
11000.00	90.36	359.570	7762.23	2924.08N	1472.78E	==>	3233.46	1226059.12	3184903.58
11100.00	90.36	359.570	7761.61	3024.07N	1472.04E	==>	3328.50	1226159.11	3184902.83
11200.00	90.36	359.570	7760.99	3124.07N	1471.29E	==>	3423.53	1226259.10	3184902.09
11300.00	90.36	359.570	7760.37	3224.07N	1470.55E	==>	3518.56	1226359.09	3184901.34
11400.00	90.36	359.570	7759.76	3324.06N	1469.81E	==>	3613.60	1226459.09	3184900.60
11500.00	90.36	359.570	7759.14	3424.06N	1469.06E	==>	3708.63	1226559.08	3184899.86
11600.00	90.36	359.570	7758.52	3524.05N	1468.32E	==>	3803.67	1226659.07	3184899.11
11700.00	90.36	359.570	7757.90	3624.05N	1467.58E	==>	3898.70	1226759.06	3184898.37
11800.00	90.36	359.570	7757.28	3724.04N	1466.83E	==>	3993.73	1226859.06	3184897.63
11900.00	90.36	359.570	7756.66	3824.04N	1466.09E	==>	4088.77	1226959.05	3184896.88
12000.00	90.36	359.570	7756.04	3924.03N	1465.34E	==>	4183.80	1227059.04	3184896.14
12100.00	90.36	359.570	7755.42	4024.03N	1464.60E	==>	4278.83	1227159.03	3184895.39
12200.00	90.36	359.570	7754.80	4124.02N	1463.86E	==>	4373.87	1227259.02	3184894.65
12300.00	90.36	359.570	7754.18	4224.02N	1463.11E	==>	4468.90	1227359.02	3184893.91
12400.00	90.36	359.570	7753.56	4324.01N	1462.37E	==>	4563.93	1227459.01	3184893.16
12500.00	90.36	359.570	7752.94	4424.01N	1461.63E	==>	4658.97	1227559.00	3184892.42
12600.00	90.36	359.570	7752.32	4524.00N	1460.88E	==>	4754.00	1227658.99	3184891.68
12651.41	90.36	359.570	7752.00	4575.42N	1460.50E	==>	4802.86	1227710.40	3184891.29

All data is in Feet unless otherwise stated
 Coordinates are from Slot MD's are from Rig and TVD's are from Rig (Planned Datum #1 5034.0ft above Mean Sea Level)
 Vertical Section is from 0.00N 0.00E on azimuth 17.700 degrees
 Bottom hole distance is 4802.86 Feet on azimuth 17.70 degrees from Wellhead
 Calculation method uses Minimum Curvature method
 Prepared by Integrated Petroleum Technologies, Inc.
 Date Printed: 10-Dec-2013



INTEGRATED PETROLEUM TECHNOLOGIES, INC
 SYSDRILL
 Well Design Combined Report
 Wellbore: Sharp #24-3-9HC (PWB)

Hole Sections								
Diameter [in]	Start MD[ft]	Start TVD[ft]	Start North[ft]	Start East[ft]	End MD[ft]	End TVD[ft]	End North[ft]	End East[ft]
13 1/2	15.00	15.00	0.00N	0.00E	1200.00	1200.00	0.00N	0.00E
8 3/4	1200.00	1200.00	0.00N	0.00E	8294.00	7779.00	218.21N	1492.91E
6 1/8	8294.00	7779.00	218.21N	1492.91E	12651.41	7752.00	4575.42N	1460.50E

Casings								
Name	Top MD[ft]	Top TVD[ft]	Top North[ft]	Top East[ft]	Shoe MD[ft]	Shoe TVD[ft]	Shoe North[ft]	Shoe East[ft]
9 5/8in Surface Casing	15.00	15.00	0.00N	0.00E	1200.00	1200.00	0.00N	0.00E
7.0in Intermediate Casing	15.00	15.00	0.00N	0.00E	8294.00	7779.00	218.21N	1492.91E
4 1/2in Production Liner	7400.00	7230.76	358.60S	1364.82E	12651.41	7752.00	4575.42N	1460.50E

Targets								
Name	North[ft]	East[ft]	TVD[ft]	Latitude	Longitude	Northing	Easting	Last Revised
Sharp #24-3-9HC Heel	218.71N	1492.90E	7779.00	39.94460000	-104.84045000	1223353.83	3184923.70	27-Nov-2013
Sharp #24-3-9HC Toe	4575.42N	1460.50E	7752.00	39.95656000	-104.84045000	1227710.40	3184891.29	27-Nov-2013

Survey Tool Program						
Reference	Survey Name	MD[ft]	TVD[ft]	Survey Tool	Error Model	
141517	Planned	12651.41	7752.00	WdW Rate Gyro	Standard	

Notes

All data is in Feet unless otherwise stated
 Coordinates are from Slot MD's are from Rig and TVD's are from Rig (Planned Datum #1 5034.0ft above Mean Sea Level)
 Vertical Section is from 0.00N 0.00E on azimuth 17.700 degrees
 Bottom hole distance is 4802.86 Feet on azimuth 17.70 degrees from Wellhead
 Calculation method uses Minimum Curvature method
 Prepared by Integrated Petroleum Technologies, Inc.
 Date Printed: 10-Dec-2013



SYSDRILL
Closest Approach + Clearance Factor Summary Report
Wellbore: Sharp #24-3-9HC (PWB)

Ellipse separations are reported ONLY if BOTH wells have uncertainty data
Only Depth and Magnetic Reference Field error terms are correlated across tie points
Proximities beyond 5000.00ft with expansion rate of 0.00ft/1000ft are not reported
Scan limit is calculated on CENTRE to CENTRE distance

Summary data uses Closest Approach clearance calculation for all minima
Hole size/Casings ARE included
Hole size/Casings are NOT subtracted from Centre-Centre distance
Confidence limit of 95.00% / 2.80 SD.

Wellbore			
Name	Created	Last Revised	
Sharp #24-3-9HC (PWB)	5-Dec-2013	10-Dec-2013	

Well		
Name	Government ID	Last Revised
Sharp #24-3-9HC		10-Dec-2013

Slot						
Name	Grid Northing	Grid Easting	Latitude	Longitude	North	East
Slot #10	1223135.1288	3183430.8382	39.94403000	-104.84578000	14.18S	53.38E

Installation				
Name	Easting	Northing	Coord System Name	North Alignment
Sharp Pad	3183377.4593	1223149.3063	CO83-NF on NORTH AMERICAN DATUM 1983 datum	Grid

Field				
Name	Easting	Northing	Coord System Name	North Alignment
West Brighton	3178196.4983	1231661.3262	CO83-NF on NORTH AMERICAN DATUM 1983 datum	Grid

Clearance Summary										
Offset WellName	Offset Wellbore	Offset Slot	Offset Structure	Separation [ft]	MD[ft]	Diverging From[ft]	Ellipse Separation [ft]	Ellipse MD[ft]	Clearance Factor	Clearance MD[ft]
W #9	W #9 (PWB)	Slot #9	Sharp Pad	14.02	1200.00	12651.41	11.15	1200.00	4.88	1200.00
W #4	W #4 (PWB)	Slot #4	Sharp Pad	16.80	1212.51	7607.84	13.95	1200.00	3.10	7577.34
W #3	W #3 (PWB)	Slot #3	Sharp Pad	26.75	1200.00	7686.91	23.88	1200.00	9.31	1200.00
Sharp #24-3-11HC	Sharp #24-3-11HC (PWB)	Slot #8	Sharp Pad	30.84	1200.00	12651.41	27.97	1200.00	10.56	12651.41
W #2	W #2 (PWB)	Slot #2	Sharp Pad	39.26	1200.00	1200.00	36.38	1200.00	13.67	1200.00
W #7	W #7 (PWB)	Slot #7	Sharp Pad	44.86	1200.00	12651.41	41.99	1200.00	15.62	1200.00
W #1	W #1 (PWB)	Slot #1	Sharp Pad	55.19	1212.51	1212.51	52.36	1200.00	19.23	1200.00
W #6	W #6 (PWB)	Slot #6	Sharp Pad	58.88	1200.00	1200.00	56.01	1200.00	20.50	1200.00
W #5	W #5 (PWB)	Slot #5	Sharp Pad	75.71	1200.00	1200.00	72.83	1200.00	26.36	1200.00
W Adams Aggregate 1	W Adams Aggregate 1 (AWB)	Adams Aggregate 1	Offsets	2269.56	1200.00	8515.00	2259.97	1200.00	147.45	5247.94
W Letterly-Scott 1	W Letterly-Scott 1 (AWB)	Letterly-Scott 1	Offsets	2384.68	11579.96	11579.96	2326.64	11612.77	37.62	12367.36
W Rocky Mountain II 1	W Rocky Mountain II 1 (AWB)	Rocky Mountain II 1	Offsets	4424.06	12485.45	12485.45	4375.96	12498.60	90.76	12651.41
W Goetz 2	W Goetz 2 (AWB)	Goetz 2	Offsets	4589.90	1200.00	1200.00	4580.34	1200.00	308.51	3315.00
W Goetz 3-23	W Goetz 3-23 (AWB)	Goetz 3-23	Offsets	4679.61	1200.00	1200.00	4670.08	1200.00	319.29	3049.78

All data is in Feet unless otherwise stated
Coordinates are from Slot MD's are from Rig and TVD's are from Rig (Planned Datum #1 5034.0ft above Mean Sea Level)
Vertical Section is from 0.00N 0.00E on azimuth 17.700 degrees
Prepared by Integrated Petroleum Technologies, Inc.
Date Printed: 10-Dec-2013



SYSDRILL
 Closest Approach + Clearance Factor Summary Report
 Wellbore: Sharp #24-3-9HC (PWB)

Clearance Summary										
Offset WellName	Offset Wellbore	Offset Slot	Offset Structure	Separation [ft]	MD[ft]	Diverging From[ft]	Ellipse Separation [ft]	Ellipse MD[ft]	Clearance Factor	Clearance MD[ft]
W Huebner 25-44	W Huebner 25-44 (AWB)	Huebner 25-44	Offsets	4809.80	7462.51	7462.51	4773.59	7462.51	128.68	7971.04
W Van Scoyk 1	W Van Scoyk 1 (AWB)	Van Scoyk 1	Offsets	4901.05	1200.00	1200.00	4891.49	1200.00	409.36	2016.31
W Nauman-Greenhalgh 1	W Nauman-Greenhalgh 1 (AWB)	Nauman-Greenhalgh 1	Offsets	4975.37	12651.41	12651.41	4922.71	12651.41	94.47	12651.41