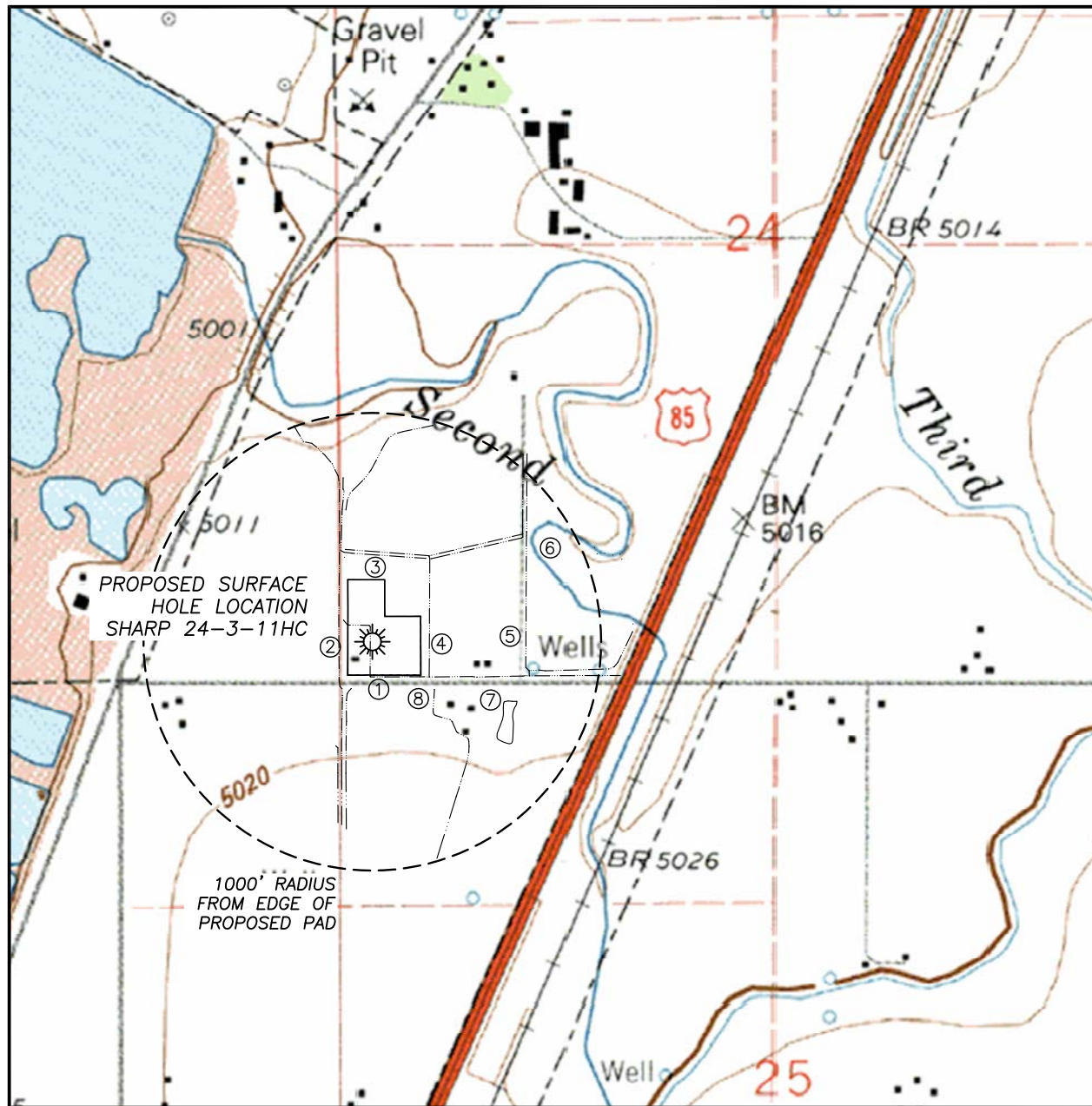


HYDROLOGY MAP SHARP 24-3-11HC

SECTION 24, TOWNSHIP 1 SOUTH, RANGE 67 WEST OF THE 6TH PRINCIPAL MERIDIAN



SURFACE WATER

1. IRR. DITCH: 13'± W
211'± S
2. IRR. DITCH: 200'± W
3. IRR. DITCH: 522'± N
4. IRR. DITCH: 342'± E
5. IRR. DITCH: 920'± E
6. CREEK: 1155'± NE
7. POND: 868'± SE
8. IRR. DITCH: 469'± SE

