

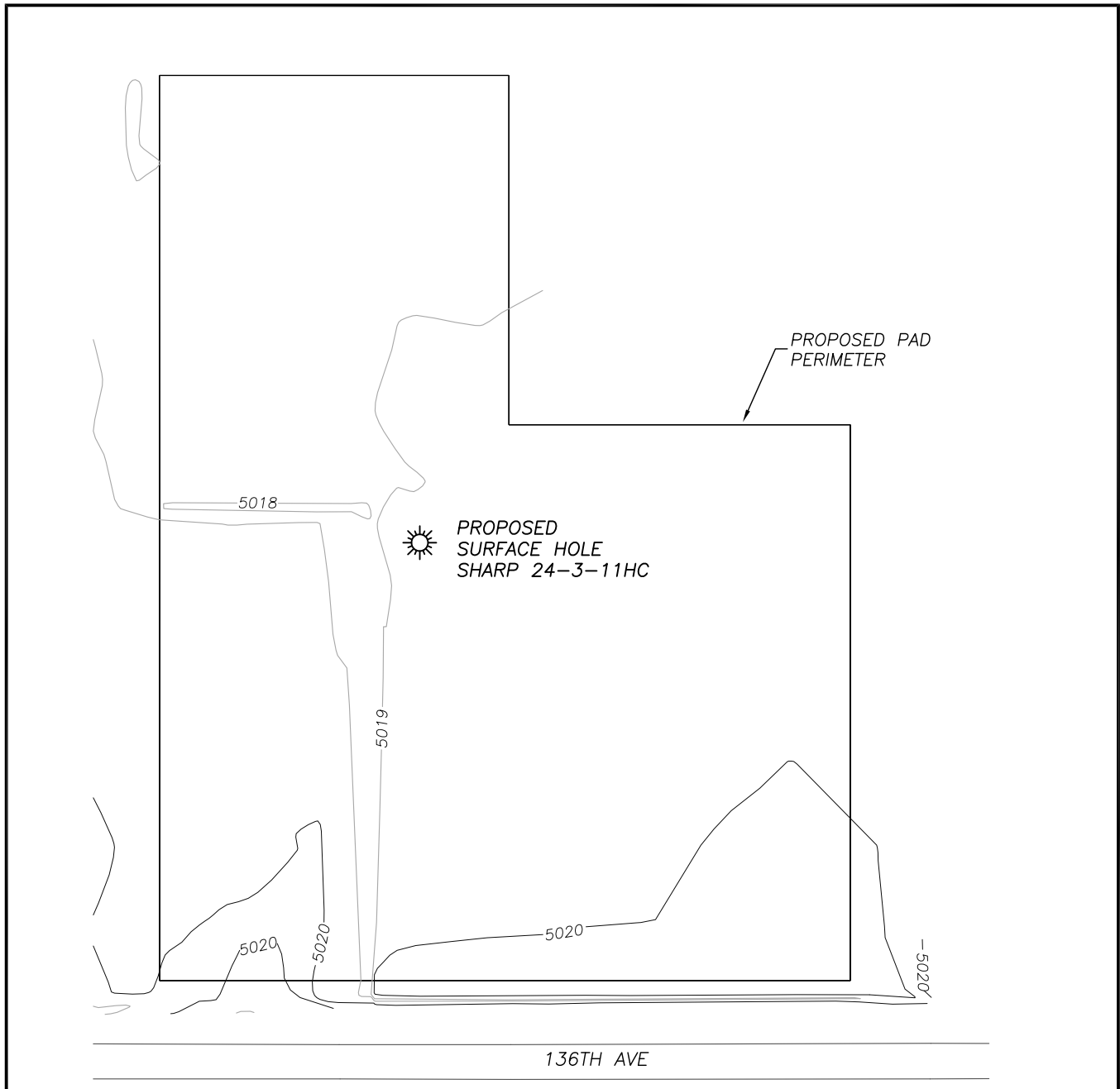
DALEY LAND SURVEYING, INC.

PARKER, CO. 80134

303 953 9841

## EXISTING CONTOURS SHARP 24-3-11HC

SECTION 24, TOWNSHIP 1 SOUTH, RANGE 67 WEST OF THE 6TH PRINCIPAL MERIDIAN

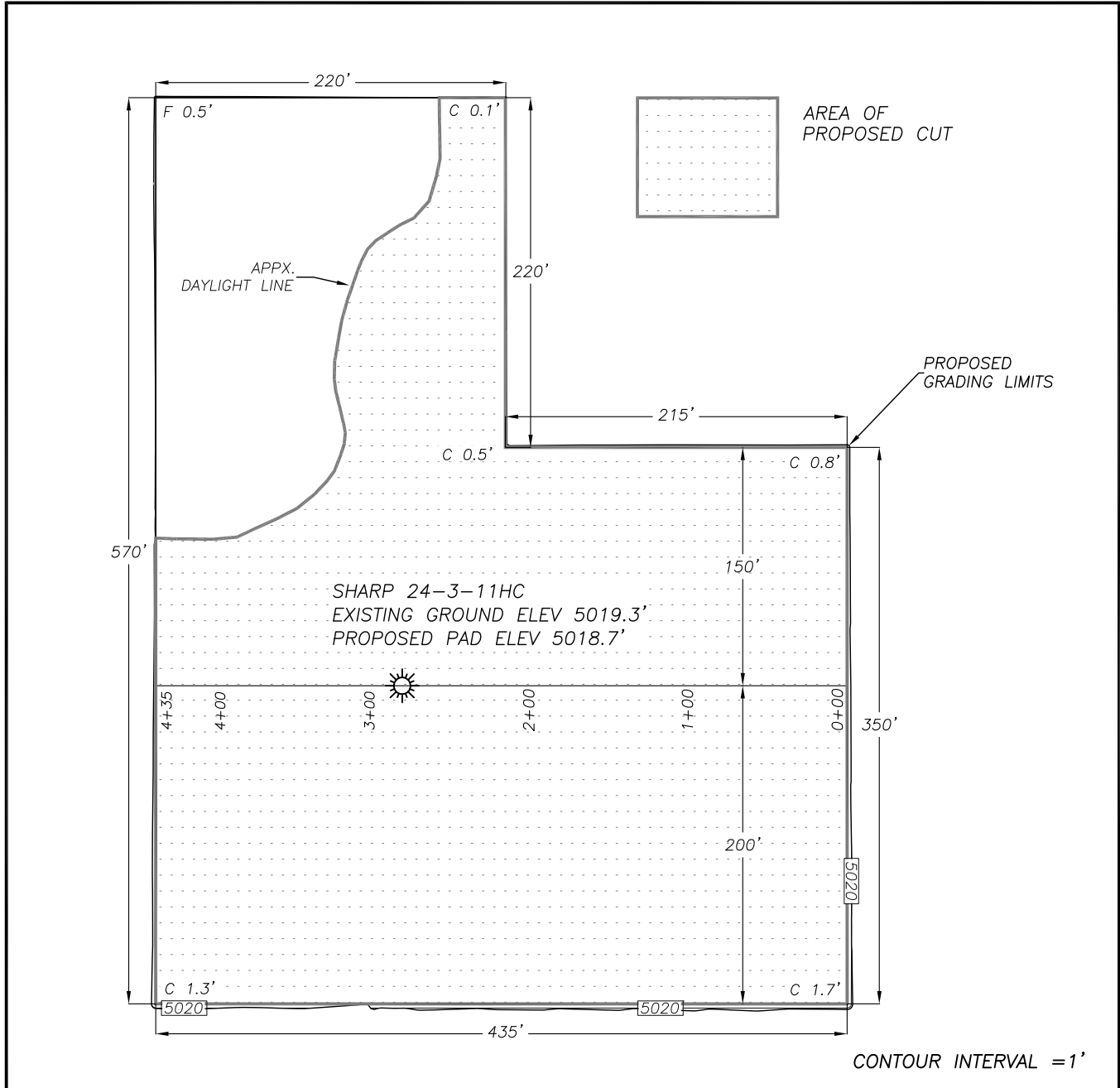


0 100  
SCALE: 1" = 100'

# PROPOSED PAD CONTOURS

## SHARP 24-3-11HC

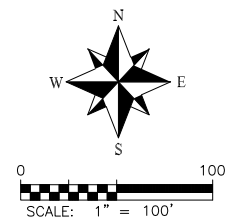
SECTION 24, TOWNSHIP 1 SOUTH, RANGE 67 WEST OF THE 6TH PRINCIPAL MERIDIAN



### SHARP 24-3-11HC

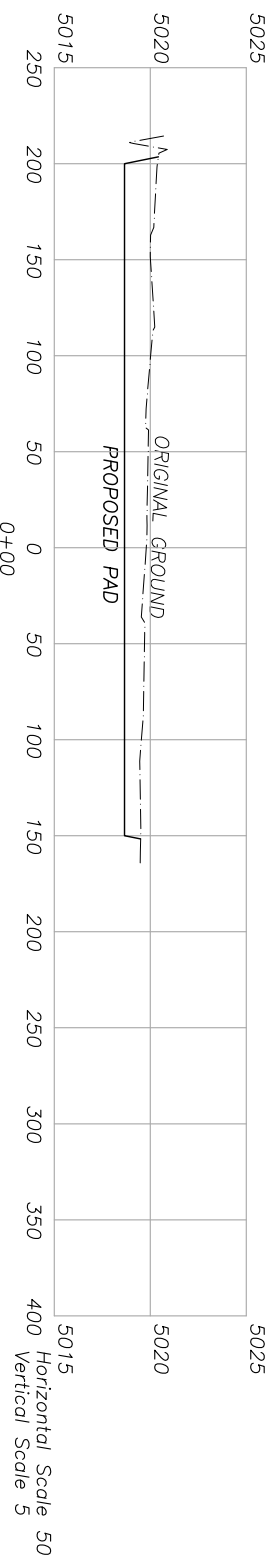
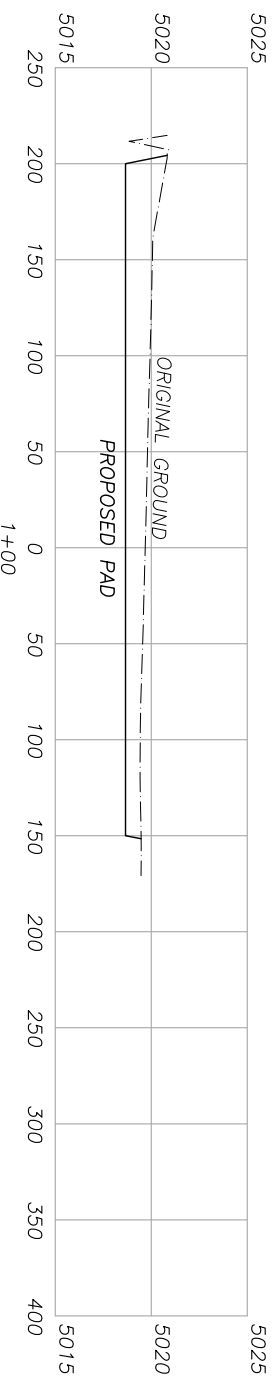
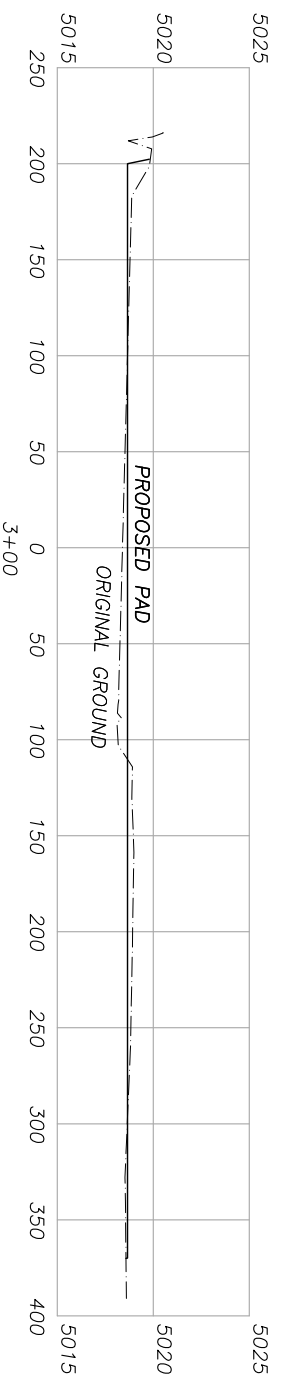
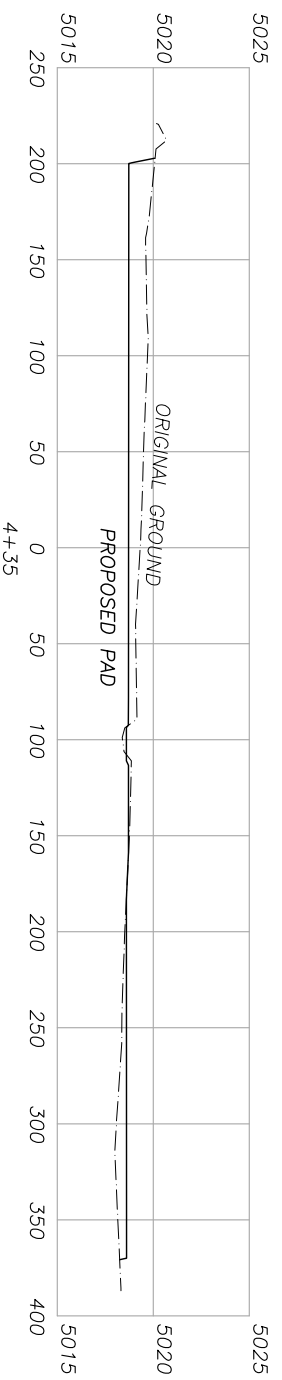
Top of pad elevation: 5018.7'  
Cut slope ratio: 2.0  
Fill slope ratio: 2.0  
Cut Swell Factor: 1.00  
Fill Shrink Factor: 1.00

Pad Earthwork Volumes:  
Total cut: 5353± C.Y.  
Total fill: 253± C.Y.  
Balance Export: 5100± C.Y. (8" Topsoil)  
Area: 4.6 Acres



# PROPOSED CROSS SECTIONS - SHARP 24-3-11HC

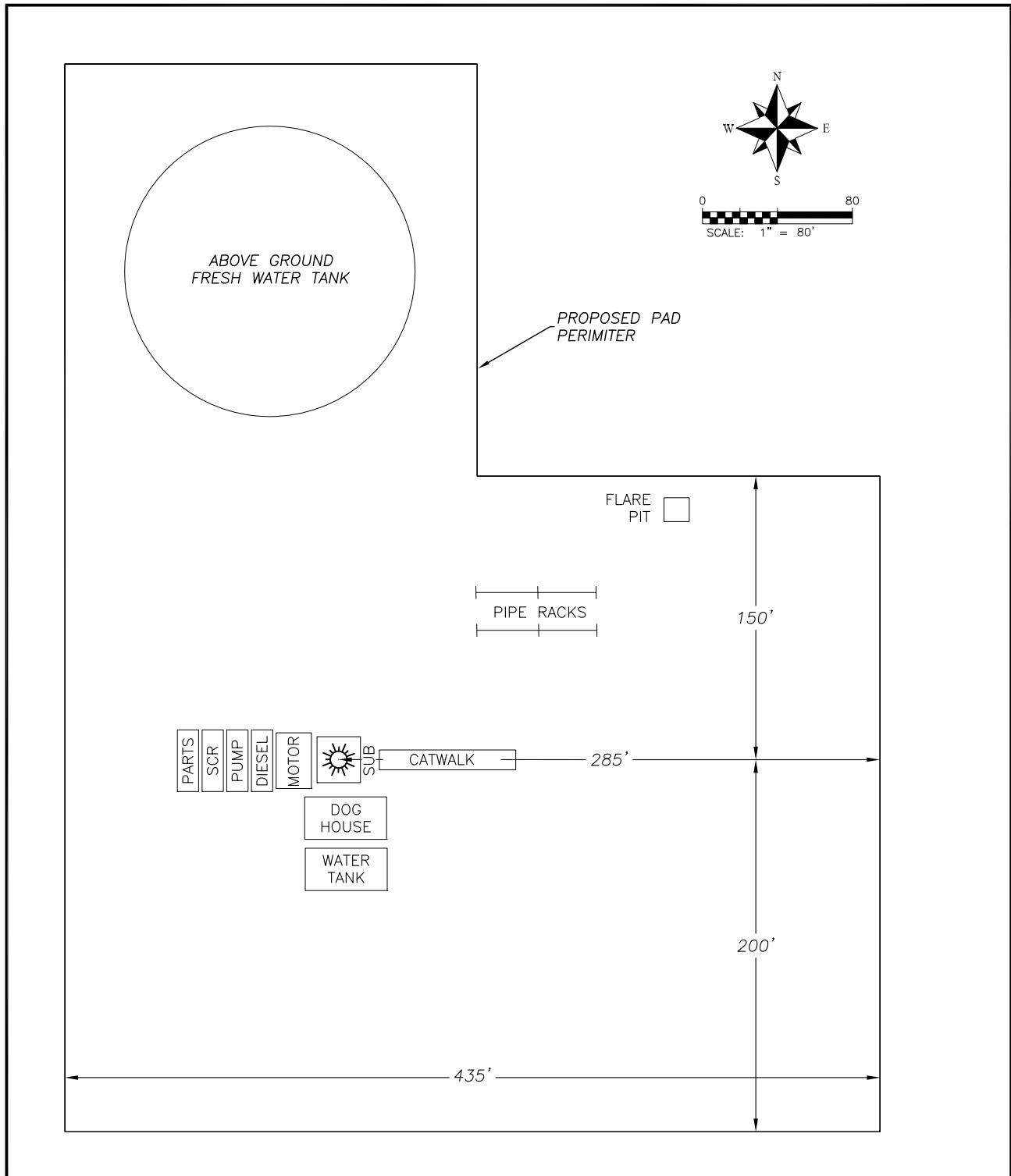
SECTION 24, TOWNSHIP 1 SOUTH, RANGE 67 WEST OF THE 6TH PRINCIPAL MERIDIAN



Horizontal Scale 50  
Vertical Scale 5

## PROPOSED RIG LAYOUT SHARP 24-3-11HC

SECTION 24, TOWNSHIP 1 SOUTH, RANGE 67 WEST OF THE 6TH PRINCIPAL MERIDIAN



PROPOSED PRODUCTION FACILITY  
SHARP 24-3-11HC

SECTION 24, TOWNSHIP 1 SOUTH, RANGE 67 WEST OF THE 6TH PRINCIPAL MERIDIAN

