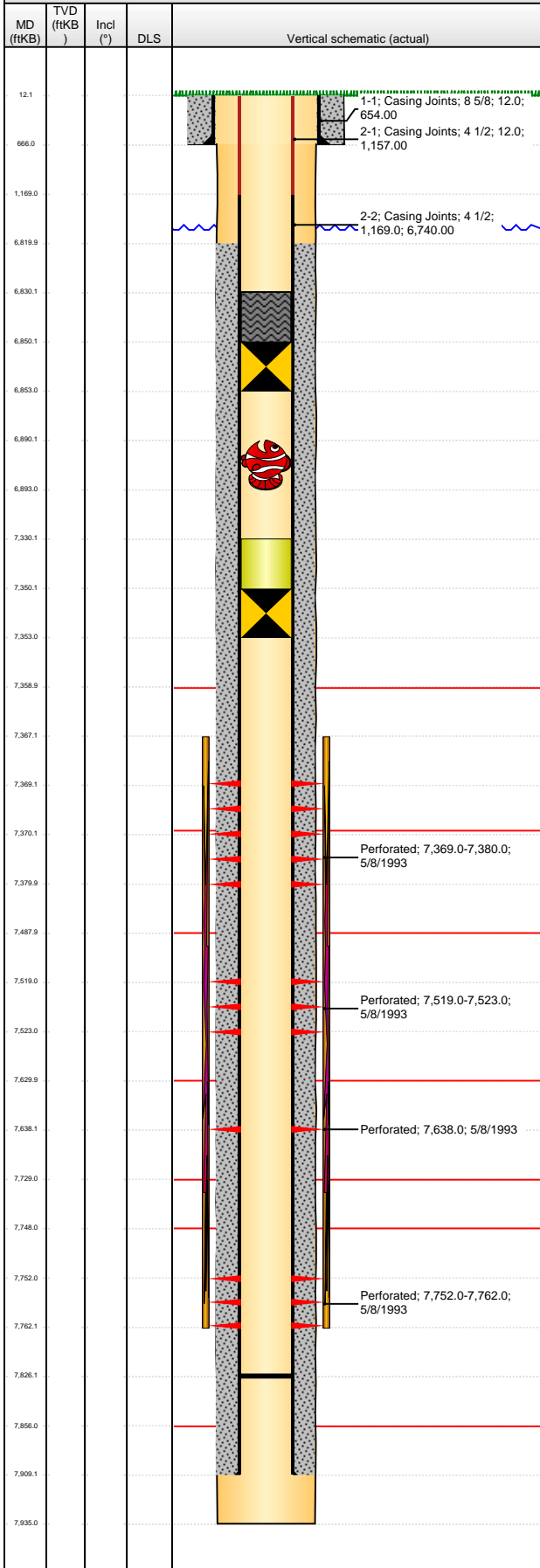


**Well Name: VON REYN MC09-03**

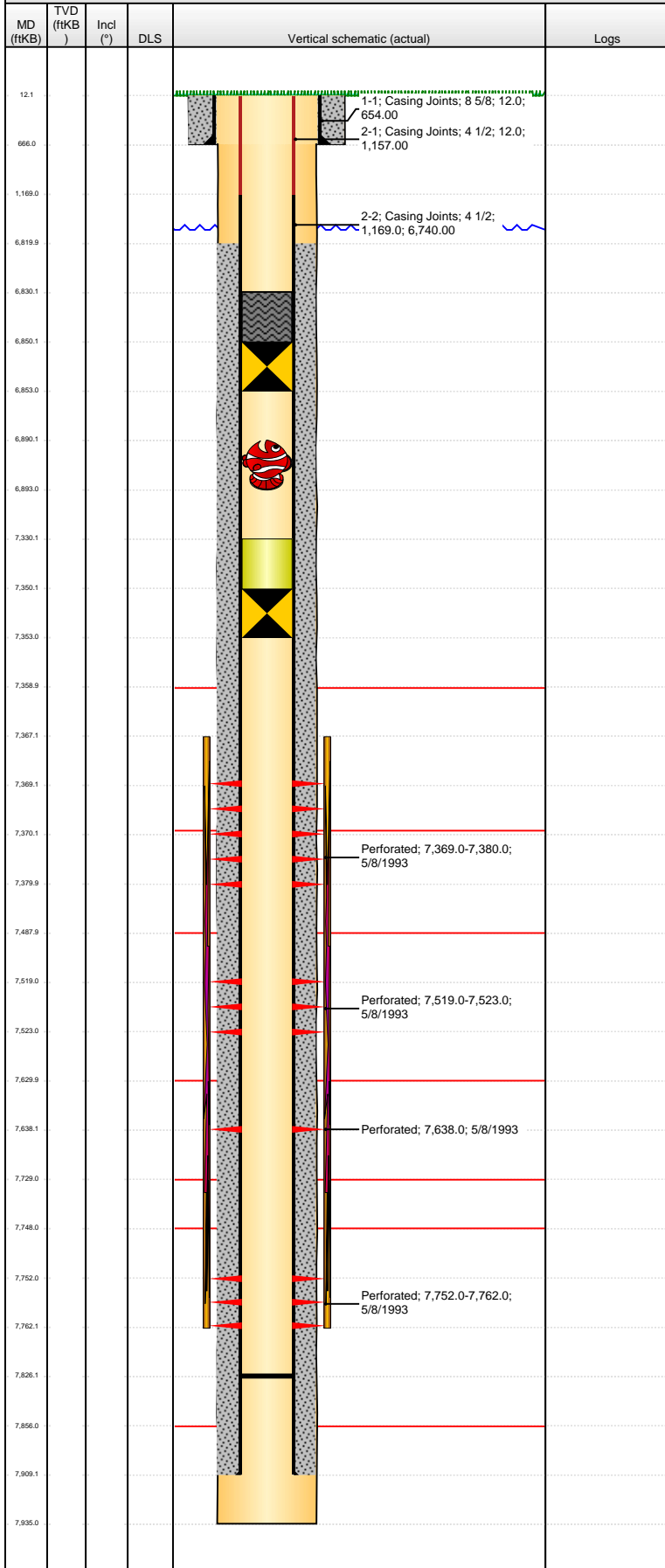
VERTICAL - ORIGINAL HOLE, 1/23/2013 9:58:00 AM



Logs	API 05-013-06302		Business Unit WATTENBERG		District 15		Well Config VERTICAL		
	Original KB Elevation (ft) 5,187.00		KB - GL / MSL (ftKB) 12.00		Spud Date 4/20/1993		P & A Date		
	Comment								
	Directions To Well HWY 287 & LOOKOUT RD, W 7/10, S 1/10, E 2/10 INTO.								
	Congressional Location								
	Quarter 1	Quarter 2	Quarter 3	Quarter 4	Section	Township	Twnshp N...	Range	Rng E/W Dir
			NE	NW	9	1	N	69	W
	Bottom Hole Location								
	North-South Distance (ft)		From N or S Line		East-West Distance (ft)		From E or W Line		
	Plug Back Total Depths								
	Date	Depth (ftKB)	Method			Com			
	4/28/1993	7,826.0	TAG						
	Wellbore Sections								
	Section Des		Size (in)		Act Top (ftKB)		Act Btm (ftKB)		
	SURFACE		12 1/4		12.0		666.0		
	PRODUCTION		7 7/8		666.0		7,935.0		
	Zone Statuses								
	Zone Name		Status Date		Status		Job		
	CODELL		6/3/1993		PR		DRILLING/COMPLETION - ORIGINAL, 4/20/1993 00:00		
	CODELL		6/14/2005		SI		SCIENTIFIC DATA COLLECTION, 6/13/2005 00:00		
	CODELL		9/19/2007		AB		SCIENTIFIC DATA COLLECTION, 9/18/2007 00:00		
	NIOBRARA		6/3/1993		PR		DRILLING/COMPLETION - ORIGINAL, 4/20/1993 00:00		
	NIOBRARA		6/14/2005		SI		SCIENTIFIC DATA COLLECTION, 6/13/2005 00:00		
	NIOBRARA		9/19/2007		AB		SCIENTIFIC DATA COLLECTION, 9/18/2007 00:00		
	Casing Strings								
	Surface Casing, 666.0ftKB								
	Casing Description		Run Date		OD (in)	Wt/Len (l...	Grade	Top (ftKB)	Set Depth...
	Surface Casing		4/20/1993		8 5/8	23.00		12.0	666.0
	Production, 7,909.0ftKB								
	Casing Description		Run Date		OD (in)	Wt/Len (l...	Grade	Top (ftKB)	Set Depth...
	Production		4/28/1993		4 1/2	11.60	J-55	12.0	7,909.0
	Cement								
	Description					Top Depth (ftKB)		Bottom Depth (ftKB)	
	SURFACE CASING CEMENT					12.0		666.0	
	Description					Top Depth (ftKB)		Bottom Depth (ftKB)	
	PRODUCTION CASING CEMENT					6,820.0		7,909.0	
	Description					Top Depth (ftKB)		Bottom Depth (ftKB)	
	DUMP BAIL					6,830.0		6,850.0	
	Tubing Components								
	Item Des		OD (in)	Wt (lb/ft)	Grade	Jts	Len (ft)	Btm (ftKB)	Btm (TVD) (ftKB)
	Perforation Data								
	Zone		Bnch/St g	Entered Shot Total	Top (ftKB)		Btm (ftKB)		Date
	NIOBRARA, ORIGINAL HOLE			3	7,369.00		7,380.00		5/8/1993
	NIOBRARA, ORIGINAL HOLE			3	7,519.00		7,523.00		5/8/1993
	NIOBRARA, ORIGINAL HOLE			1	7,638.00		7,638.00		5/8/1993
	CODELL, ORIGINAL HOLE			6	7,752.00		7,762.00		5/8/1993
	Stimulations & Treatments								
	Date	Zone			Primary Job Type				
	5/10/1993	NB-CD, ORIGINAL HOLE			DRILLING/COMPLETION - ORIGINAL				
	Technical Result			Tech Result Details			Tech Result Note		
	Comment								
	Other In Hole								
	Run Date	Des				OD (in)	Top (ftKB)	Btm (ftKB)	
	6/14/2005	Retrievable Bridge Plug				3.99	7,350.0	7,353.0	
	6/14/2005	Sand plug				3.99	7,330.0	7,350.0	
	9/18/2007	Retrievable Bridge Plug				3.99	6,890.0	6,893.0	
	9/19/2007	Bridge Plug - Permanent				3.99	6,850.0	6,853.0	

**Well Name: VON REYN MC09-03**

VERTICAL - ORIGINAL HOLE, 1/23/2013 9:58:01 AM



Logs			
Date	Type	Top (ftKB)	Btm (ftKB)
4/28/1993	COMPENSATED DENSITY	6,950.0	7,935.0
4/28/1993	INDUCTION	6,950.0	7,929.0
5/7/1993	CBL/CCL/GR	6,620.0	7,821.0
12/29/2012	GYRO	12.0	6,866.0