

E 1/4 Cor. Sec. 24, T8N, R92W
1992 Alum. Cap
0.4' High
Lat: 40.630284°
Long: 107.658306°

T8N, R91W, 6th P.M.

AXIA ENERGY

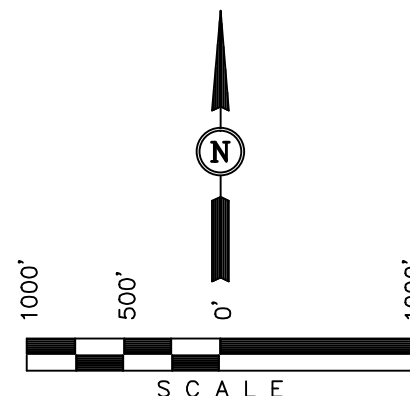
Well location, BULLDOG #30-21H-891 (SURFACE LOCATION), located as shown in the NE 1/4 NW 1/4 of Section 30, T8N, R91W, 6th P.M., Moffat County, Colorado.

BASIS OF ELEVATION

SPOT ELEVATION LOCATED AT THE SOUTHWEST CORNER OF SECTION 15, T7N, R91W, 6th P.M. TAKEN FROM THE CRAIG QUADRANGLE, COLORADO, MOFFAT COUNTY, 7.5 MINUTE QUAD (TOPOGRAPHIC MAP) PUBLISHED BY THE UNITED STATES DEPARTMENT OF THE INTERIOR, GEOLOGICAL SURVEY. SAID ELEVATION IS MARKED AS BEING 6672 FEET.

BASIS OF BEARINGS

BASIS OF BEARINGS IS A G.P.S. OBSERVATION.



CERTIFICATE

THIS IS TO CERTIFY THAT THE ABOVE WAS PREPARED FROM FIELD NOTES OF ACTUAL SURVEYS MADE BY ME OR UNDER MY SUPERVISION AND THAT THE SAME ARE TRUE AND CORRECT TO THE BEST OF MY KNOWLEDGE AND BELIEF.

REGISTERED LAND SURVEYOR
REGISTRATION NO. 17492
STATE OF COLORADO

REVISED: 11-20-13 M.D.

UINTAH ENGINEERING & LAND SURVEYING
85 SOUTH 200 EAST - VERNAL, UTAH 84078
(435) 789-1017

| | | |
|-------------------------|----------------------------|-------------------------|
| SCALE 1" = 1000' | DATE SURVEYED: 01-04-13 | DATE DRAWN: 01-07-13 |
| PARTY G.M. T.A. T.B. | REFERENCES G.L.O. PLAT | |
| WEATHER COLD | FILE | AXIA ENERGY |

PDOP = 1.5

| NAD 83 (SURFACE LOCATION) | |
|--|--|
| LATITUDE = 40°37'36.03" (40.626675) | |
| LONGITUDE = 107°38'52.91" (107.648031) | |
| NAD 27 (SURFACE LOCATION) | |
| LATITUDE = 40°37'36.14" (40.626706) | |
| LONGITUDE = 107°38'50.66" (107.647406) | |
| STATE PLANE NAD 83 | |
| N: 1478360.70 E: 2403809.62 | |
| STATE PLANE NAD 27 | |
| N: 478359.34 E: 1403967.35 | |

LEGEND:

- = 90° SYMBOL
- = PROPOSED WELL HEAD.
- ▲ = SECTION CORNERS LOCATED.

C.C. 2013 Alum. Cap
0.5' High, N-S Fence
Lat: 40.630139°
Long: 107.658306°

LOT 5

1910 Brass Cap
0.7' High,
E-W Fence
Lat: 40.630092°
Long: 107.647806°

1910 Brass Cap
0.2' High,
E-W Fence
Lat: 40.630075°
Long: 107.638666°

BULLDOG #30-21H-891
Elev. Ungraded Ground = 7042'

NOTE:
THE PROPOSED PILOT HOLE FOR THIS WELL
IS LOCATED IN THE SE 1/4 NW 1/4 OF
SECTION 30, T8N, R91W, 6th P.M. AT 1985'
FNL 1981' FWL. IT BEARS S49°58'38"W
1140.73' FROM THE PROPOSED WELL HEAD.

E 1/4 Cor.
Sec. 25, T8N, R92W
1991 Alum. Cap
0.2' High, Fence Post
Lat: 40.615801°
Long: 107.658313°

LOT 8

LOT 9
TRACT 37

1910 Brass Cap
0.1' High,
SW Cor. Fence Post
Lat: 40.615680°
Long: 107.648152°

1910 Brass Cap
0.9' High,
E-W Fence
Lat: 40.615657°
Long: 107.638621°

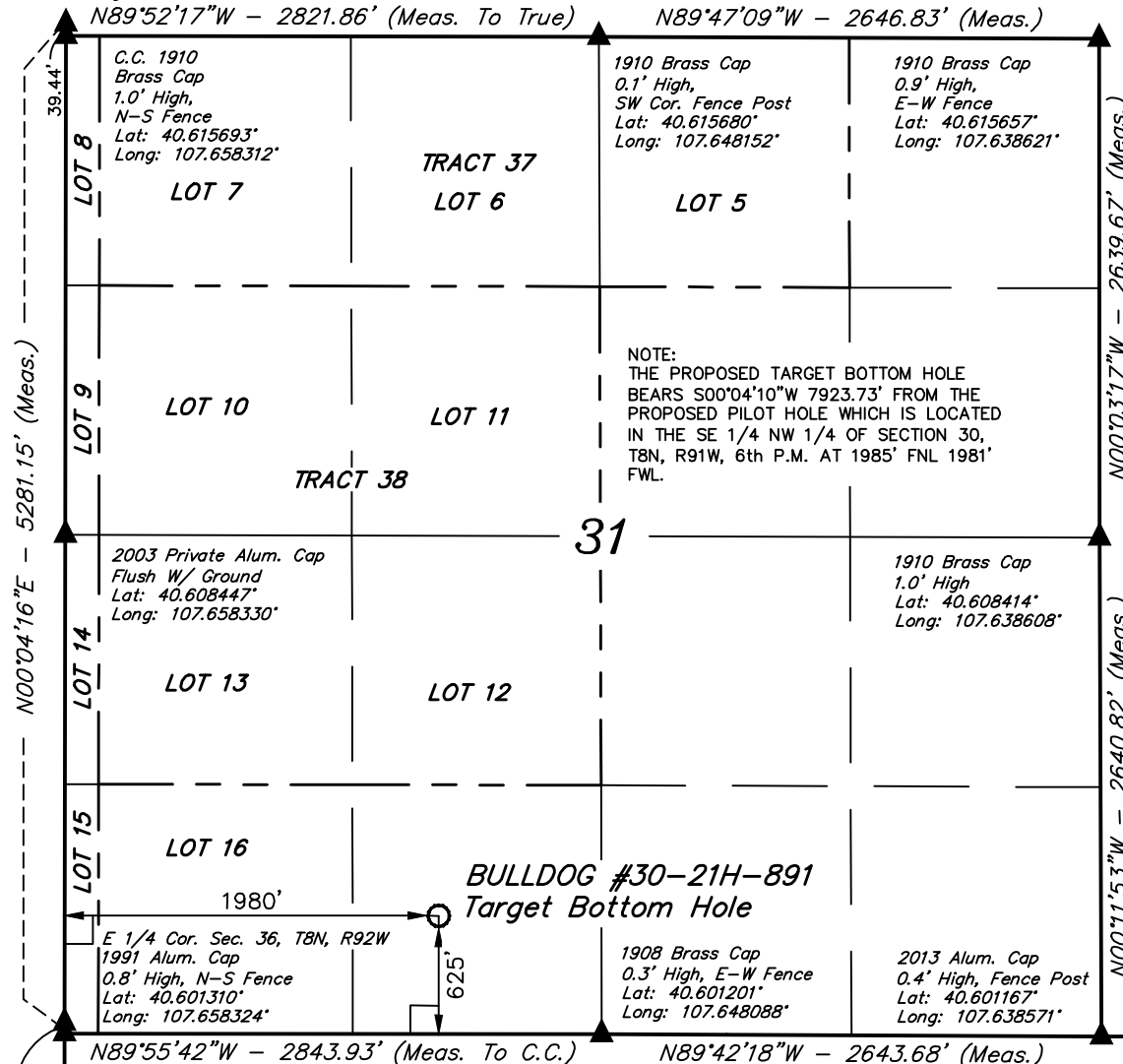
C.C. 1910 Brass Cap
1.0' High,
N-S Fence
Lat: 40.615693°
Long: 107.658312°

E 1/4 Cor. Sec. 36,
T8N, R92W
1991 Alum. Cap
0.8' High, N-S Fence
Lat: 40.601310°
Long: 107.658324°

T8N, R91W, 6th P.M.

E 1/4 Cor. Sec. 25, T8N, R92W
1991 Alum. Cap
0.2' High, Fence Post
Lat: 40.615801°
Long: 107.658313°

N89°52'17"W - 2821.86' (Meas. To True) N89°47'09"W - 2646.83' (Meas.)



LEGEND:

- └─ = 90° SYMBOL
- = PROPOSED WELL HEAD.
- ▲ = SECTION CORNERS LOCATED.

R
92
W

AXIA ENERGY

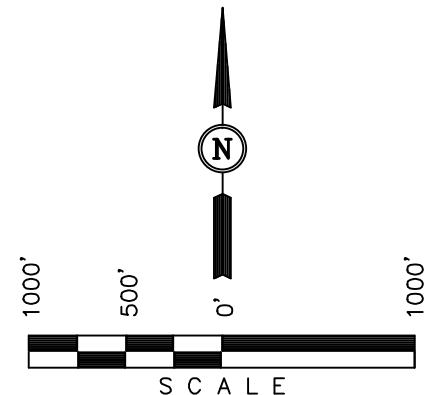
Well location, BULLDOG #30-21H-891 (TARGET BOTTOM HOLE), located as shown in the SE 1/4 SW 1/4 of Section 31, T8N, R91W, 6th P.M., Moffat County, Colorado.

BASIS OF ELEVATION

SPOT ELEVATION LOCATED AT THE SOUTHWEST CORNER OF SECTION 15, T7N, R91W, 6th P.M. TAKEN FROM THE CRAIG QUADRANGLE, COLORADO, MOFFAT COUNTY, 7.5 MINUTE QUAD (TOPOGRAPHIC MAP) PUBLISHED BY THE UNITED STATES DEPARTMENT OF THE INTERIOR, GEOLOGICAL SURVEY. SAID ELEVATION IS MARKED AS BEING 6672 FEET.

BASIS OF BEARINGS

BASIS OF BEARINGS IS A G.P.S. OBSERVATION.



CERTIFICATE

THIS IS TO CERTIFY THAT THE ABOVE MAP WAS PREPARED FROM FIELD NOTES OF ACTUAL SURVEYS MADE BY ME OR UNDER MY SUPERVISION AND THAT THE SAME ARE TRUE AND CORRECT TO THE BEST OF MY KNOWLEDGE AND BELIEF.

REGISTERED LAND SURVEYOR
REGISTRATION NO. 17492
STATE OF COLORADO

REVISED: 11-20-13 M.D.

UINTAH ENGINEERING & LAND SURVEYING
85 SOUTH 200 EAST - VERNAL, UTAH 84078
(435) 789-1017

| | | |
|-------------------------|----------------------------|-------------------------|
| SCALE 1" = 1000' | DATE SURVEYED: 01-04-13 | DATE DRAWN: 01-07-13 |
| PARTY G.M. T.A. T.B. | REFERENCES G.L.O. PLAT | |
| WEATHER COLD | FILE AXIA ENERGY | |

| |
|--|
| NAD 83 (TARGET BOTTOM HOLE) |
| LATITUDE = 40°36'10.50" (40.602917) |
| LONGITUDE = 107°39'04.30" (107.651194) |
| NAD 27 (TARGET BOTTOM HOLE) |
| LATITUDE = 40°36'10.61" (40.602947) |
| LONGITUDE = 107°39'02.05" (107.650569) |
| STATE PLANE NAD 83 |
| N: 1469729.65 E: 2402722.03 |
| STATE PLANE NAD 27 |
| N: 469728.35 E: 1402879.78 |