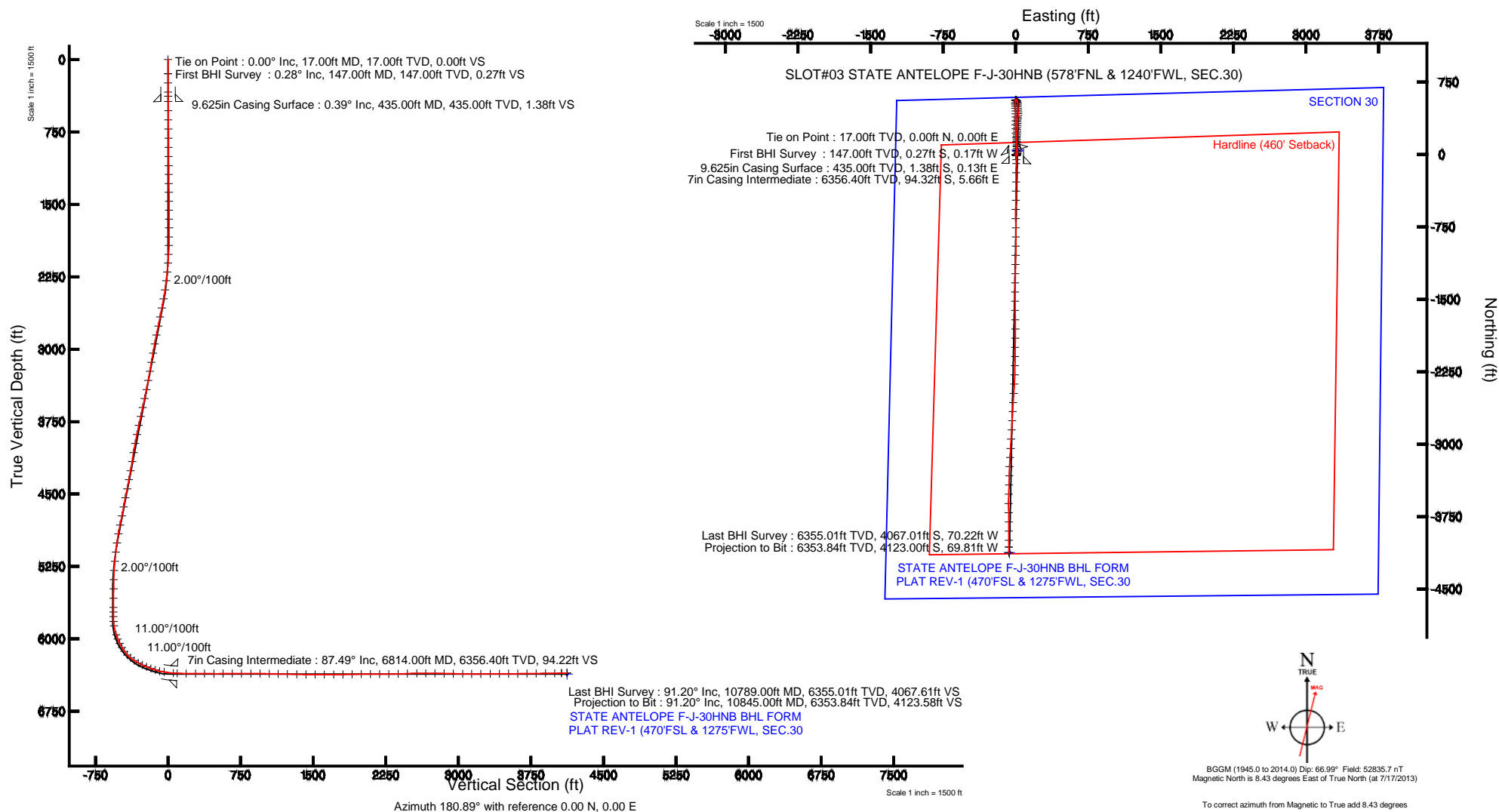


Location:	COLORADO	Slot:	SLOT#03 STATE ANTELOPE F-J-30HNB (578'FNL & 1240'FWL, SEC.30)
Field:	WELD COUNTY	Well:	STATE ANTELOPE F-J-30HNB
Facility:	SEC.30-T5N-R62W	Wellbore:	STATE ANTELOPE F-J-30HNB PWB

Location Information						
Facility Name			Grid East (US ft)	Grid North (US ft)	Latitude	Longitude
SEC.30-T5N-R62W			3314735.928	1381829.438	40°22'33.672"N	104°22'13.080"W
Slot	Local N (ft)	Local E (ft)	Grid East (US ft)	Grid North (US ft)	Latitude	Longitude
SLOT#03 STATE ANTELOPE F-J-30HNB (578FNL & 1240FWL, SEC.30)	-36.43	-16.72	3314719.677	1381792.798	40°22'33.312"N	104°22'13.296"W
CADE 22 (RKB) to Mud line (At Slot: SLOT#03 STATE ANTELOPE F-J-30HNB (578FNL & 1240FWL, SEC.30))					4626ft	
Mean Sea Level to Mud line (At Slot: SLOT#03 STATE ANTELOPE F-J-30HNB (578FNL & 1240FWL, SEC.30))					0ft	
CADE 22 (RKB) to Mean Sea Level					4626ft	

Plot reference wellpath is STATE ANTELOPE F-J-30HNB (REV-A.0) PWP	
True vertical depths are referenced to CADE 22 (RKB)	Grid System: NAD83 / Lambert Colorado SP, Northern Zone (501), US feet
Measured depths are referenced to CADE 22 (RKB)	North Reference: True north
CADE 22 (RKB) to Mean Sea Level: 4626 feet	Scale: True distance
Mean Sea Level to Mud line (At Slot: SLOTF03 STATE ANTELOPE F-J-30HNB (578FTNL & 1240FWL, SEC.30)): 0 feet	Depths are in feet
Coordinates are in feet referenced to Slot	
Created by: ggunaler on 8/21/2013	





# Actual Wellpath Report

STATE ANTELOPE F-J-30HNB AWB

Page 1 of 7



## REFERENCE WELLPATH IDENTIFICATION

Operator	BONANZA CREEK OIL COMPANY	Slot	SLOT#03 STATE ANTELOPE F-J-30HNB (578'FNL & 1240'FWL, SEC.30)
Area	COLORADO	Well	STATE ANTELOPE F-J-30HNB
Field	WELD COUNTY	Wellbore	STATE ANTELOPE F-J-30HNB AWB
Facility	SEC.30-T5N-R62W		

## REPORT SETUP INFORMATION

Projection System	NAD83 / Lambert Colorado SP, Northern Zone (501), US feet	Software System	WellArchitect® 4.0.0
North Reference	True	User	Guenaler
Scale	0.999959	Report Generated	8/21/2013 at 4:27:30 PM
Convergence at slot	n/a	Database/Source file	WA_Denver/STATE_ANTELOPE_F-J-30HNB_AWB.xml

## WELLPATH LOCATION

	Local coordinates		Grid coordinates		Geographic coordinates	
	North[ft]	East[ft]	Easting[US ft]	Northing[US ft]	Latitude	Longitude
Slot Location	-36.43	-16.72	3314719.68	1381792.80	40°22'33.312"N	104°22'13.296"W
Facility Reference Pt			3314735.93	1381829.44	40°22'33.672"N	104°22'13.080"W
Field Reference Pt			3327718.19	1377782.99	40°21'52.020"N	104°19'26.040"W

## WELLPATH DATUM

Calculation method	Minimum curvature	CADE 22 (RKB) to Facility Vertical Datum	4626.00ft
Horizontal Reference Pt	Slot	CADE 22 (RKB) to Mean Sea Level	4626.00ft
Vertical Reference Pt	CADE 22 (RKB)	CADE 22 (RKB) to Mud Line at Slot (SLOT#03 STATE ANTELOPE F-J-30HNB (578'FNL & 1240'FWL, SEC.30))	4626.00ft
MD Reference Pt	CADE 22 (RKB)	Section Origin	N 0.00, E 0.00 ft
Field Vertical Reference	Mean Sea Level	Section Azimuth	180.97°



# Actual Wellpath Report

STATE ANTELOPE F-J-30HNB AWB  
Page 2 of 7



## REFERENCE WELLPATH IDENTIFICATION

Operator	BONANZA CREEK OIL COMPANY	Slot	SLOT#03 STATE ANTELOPE F-J-30HNB (578'FNL & 1240'FWL, SEC.30)
Area	COLORADO	Well	STATE ANTELOPE F-J-30HNB
Field	WELD COUNTY	Wellbore	STATE ANTELOPE F-J-30HNB AWB
Facility	SEC.30-T5N-R62W		

## WELLPATH DATA (125 stations)

MD [ft]	Inclination [°]	Azimuth [°]	TVD [ft]	Vert Sect [ft]	North [ft]	East [ft]	Latitude	Longitude	DLS [°/100ft]	Comments
0.00	0.000	212.460	0.00	0.00	0.00	0.00	40°22'33.312"N	104°22'13.296"W	0.00	
17.00	0.000	212.460	17.00	0.00	0.00	0.00	40°22'33.312"N	104°22'13.296"W	0.00	Tie on Point
147.00	0.280	212.460	147.00	0.27	-0.27	-0.17	40°22'33.309"N	104°22'13.298"W	0.22	First BHI Survey
242.00	0.180	124.490	242.00	0.55	-0.55	-0.17	40°22'33.307"N	104°22'13.298"W	0.34	
337.00	0.300	165.380	337.00	0.87	-0.87	0.01	40°22'33.303"N	104°22'13.296"W	0.21	
379.00	0.270	159.270	379.00	1.07	-1.07	0.08	40°22'33.301"N	104°22'13.295"W	0.10	
529.00	0.620	189.450	528.99	2.20	-2.20	0.07	40°22'33.290"N	104°22'13.295"W	0.27	
625.00	0.470	166.340	624.99	3.10	-3.10	0.08	40°22'33.281"N	104°22'13.295"W	0.27	
720.00	0.460	191.560	719.99	3.85	-3.85	0.09	40°22'33.274"N	104°22'13.295"W	0.21	
815.00	0.360	183.190	814.98	4.52	-4.52	0.00	40°22'33.267"N	104°22'13.296"W	0.12	
910.00	0.280	160.560	909.98	5.04	-5.04	0.06	40°22'33.262"N	104°22'13.295"W	0.16	
1006.00	0.560	141.450	1005.98	5.62	-5.63	0.43	40°22'33.256"N	104°22'13.290"W	0.32	
1099.00	0.690	131.730	1098.97	6.34	-6.36	1.13	40°22'33.249"N	104°22'13.281"W	0.18	
1191.00	0.690	137.110	1190.97	7.10	-7.13	1.92	40°22'33.242"N	104°22'13.271"W	0.07	
1284.00	0.650	147.380	1283.96	7.94	-7.98	2.59	40°22'33.233"N	104°22'13.263"W	0.14	
1376.00	0.780	138.630	1375.95	8.84	-8.89	3.28	40°22'33.224"N	104°22'13.254"W	0.18	
1468.00	0.830	123.510	1467.94	9.66	-9.73	4.25	40°22'33.216"N	104°22'13.241"W	0.24	
1560.00	1.020	117.370	1559.93	10.38	-10.48	5.53	40°22'33.208"N	104°22'13.224"W	0.23	
1653.00	0.940	101.660	1652.92	10.89	-11.01	7.02	40°22'33.203"N	104°22'13.205"W	0.30	
1744.00	1.110	102.470	1743.90	11.20	-11.35	8.61	40°22'33.200"N	104°22'13.185"W	0.19	
1837.00	1.140	44.740	1836.89	10.72	-10.89	10.14	40°22'33.204"N	104°22'13.165"W	1.17	
1926.00	1.930	31.840	1925.86	8.79	-8.99	11.55	40°22'33.223"N	104°22'13.147"W	0.96	
2017.00	3.480	29.950	2016.75	5.06	-5.29	13.74	40°22'33.260"N	104°22'13.118"W	1.71	
2108.00	4.420	17.480	2107.54	-0.72	0.45	16.17	40°22'33.316"N	104°22'13.087"W	1.39	
2200.00	5.780	15.190	2199.17	-8.61	8.30	18.45	40°22'33.394"N	104°22'13.058"W	1.49	
2292.00	6.970	356.690	2290.61	-18.67	18.34	19.34	40°22'33.493"N	104°22'13.046"W	2.56	
2387.00	8.200	353.290	2384.78	-31.13	30.83	18.22	40°22'33.617"N	104°22'13.061"W	1.38	
2482.00	9.870	353.560	2478.60	-45.92	45.65	16.51	40°22'33.763"N	104°22'13.083"W	1.76	
2578.00	11.230	357.970	2572.97	-63.42	63.17	15.26	40°22'33.936"N	104°22'13.099"W	1.65	
2673.00	11.330	357.430	2666.14	-81.97	81.73	14.51	40°22'34.120"N	104°22'13.108"W	0.15	



# Actual Wellpath Report

STATE ANTELOPE F-J-30HNB AWB

Page 3 of 7



## REFERENCE WELLPATH IDENTIFICATION

Operator	BONANZA CREEK OIL COMPANY	Slot	SLOT#03 STATE ANTELOPE F-J-30HNB (578'FNL & 1240'FWL, SEC.30)
Area	COLORADO	Well	STATE ANTELOPE F-J-30HNB
Field	WELD COUNTY	Wellbore	STATE ANTELOPE F-J-30HNB AWB
Facility	SEC.30-T5N-R62W		

## WELLPATH DATA (125 stations)

MD [ft]	Inclination [°]	Azimuth [°]	TVD [ft]	Vert Sect [ft]	North [ft]	East [ft]	Latitude	Longitude	DLS [°/100ft]	Comments
2769.00	11.080	356.490	2760.31	-100.58	100.36	13.53	40°22'34.304"N	104°22'13.121"W	0.32	
2864.00	11.550	358.260	2853.46	-119.18	118.98	12.68	40°22'34.488"N	104°22'13.132"W	0.62	
2959.00	10.570	356.690	2946.70	-137.37	137.18	11.89	40°22'34.668"N	104°22'13.142"W	1.08	
3055.00	10.850	358.590	3041.02	-155.17	155.01	11.16	40°22'34.844"N	104°22'13.152"W	0.47	
3151.00	9.500	1.420	3135.51	-172.12	171.96	11.13	40°22'35.011"N	104°22'13.152"W	1.50	
3246.00	9.630	2.690	3229.19	-187.91	187.74	11.70	40°22'35.167"N	104°22'13.145"W	0.26	
3341.00	10.460	2.470	3322.73	-204.47	204.29	12.44	40°22'35.331"N	104°22'13.135"W	0.87	
3438.00	11.470	3.870	3417.96	-222.90	222.71	13.47	40°22'35.513"N	104°22'13.122"W	1.08	
3532.00	11.730	4.070	3510.04	-241.78	241.56	14.78	40°22'35.699"N	104°22'13.105"W	0.28	
3627.00	12.190	2.430	3602.98	-261.45	261.22	15.89	40°22'35.893"N	104°22'13.091"W	0.60	
3722.00	12.440	2.340	3695.79	-281.71	281.46	16.73	40°22'36.093"N	104°22'13.080"W	0.26	
3817.00	11.830	2.250	3788.67	-301.67	301.42	17.53	40°22'36.291"N	104°22'13.069"W	0.64	
3913.00	11.320	3.420	3882.72	-320.92	320.65	18.48	40°22'36.481"N	104°22'13.057"W	0.58	
4009.00	10.630	0.970	3976.96	-339.19	338.91	19.19	40°22'36.661"N	104°22'13.048"W	0.87	
4105.00	9.510	0.880	4071.48	-355.97	355.70	19.47	40°22'36.827"N	104°22'13.044"W	1.17	
4199.00	8.500	2.520	4164.32	-370.69	370.40	19.89	40°22'36.972"N	104°22'13.039"W	1.11	
4295.00	11.370	11.240	4258.88	-387.09	386.78	22.05	40°22'37.134"N	104°22'13.011"W	3.37	
4389.00	10.220	9.090	4351.21	-404.47	404.10	25.17	40°22'37.305"N	104°22'12.971"W	1.30	
4485.00	11.610	359.010	4445.48	-422.55	422.17	26.35	40°22'37.484"N	104°22'12.956"W	2.45	
4581.00	10.580	355.780	4539.69	-440.99	440.62	25.53	40°22'37.666"N	104°22'12.966"W	1.25	
4677.00	10.430	352.910	4634.08	-458.37	458.03	23.81	40°22'37.838"N	104°22'12.988"W	0.57	
4772.00	11.700	358.270	4727.31	-476.50	476.19	22.46	40°22'38.018"N	104°22'13.006"W	1.72	
4867.00	11.550	357.550	4820.37	-495.62	495.32	21.76	40°22'38.207"N	104°22'13.015"W	0.22	
4961.00	9.770	0.050	4912.74	-512.99	512.70	21.37	40°22'38.378"N	104°22'13.020"W	1.96	
5057.00	8.120	353.720	5007.57	-527.86	527.59	20.63	40°22'38.525"N	104°22'13.029"W	2.00	
5152.00	6.820	346.400	5101.77	-539.98	539.74	18.57	40°22'38.646"N	104°22'13.056"W	1.69	
5247.00	5.940	338.680	5196.18	-549.98	549.80	15.46	40°22'38.745"N	104°22'13.096"W	1.29	
5343.00	4.410	326.170	5291.79	-557.61	557.50	11.60	40°22'38.821"N	104°22'13.146"W	1.97	
5438.00	1.510	295.340	5386.65	-561.13	561.07	8.43	40°22'38.856"N	104°22'13.187"W	3.38	
5534.00	1.950	301.470	5482.61	-562.48	562.46	5.90	40°22'38.870"N	104°22'13.220"W	0.50	



# Actual Wellpath Report

STATE ANTELOPE F-J-30HNB AWB

Page 4 of 7



## REFERENCE WELLPATH IDENTIFICATION

Operator	BONANZA CREEK OIL COMPANY	Slot	SLOT#03 STATE ANTELOPE F-J-30HNB (578'FNL & 1240'FWL, SEC.30)
Area	COLORADO	Well	STATE ANTELOPE F-J-30HNB
Field	WELD COUNTY	Wellbore	STATE ANTELOPE F-J-30HNB AWB
Facility	SEC.30-T5N-R62W		

## WELLPATH DATA (125 stations)

MD [ft]	Inclination [°]	Azimuth [°]	TVD [ft]	Vert Sect [ft]	North [ft]	East [ft]	Latitude	Longitude	DLS [°/100ft]	Comments
5630.00	1.610	285.620	5578.56	-563.65	563.68	3.21	40°22'38.882"N	104°22'13.255"W	0.62	
5726.00	1.580	282.490	5674.53	-564.26	564.33	0.61	40°22'38.888"N	104°22'13.288"W	0.10	
5774.00	1.830	276.110	5722.51	-564.46	564.55	-0.79	40°22'38.891"N	104°22'13.306"W	0.65	
5822.00	1.320	276.120	5770.49	-564.57	564.69	-2.11	40°22'38.892"N	104°22'13.323"W	1.06	
5870.00	3.570	196.190	5818.45	-563.18	563.31	-3.07	40°22'38.878"N	104°22'13.336"W	7.46	
5917.00	8.750	187.500	5865.16	-558.21	558.36	-3.95	40°22'38.830"N	104°22'13.347"W	11.17	
6012.00	17.810	179.230	5957.54	-536.47	536.62	-4.70	40°22'38.615"N	104°22'13.357"W	9.72	
6058.00	21.780	180.670	6000.81	-520.89	521.05	-4.70	40°22'38.461"N	104°22'13.357"W	8.69	
6108.00	26.550	178.620	6046.41	-500.44	500.59	-4.54	40°22'38.259"N	104°22'13.355"W	9.69	
6156.00	30.480	176.000	6088.59	-477.59	477.71	-3.43	40°22'38.033"N	104°22'13.340"W	8.59	
6204.00	34.890	176.040	6128.97	-451.77	451.86	-1.64	40°22'37.777"N	104°22'13.317"W	9.19	
6252.00	43.340	178.390	6166.19	-421.58	421.64	-0.22	40°22'37.479"N	104°22'13.299"W	17.87	
6298.00	50.140	180.920	6197.69	-388.11	388.17	-0.06	40°22'37.148"N	104°22'13.297"W	15.31	
6346.00	58.510	182.090	6225.66	-349.16	349.23	-1.11	40°22'36.763"N	104°22'13.310"W	17.55	
6394.00	61.430	180.750	6249.68	-307.61	307.69	-2.13	40°22'36.352"N	104°22'13.323"W	6.55	
6442.00	65.760	177.910	6271.03	-264.65	264.72	-1.61	40°22'35.928"N	104°22'13.317"W	10.46	
6489.00	68.820	176.520	6289.17	-221.39	221.42	0.51	40°22'35.500"N	104°22'13.289"W	7.06	
6537.00	69.180	176.420	6306.37	-176.72	176.69	3.27	40°22'35.058"N	104°22'13.254"W	0.77	
6584.00	72.410	177.840	6321.83	-132.44	132.37	5.48	40°22'34.620"N	104°22'13.225"W	7.44	
6630.00	77.490	179.510	6333.77	-88.07	87.97	6.50	40°22'34.181"N	104°22'13.212"W	11.59	
6679.00	80.000	179.610	6343.34	-40.03	39.92	6.87	40°22'33.706"N	104°22'13.207"W	5.13	
6774.00	86.660	181.010	6354.36	54.26	-54.38	6.35	40°22'32.775"N	104°22'13.214"W	7.16	
6908.00	89.450	180.940	6358.91	188.17	-188.27	4.07	40°22'31.452"N	104°22'13.243"W	2.08	
7004.00	90.030	180.240	6359.35	284.17	-284.26	3.09	40°22'30.503"N	104°22'13.256"W	0.95	
7098.00	89.230	180.580	6359.96	378.16	-378.26	2.41	40°22'29.574"N	104°22'13.265"W	0.92	
7194.00	89.660	180.890	6360.88	474.16	-474.24	1.18	40°22'28.626"N	104°22'13.281"W	0.55	
7290.00	90.860	180.550	6360.45	570.15	-570.23	-0.03	40°22'27.677"N	104°22'13.296"W	1.30	
7385.00	89.720	179.520	6359.97	665.13	-665.23	-0.08	40°22'26.738"N	104°22'13.297"W	1.62	
7480.00	90.650	179.120	6359.66	760.09	-760.22	1.04	40°22'25.800"N	104°22'13.283"W	1.07	
7575.00	89.880	180.200	6359.22	855.07	-855.22	1.61	40°22'24.861"N	104°22'13.275"W	1.40	



# Actual Wellpath Report

STATE ANTELOPE F-J-30HNB AWB

Page 5 of 7



## REFERENCE WELLPATH IDENTIFICATION

Operator	BONANZA CREEK OIL COMPANY	Slot	SLOT#03 STATE ANTELOPE F-J-30HNB (578'FNL & 1240'FWL, SEC.30)
Area	COLORADO	Well	STATE ANTELOPE F-J-30HNB
Field	WELD COUNTY	Wellbore	STATE ANTELOPE F-J-30HNB AWB
Facility	SEC.30-T5N-R62W		

## WELLPATH DATA (125 stations)

MD [ft]	Inclination [°]	Azimuth [°]	TVD [ft]	Vert Sect [ft]	North [ft]	East [ft]	Latitude	Longitude	DLS [°/100ft]	Comments
7670.00	89.380	180.400	6359.84	950.06	-950.21	1.11	40°22'23.922"N	104°22'13.282"W	0.57	
7765.00	88.800	180.620	6361.34	1045.04	-1045.20	0.26	40°22'22.984"N	104°22'13.293"W	0.65	
7859.00	88.830	181.100	6363.29	1139.02	-1139.16	-1.15	40°22'22.055"N	104°22'13.311"W	0.51	
7954.00	88.920	181.510	6365.15	1234.00	-1234.12	-3.31	40°22'21.117"N	104°22'13.339"W	0.44	
8050.00	88.490	181.020	6367.32	1329.97	-1330.07	-5.43	40°22'20.169"N	104°22'13.366"W	0.68	
8145.00	89.970	180.410	6368.60	1424.96	-1425.05	-6.61	40°22'19.230"N	104°22'13.381"W	1.69	
8241.00	89.350	179.400	6369.17	1520.94	-1521.05	-6.45	40°22'18.281"N	104°22'13.379"W	1.23	
8336.00	90.740	179.510	6369.10	1615.91	-1616.04	-5.55	40°22'17.343"N	104°22'13.368"W	1.47	
8432.00	89.480	178.310	6368.91	1711.84	-1712.02	-3.72	40°22'16.394"N	104°22'13.344"W	1.81	
8528.00	91.020	180.270	6368.49	1807.79	-1808.01	-2.53	40°22'15.446"N	104°22'13.329"W	2.60	
8623.00	90.890	181.320	6366.91	1902.78	-1902.98	-3.85	40°22'14.507"N	104°22'13.346"W	1.11	
8718.00	90.890	180.680	6365.43	1997.76	-1997.96	-5.51	40°22'13.569"N	104°22'13.367"W	0.67	
8813.00	89.940	180.350	6364.74	2092.76	-2092.95	-6.36	40°22'12.630"N	104°22'13.378"W	1.06	
8907.00	90.180	181.370	6364.65	2186.76	-2186.94	-7.77	40°22'11.701"N	104°22'13.396"W	1.11	
9003.00	90.220	181.110	6364.31	2282.75	-2282.91	-9.85	40°22'10.753"N	104°22'13.423"W	0.27	
9099.00	91.610	183.650	6362.78	2378.70	-2378.81	-13.84	40°22'09.805"N	104°22'13.475"W	3.02	
9195.00	92.190	183.780	6359.60	2474.54	-2474.55	-20.05	40°22'08.859"N	104°22'13.555"W	0.62	
9291.00	90.710	183.600	6357.17	2570.40	-2570.32	-26.23	40°22'07.913"N	104°22'13.635"W	1.55	
9385.00	89.350	182.970	6357.12	2664.32	-2664.16	-31.62	40°22'06.986"N	104°22'13.704"W	1.59	
9480.00	90.060	182.970	6357.61	2759.26	-2759.03	-36.54	40°22'06.048"N	104°22'13.768"W	0.75	
9575.00	88.700	183.270	6358.63	2854.18	-2853.89	-41.71	40°22'05.111"N	104°22'13.835"W	1.47	
9670.00	88.950	183.260	6360.58	2949.09	-2948.71	-47.12	40°22'04.174"N	104°22'13.905"W	0.26	
9766.00	89.350	183.190	6362.01	3045.00	-3044.55	-52.52	40°22'03.227"N	104°22'13.974"W	0.42	
9860.00	88.890	183.410	6363.45	3138.91	-3138.38	-57.93	40°22'02.299"N	104°22'14.044"W	0.54	
9955.00	90.890	182.990	6363.63	3233.84	-3233.23	-63.23	40°22'01.362"N	104°22'14.113"W	2.15	
10051.00	90.990	180.830	6362.06	3329.80	-3329.16	-66.43	40°22'00.414"N	104°22'14.154"W	2.25	
10146.00	89.910	181.770	6361.31	3424.80	-3424.13	-68.59	40°21'59.476"N	104°22'14.182"W	1.51	
10241.00	90.250	181.930	6361.18	3519.79	-3519.08	-71.65	40°21'58.538"N	104°22'14.222"W	0.40	
10337.00	90.090	179.520	6360.89	3615.78	-3615.06	-72.87	40°21'57.589"N	104°22'14.237"W	2.52	
10432.00	90.650	179.680	6360.28	3710.75	-3710.06	-72.20	40°21'56.650"N	104°22'14.229"W	0.61	



# Actual Wellpath Report

## STATE ANTELOPE F-J-30HNB AWB

Page 6 of 7



### REFERENCE WELLPATH IDENTIFICATION

Operator	BONANZA CREEK OIL COMPANY	Slot	SLOT#03 STATE ANTELOPE F-J-30HNB (578'FNL & 1240'FWL, SEC.30)
Area	COLORADO	Well	STATE ANTELOPE F-J-30HNB
Field	WELD COUNTY	Wellbore	STATE ANTELOPE F-J-30HNB AWB
Facility	SEC.30-T5N-R62W		

### WELLPATH DATA (125 stations)

MD [ft]	Inclination [°]	Azimuth [°]	TVD [ft]	Vert Sect [ft]	North [ft]	East [ft]	Latitude	Longitude	DLS [°/100ft]	Comments
10527.00	90.960	179.480	6358.95	3805.71	-3805.04	-71.51	40°21'55.712"N	104°22'14.220"W	0.39	
10623.00	90.620	179.810	6357.62	3901.68	-3901.03	-70.91	40°21'54.763"N	104°22'14.212"W	0.49	
10717.00	90.930	179.810	6356.35	3995.65	-3995.02	-70.60	40°21'53.834"N	104°22'14.208"W	0.33	
10789.00	91.200	179.580	6355.01	4067.62	-4067.01	-70.22	40°21'53.123"N	104°22'14.203"W	0.49	Last BHI Survey
10845.00	91.200	179.580	6353.84	4123.59	-4123.00	-69.81	40°21'52.570"N	104°22'14.198"W	0.00	Projection to Bit

### HOLE & CASING SECTIONS -

Ref Wellbore: STATE ANTELOPE F-J-30HNB AWB Ref Wellpath: STATE ANTELOPE F-J-30HNB AWB

String/Diameter	Start MD [ft]	End MD [ft]	Interval [ft]	Start TVD [ft]	End TVD [ft]	Start N/S [ft]	Start E/W [ft]	End N/S [ft]	End E/W [ft]
9.625in Casing Surface	17.00	435.00	418.00	17.00	435.00	0.00	0.00	-1.38	0.13
8.5in Open Hole	435.00	6820.00	6385.00	435.00	6356.66	-1.38	0.13	-100.31	5.55
7in Casing Intermediate	17.00	6814.00	6797.00	17.00	6356.40	0.00	0.00	-94.32	5.66
6.125in Open Hole	6814.00	10845.00	4031.00	6356.40	6353.84	-94.32	5.66	-4123.00	-69.81

### WELLPATH COMPOSITION -

Ref Wellbore: STATE ANTELOPE F-J-30HNB AWB Ref Wellpath: STATE ANTELOPE F-J-30HNB AWB

Start MD [ft]	End MD [ft]	Positional Uncertainty Model	Log Name/Comment	Wellbore
0.00	6774.00	NaviTrak (MagCorr)	BHI/Navitrak MWD 8.75" HOLE <17-6774>	STATE ANTELOPE F-J-30HNB AWB
6774.00	10789.00	NaviTrak (MagCorr)	BHI/Navitrak MWD 6.125" HOLE <6908'-10789>	STATE ANTELOPE F-J-30HNB AWB
10789.00	10845.00	Blind Drilling (std)	Projection to bit	STATE ANTELOPE F-J-30HNB AWB





Actual Wellpath Report  
STATE ANTELOPE F-J-30HNB AWB  
Page 7 of 7



REFERENCE WELLPATH IDENTIFICATION			
Operator	BONANZA CREEK OIL COMPANY	Slot	SLOT#03 STATE ANTELOPE F-J-30HNB (578'FNL & 1240'FWL, SEC.30)
Area	COLORADO	Well	STATE ANTELOPE F-J-30HNB
Field	WELD COUNTY	Wellbore	STATE ANTELOPE F-J-30HNB AWB
Facility	SEC.30-T5N-R62W		

WELLPATH COMMENTS				
MD [ft]	Inclination [°]	Azimuth [°]	TVD [ft]	Comment
17.00	0.000	212.460	17.00	Tie on Point
147.00	0.280	212.460	147.00	First BHI Survey
10789.00	91.200	179.580	6355.01	Last BHI Survey
10845.00	91.200	179.580	6353.84	Projection to Bit