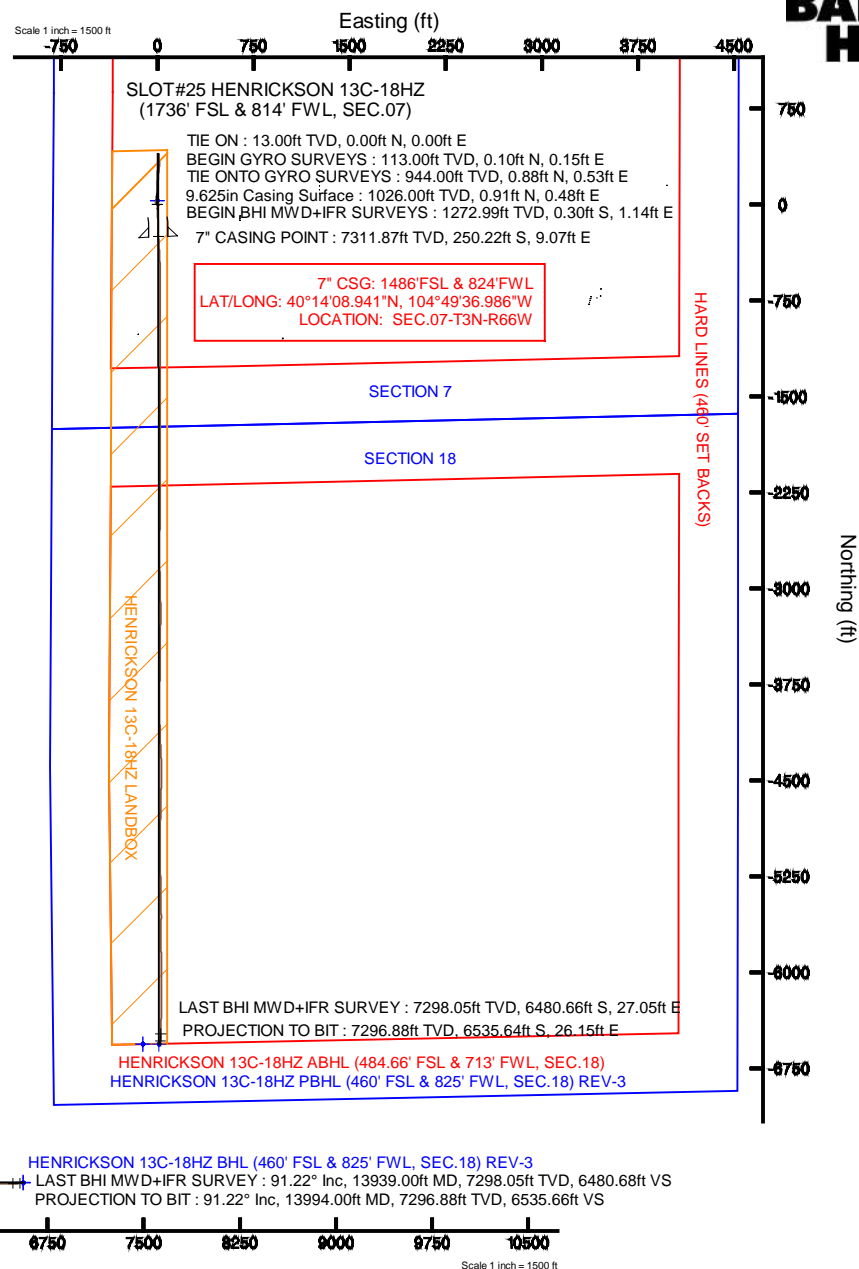
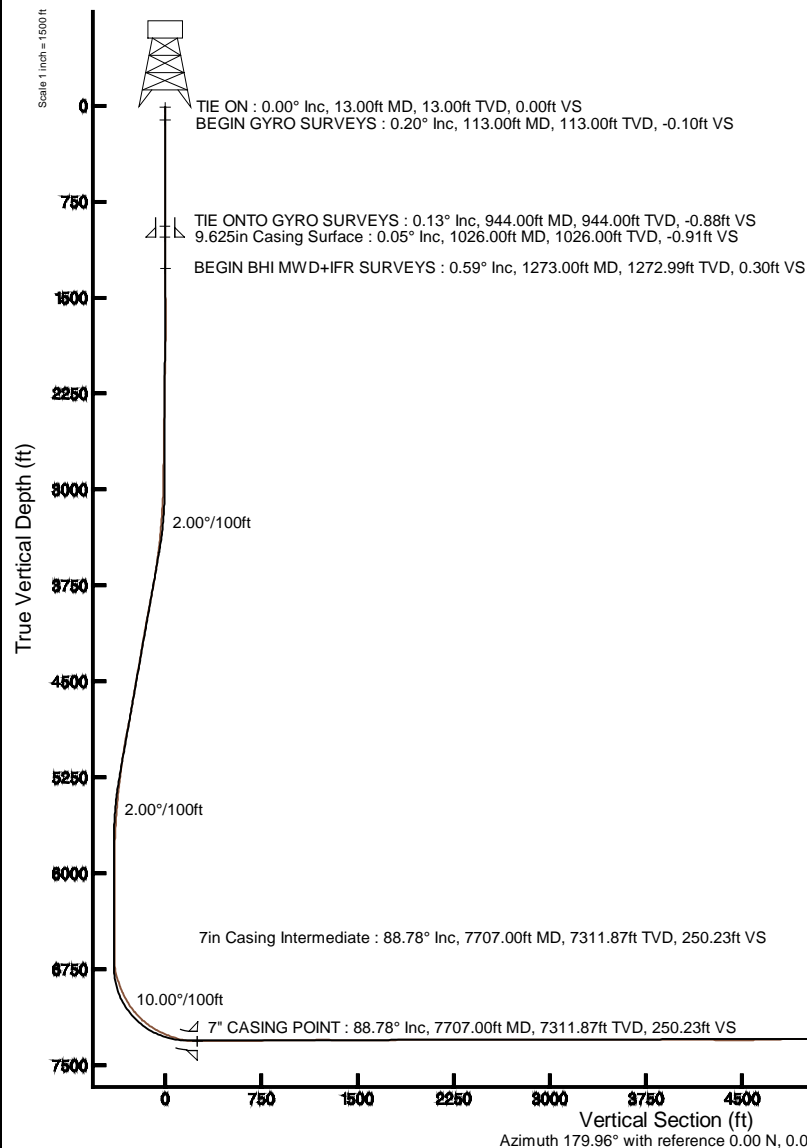


KERR-MCGEE OIL & GAS ONSHORE LP

Location: COLORADO Slot: SLOT#25 HENRICKSON 13C-18HZ (1736' FSL & 814' FWL, SEC.07)
 Field: WELD COUNTY (KERR MCGEE) Well: HENRICKSON 13C-18HZ
 Facility: SEC.07-T3N-R66W Wellbore: HENRICKSON 13C-18HZ PWB

Plot reference wellpath is HENRICKSON 13C-18HZ (REV-B.0) PWP

True vertical depths are referenced to ENSIGN 145 (4806' GL+13'KB) (RKB)	Grid System: NAD83 / Lambert Colorado SP, Northern Zone (501), US feet
Measured depths are referenced to ENSIGN 145 (4806' GL+13'KB) (RKB)	North Reference: True north
ENSGN 145 (4806' GL+13'KB) (RKB) to Mean Sea Level: 4806 feet	Scale: True distance
Mean Sea Level to Mud line (At Slot: SLOT#25 HENRICKSON 13C-18HZ (1736' FSL & 814' FWL, SEC.07)): 0 feet	Depths are in feet
Coordinates are in feet referenced to Slot	Created by: robied01 on 10/Oct/2013





Actual Wellpath Report

HENRICKSON 13C-18HZ AWP

Page 1 of 7



REFERENCE WELLPATH IDENTIFICATION

Operator	KERR-MCGEE OIL & GAS ONSHORE LP	Slot	SLOT#25 HENRICKSON 13C-18HZ (1736' FSL & 814' FWL, SEC.07)
Area	COLORADO	Well	HENRICKSON 13C-18HZ
Field	WELD COUNTY (KERR MCGEE)	Wellbore	HENRICKSON 13C-18HZ AWP
Facility	SEC.07-T3N-R66W		

REPORT SETUP INFORMATION

Projection System	NAD83 / Lambert Colorado SP, Northern Zone (501), US feet	Software System	WellArchitect® 4.0.0
North Reference	True	User	Robiale01
Scale	0.999957	Report Generated	10/Oct/2013 at 11:23
Convergence at slot	n/a	Database/Source file	WA_ANADARKO/HENRICKSON_13C-18HZ_AWP.xml

WELLPATH LOCATION

	Local coordinates		Grid coordinates		Geographic coordinates	
	North[ft]	East[ft]	Easting[US ft]	Northing[US ft]	Latitude	Longitude
Slot Location	-1728.90	-2413.09	3187895.22	1329713.30	40°14'11.414"N	104°49'37.103"W
Facility Reference Pt			3190294.85	1331460.62	40°14'28.500"N	104°49'05.988"W
Field Reference Pt			3197771.84	1268891.29	40°04'09.600"N	104°47'36.000"W

WELLPATH DATUM

Calculation method	Minimum curvature	ENSIGN 145 (4806': 4793' GL+13'KB) (RKB) to Facility Vertical Datum	4806.00ft
Horizontal Reference Pt	Slot	ENSIGN 145 (4806': 4793' GL+13'KB) (RKB) to Mean Sea Level	4806.00ft
Vertical Reference Pt	ENSIGN 145 (4806': 4793' GL+13'KB) (RKB)	ENSIGN 145 (4806': 4793' GL+13'KB) (RKB) to Mud Line at Slot (SLOT#25 HENRICKSON 13C-18HZ (1736' FSL & 814' FWL, SEC.07))	4806.00ft
MD Reference Pt	ENSIGN 145 (4806': 4793' GL+13'KB) (RKB)	Section Origin	N 0.00, E 0.00 ft
Field Vertical Reference	Mean Sea Level	Section Azimuth	179.96°



Actual Wellpath Report

HENRICKSON 13C-18HZ AWP

Page 2 of 7



REFERENCE WELLPATH IDENTIFICATION

Operator	KERR-MCGEE OIL & GAS ONSHORE LP	Slot	SLOT#25 HENRICKSON 13C-18HZ (1736' FSL & 814' FWL, SEC.07)
Area	COLORADO	Well	HENRICKSON 13C-18HZ
Field	WELD COUNTY (KERR MCGEE)	Wellbore	HENRICKSON 13C-18HZ AWP
Facility	SEC.07-T3N-R66W		

WELLPATH DATA (145 stations) † = interpolated/extrapolated station

MD [ft]	Inclination [°]	Azimuth [°]	TVD [ft]	Vert Sect [ft]	North [ft]	East [ft]	Latitude	Longitude	DLS [°/100ft]	Comments
0.00†	0.000	56.260	0.00	0.00	0.00	0.00	40°14'11.414"N	104°49'37.103"W	0.00	
13.00	0.000	56.260	13.00	0.00	0.00	0.00	40°14'11.414"N	104°49'37.103"W	0.00	TIE ON
113.00	0.200	56.260	113.00	-0.10	0.10	0.15	40°14'11.415"N	104°49'37.101"W	0.20	BEGIN GYRO SURVEYS
213.00	0.230	11.580	213.00	-0.39	0.39	0.33	40°14'11.418"N	104°49'37.099"W	0.17	
313.00	0.160	83.430	313.00	-0.60	0.60	0.51	40°14'11.420"N	104°49'37.096"W	0.24	
413.00	0.190	51.310	413.00	-0.72	0.72	0.78	40°14'11.421"N	104°49'37.093"W	0.10	
513.00	0.150	139.630	513.00	-0.73	0.73	0.99	40°14'11.421"N	104°49'37.090"W	0.24	
613.00	0.140	338.420	613.00	-0.74	0.74	1.03	40°14'11.421"N	104°49'37.090"W	0.29	
713.00	0.210	192.950	713.00	-0.67	0.68	0.95	40°14'11.421"N	104°49'37.091"W	0.33	
813.00	0.220	322.450	813.00	-0.65	0.65	0.79	40°14'11.420"N	104°49'37.093"W	0.39	
913.00	0.110	292.720	913.00	-0.84	0.84	0.58	40°14'11.422"N	104°49'37.095"W	0.14	
944.00	0.130	321.370	944.00	-0.88	0.88	0.53	40°14'11.423"N	104°49'37.096"W	0.20	TIE ONTO GYRO SURVEYS
1273.00	0.590	150.080	1272.99	0.30	-0.30	1.14	40°14'11.411"N	104°49'37.088"W	0.22	BEGIN BHI MWD+IFR SURVEYS
1367.00	0.650	146.980	1366.99	1.17	-1.17	1.68	40°14'11.402"N	104°49'37.081"W	0.07	
1741.00	0.800	99.970	1740.96	3.40	-3.40	5.40	40°14'11.380"N	104°49'37.033"W	0.16	
1835.00	1.440	331.180	1834.95	2.48	-2.48	5.48	40°14'11.390"N	104°49'37.032"W	2.17	
2199.00	1.200	316.150	2198.85	-4.28	4.28	0.64	40°14'11.456"N	104°49'37.095"W	0.12	
2559.00	1.020	319.430	2558.79	-9.44	9.43	-4.06	40°14'11.507"N	104°49'37.155"W	0.05	
2919.00	1.310	303.650	2918.71	-14.15	14.15	-9.57	40°14'11.554"N	104°49'37.226"W	0.12	
3009.00	1.790	351.180	3008.68	-16.11	16.11	-10.64	40°14'11.573"N	104°49'37.240"W	1.47	
3099.00	2.890	4.420	3098.61	-19.77	19.76	-10.68	40°14'11.609"N	104°49'37.241"W	1.35	
3188.00	3.970	3.590	3187.45	-25.08	25.07	-10.32	40°14'11.662"N	104°49'37.236"W	1.21	
3279.00	4.600	11.700	3278.19	-31.79	31.79	-9.38	40°14'11.728"N	104°49'37.224"W	0.96	
3369.00	5.720	8.800	3367.83	-39.76	39.75	-7.96	40°14'11.807"N	104°49'37.206"W	1.28	
3459.00	6.720	3.850	3457.30	-49.45	49.44	-6.92	40°14'11.903"N	104°49'37.192"W	1.26	
3549.00	7.420	7.750	3546.61	-60.46	60.45	-5.78	40°14'12.011"N	104°49'37.178"W	0.94	
3639.00	9.190	6.880	3635.66	-73.35	73.35	-4.14	40°14'12.139"N	104°49'37.156"W	1.97	
3729.00	9.620	8.910	3724.45	-87.91	87.91	-2.11	40°14'12.283"N	104°49'37.130"W	0.60	
3819.00	10.860	5.140	3813.02	-103.79	103.79	-0.19	40°14'12.440"N	104°49'37.105"W	1.57	
3909.00	11.250	4.280	3901.35	-120.98	120.99	1.23	40°14'12.610"N	104°49'37.087"W	0.47	
4089.00	10.120	2.520	4078.23	-154.29	154.29	3.23	40°14'12.939"N	104°49'37.061"W	0.65	

4179.00	8.840	0.080	4167.00	-169.11	169.11	3.59	40°14'13.085"N	104°49'37.057"W	1.49	
4269.00	9.580	1.270	4255.84	-183.51	183.51	3.76	40°14'13.227"N	104°49'37.054"W	0.85	
4359.00	10.780	1.770	4344.42	-199.41	199.41	4.19	40°14'13.385"N	104°49'37.049"W	1.34	
4539.00	9.230	357.460	4521.68	-230.66	230.66	4.07	40°14'13.693"N	104°49'37.051"W	0.96	
4719.00	9.800	0.830	4699.20	-260.40	260.40	3.65	40°14'13.987"N	104°49'37.056"W	0.44	
4899.00	11.300	0.210	4876.15	-293.35	293.36	3.94	40°14'14.313"N	104°49'37.052"W	0.84	
5079.00	9.310	358.040	5053.24	-325.54	325.55	3.51	40°14'14.631"N	104°49'37.058"W	1.13	
5169.00	7.930	355.630	5142.22	-339.01	339.01	2.78	40°14'14.764"N	104°49'37.067"W	1.58	
5259.00	6.140	352.670	5231.54	-349.98	349.98	1.70	40°14'14.872"N	104°49'37.081"W	2.03	
5349.00	6.940	2.250	5320.96	-360.18	360.18	1.30	40°14'14.973"N	104°49'37.086"W	1.50	
5439.00	5.660	1.880	5410.41	-370.05	370.05	1.66	40°14'15.071"N	104°49'37.082"W	1.42	
5529.00	4.470	358.430	5500.06	-377.99	378.00	1.70	40°14'15.149"N	104°49'37.081"W	1.36	
5619.00	3.380	353.000	5589.85	-384.13	384.14	1.29	40°14'15.210"N	104°49'37.086"W	1.28	
5709.00	3.140	357.360	5679.70	-389.23	389.23	0.85	40°14'15.260"N	104°49'37.092"W	0.38	



Actual Wellpath Report

HENRICKSON 13C-18HZ AWP

Page 3 of 7



REFERENCE WELLPATH IDENTIFICATION

Operator	KERR-MCGEE OIL & GAS ONSHORE LP	Slot	SLOT#25 HENRICKSON 13C-18HZ (1736' FSL & 814' FWL, SEC.07)
Area	COLORADO	Well	HENRICKSON 13C-18HZ
Field	WELD COUNTY (KERR MCGEE)	Wellbore	HENRICKSON 13C-18HZ AWB
Facility	SEC.07-T3N-R66W		

WELLPATH DATA (145 stations) † = interpolated/extrapolated station

MD [ft]	Inclination [°]	Azimuth [°]	TVD [ft]	Vert Sect [ft]	North [ft]	East [ft]	Latitude	Longitude	DLS [°/100ft]	Comments
5799.00	2.000	24.280	5769.61	-393.12	393.12	1.38	40°14'15.299"N	104°49'37.085"W	1.81	
5889.00	1.860	27.540	5859.56	-395.85	395.85	2.70	40°14'15.326"N	104°49'37.068"W	0.20	
5979.00	0.420	114.280	5949.55	-397.01	397.01	3.68	40°14'15.337"N	104°49'37.056"W	2.09	
6339.00	0.350	153.710	6309.54	-395.48	395.48	5.37	40°14'15.322"N	104°49'37.034"W	0.07	
6609.00	0.810	86.390	6579.53	-394.86	394.86	7.64	40°14'15.316"N	104°49'37.005"W	0.28	
6656.00	0.550	74.960	6626.52	-394.94	394.94	8.19	40°14'15.317"N	104°49'36.997"W	0.62	
6699.00	0.570	100.120	6669.52	-394.95	394.96	8.60	40°14'15.317"N	104°49'36.992"W	0.57	
6744.00	3.720	165.760	6714.49	-393.50	393.50	9.18	40°14'15.303"N	104°49'36.985"W	7.83	
6789.00	8.610	170.620	6759.21	-388.76	388.76	10.09	40°14'15.256"N	104°49'36.973"W	10.92	
6834.00	14.700	175.230	6803.27	-379.73	379.74	11.11	40°14'15.167"N	104°49'36.960"W	13.68	
6879.00	19.400	175.210	6846.28	-366.59	366.60	12.21	40°14'15.037"N	104°49'36.946"W	10.44	
6924.00	21.610	175.240	6888.42	-350.88	350.89	13.52	40°14'14.881"N	104°49'36.929"W	4.91	
6969.00	24.870	175.120	6929.76	-333.19	333.20	15.01	40°14'14.707"N	104°49'36.909"W	7.25	
7014.00	27.710	182.920	6970.12	-313.30	313.31	15.29	40°14'14.510"N	104°49'36.906"W	9.93	
7059.00	30.280	186.220	7009.48	-291.57	291.58	13.52	40°14'14.295"N	104°49'36.929"W	6.73	
7104.00	35.450	185.190	7047.26	-267.28	267.29	11.11	40°14'14.055"N	104°49'36.960"W	11.56	
7149.00	40.250	185.120	7082.79	-239.79	239.80	8.63	40°14'13.784"N	104°49'36.992"W	10.67	
7194.00	43.920	184.790	7116.18	-209.75	209.75	6.03	40°14'13.487"N	104°49'37.025"W	8.17	
7239.00	47.910	182.390	7147.48	-177.50	177.50	4.03	40°14'13.168"N	104°49'37.051"W	9.66	
7284.00	53.000	180.770	7176.12	-142.83	142.83	3.09	40°14'12.825"N	104°49'37.063"W	11.65	
7329.00	57.570	180.540	7201.74	-105.85	105.85	2.67	40°14'12.460"N	104°49'37.069"W	10.16	
7374.00	61.400	180.610	7224.59	-67.09	67.09	2.28	40°14'12.077"N	104°49'37.074"W	8.51	
7419.00	64.110	179.720	7245.19	-27.09	27.09	2.17	40°14'11.682"N	104°49'37.075"W	6.27	
7464.00	67.150	178.880	7263.75	13.90	-13.89	2.68	40°14'11.277"N	104°49'37.069"W	6.97	
7509.00	71.140	179.010	7279.77	55.93	-55.93	3.45	40°14'10.861"N	104°49'37.059"W	8.87	
7554.00	75.020	178.920	7292.86	98.97	-98.97	4.23	40°14'10.436"N	104°49'37.048"W	8.62	
7599.00	79.320	178.940	7302.86	142.83	-142.83	5.05	40°14'10.003"N	104°49'37.038"W	9.56	
7629.00	83.090	178.720	7307.44	172.46	-172.46	5.65	40°14'09.710"N	104°49'37.030"W	12.59	
7644.00	85.000	178.160	7309.00	187.38	-187.37	6.06	40°14'09.562"N	104°49'37.025"W	13.26	
7661.00	87.010	177.390	7310.18	204.32	-204.32	6.72	40°14'09.395"N	104°49'37.016"W	12.66	
7707.00†	88.782	176.734	7311.87	250.23	-250.22	9.07	40°14'08.941"N	104°49'36.986"W	4.11	7" CASING POINT

7729.00	89.630	176.420	7312.18	272.19	-272.18	10.39	40°14'08.724"N	104°49'36.969"W	4.11	
7792.00	90.620	176.820	7312.04	335.08	-335.07	14.10	40°14'08.103"N	104°49'36.921"W	1.69	
7885.00	90.580	177.090	7311.06	427.95	-427.94	19.04	40°14'07.185"N	104°49'36.857"W	0.29	
7979.00	90.300	178.450	7310.34	521.88	-521.86	22.70	40°14'06.257"N	104°49'36.810"W	1.48	
8072.00	90.800	180.150	7309.45	614.86	-614.85	23.83	40°14'05.338"N	104°49'36.796"W	1.91	
8166.00	90.860	180.390	7308.09	708.85	-708.83	23.39	40°14'04.409"N	104°49'36.801"W	0.26	
8260.00	90.980	180.500	7306.58	802.84	-802.82	22.66	40°14'03.481"N	104°49'36.811"W	0.17	
8353.00	91.320	179.310	7304.71	895.81	-895.80	22.81	40°14'02.562"N	104°49'36.809"W	1.33	
8443.00	90.180	179.660	7303.53	985.80	-985.79	23.62	40°14'01.673"N	104°49'36.798"W	1.33	
8533.00	90.240	181.120	7303.20	1075.80	-1075.78	23.01	40°14'00.783"N	104°49'36.806"W	1.62	
8623.00	90.770	180.580	7302.41	1165.78	-1165.77	21.68	40°13'59.894"N	104°49'36.824"W	0.84	
8713.00	89.560	180.650	7302.15	1255.77	-1255.76	20.71	40°13'59.005"N	104°49'36.836"W	1.35	
8803.00	89.500	180.230	7302.89	1345.77	-1345.75	20.02	40°13'58.115"N	104°49'36.845"W	0.47	
8894.00	90.000	179.830	7303.29	1436.77	-1436.75	19.97	40°13'57.216"N	104°49'36.845"W	0.70	



Actual Wellpath Report

HENRICKSON 13C-18HZ AWP

Page 4 of 7



REFERENCE WELLPATH IDENTIFICATION

Operator	KERR-MCGEE OIL & GAS ONSHORE LP	Slot	SLOT#25 HENRICKSON 13C-18HZ (1736' FSL & 814' FWL, SEC.07)
Area	COLORADO	Well	HENRICKSON 13C-18HZ
Field	WELD COUNTY (KERR MCGEE)	Wellbore	HENRICKSON 13C-18HZ AWP
Facility	SEC.07-T3N-R66W		

WELLPATH DATA (145 stations)

MD [ft]	Inclination [°]	Azimuth [°]	TVD [ft]	Vert Sect [ft]	North [ft]	East [ft]	Latitude	Longitude	DLS [°/100ft]	Comments
8984.00	88.820	180.280	7304.21	1526.76	-1526.75	19.89	40°13'56.327"N	104°49'36.847"W	1.40	
9074.00	89.160	179.470	7305.80	1616.74	-1616.73	20.08	40°13'55.438"N	104°49'36.844"W	0.98	
9164.00	91.380	179.990	7305.38	1706.74	-1706.72	20.51	40°13'54.548"N	104°49'36.839"W	2.53	
9254.00	92.120	180.250	7302.63	1796.69	-1796.68	20.32	40°13'53.659"N	104°49'36.841"W	0.87	
9344.00	91.470	179.700	7299.81	1886.65	-1886.63	20.36	40°13'52.770"N	104°49'36.841"W	0.95	
9434.00	90.210	180.370	7298.49	1976.64	-1976.62	20.30	40°13'51.881"N	104°49'36.841"W	1.59	
9523.00	90.640	179.840	7297.83	2065.63	-2065.62	20.14	40°13'51.002"N	104°49'36.843"W	0.77	
9613.00	89.660	179.990	7297.59	2155.63	-2155.62	20.27	40°13'50.112"N	104°49'36.842"W	1.10	
9703.00	90.120	179.490	7297.77	2245.63	-2245.62	20.68	40°13'49.223"N	104°49'36.836"W	0.75	
9793.00	89.070	180.280	7298.40	2335.63	-2335.61	20.86	40°13'48.334"N	104°49'36.834"W	1.46	
9883.00	89.500	180.050	7299.52	2425.62	-2425.60	20.60	40°13'47.444"N	104°49'36.837"W	0.54	
9973.00	90.030	180.780	7299.89	2515.61	-2515.60	19.95	40°13'46.555"N	104°49'36.846"W	1.00	
10063.00	90.150	181.060	7299.75	2605.60	-2605.59	18.50	40°13'45.666"N	104°49'36.864"W	0.34	
10153.00	89.810	179.730	7299.78	2695.60	-2695.58	17.88	40°13'44.776"N	104°49'36.872"W	1.53	
10243.00	90.210	179.660	7299.77	2785.59	-2785.58	18.36	40°13'43.887"N	104°49'36.866"W	0.45	
10333.00	90.030	178.360	7299.58	2875.58	-2875.57	19.92	40°13'42.998"N	104°49'36.846"W	1.46	
10424.00	90.460	178.980	7299.19	2966.56	-2966.54	22.03	40°13'42.099"N	104°49'36.819"W	0.83	
10513.00	90.890	178.910	7298.14	3055.54	-3055.52	23.67	40°13'41.220"N	104°49'36.798"W	0.49	
10604.00	89.900	179.480	7297.51	3146.52	-3146.51	24.95	40°13'40.320"N	104°49'36.781"W	1.26	
10693.00	89.260	180.470	7298.17	3235.52	-3235.50	24.99	40°13'39.441"N	104°49'36.781"W	1.32	
10783.00	90.150	181.040	7298.63	3325.51	-3325.49	23.80	40°13'38.552"N	104°49'36.796"W	1.17	
10873.00	89.380	180.270	7299.00	3415.50	-3415.48	22.77	40°13'37.662"N	104°49'36.809"W	1.21	
10963.00	89.530	180.480	7299.86	3505.49	-3505.48	22.18	40°13'36.773"N	104°49'36.817"W	0.29	
11054.00	89.780	180.720	7300.40	3596.49	-3596.47	21.23	40°13'35.874"N	104°49'36.829"W	0.38	
11144.00	90.060	180.870	7300.53	3686.48	-3686.46	19.98	40°13'34.985"N	104°49'36.845"W	0.35	
11234.00	89.960	181.190	7300.51	3776.46	-3776.45	18.36	40°13'34.095"N	104°49'36.866"W	0.37	
11414.00	90.300	179.370	7300.11	3956.45	-3956.44	17.48	40°13'32.317"N	104°49'36.878"W	1.03	
11594.00	90.490	178.160	7298.86	4136.40	-4136.39	21.36	40°13'30.539"N	104°49'36.828"W	0.68	
11684.00	87.690	177.260	7300.29	4226.31	-4226.29	24.96	40°13'29.650"N	104°49'36.781"W	3.27	
11774.00	88.430	177.770	7303.34	4316.18	-4316.16	28.86	40°13'28.762"N	104°49'36.731"W	1.00	
11864.00	89.560	179.050	7304.92	4406.13	-4406.11	31.35	40°13'27.873"N	104°49'36.699"W	1.90	

11954.00	91.290	181.600	7304.25	4496.11	-4496.09	30.84	40°13'26.984"N	104°49'36.705"W	3.42	
12044.00	91.010	180.620	7302.45	4586.08	-4586.05	29.10	40°13'26.095"N	104°49'36.728"W	1.13	
12134.00	91.600	181.150	7300.40	4676.04	-4676.02	27.71	40°13'25.206"N	104°49'36.746"W	0.88	
12224.00	91.380	181.740	7298.06	4765.98	-4765.96	25.44	40°13'24.317"N	104°49'36.775"W	0.70	
12314.00	90.360	180.950	7296.69	4855.94	-4855.92	23.33	40°13'23.428"N	104°49'36.802"W	1.43	
12404.00	90.000	180.220	7296.41	4945.93	-4945.92	22.41	40°13'22.539"N	104°49'36.814"W	0.90	
12494.00	90.180	180.080	7296.26	5035.93	-5035.92	22.18	40°13'21.649"N	104°49'36.817"W	0.25	
12584.00	90.000	179.410	7296.12	5125.93	-5125.92	22.58	40°13'20.760"N	104°49'36.812"W	0.77	
12674.00	88.120	179.000	7297.60	5215.91	-5215.89	23.82	40°13'19.871"N	104°49'36.796"W	2.14	
12764.00	88.640	178.990	7300.14	5305.86	-5305.84	25.40	40°13'18.982"N	104°49'36.776"W	0.58	
12854.00	88.980	178.470	7302.01	5395.82	-5395.80	27.40	40°13'18.093"N	104°49'36.750"W	0.69	
12944.00	89.690	179.390	7303.06	5485.80	-5485.78	29.08	40°13'17.204"N	104°49'36.728"W	1.29	
13034.00	90.520	180.130	7302.89	5575.79	-5575.77	29.45	40°13'16.315"N	104°49'36.723"W	1.24	
13124.00	91.170	180.390	7301.57	5665.78	-5665.76	29.05	40°13'15.425"N	104°49'36.729"W	0.78	



Actual Wellpath Report

HENRICKSON 13C-18HZ AWP

Page 5 of 7



REFERENCE WELLPATH IDENTIFICATION

Operator	KERR-MCGEE OIL & GAS ONSHORE LP	Slot	SLOT#25 HENRICKSON 13C-18HZ (1736' FSL & 814' FWL, SEC.07)
Area	COLORADO	Well	HENRICKSON 13C-18HZ
Field	WELD COUNTY (KERR MCGEE)	Wellbore	HENRICKSON 13C-18HZ AWP
Facility	SEC.07-T3N-R66W		

WELLPATH DATA (145 stations)

MD [ft]	Inclination [°]	Azimuth [°]	TVD [ft]	Vert Sect [ft]	North [ft]	East [ft]	Latitude	Longitude	DLS [°/100ft]	Comments
13214.00	90.210	179.850	7300.48	5755.77	-5755.75	28.86	40°13'14.536"N	104°49'36.731"W	1.22	
13304.00	90.330	179.290	7300.06	5845.77	-5845.75	29.53	40°13'13.647"N	104°49'36.722"W	0.64	
13394.00	90.520	179.150	7299.39	5935.76	-5935.74	30.76	40°13'12.757"N	104°49'36.706"W	0.26	
13484.00	89.960	179.410	7299.01	6025.75	-6025.73	31.89	40°13'11.868"N	104°49'36.692"W	0.69	
13574.00	89.200	180.640	7299.67	6115.75	-6115.73	31.85	40°13'10.979"N	104°49'36.692"W	1.61	
13664.00	89.410	180.260	7300.76	6205.74	-6205.72	31.14	40°13'10.090"N	104°49'36.702"W	0.48	
13754.00	90.980	180.460	7300.46	6295.73	-6295.71	30.58	40°13'09.200"N	104°49'36.709"W	1.76	
13844.00	90.390	181.480	7299.38	6385.71	-6385.69	29.05	40°13'08.311"N	104°49'36.728"W	1.31	
13939.00	91.220	180.940	7298.05	6480.68	-6480.66	27.05	40°13'07.373"N	104°49'36.754"W	1.04	LAST BHI MWD+IFR SURVEY
13994.00	91.220	180.940	7296.88	6535.66	-6535.64	26.15	40°13'06.829"N	104°49'36.766"W	0.00	PROJECTION TO BIT

HOLE & CASING SECTIONS - Ref Wellbore: HENRICKSON 13C-18HZ AWP Ref Wellpath: HENRICKSON 13C-18HZ AWP

String/Diameter	Start MD [ft]	End MD [ft]	Interval [ft]	Start TVD [ft]	End TVD [ft]	Start N/S [ft]	Start E/W [ft]	End N/S [ft]	End E/W [ft]
13.5in Open Hole	13.00	1026.00	1013.00	13.00	1026.00	0.00	0.00	0.91	0.48
9.625in Casing Surface	13.00	1026.00	1013.00	13.00	1026.00	0.00	0.00	0.91	0.48
8.75in Open Hole	1026.00	7720.00	6694.00	1026.00	7312.09	0.91	0.48	-263.20	9.83
7in Casing Intermediate	13.00	7707.00	7694.00	13.00	7311.87	0.00	0.00	-250.22	9.07
6.125in Open Hole	7720.00	13994.00	6274.00	7312.09	7296.88	-263.20	9.83	-6535.64	26.15



Actual Wellpath Report

HENRICKSON 13C-18HZ AWP

Page 6 of 7



REFERENCE WELLPATH IDENTIFICATION

Operator	KERR-MCGEE OIL & GAS ONSHORE LP	Slot	SLOT#25 HENRICKSON 13C-18HZ (1736' FSL & 814' FWL, SEC.07)
Area	COLORADO	Well	HENRICKSON 13C-18HZ
Field	WELD COUNTY (KERR MCGEE)	Wellbore	HENRICKSON 13C-18HZ AWB
Facility	SEC.07-T3N-R66W		

TARGETS

Name	MD [ft]	TVD [ft]	North [ft]	East [ft]	Grid East [US ft]	Grid North [US ft]	Latitude	Longitude	Shape
SEC.07-T3N-R66W HARD LINES (460' SET BACKS)		4806.00	30.28	0.02	3187895.01	1329743.58	40°14'11.713"N	104°49'37.103"W	polygon
SEC.07-T3N-R66W SECTION LINES		4806.00	30.28	0.02	3187895.01	1329743.58	40°14'11.713"N	104°49'37.103"W	polygon
SEC.18-T3N-R66W HARD LINES (460' SET BACKS)		4806.00	30.28	0.02	3187895.01	1329743.58	40°14'11.713"N	104°49'37.103"W	polygon
SEC.18-T3N-R66W SECTION LINES		4806.00	-11554.66	2754.14	3190736.85	1318180.40	40°12'17.230"N	104°49'01.607"W	polygon
HENRICKSON 13C-18HZ LANDBOX		7076.00	30.28	0.02	3187895.01	1329743.58	40°14'11.713"N	104°49'37.103"W	polygon
HENRICKSON 13C-18HZ BHL (460' FSL & 825' FWL, SEC.18) REV-3		7291.00	-6560.30	13.15	3187958.15	1323153.59	40°13'06.586"N	104°49'36.934"W	point
HENRICKSON 13C-18HZ BHL ON PLAT (460' FSL & 700' FWL, SEC.18) REV-2		7291.00	-6560.30	-111.69	3187833.32	1323152.64	40°13'06.586"N	104°49'38.543"W	point
HENRICKSON 13C-18HZ BHL ON PLAT (460' FSL & 700' FWL, SEC.18) REV-1		7296.00	-6560.26	-111.71	3187833.31	1323152.68	40°13'06.586"N	104°49'38.543"W	point

WELLPATH COMPOSITION - Ref Wellbore: HENRICKSON 13C-18HZ AWB Ref Wellpath: HENRICKSON 13C-18HZ AWP

Start MD [ft]	End MD [ft]	Positional Uncertainty Model	Log Name/Comment	Wellbore
13.00	944.00	Generic gyro - continuous (Standard)	MS ENERGY SERVICES GYRO SURVEYS <113-944>	HENRICKSON 13C-18HZ AWB
944.00	7661.00	NaviTrak (MAGCORR,IFR)	BHI NAVITRAK MWD+IFR 8 3/4" <1273-7661>	HENRICKSON 13C-18HZ AWB
7661.00	13939.00	NaviTrak (MAGCORR,IFR)	BHI NAVITRAK MWD+IFR 6 1/8" <7729-13939>	HENRICKSON 13C-18HZ AWB
13939.00	13994.00	Blind Drilling (std)	Projection to bit	HENRICKSON 13C-18HZ AWB



Actual Wellpath Report

HENRICKSON 13C-18HZ AWP

Page 7 of 7



REFERENCE WELLPATH IDENTIFICATION

Operator	KERR-MCGEE OIL & GAS ONSHORE LP	Slot	SLOT#25 HENRICKSON 13C-18HZ (1736' FSL & 814' FWL, SEC.07)
Area	COLORADO	Well	HENRICKSON 13C-18HZ
Field	WELD COUNTY (KERR MCGEE)	Wellbore	HENRICKSON 13C-18HZ AWB
Facility	SEC.07-T3N-R66W		

WELLPATH COMMENTS

MD [ft]	Inclination [°]	Azimuth [°]	TVD [ft]	Comment
13.00	0.000	56.260	13.00	TIE ON
113.00	0.200	56.260	113.00	BEGIN GYRO SURVEYS
944.00	0.130	321.370	944.00	TIE ONTO GYRO SURVEYS
1273.00	0.590	150.080	1272.99	BEGIN BHI MWD+IFR SURVEYS
7707.00	88.782	176.734	7311.87	7" CASING POINT
13939.00	91.220	180.940	7298.05	LAST BHI MWD+IFR SURVEY
13994.00	91.220	180.940	7296.88	PROJECTION TO BIT