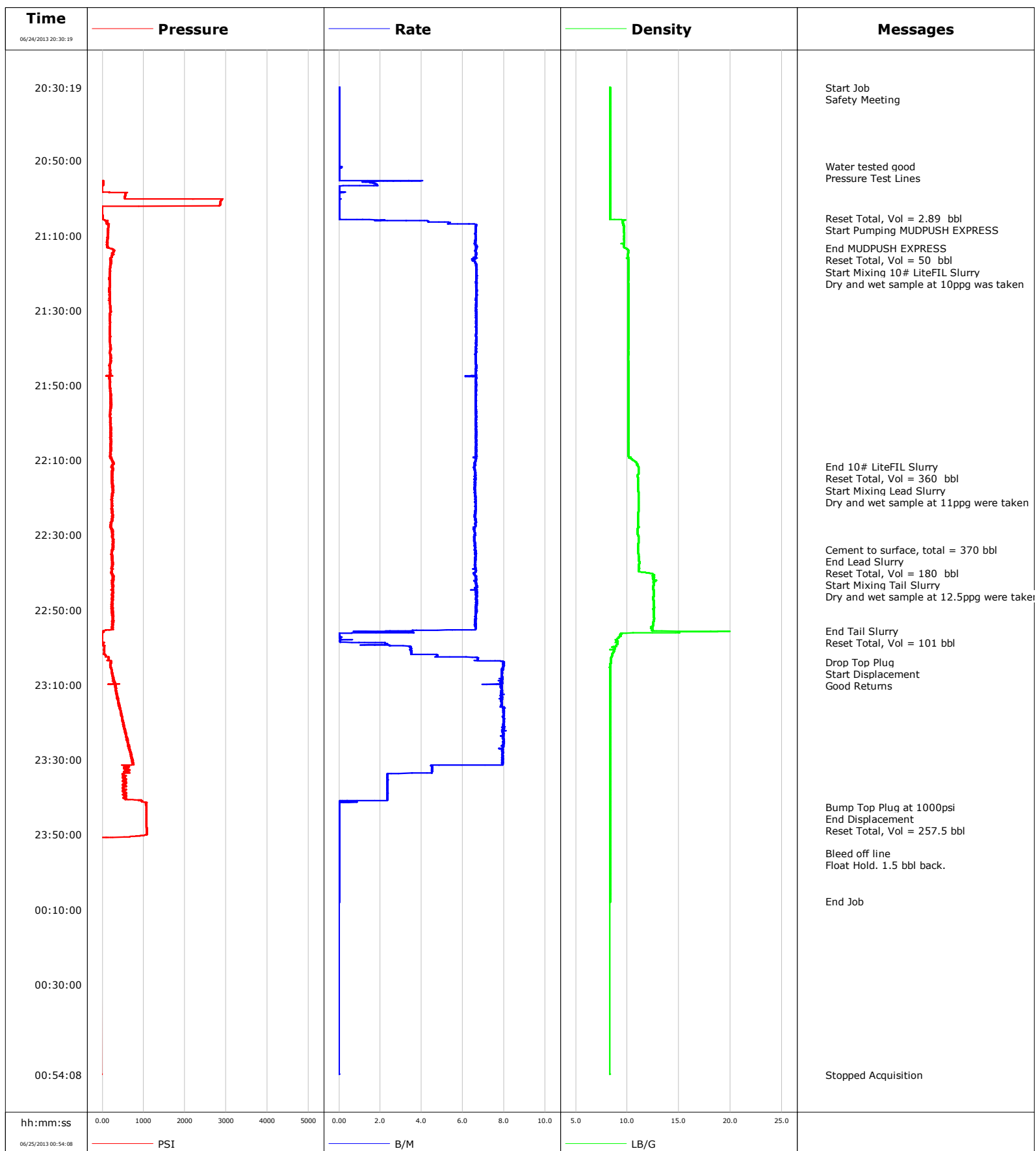


Well SGU 8502D-23 L24 496
Field Story Gulch
Engineer Dhierda Utiya
Country United States

Client Encana
SIR No. CAIO-00149
Job Type 9 5/8 Surface
Job Date 06-24-2013

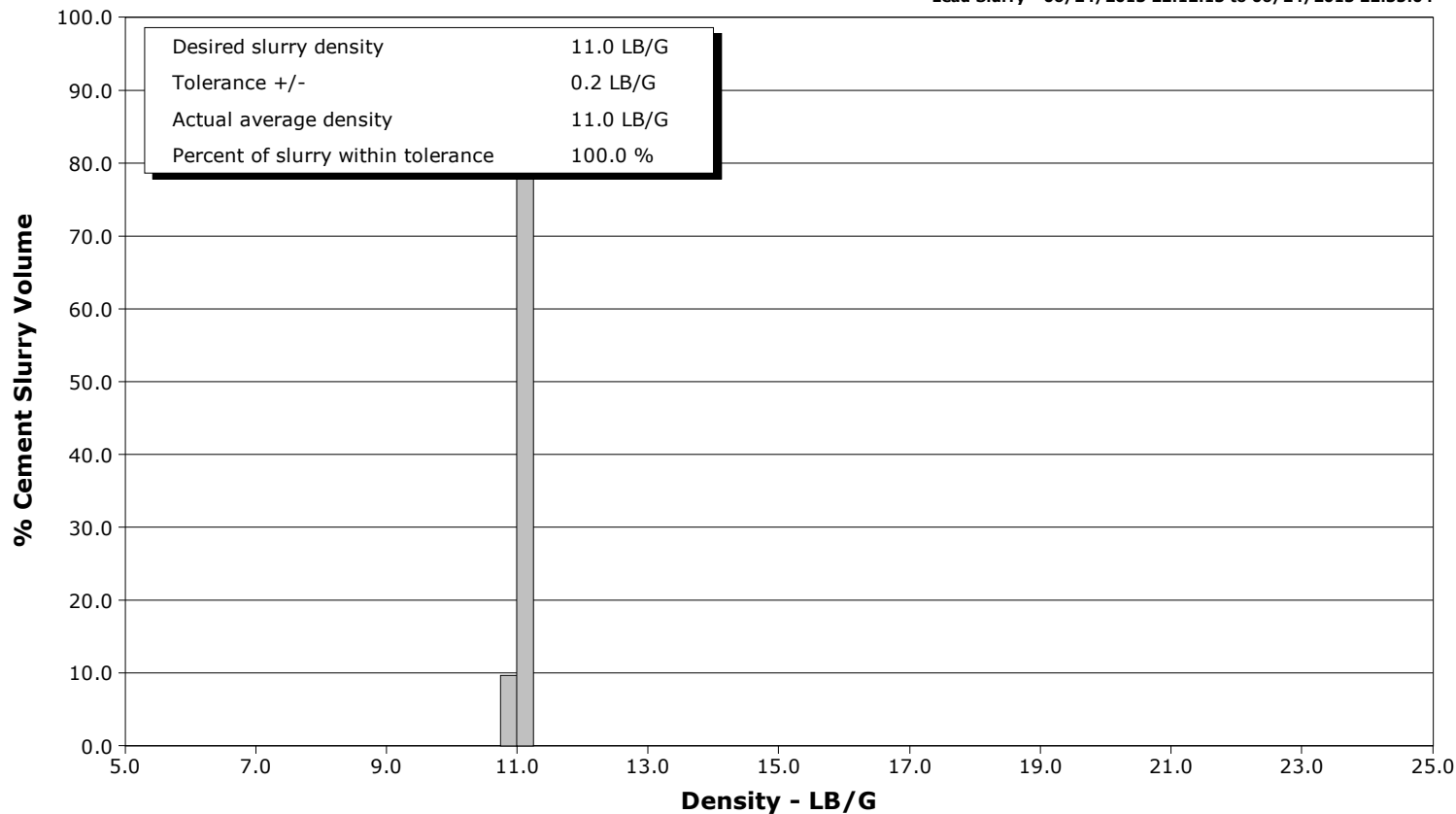


Schlumberger Cementing Qa/Qc Density Report

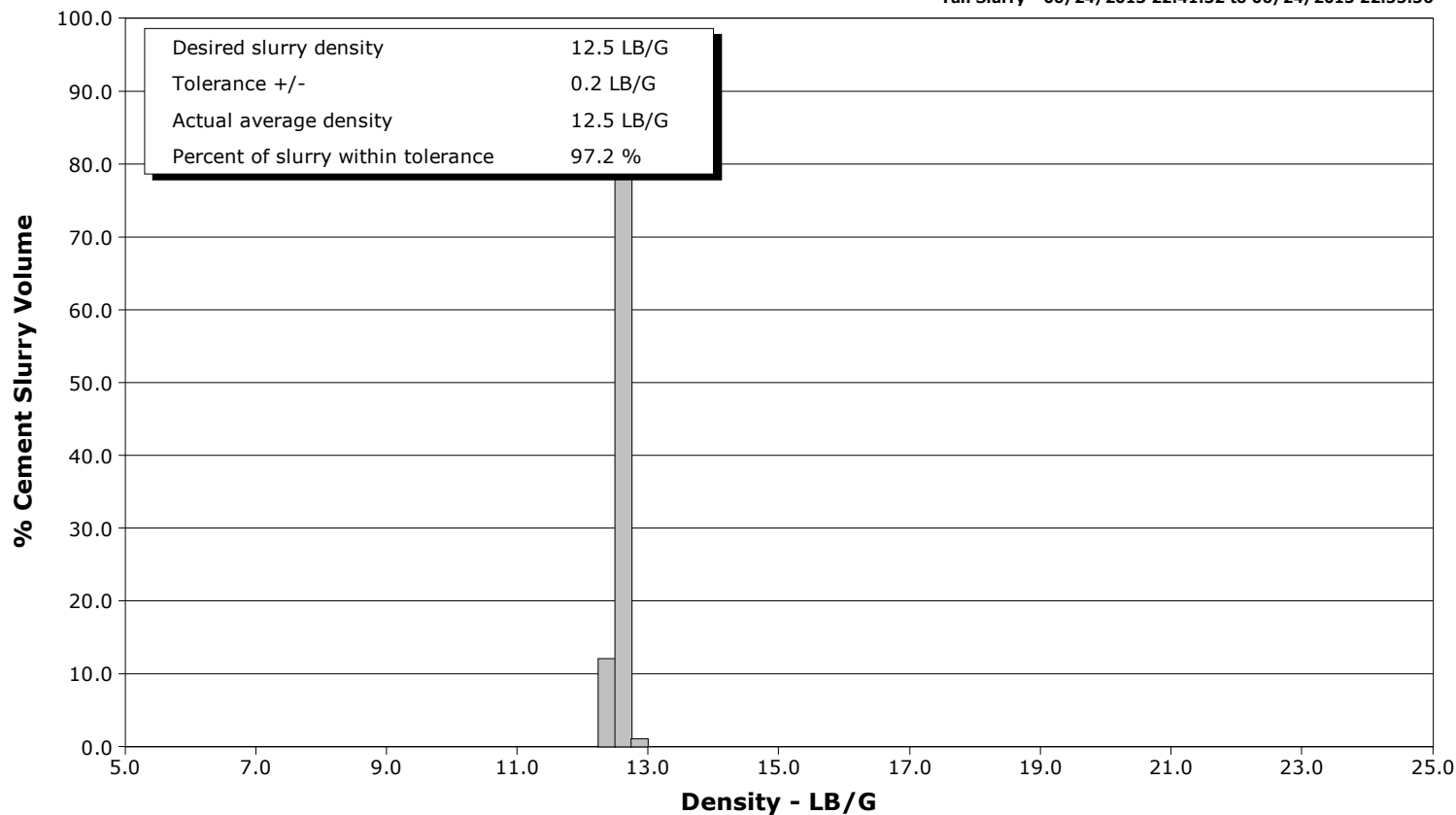
Well SGU 8502D-23 L24 496
Field Story Gulch
Engineer Dhierda Utiya
Country United States

Client Encana
SIR No. CAIO-00149
Job Type 9 5/8 Surface
Job Date 06-24-2013

Lead Slurry - 06/24/2013 22:12:13 to 06/24/2013 22:35:04



Tail Slurry - 06/24/2013 22:41:32 to 06/24/2013 22:55:36





Cementing Service Report

				Customer Encana		Job Number CAIO-00149			
Well SGU 8502D-23 L24 496 8502D-23 L24 496			Location (legal) Story Gulch		Schlumberger Location Rock Springs		Job Start Jun/24/2013		
Field Story Gulch		Formation Name/Type		Deviation	Bit Size 14.8 in	Well MD 3330.5 ft		Well TVD 3330.5 ft	
County Garfield		State/Province Colorado		BHP	BHST 125 degF	BHCT 97 degF	Pore Press. Gradient		
Well Master 0631465741		API/UWI							
Rig Name Patterson #330	Drilled For Gas	Service Via Land	Casing/Liner						
			Depth, ft	Size, in	Weight, lb/ft	Grade	Thread		
Offshore Zone	Well Class New	Well Type Development	3330.5	9.630	36.0	N/A		8RD	
			0.0	0.000	0.0				
Drilling Fluid Type		Max. Density	Plastic Viscosity	Tubing/Drill Pipe					
				Depth,	Size,	Weight,	Grade	Thread	
Service Line Cementing	Job Type 9 5/8 Surface								
Max. Allowed Tub. Press 3000 psi	Max. Allowed Ann. Press	WH Connection 9 5/8	Perforations/Open Hole						
Service Instructions 9 5/8 Surface			Top,	Bottom,			No. of Shots	Total Interval	
								Diameter	
			Treat Down Casing		Displacement 254.3 bbl		Packer Type		Packer Depth
			Tubing Vol.		Casing Vol. 258.7 bbl		Annular Vol. 421.3 bbl		Openhole Vol.
Casing/Tubing Secured <input checked="" type="checkbox"/>		1 Hole Vol. Circulated prior to Cement <input checked="" type="checkbox"/>		Casing Tools			Squeeze Job		
Lift Pressure 1650 psi			Shoe Type Float			Squeeze Type			
Pipe Rotated <input type="checkbox"/>		Pipe Reciprocated <input type="checkbox"/>		Shoe Depth 3330.5 ft			Tool Type		
No. Centralizers		Top Plugs 1	Bottom Plugs	Stage Tool Type			Tool Depth		
Cement Head Type Single				Stage Tool Depth			Tail Pipe Size		
Job Scheduled For Jun/24/2013 18:30		Arrived on Location Jun/24/2013 19:00	Leave Location Jun/25/2013 03:00	Collar Type Float			Tail Pipe Depth		
				Collar Depth 3285.1 ft			Sqz. Total Vol.		
Date	Time 24-hr clock	Treating Pressure PSI	Flow Rate B/M	Density LB/G	Volume BBL	Message			
06/24/2013	20:30:14					Started Acquisition			
06/24/2013	20:30:19	-34	0.0	8.32	0.0				
06/24/2013	20:30:21					Start Job			
06/24/2013	20:30:21	-34	0.0	8.32	0.0				
06/24/2013	20:30:23					Safety Meeting			
06/24/2013	20:30:23	-34	0.0	8.32	0.0				
06/24/2013	20:35:14	-34	0.0	8.32	0.0				
06/24/2013	20:40:14	-34	0.0	8.32	0.1				
06/24/2013	20:45:14	-34	0.0	8.32	0.1				
06/24/2013	20:50:14	-34	0.0	8.32	0.2				
06/24/2013	20:51:28					Water tested good			
06/24/2013	20:51:28	-34	0.0	8.32	0.2				
06/24/2013	20:51:31					Pressure Test Lines			
06/24/2013	20:51:31	-35	0.0	8.32	0.2				
06/24/2013	20:55:14	-38	0.0	8.32	0.3				
06/24/2013	21:00:14	2232	0.1	8.31	2.8				
06/24/2013	21:05:14	1	0.0	8.32	2.9				
06/24/2013	21:05:22					Reset Total, Vol = 2.89 bbl			
06/24/2013	21:05:22	-2	0.0	8.32	2.9				
06/24/2013	21:05:47					Start Pumping MUDPUSH EXPRESS			
06/24/2013	21:05:47	32	1.1	9.19	2.9				

Well SGU 8502D-23 L24 496 8502D-23 L24 496			Field Story Gulch	Job Start Jun/24/2013	Customer Encana	Job Number CAIO-00149
Date	Time 24-hr clock	Treating Pressure PSI	Flow Rate B/M	Density LB/G	Volume BBL	Message
06/24/2013	21:13:19					End MUDPUSH EXPRESS
06/24/2013	21:13:19	137	6.6	9.75	50.2	
06/24/2013	21:13:20					Reset Total, Vol = 50 bbl
06/24/2013	21:13:20	154	6.6	9.78	50.3	
06/24/2013	21:14:14					Start Mixing 10# LiteFIL Slurry
06/24/2013	21:14:14	290	6.6	10.09	56.2	
06/24/2013	21:15:14	231	6.6	10.03	62.9	
06/24/2013	21:16:22					Dry and wet sample at 10ppg was taken
06/24/2013	21:16:22	201	6.5	10.11	70.3	
06/24/2013	21:20:14	182	6.7	10.10	96.0	
06/24/2013	21:25:14	169	6.7	10.10	129.2	
06/24/2013	21:30:14	193	6.6	10.13	162.5	
06/24/2013	21:35:14	178	6.7	10.11	195.7	
06/24/2013	21:40:14	191	6.6	10.10	228.9	
06/24/2013	21:45:14	174	6.7	10.11	262.1	
06/24/2013	21:50:14	175	6.6	10.11	295.1	
06/24/2013	21:55:14	205	6.6	10.11	328.3	
06/24/2013	22:00:14	190	6.6	10.10	361.5	
06/24/2013	22:05:14	205	6.6	10.09	394.6	
06/24/2013	22:10:14	228	6.6	10.67	427.8	
06/24/2013	22:11:46					End 10# LiteFIL Slurry
06/24/2013	22:11:46	239	6.5	11.05	437.9	
06/24/2013	22:11:48					Reset Total, Vol = 360 bbl
06/24/2013	22:11:48	242	6.5	11.06	438.1	
06/24/2013	22:12:13					Start Mixing Lead Slurry
06/24/2013	22:12:13	254	6.5	11.08	440.8	
06/24/2013	22:12:39					Dry and wet sample at 11ppg were taken
06/24/2013	22:12:39	259	6.6	11.07	443.7	
06/24/2013	22:15:14	223	6.6	11.02	460.7	
06/24/2013	22:20:14	230	6.6	11.06	493.6	
06/24/2013	22:25:14	258	6.6	11.02	526.7	
06/24/2013	22:30:14	246	6.6	11.07	559.6	
06/24/2013	22:33:57					Cement to surface, total = 370 bbl
06/24/2013	22:33:57	238	6.6	11.03	584.0	
06/24/2013	22:35:04					End Lead Slurry
06/24/2013	22:35:04	206	6.6	11.05	591.4	
06/24/2013	22:35:14	234	6.6	11.05	592.5	
06/24/2013	22:40:07					Reset Total, Vol = 180 bbl
06/24/2013	22:40:07	205	6.5	11.95	624.7	
06/24/2013	22:40:14	218	6.5	12.22	625.5	
06/24/2013	22:41:32					Start Mixing Tail Slurry
06/24/2013	22:41:32	271	6.6	12.47	634.1	
06/24/2013	22:42:01					Dry and wet sample at 12.5ppg were taken
06/24/2013	22:42:01	261	6.7	12.50	637.3	
06/24/2013	22:45:14	252	6.7	12.53	658.6	
06/24/2013	22:50:14	253	6.6	12.54	691.9	
06/24/2013	22:55:14	253	6.6	12.42	725.0	
06/24/2013	22:55:36					End Tail Slurry
06/24/2013	22:55:36	43	3.5	12.44	726.8	
06/24/2013	22:56:37					Reset Total, Vol = 101 bbl
06/24/2013	22:56:37	-15	0.0	9.30	728.5	
06/24/2013	23:00:14	41	3.5	8.78	732.6	
06/24/2013	23:03:51					Drop Top Plug
06/24/2013	23:03:51	214	8.0	8.41	750.3	

Well			Field		Job Start		Customer		Job Number	
SGU 8502D-23 L24 496 8502D-23 L24 496			Story Gulch		Jun/24/2013		Encana		CAIO-00149	
Date	Time 24-hr clock	Treating Pressure PSI	Flow Rate B/M	Density LB/G	Volume BBL	Message				
06/24/2013	23:03:52	208	8.0	8.41	750.4					
06/24/2013	23:04:22					Good Returns				
06/24/2013	23:04:22	197	8.0	8.34	754.4					
06/24/2013	23:05:14	196	8.0	8.35	761.3					
06/24/2013	23:10:14	315	7.9	8.32	800.7					
06/24/2013	23:15:14	397	7.9	8.32	840.1					
06/24/2013	23:20:14	501	8.0	8.32	879.9					
06/24/2013	23:25:14	622	8.0	8.32	919.7					
06/24/2013	23:30:14	739	7.9	8.32	959.3					
06/24/2013	23:35:14	576	2.3	8.31	982.9					
06/24/2013	23:40:14	506	2.3	8.31	994.7					
06/24/2013	23:42:40					Bump Top Plug at 1000psi				
06/24/2013	23:42:40	1061	0.0	8.32	996.5					
06/24/2013	23:42:41					End Displacement				
06/24/2013	23:42:41	1061	0.0	8.31	996.5					
06/24/2013	23:42:42					Reset Total, Vol = 257.5 bbl				
06/24/2013	23:42:42	1062	0.0	8.31	996.5					
06/24/2013	23:45:14	1064	0.0	8.32	996.6					
06/24/2013	23:50:14	1033	0.0	8.32	996.6					
06/24/2013	23:55:00					Bleed off line				
06/24/2013	23:55:00	-32	0.0	8.32	996.7					
06/24/2013	23:55:14	-33	0.0	8.32	996.7					
06/24/2013	23:56:00					Float Hold. 1.5 bbl back.				
06/24/2013	23:56:00	-33	0.0	8.31	996.7					
06/25/2013	00:00:14	-33	0.0	8.31	996.8					
06/25/2013	00:05:14	-31	0.0	8.31	996.8					
06/25/2013	00:07:47					End Job				
06/25/2013	00:07:47	-31	0.0	8.32	996.9					
06/25/2013	00:54:08	-11	0.0	8.32	996.9					

Post Job Summary

Average Pump Rates, bbl/min					Volume of Fluid Injected, bbl				
Slurry 4.2	N2	Mud 0.0	Maximum Rate 8.1	Total Slurry 641.0	Mud 0.0	Spacer 50.0	N2		
Treating Pressure Summary, psi					Breakdown Fluid				
Maximum 2921	Final 23	Average 343	Bump Plug to 1000	Breakdown	Type	Volume	Density		
Avg. N2 Percent		Designed Slurry Volume 614.0 bbl	Displacement 257.5 bbl	Mix Water Temp 60 degF	Cement Circulated to Surface? <input checked="" type="checkbox"/>		Volume 370.0 bbl		
					Washed Thru Perfs <input type="checkbox"/>		To		
Customer or Authorized Representative Encana			Schlumberger Supervisor Dhierda Utiya			Circulation Lost <input type="checkbox"/>	Job Completed <input checked="" type="checkbox"/>		
						-	-		