

**ANADARKO PETROLEUM CORP - EBUS
DO NOT MAIL - PO BOX 4995
THE WOODLANDS, Texas**

USA Fed 04N-36HZ

Xtreme 8

Post Job Summary **Cement Surface Casing**

Prepared for:
Date Prepared: 10/4/2013
Version: 1

Service Supervisor: BULINSKI, MATTHEW

Submitted by: FINNEY, SEAN

HALLIBURTON

Wellbore Geometry

Job Tubulars					MD		Shoe Joint Length ft
Type	Description	Size in	ID in	Wt lbm/ft	Top ft	Bottom ft	
Casing	9 5/8" Surface Casing	9.63	8.921	36.00	0.00	937.00	42.00
Open Hole Section	13 1/2" Open Hole Section		13.500		0.00	947.00	0.00

HALLIBURTON

Pumping Schedule

Stage /Plug #	Fluid #	Fluid Type	Fluid Name	Surface Density lbm/gal	Avg Rate bbl/min	Surface Volume	Downhole Volume
1	1	Spacer	Fresh Water Spacer	8.33	3.50	10.0 bbl	10.0 bbl
1	2	Spacer	Mud Flush	8.40	4.00	12.0 bbl	12.0 bbl
1	3	Cement Slurry	SwiftCem B2	14.20	5.00	360.0 sacks	360.0 sacks

Fluids Pumped

Stage/Plug # 1 Fluid 1: Fresh Water Spacer
DUMMY MUD / FLUSH / SPACER SBC MATERIAL

Fluid Density: 8.33 lbm/gal
Fluid Volume: 10.00 bbl
Pump Rate: 3.50 bbl/min

Stage/Plug # 1 Fluid 2: Mud Flush
DUMMY MUD / FLUSH / SPACER SBC MATERIAL
42 gal/bbl Mud Flush III
3.5 lbm/bbl Mud Flush III

Fluid Density: 8.40 lbm/gal
Fluid Volume: 12.00 bbl
Pump Rate: 4.00 bbl/min

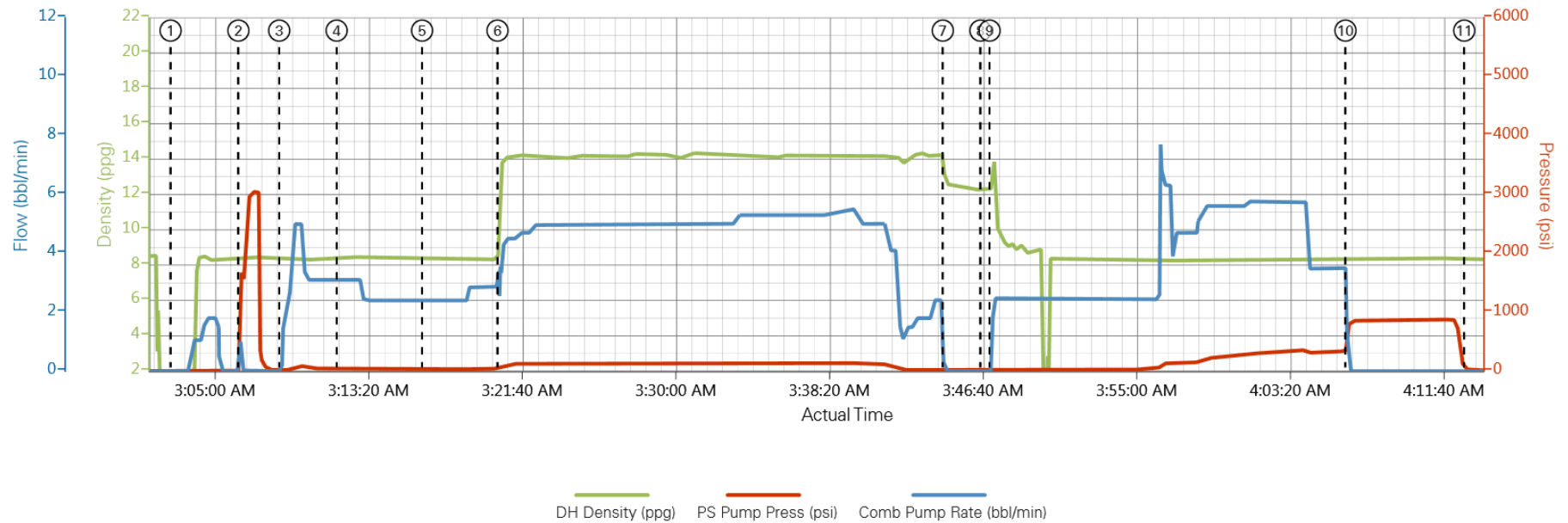
Stage/Plug # 1 Fluid 3: SwiftCem B2
SWIFTCM (TM) SYSTEM

Fluid Weight: 14.20 lbm/gal
Slurry Yield: 1.54 ft³/sack
Total Mixing Fluid: 7.66 Gal
Surface Volume: 360.0 sacks
Sacks: 360.0 sacks
Calculated Fill: 900.00 ft
Calculated Top of Fluid: 0.00 ft

HALLIBURTON

Data Acquisition

9-21-13 Anadarko Surface 04N-36HZ



- ① Start Job
- ② Test Lines
- ③ Pump Spacer 1
- ④ Pump Spacer 2
- ⑤ Pump Spacer 1
- ⑥ Pump Cement
- ⑦ Shutdown
- ⑧ Drop Top Plug
- ⑨ Pump Displacement
- ⑩ Bump Plug
- ⑪ End Job

▲ Halliburton | iCem Service®

Created: 2013-09-21 02:38:59 , Version: 1.4.96

Edit

HALLIBURTON

Service Supervisor Reports

Job Log

Date/Time	Chart #	Activity Code	Pump Rate	Cum Vol	Pump		Pressure (psig)		Comments
09/20/2013 21:00		Arrive at Location from Service Center							Arrived 1hr early and rig is still tripping out DP
09/20/2013 21:30		Assessment Of Location Safety Meeting							Hazard hunt on Location before spotting in trucks
09/21/2013 01:00		Safety Meeting - Pre Rig-Up							JSA on rigging up Bulk trucks and Iron to rig
09/21/2013 02:00		Rig-Up Equipment							
09/21/2013 02:36		Rig-Up Completed							
09/21/2013 02:45		Safety Meeting - Pre Job							JSA with Company Man, Rig hands, and HES hands on pump schedule
09/21/2013 03:02		Start Job							
09/21/2013 03:06		Test Lines							3000psi Pressure Test Lines to Rig Floor
09/21/2013 03:08		Pump Spacer 1	3.5	10				45.0	10bbls H2O spacer
09/21/2013 03:11		Pump Spacer 2	4	12				60.0	12bbls Mud Flush spacer
09/21/2013 03:16		Pump Spacer 1	5	10				70.0	10bbls H2O spacer
09/21/2013 03:20		Pump Cement	5	98.7				135.0	360sks Swiftcem, 14.2ppg, 1.54yield, 7.66gal/sk, Mixed with rig water and # verify by pressurized mud scales
09/21/2013 03:44		Shutdown							
09/21/2013 03:46		Drop Top Plug							Pre-Loaded
09/21/2013 03:47		Pump Displacement	5.5	69				320.0	H2O displacement, Good returns throughout... 12bbls Cmt Back to Surface
09/21/2013 04:06		Bump Plug	3						Slowed down last 20bbls to 3bbl/min to Bump... Plug landed at 347psi and brought to 863psi for 5mins
09/21/2013 04:12		Check Floats							Floats Held
09/21/2013 04:12		End Job							
09/21/2013 04:13		Safety Meeting - Pre Rig-Down							JSA on rigging down bulk trucks and iron from rig
09/21/2013 04:15		Rig-Down Equipment							
09/21/2013 05:00		Rig-Down Completed							
09/21/2013 05:15		Safety Meeting - Departing Location							JSA on pre-tripping trucks and driving back to Brighton Yard

The Road to Excellence Starts with Safety

Sold To #: 300466		Ship To #: 3106875		Quote #:		Sales Order #: 900758459					
Customer: ANADARKO PETROLEUM CORP - EBUS				Customer Rep: Bell, Duaine							
Well Name: USA Fed			Well #: 04N-36HZ		API/UWI #: 05-123-36896						
Field:		City (SAP): PLATTEVILLE		County/Parish: Weld		State: Colorado					
Lat: N 40.177 deg. OR N 40 deg. 10 min. 36.296 secs.				Long: W 104.733 deg. OR W -105 deg. 16 min. 1.643 secs.							
Job Purpose: Cement Surface Casing											
Well Type: Development Well				Job Type: Cement Surface Casing							
Sales Person: PLIENESS, RYAN			Srvc Supervisor: BULINSKI, MATTHEW			MBU ID Emp #: 483865					
Job Personnel											
HES Emp Name		Exp Hrs	Emp #	HES Emp Name		Exp Hrs	Emp #				
BULINSKI, MATTHEW J		0.0	483865	CARPENTER, JACOB P		0.0	499500				
VIATOR, JASON R.		0.0	550394								
Equipment											
HES Unit #	Distance-1 way	HES Unit #	Distance-1 way	HES Unit #	Distance-1 way	HES Unit #	Distance-1 way				
11338223	15 mile	11410470C	15 mile	11605598	15 mile	11764052	15 mile				
Job Hours											
Date	On Location Hours	Operating Hours	Date	On Location Hours	Operating Hours	Date	On Location Hours				
TOTAL			Total is the sum of each column separately								
Job				Job Times							
Formation Name				Date							
Formation Depth (MD) Top Bottom				Time							
Form Type				Time Zone							
Job depth MD 947. ft				Called Out 20 - Sep - 2013 17:30 MST							
Water Depth				On Location 20 - Sep - 2013 21:00 MST							
Perforation Depth (MD) From To				Job Started 21 - Sep - 2013 03:02 MST							
				Job Completed 21 - Sep - 2013 04:12 MST							
				Departed Loc 21 - Sep - 2013 05:30 MST							
Well Data											
Description	New / Used	Max pressure psig	Size in	ID in	Weight lbm/ft	Thread	Grade	Top MD ft	Bottom MD ft	Top TVD ft	Bottom TVD ft
13 1/2" Open Hole Section				13.5				.	947.		
9 5/8" Surface Casing	Unknown		9.625	8.921	36.		J-55	.	937.		
Sales/Rental/3rd Party (HES)											
Description						Qty	Qty uom	Depth	Supplier		
CMT CASING EQUIPMENT BOM						1	JOB				
MILEAGE FOR CEMENTING CREW,ZI						30	MI				
ZI FUEL SURCHG-CARS/PICKUPS<1 1/2TON						30	MI				
KIT,HALL WELD-A						1	EA				
CNTRLZR, 9 5/8x13 3/4,#500-0963-1375						7	EA				
PLUG,CMTG,TOP,9 5/8,HWE,8.16 MIN/9.06 MA						1	EA				
Description						Qty	Qty uom	Depth	Supplier		

COLLAR-STOP-9 5/8"-FRICTION-HINGED					2	EA			
BASKET - CEMENT - 9-5/8 CSG X 12-1/4					1	EA			
Fluid Data									
Stage/Plug #: 1									
Fluid #	Stage Type	Fluid Name	Qty	Qty uom	Mixing Density lbm/gal	Yield ft ³ /sk	Mix Fluid Gal/sk	Rate bbl/min	Total Mix Fluid Gal/sk
1	Fresh Water Spacer		10.00	bbl	8.33	.0	.0	3.5	
2	Mud Flush		12.00	bbl	8.4	.0	.0	4.0	
42 gal/bbl		MUD FLUSH III - SBM (528788)							
3.5 lbm/bbl		MUD FLUSH III, 40 LB SACK (101633304)							
3	SwiftCem B2	SWIFTCM (TM) SYSTEM (452990)	360.0	sacks	14.2	1.54	7.66	5.0	7.66
7.66 Gal		FRESH WATER							
Calculated Values		Pressures		Volumes					
Displacement		Shut In: Instant		Lost Returns		Cement Slurry		Pad	
Top Of Cement		5 Min		Cement Returns		Actual Displacement		Treatment	
Frac Gradient		15 Min		Spacers		Load and Breakdown		Total Job	
Rates									
Circulating		Mixing		Displacement		Avg. Job			
Cement Left In Pipe	Amount	42 ft	Reason	Shoe Joint					
Frac Ring # 1 @	ID	Frac ring # 2 @	ID	Frac Ring # 3 @	ID	Frac Ring # 4 @	ID		
The Information Stated Herein Is Correct				Customer Representative Signature					

