

#### WELL LOCATION DATA:

LATITUDE: 40.43553°N  
 LONGITUDE: 104.68427°W  
 ELEVATION: 4641'  
 PDOP: 1.0  
 OPERATOR: D. BERGLUND  
 SURFACE USE: INDUSTRIAL  
 PROPOSED GROUND ELEVATION: 4640.9'

#### BEGIN COMPLETION ZONE:

LATITUDE: 40.43094°N  
 LONGITUDE: 104.68882°W

#### END COMPLETION ZONE:

LATITUDE: 40.43188°N  
 LONGITUDE: 104.71424°W

REVISIONS	0	1
	10/7/13	12/12/13
FIRST SUBMITTAL	●	
SECOND SUBMITTAL		●

#### NOTES:

DISTANCES ARE MEASURED PERPENDICULAR TO NEAREST SECTION LINE AND ARE SHOWN ON THE SAME SIDE OF THE SECTION LINE WHERE THE WELL IS LOCATED.

THIS MAP DOES NOT REPRESENT A MONUMENTED BOUNDARY SURVEY.

#### BASIS OF BEARING:

THE NORTH LINE OF THE NORTHEAST QUARTER OF SECTION 5-T5N-R65W BEARS S85°52'57"E BETWEEN THE NORTH QUARTER CORNER OF SECTION 5 MONUMENTED WITH 3 1/4" A.C. IN R.B. STAMPED "PLS 28259" AND THE NORTHEAST CORNER OF SECTION 5 MONUMENTED WITH A 2 1/2" A.C. IN R.B. STAMPED "LS 17500" BASED ON THE COLORADO NORTH 0501 STATE PLANE COORDINATE SYSTEM.

ELEVATIONS ARE BASED ON NAVD 88, AS OBSERVED FROM GPS OBSERVATIONS

#### LEGEND

- COMPUTED FROM GLO RECORDS
- ALIQUOT CORNER
- ▲ A.C. ALUMINUM CAP
- ⊙ BOTTOM HOLE
- R.B. RANGE BOX
- ⊙ PROPOSED WELL
- WELLBORE INFLECTION

#### LAND SURVEYOR'S CERTIFICATION

LAMP, RYNEARSON & ASSOCIATES, INC., OF FT. COLLINS, COLORADO HAS, IN ACCORDANCE WITH A REQUEST FROM COLLIN RICHARDSON FOR MINERAL RESOURCES, INC., DETERMINED THE SURFACE LOCATION OF THE WELL DESIGNATED AS DT-HABITAT 5-5-6 TO BE 363' FROM THE NORTH LINE AND 1834' FROM THE EAST LINE OF SECTION 5, TOWNSHIP 5 NORTH, RANGE 65 WEST OF THE 6TH P.M., WELD COUNTY, COLORADO.



DAVID JOHN BERGLUND  
 COLORADO PLS 38199  
 DATE OF SURVEY: 8/19/2010 (SECTION CONTROL)  
 DATE OF SURVEY: 11/11/2012 (WELL LOCATION)

0 500 1000 2000  
 1"=1000' US SURVEY FEET

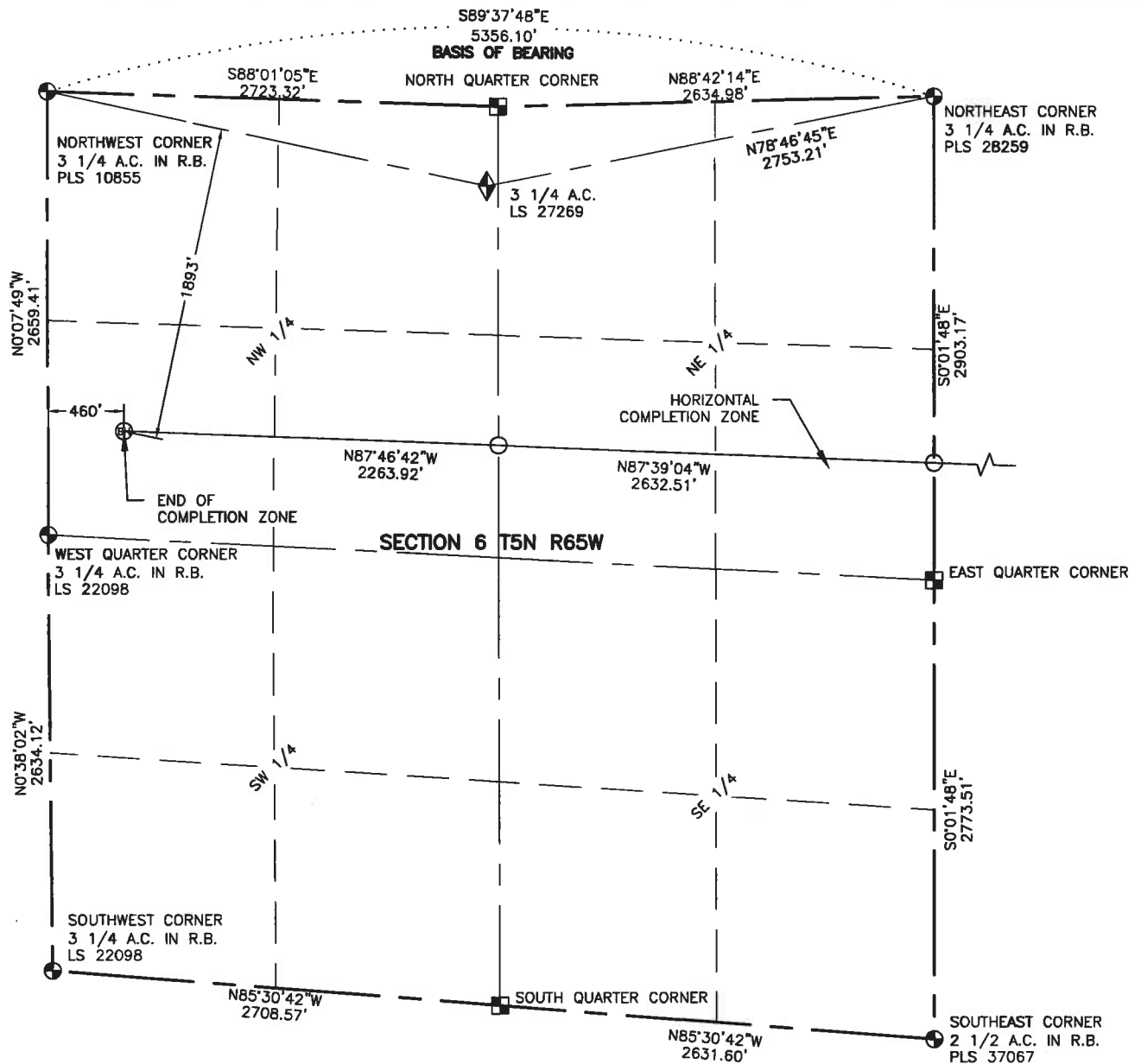


**LAMP RYNEARSON**  
 & ASSOCIATES

4715 Innovation Drive 970.226.0342 | P  
 Fort Collins, CO 80525 970.226.0879 | F  
 www.LRA-Inc.com

Proposed Well Location Exhibit  
 DT-Habitat 5-5-6  
 1 of 2

drawn by JJM	date 12/12/13	cogcc id	project - task number 0211012.02-502	book and page MRI02, 1	surface - location NW/4 NE/4 SEC 5 T5N R65W
path\filename P:\_Engineering\0211012.02\DRAWINGS\EXHIBITS\0211012-02EXWPJ.dwg					



#### NOTES:

DISTANCES ARE MEASURED PERPENDICULAR TO NEAREST SECTION LINE AND ARE SHOWN ON THE SAME SIDE OF THE SECTION LINE WHERE THE WELL IS LOCATED.

THIS MAP DOES NOT REPRESENT A MONUMENTED BOUNDARY SURVEY.

#### BASIS OF BEARING:

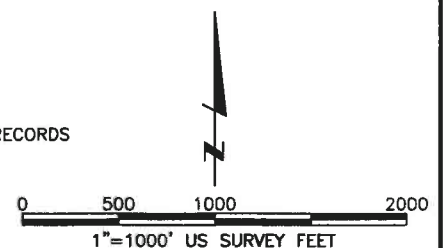
A LINE BETWEEN THE NORTHWEST AND NORTHEAST CORNERS OF SECTION 6-T5N-R65W AND BEARS S89°37'48"E BETWEEN THE NORTHWEST CORNER OF SAID SECTION 6 MONUMENTED WITH A 3 1/4" A.C. STAMPED "LS 10855" AND THE NORTHEAST CORNER OF SECTION 6 MONUMENTED WITH A 3 1/4" A.C. IN R.B. STAMPED "PLS 28259" BASED ON THE COLORADO NORTH 0501 STATE PLANE COORDINATE SYSTEM.

ELEVATIONS ARE BASED ON NAVD 88, AS OBSERVED FROM GPS OBSERVATIONS

#### LEGEND

- ◆ UNION COLONY CORNER
- ⊙ ALIQUOT CORNER
- ⊙ BOTTOM HOLE
- ⊙ COMPUTED FROM GLO RECORDS
- A.C. ALUMINUM CAP
- R.B. RANGE BOX

REVISIONS	0	1
	10/7/13	12/12/13
FIRST SUBMITTAL	●	
SECOND SUBMITTAL		●



**LAMP RYNEARSON**  
& ASSOCIATES

4715 Innovation Drive 970.226.0342 | P  
Fort Collins, CO 80525 970.226.0879 | F  
www.LRA-Inc.com

Proposed Well Location Exhibit  
DT-Habitat 5-5-6  
2 of 2

drawn by  
JJM

date  
12/12/13

cogcc id

project - task number  
0211012.02-502

book and page  
MRI02, 1

surface - location  
NW/4 NE/4 SEC 5 T5N R65W

path\filename P:\Engineering\0211012.02\DRAWINGS\EXHIBITS\0211012-02EXWPJA.dwg