

WELL LOCATION DATA:

LATITUDE: 40.43562°N
 LONGITUDE: 104.68427°W
 ELEVATION: 4641'
 PDOP: 1.0
 OPERATOR: D. BERGLUND
 SURFACE USE: INDUSTRIAL
 PROPOSED GROUND ELEVATION: 4641.0'

BEGIN COMPLETION ZONE:

LATITUDE: 40.43288°N
 LONGITUDE: 104.68878°W

END COMPLETION ZONE:

LATITUDE: 40.43365°N
 LONGITUDE: 104.71422°W

REVISIONS	0	1
	10/7/13	12/12/13
FIRST SUBMITTAL	●	
SECOND SUBMITTAL		●

NOTES:

DISTANCES ARE MEASURED PERPENDICULAR TO NEAREST SECTION LINE AND ARE SHOWN ON THE SAME SIDE OF THE SECTION LINE WHERE THE WELL IS LOCATED.

THIS MAP DOES NOT REPRESENT A MONUMENTED BOUNDARY SURVEY.

BASIS OF BEARING:

THE NORTH LINE OF THE NORTHEAST QUARTER OF SECTION 5-T5N-R65W BEARS S85°52'57"E BETWEEN THE NORTH QUARTER CORNER OF SECTION 5 MONUMENTED WITH 3 1/4" A.C. IN R.B. STAMPED "PLS 28259" AND THE NORTHEAST CORNER OF SECTION 5 MONUMENTED WITH A 2 1/2" A.C. IN R.B. STAMPED "LS 17500" BASED ON THE COLORADO NORTH 0501 STATE PLANE COORDINATE SYSTEM.

ELEVATIONS ARE BASED ON NAVD 88, AS OBSERVED FROM GPS OBSERVATIONS

LEGEND

- COMPUTED FROM GLO RECORDS
- ALIQUOT CORNER
- A.C. ALUMINUM CAP
- ⊙ BOTTOM HOLE
- R.B. RANGE BOX
- ⊙ PROPOSED WELL
- WELLBORE INFLECTION

LAND SURVEYOR'S CERTIFICATION

LAMP, RYNEARSON & ASSOCIATES, INC., OF FT. COLLINS, COLORADO HAS, IN ACCORDANCE WITH A REQUEST FROM COLLIN RICHARDSON FOR MINERAL RESOURCES, INC., DETERMINED THE SURFACE LOCATION OF THE WELL DESIGNATED AS DT-HABITAT 3-5-6 TO BE 331' FROM THE NORTH LINE AND 1835' FROM THE EAST LINE OF SECTION 5, TOWNSHIP 5 NORTH, RANGE 65 WEST OF THE 6TH P.M., WELD COUNTY, COLORADO.



DAVID JOHN BERGLUND
 COLORADO PLS 38199

DATE OF SURVEY: 8/19/2010 (SECTION CONTROL)

DATE OF SURVEY: 11/12/2012 (WELL LOCATION)

0 500 1000 2000
 1"=1000' US SURVEY FEET



LAMP RYNEARSON
 & ASSOCIATES

4715 Innovation Drive 970.226.0342 | P
 Fort Collins, CO 80525 970.226.0879 | F
 www.LRA-Inc.com

Proposed Well Location Exhibit
 DT-Habitat 3-5-6
 1 of 2

drawn by
 JJM

date
 12/12/13

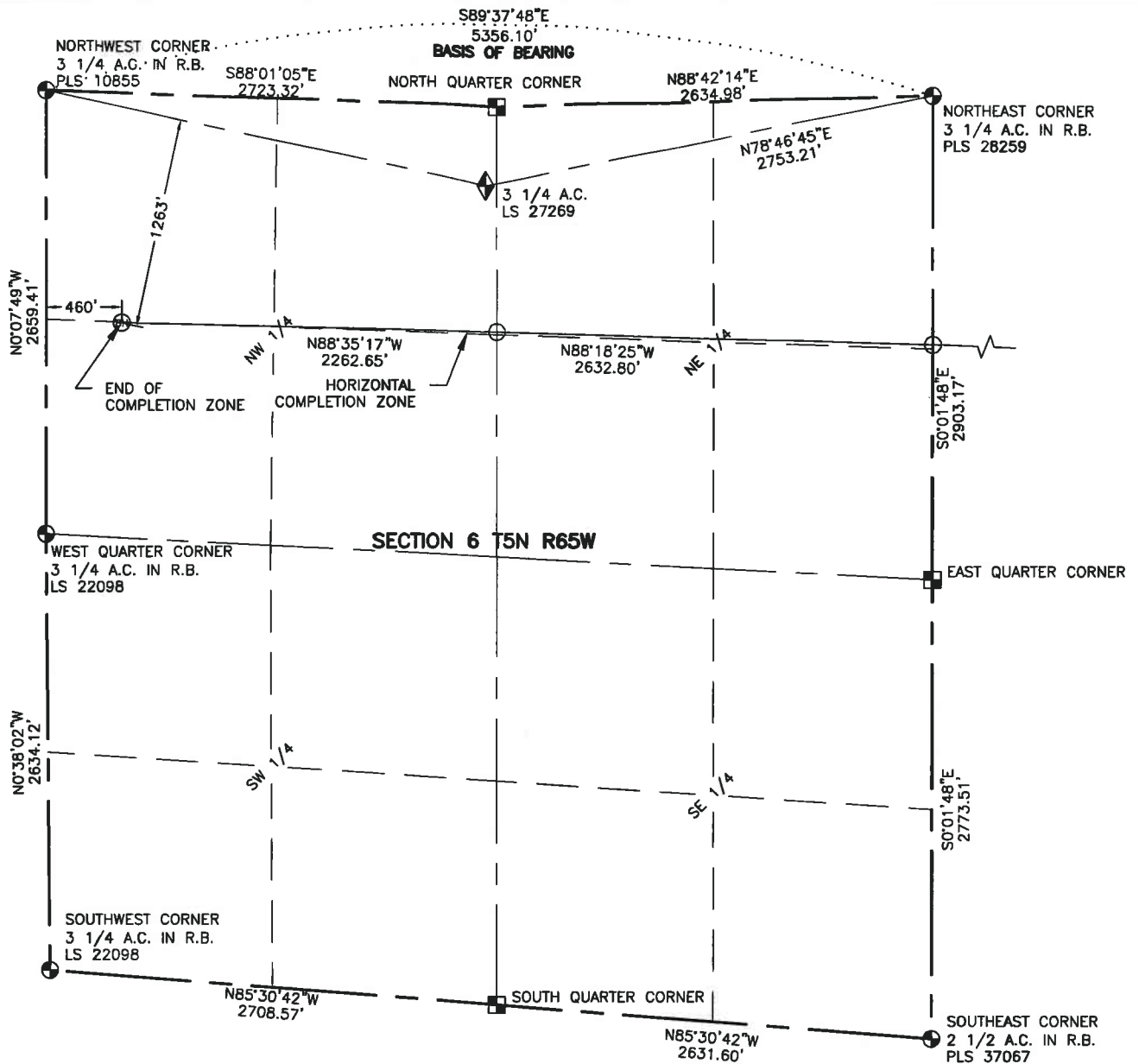
cogcc id

project - task number
 0211012.02-502

book and page
 MRI02, 1

path\filename P:\Engineering\0211012.02\DRAWINGS\EXHIBITS\0211012-02EXWPH.dwg

surface - location
 NW/4 NE/4 SEC 5 T5N R65W



NOTES:

DISTANCES ARE MEASURED PERPENDICULAR TO NEAREST SECTION LINE AND ARE SHOWN ON THE SAME SIDE OF THE SECTION LINE WHERE THE WELL IS LOCATED.

THIS MAP DOES NOT REPRESENT A MONUMENTED BOUNDARY SURVEY.

BASIS OF BEARING:

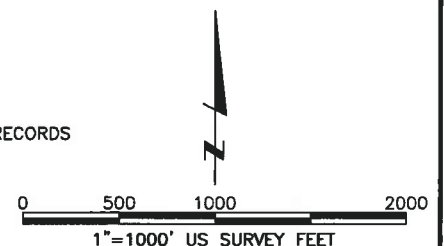
A LINE BETWEEN THE NORTHWEST AND NORTHEAST CORNERS OF SECTION 6-T5N-R65W AND BEARS S89°37'48"E BETWEEN THE NORTHWEST CORNER OF SAID SECTION 6 MONUMENTED WITH A 3 1/4" A.C. STAMPED "LS 10855" AND THE NORTHEAST CORNER OF SECTION 6 MONUMENTED WITH A 3 1/4" A.C. IN R.B. STAMPED "PLS 28259" BASED ON THE COLORADO NORTH 0501 STATE PLANE COORDINATE SYSTEM.

ELEVATIONS ARE BASED ON NAVD 88, AS OBSERVED FROM GPS OBSERVATIONS

LEGEND

- ◆ UNION COLONY CORNER
- ⊙ ALIQUOT CORNER
- ⊙ BOTTOM HOLE
- ⊙ COMPUTED FROM GLO RECORDS
- A.C. ALUMINUM CAP
- R.B. RANGE BOX

REVISIONS	0	1
	10/7/13	12/12/13
FIRST SUBMITTAL	●	
SECOND SUBMITTAL		●



LAMP RYNEARSON
& ASSOCIATES

4715 Innovation Drive 970.226.0342 | P
Fort Collins, CO 80525 970.226.0879 | F
www.LRA-Inc.com

Proposed Well Location Exhibit
DT-Habitat 3-5-6
2 of 2

drawn by

JJM

date

12/12/13

cogcc id

project - task number

0211012.02-502

book and page

MRI02, 1

surface - location

NW/4 NE/4 SEC 5 T5N R65W

path\filename P:\Engineering\0211012.02\DRAWINGS\EXHIBITS\0211012-02EXWPHA.dwg