

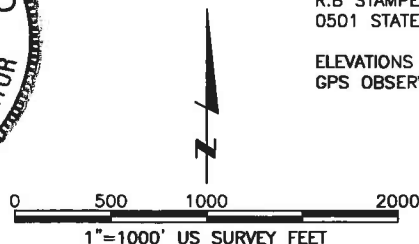
LAND SURVEYOR'S CERTIFICATION

LAMP, RYNEARSON & ASSOCIATES, INC., OF FT. COLLINS, COLORADO HAS, IN ACCORDANCE WITH A REQUEST FROM COLLIN RICHARDSON FOR MINERAL RESOURCES, INC., DETERMINED THE SURFACE LOCATION OF THE WELL DESIGNATED AS DT-HABITAT 2-5-6 TO BE 315' FROM THE NORTH LINE AND 1835' FROM THE EAST LINE OF SECTION 5, TOWNSHIP 5 NORTH, RANGE 65 WEST OF THE 6TH P.M., WELD COUNTY, COLORADO.



DAVID JOHN BERGLUND
 COLORADO PLS 38199

DATE OF SURVEY: 8/19/2010 (SECTION CONTROL)
 DATE OF SURVEY: 11/12/2012 (WELL LOCATION)



LAMP RYNEARSON & ASSOCIATES

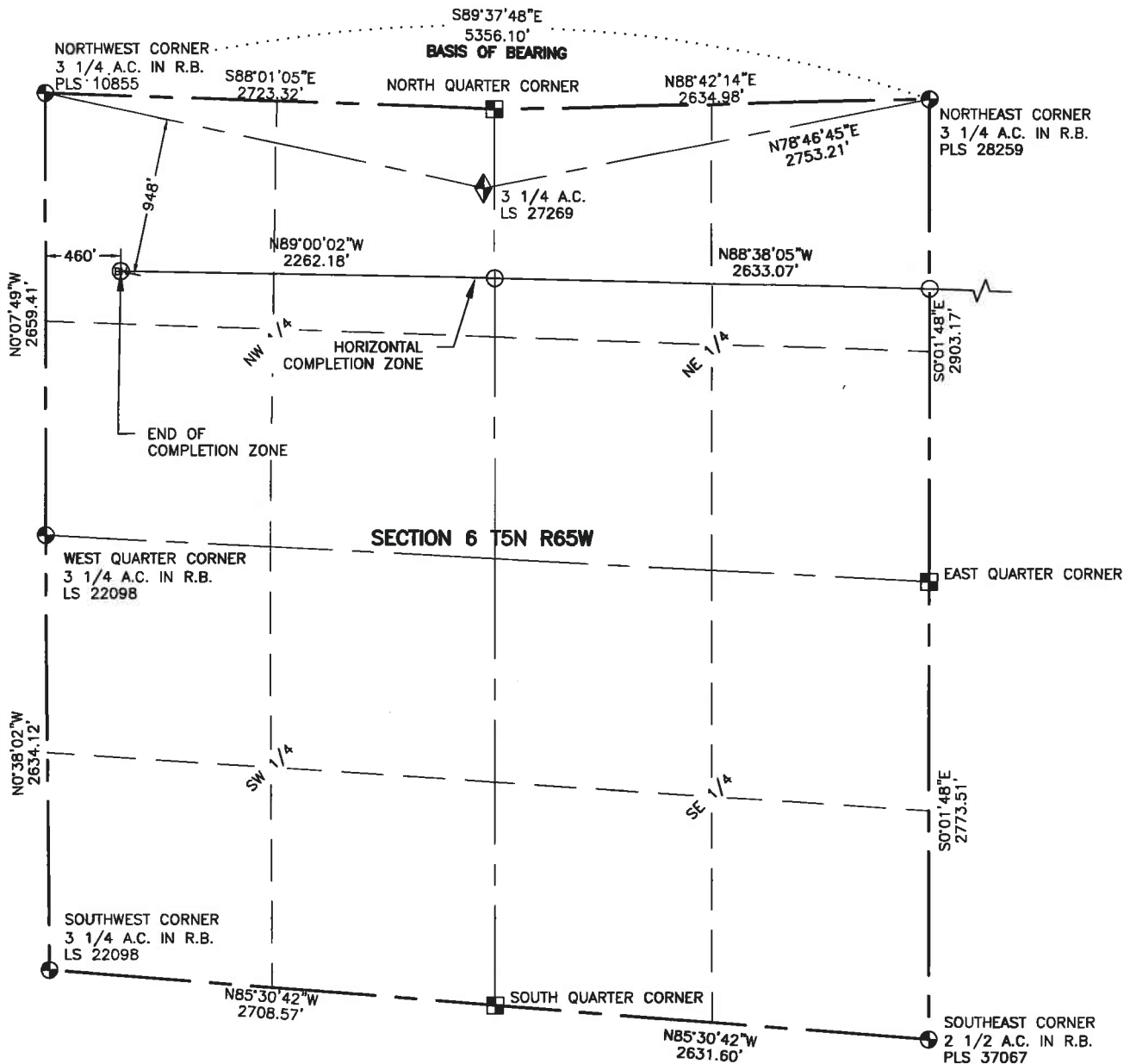
4715 Innovation Drive 970.226.0342 | P
 Fort Collins, CO 80525 970.226.0879 | F
 www.LRA-Inc.com

Proposed Well Location Exhibit
 DT-Habitat 2-5-6
 1 of 2

drawn by JJM date 12/12/13 cogcc id project - task number 0211012.02-502 book and page MRI02, 1

surface - location NW/4 NE/4 SEC 5 T5N R65W

path\filename P:\Engineering\0211012.02\DRAWINGS\EXHIBITS\0211012-02EXWPG.dwg



NOTES:

DISTANCES ARE MEASURED PERPENDICULAR TO NEAREST SECTION LINE AND ARE SHOWN ON THE SAME SIDE OF THE SECTION LINE WHERE THE WELL IS LOCATED.

THIS MAP DOES NOT REPRESENT A MONUMENTED BOUNDARY SURVEY.

BASIS OF BEARING:

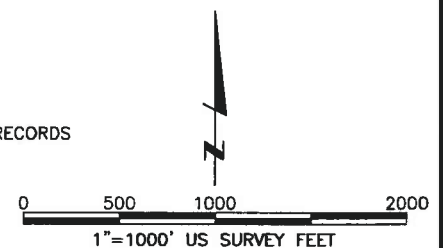
A LINE BETWEEN THE NORTHWEST AND NORTHEAST CORNERS OF SECTION 6-T5N-R65W AND BEARS S89°37'48\"/>

ELEVATIONS ARE BASED ON NAVD 88, AS OBSERVED FROM GPS OBSERVATIONS

LEGEND

- ◆ UNION COLONY CORNER
- ALIQUOT CORNER
- ⊕ BOTTOM HOLE
- COMPUTED FROM GLO RECORDS
- A.C. ALUMINUM CAP
- R.B. RANGE BOX

REVISIONS	0	1
	10/7/13	12/12/13
FIRST SUBMITTAL	●	
SECOND SUBMITTAL		●



LAMP RYNEARSON
& ASSOCIATES

4715 Innovation Drive 970.226.0342 | P
Fort Collins, CO 80525 970.226.0879 | F
www.LRA-Inc.com

Proposed Well Location Exhibit
DT-Habitat 2-5-6
2 of 2

drawn by
JJM

date
12/12/13

cogccc ld

project - task number
0211012.02-502

book and page
MRI02, 1

surface - location
NW/4 NE/4 SEC 5 T5N R65W

path\filename P:_Engineering\0211012.02\DRAWINGS\EXHIBITS\0211012-02EXWPGA.dwg