

T10N, R57W, 6th P.M.

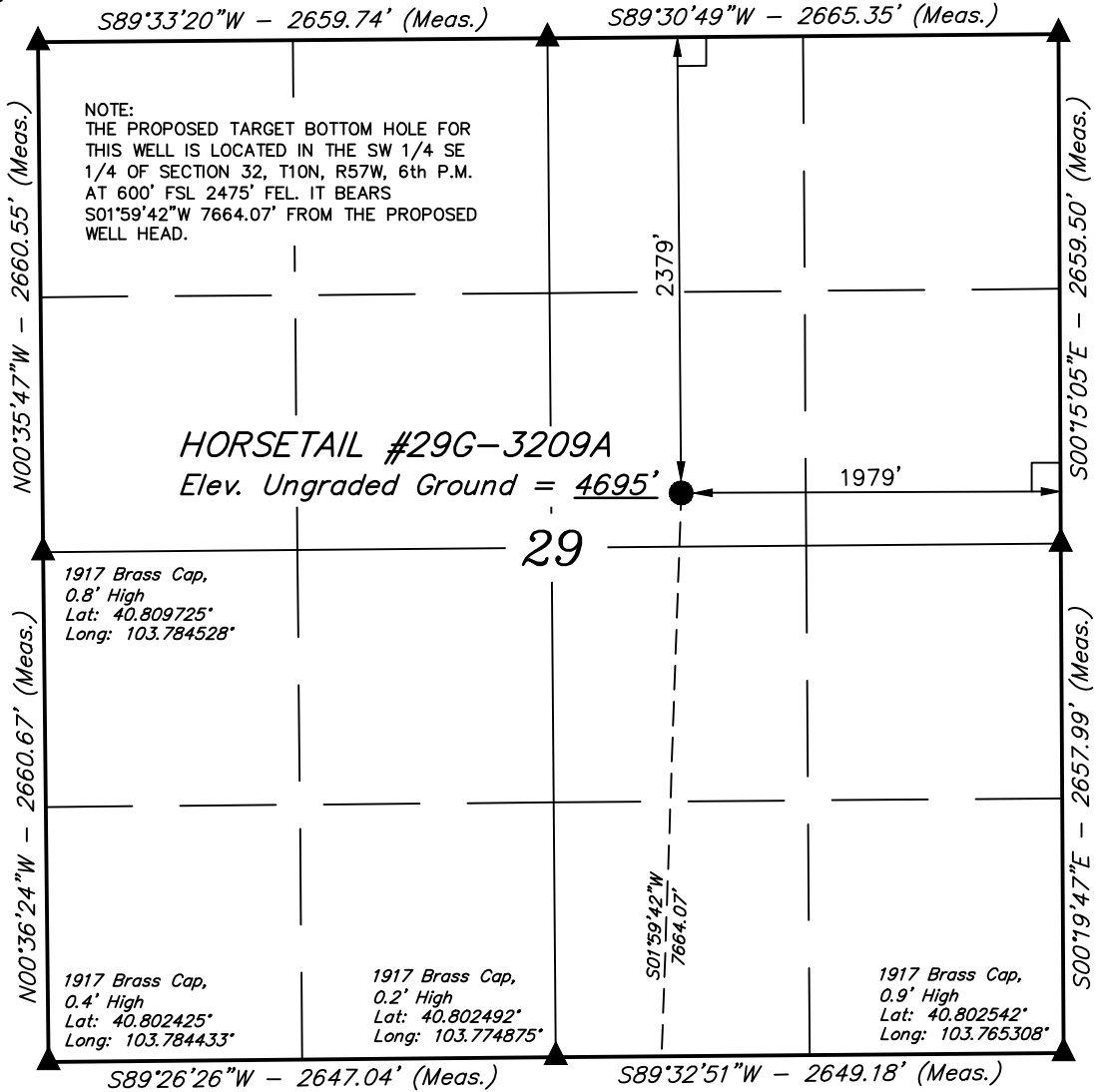
WHITING OIL & GAS CORP.

1917 Brass Cap,
Flush with Ground
Lat: 40.817025°
Long: 103.784622°

1917 Brass Cap,
1.6' High
Lat: 40.817078°
Long: 103.775017°

1917 Brass Cap,
0.2' High
Lat: 40.817133°
Long: 103.765389°

Well location, HORSETAIL #29G-3209A (SURFACE LOCATION), located as shown in the SW 1/4 NE 1/4 of Section 29, T10N, R57W, 6th P.M., Weld County, Colorado.



BASIS OF ELEVATION

SPOT ELEVATION LOCATED AT THE NORTHEAST CORNER OF SECTION 15, T9N, R58W, 6th P.M. TAKEN FROM THE GATEHOOK SPRING, QUADRANGLE, COLORADO, WELD COUNTY, 7.5 MINUTE QUAD (TOPOGRAPHIC MAP) PUBLISHED BY THE UNITED STATES DEPARTMENT OF THE INTERIOR, GEOLOGICAL SURVEY. SAID ELEVATION IS MARKED AS BEING 4679 FEET.

BASIS OF BEARINGS

BASIS OF BEARINGS IS A G.P.S. OBSERVATION.



SCALE

CERTIFICATION

THIS IS TO CERTIFY THAT THE ABOVE PLAT WAS PREPARED FROM FIELD NOTES OF ACTUAL SURVEYS MADE BY ME OR UNDER MY SUPERVISION AND THAT THE SAME ARE TRUE AND CORRECT TO THE BEST OF MY KNOWLEDGE AND BELIEF.



REGISTERED LAND SURVEYOR
REGISTRATION NO. 28285
STATE OF COLORADO 08-06-13

UINTAH ENGINEERING & LAND SURVEYING
85 SOUTH 200 EAST - VERNAL, UTAH 84078
(435) 789-1017

LEGEND:

- └─┘ = 90° SYMBOL
- = PROPOSED WELL HEAD.
- ▲ = SECTION CORNERS LOCATED.

Target Bottom Hole ○

PDOP = 1.9

NAD 83 (SURFACE LOCATION)	
LATITUDE = 40°48'38.03" (40.810564)	
LONGITUDE = 103°46'21.02" (103.772506)	
NAD 27 (SURFACE LOCATION)	
LATITUDE = 40°48'38.09" (40.810581)	
LONGITUDE = 103°46'19.21" (103.772003)	

SCALE 1" = 1000'	DATE SURVEYED: 08-01-13	DATE DRAWN: 08-07-13
PARTY D.L.S. D.M.S. A.D.	REFERENCES G.L.O. PLAT	
WEATHER HOT	FILE WHITING OIL & GAS CORP.	

T10N, R57W, 6th P.M.

WHITING OIL & GAS CORP.

Surface Location

1917 Brass Cap,
0.4' High
Lat: 40.802425°
Long: 103.784433°

1917 Brass Cap,
0.2' High
Lat: 40.802492°
Long: 103.774875°

1917 Brass Cap,
0.9' High
Lat: 40.802542°
Long: 103.765308°

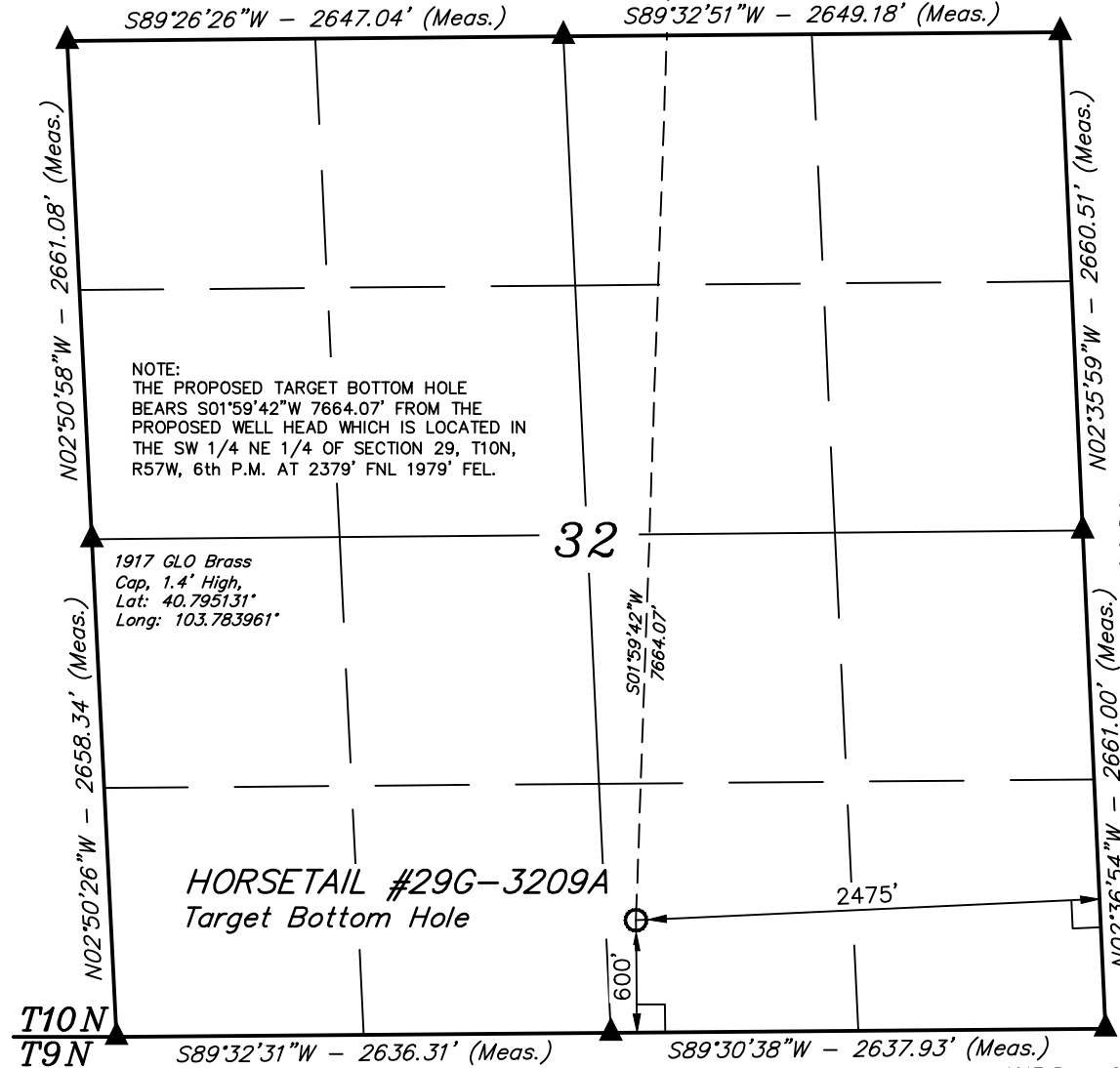
Well location, HORSETAIL #29G-3209A (TARGET BOTTOM HOLE), located as shown in the SW 1/4 SE 1/4 of Section 32, T10N, R57W, 6th P.M., Weld County, Colorado.

BASIS OF ELEVATION

SPOT ELEVATION LOCATED AT THE NORTHEAST CORNER OF SECTION 15, T9N, R58W, 6th P.M. TAKEN FROM THE GATEHOOK SPRING, QUADRANGLE, COLORADO, WELD COUNTY, 7.5 MINUTE QUAD (TOPOGRAPHIC MAP) PUBLISHED BY THE UNITED STATES DEPARTMENT OF THE INTERIOR, GEOLOGICAL SURVEY. SAID ELEVATION IS MARKED AS BEING 4679 FEET.

BASIS OF BEARINGS

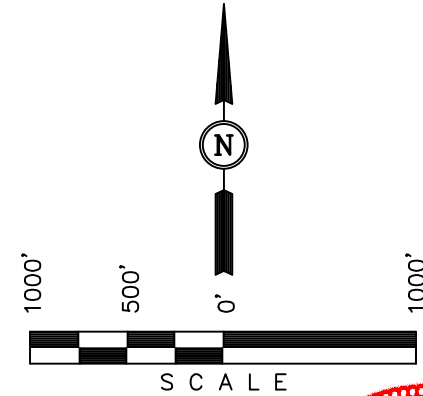
BASIS OF BEARINGS IS A G.P.S. OBSERVATION.



NOTE:
THE PROPOSED TARGET BOTTOM HOLE BEARS S01°59'42\"/>

1917 GLO Brass Cap, 1.4' High, Lat: 40.795131° Long: 103.783961°

1917 Brass Cap
0.4' High,
Lat: 40.795247°
Long: 103.764881°



CERTIFICATION
THIS IS TO CERTIFY THAT THE ABOVE PLAT WAS PREPARED FROM FIELD NOTES OF ACTUAL SURVEYS MADE BY ME OR UNDER MY SUPERVISION AND THAT THE SAME ARE TRUE AND CORRECT TO THE BEST OF MY KNOWLEDGE AND BELIEF.
REGISTERED LAND SURVEYOR
REGISTRATION NO. 28285
STATE OF COLORADO
08-06-13

- LEGEND:**
- └─┘ = 90° SYMBOL
 - = PROPOSED WELL HEAD.
 - ▲ = SECTION CORNERS LOCATED.

1917 Brass Cap
0.8' High,
Lat: 40.787897°
Long: 103.773975°

1917 Brass Cap
1.0' High,
Lat: 40.787953°
Long: 103.764450°

NAD 83 (TARGET BOTTOM HOLE)
LATITUDE = 40°47'22.37" (40.789547)
LONGITUDE = 103°46'24.56" (103.773489)
NAD 27 (TARGET BOTTOM HOLE)
LATITUDE = 40°47'22.42" (40.789561)
LONGITUDE = 103°46'22.75" (103.772986)

UINTAH ENGINEERING & LAND SURVEYING		
85 SOUTH 200 EAST - VERNAL, UTAH 84078		
(435) 789-1017		
SCALE 1" = 1000'	DATE SURVEYED: 08-01-13	DATE DRAWN: 08-07-13
PARTY D.L.S. D.M.S. A.D.	REFERENCES G.L.O. PLAT	
WEATHER HOT	FILE WHITING OIL & GAS CORP.	