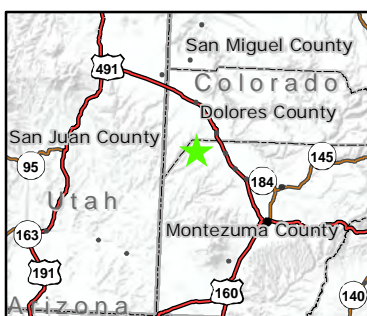
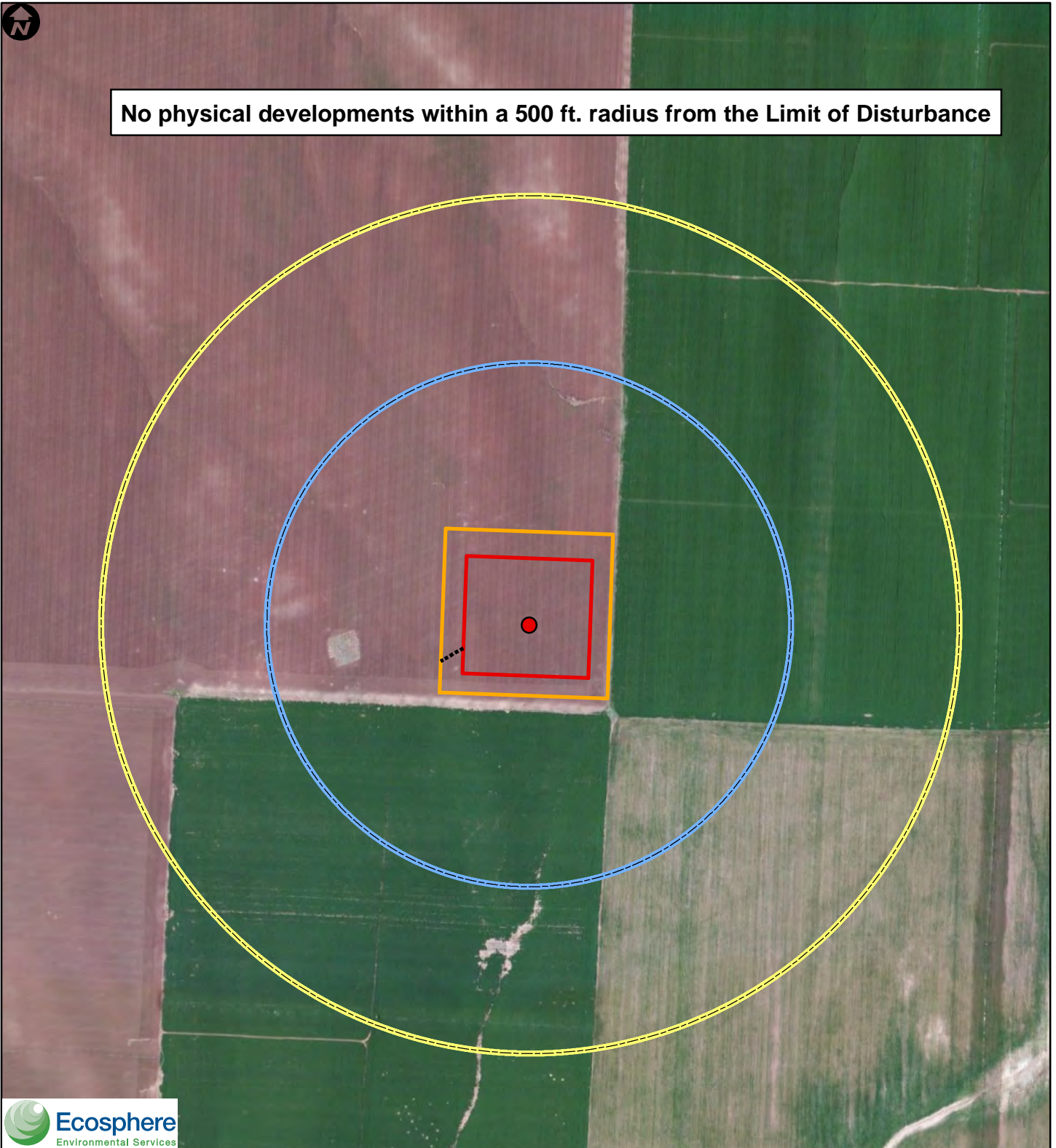
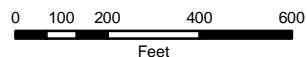




No physical developments within a 500 ft. radius from the Limit of Disturbance



- CN-4 Wellhead
- CN-4 Wellpad
- CN-4 Limits of Disturbance
- 1,000 ft. Radius
- 500 ft. Radius
- Proposed Access Route



1:5,000

Date: 10/28/2013

Coordinate System: NAD 1983 UTM Zone 12N

Kinder Morgan CO2 CN-4 CO2 Well

Location Drawing

Montezuma County, CO

Section: 36,
Township: 39 N, Range: 19

Ruin Canyon 1:24k Quad