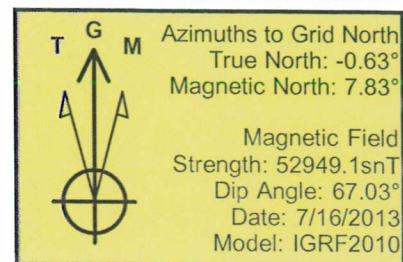
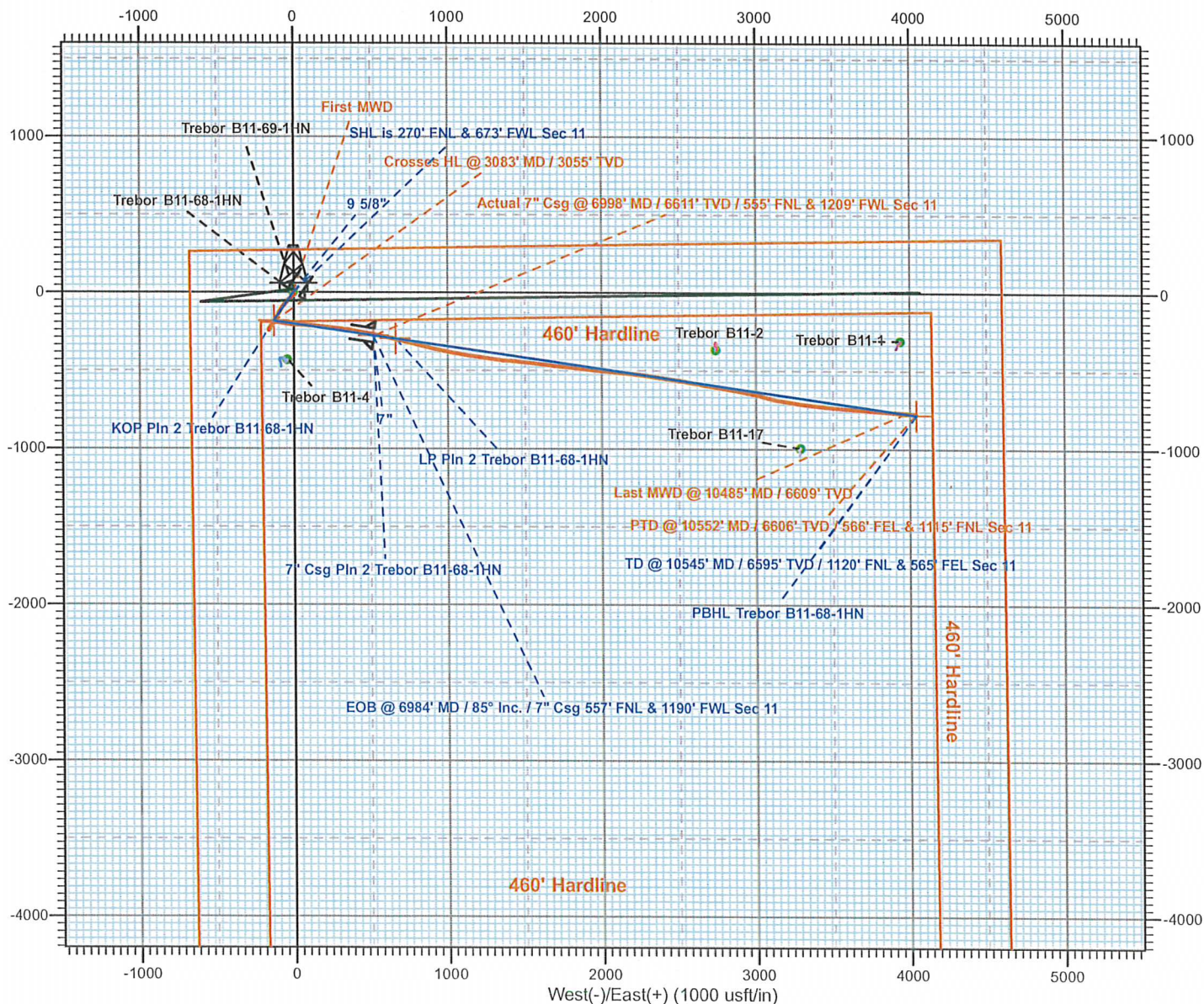


Weld County, CO (NAD 83)
 Sec 11 - T5N R64W (Trebor B11 Pad)
 Trebor B11-68-1HN
 HP 330
 Plan #2



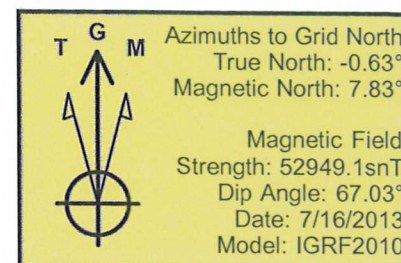
LEGEND

- Trebor B11-68-1HN, Wellbore #1, OH V0
- Trebor B11-4, Wellbore #1, OH V0
- +— Trebor B11-2, Wellbore #1, OH V0
- ◇— Trebor B11-17, Wellbore #1, OH V0
- △— Trebor B11-1, Wellbore #1, OH V0
- X— Trebor B11-69-1HN, Wellbore #1, Plan #1 V0
- Plan #2



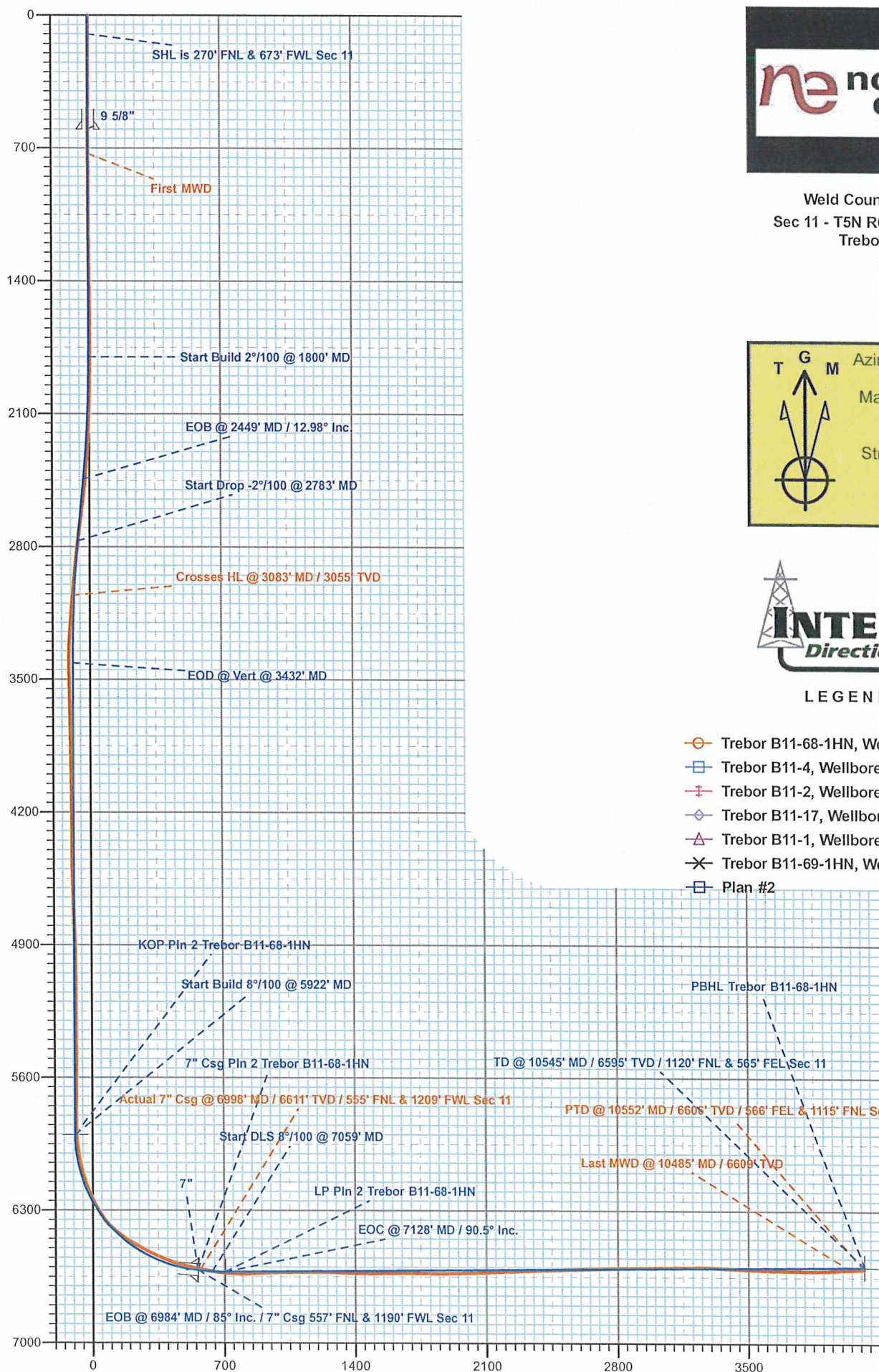


Weld County, CO (NAD 83)
 Sec 11 - T5N R64W (Trebor B11 Pad)
 Trebor B11-68-1HN
 HP 330
 Plan #2



LEGEND

- Trebor B11-68-1HN, Wellbore #1, OH V0
- Trebor B11-4, Wellbore #1, OH V0
- ✚ Trebor B11-2, Wellbore #1, OH V0
- ◇ Trebor B11-17, Wellbore #1, OH V0
- △ Trebor B11-1, Wellbore #1, OH V0
- ✕ Trebor B11-69-1HN, Wellbore #1, Plan #1 V0
- Plan #2



Vertical Section at 100.95° (700 usft/in)



Job Number: CO13398NB
 Company: Noble Energy
 Lease/Well: Trebor B11-68-1HN
 Location: Weld Co
 Rig Name: HP 330
 RKB:
 G.L. or M.S.L.:

State/Country: Colorado/US
 Declination:
 Grid:
 File name: C:\WINSERVE\CO13398N.SVY
 Date/Time: 06-Aug-13 / 09:56
 Curve Name: C:\DOCUME~1\JIMWES~1\DESKTOP\TREBOR~1\H&

Integrity Directional Services

WINSERVE SURVEY CALCULATIONS
 Minimum Curvature Method
 Vertical Section Plane 100.95
 Vertical Section Referenced to Wellhead
 Rectangular Coordinates Referenced to Wellhead

Measured Depth FT	Incl Angle Deg	Drift Direction Deg	True Vertical Depth	N-S FT	E-W FT	Vertical Section FT	CLOSURE Distance FT	Direction Deg	Dogleg Severity Deg/100
Tied Into Wireline Surveys									
684.00	.20	217.63	684.00	-1.50	-1.15	-.85	1.89	217.63	.00
First MWD Survey									
728.00	.70	181.30	728.00	-1.83	-1.21	-.84	2.19	213.46	1.25
821.00	.70	155.10	820.99	-2.91	-.98	-.41	3.07	198.63	.34
914.00	.70	174.10	913.98	-3.99	-.68	.09	4.05	189.72	.25
1008.00	.90	171.30	1007.97	-5.29	-.51	.50	5.32	185.53	.22
1102.00	.90	175.00	1101.96	-6.76	-.34	.95	6.76	182.85	.06
1195.00	.70	154.30	1194.95	-8.00	-.03	1.49	8.00	180.19	.37
1290.00	.90	164.50	1289.94	-9.24	.42	2.17	9.25	177.37	.26
1385.00	.90	139.00	1384.93	-10.52	1.11	3.09	10.58	173.96	.42
1480.00	.20	131.90	1479.93	-11.19	1.73	3.82	11.33	171.23	.74
1575.00	.50	85.20	1574.93	-11.27	2.26	4.36	11.49	168.65	.41
1669.00	.40	96.60	1668.92	-11.27	3.00	5.08	11.66	165.11	.14
1764.00	.40	103.60	1763.92	-11.39	3.65	5.75	11.96	162.23	.05
1859.00	1.10	216.70	1858.91	-12.20	3.43	5.68	12.67	164.31	1.38
1953.00	2.50	222.80	1952.87	-14.43	1.49	4.21	14.50	174.09	1.50
2048.00	2.10	231.60	2047.79	-17.03	-1.28	1.98	17.08	184.29	.56
2142.00	4.00	233.00	2141.65	-20.07	-5.25	-1.34	20.74	194.65	2.02
2237.00	4.90	231.60	2236.36	-24.58	-11.07	-6.20	26.96	204.24	.95
2332.00	7.20	227.20	2330.83	-31.15	-18.62	-12.36	36.29	210.87	2.47
2427.00	10.60	220.70	2424.67	-41.82	-28.69	-20.22	50.72	214.45	3.73
2521.00	13.20	219.60	2516.65	-56.65	-41.17	-29.66	70.03	216.01	2.78

Measured Depth FT	Incl Angle Deg	Drift Direction Deg	True Vertical Depth	N-S FT	E-W FT	Vertical Section FT	C L O S U R E		Dogleg Severity Deg/100
							Distance FT	Direction Deg	
2616.00	16.00	221.20	2608.57	-74.86	-56.71	-41.46	93.92	217.15	2.98
2711.00	18.70	212.80	2699.25	-97.52	-73.59	-53.73	122.17	217.04	3.87
2806.00	17.80	210.90	2789.47	-122.78	-89.30	-64.35	151.82	216.03	1.14
2901.00	17.60	210.30	2879.98	-147.64	-104.00	-74.06	180.60	215.16	.28
2996.00	15.70	212.60	2970.99	-170.88	-118.18	-83.57	207.76	214.67	2.12
3092.00	13.70	211.40	3063.84	-191.52	-131.10	-92.33	232.09	214.39	2.11
3187.00	11.10	215.70	3156.62	-208.56	-142.30	-100.09	252.48	214.31	2.90
3282.00	7.90	216.50	3250.31	-221.23	-151.52	-106.74	268.15	214.41	3.37
3377.00	4.80	203.50	3344.72	-230.13	-156.99	-110.42	278.58	214.30	3.58
3472.00	2.50	181.00	3439.52	-235.85	-158.61	-110.92	284.22	213.92	2.81
3567.00	1.10	159.00	3534.47	-238.77	-158.32	-110.08	286.49	213.55	1.62
3661.00	2.50	53.90	3628.44	-238.40	-156.34	-108.21	285.09	213.26	3.17
3756.00	3.30	27.70	3723.32	-234.76	-153.39	-106.01	280.43	213.16	1.61
3851.00	3.70	28.70	3818.15	-229.65	-150.65	-104.29	274.66	213.26	.43
3946.00	3.20	26.50	3912.97	-224.59	-148.00	-102.64	268.97	213.38	.54
4041.00	2.50	20.70	4007.86	-220.28	-146.08	-101.58	264.32	213.55	.80
4136.00	1.80	20.50	4102.79	-216.94	-144.83	-100.98	260.84	213.73	.74
4230.00	1.80	25.80	4196.74	-214.23	-143.67	-100.36	257.94	213.85	.18
4325.00	1.60	21.90	4291.70	-211.66	-142.52	-99.72	255.17	213.95	.24
4420.00	1.40	17.50	4386.67	-209.32	-141.68	-99.34	252.76	214.09	.24
4515.00	1.40	23.50	4481.64	-207.15	-140.87	-98.95	250.51	214.22	.15
4610.00	2.50	47.00	4576.58	-204.67	-138.89	-97.48	247.35	214.16	1.41
4705.00	2.60	63.40	4671.49	-202.29	-135.45	-94.55	243.45	213.80	.77
4800.00	2.90	74.50	4766.38	-200.69	-131.20	-90.69	239.77	213.18	.64
4895.00	2.90	43.50	4861.27	-198.30	-127.23	-87.25	235.61	212.68	1.63
4990.00	2.60	39.10	4956.16	-194.89	-124.22	-84.94	231.11	212.51	.39
5085.00	1.40	16.40	5051.10	-192.10	-122.53	-83.81	227.85	212.53	1.49
5180.00	.90	1.20	5146.08	-190.24	-122.19	-83.83	226.10	212.71	.61
5275.00	.70	25.60	5241.07	-188.97	-121.92	-83.81	224.89	212.83	.41
5370.00	.40	108.20	5336.07	-188.55	-121.36	-83.33	224.23	212.77	.80
5464.00	.40	113.70	5430.07	-188.79	-120.75	-82.69	224.10	212.60	.04
5559.00	.70	165.70	5525.06	-189.48	-120.30	-82.12	224.44	212.41	.58
5654.00	1.10	273.60	5620.05	-189.99	-121.07	-82.77	225.28	212.51	1.55
5749.00	.90	245.70	5715.04	-190.24	-122.66	-84.29	226.35	212.81	.55
5843.00	.90	250.60	5809.03	-190.79	-124.03	-85.53	227.56	213.03	.08
5937.00	3.80	82.50	5902.97	-190.62	-121.63	-83.21	226.12	212.54	4.98
5985.00	8.40	89.40	5950.69	-190.38	-116.55	-78.26	223.22	211.47	9.69
6032.00	10.10	93.40	5997.08	-190.59	-109.00	-70.81	219.56	209.77	3.86
6080.00	10.10	93.00	6044.33	-191.06	-100.60	-62.47	215.92	207.77	.15
6127.00	13.30	96.90	6090.35	-191.92	-91.11	-52.99	212.45	205.39	7.01
6174.00	18.00	101.40	6135.60	-194.01	-78.62	-40.33	209.33	202.06	10.32
6222.00	21.80	100.70	6180.72	-197.13	-62.58	-24.00	206.83	197.61	7.93
6269.00	24.10	97.60	6224.00	-200.02	-44.49	-5.69	204.91	192.54	5.53
6317.00	27.30	97.50	6267.25	-202.76	-23.86	15.09	204.15	186.71	6.67
6364.00	32.20	94.10	6308.04	-205.06	-.67	38.30	205.06	180.19	11.02

Measured Depth FT	Incl Angle Deg	Drift Direction Deg	True Vertical Depth	N-S FT	E-W FT	Vertical Section FT	C L O S U R E		Dogleg Severity Deg/100
							Distance FT	Direction Deg	
6411.00	37.50	91.30	6346.60	-206.28	26.15	64.85	207.93	172.78	11.78
6459.00	44.10	92.90	6382.92	-207.46	57.47	95.83	215.27	164.52	13.92
6506.00	51.10	94.80	6414.59	-209.82	92.07	130.25	229.13	156.31	15.19
6554.00	57.20	95.90	6442.69	-213.46	130.79	168.95	250.34	148.50	12.84
6601.00	59.70	96.10	6467.28	-217.65	170.62	208.85	276.55	141.91	5.33
6649.00	60.60	95.50	6491.17	-221.85	212.04	250.32	306.88	136.30	2.17
6696.00	61.70	94.80	6513.85	-225.55	253.03	291.27	338.97	131.71	2.68
6743.00	64.50	95.10	6535.11	-229.16	294.79	332.95	373.38	127.86	5.98
6791.00	68.30	98.10	6554.33	-234.23	338.47	376.80	411.61	124.69	9.77
6838.00	71.30	99.80	6570.56	-241.10	382.03	420.87	451.75	122.26	7.23
6886.00	73.50	101.90	6585.07	-249.72	426.96	466.62	494.62	120.32	6.20
6933.00	76.40	101.50	6597.28	-258.92	471.40	512.00	537.83	118.78	6.22
7043.00	80.40	100.50	6619.39	-279.47	577.15	619.73	641.25	115.84	3.74
7138.00	83.80	103.60	6632.45	-299.12	669.15	713.78	732.96	114.09	4.82
7233.00	91.80	103.80	6636.09	-321.58	761.30	808.53	826.44	112.90	8.42
7327.00	92.90	104.30	6632.24	-344.38	852.41	902.31	919.35	112.00	1.29
7422.00	91.50	102.20	6628.59	-366.14	944.81	997.15	1013.27	111.18	2.66
7517.00	91.80	100.60	6625.86	-384.91	1037.89	1092.11	1106.97	110.35	1.71
7612.00	89.00	99.60	6625.19	-401.57	1131.41	1187.09	1200.56	109.54	3.13
7706.00	87.80	97.80	6627.82	-415.78	1224.28	1280.97	1292.96	108.76	2.30
7801.00	88.30	96.80	6631.05	-427.84	1318.46	1375.72	1386.14	107.98	1.18
7896.00	89.60	95.70	6632.79	-438.18	1412.87	1470.38	1479.26	107.23	1.79
7991.00	91.30	95.90	6632.05	-447.78	1507.38	1564.99	1572.48	106.54	1.80
8086.00	89.70	95.90	6631.22	-457.55	1601.87	1659.62	1665.93	105.94	1.68
8181.00	89.40	97.00	6631.96	-468.22	1696.26	1754.32	1759.70	105.43	1.20
8276.00	89.70	96.20	6632.71	-479.14	1790.63	1849.04	1853.63	104.98	.90
8370.00	90.80	95.90	6632.30	-489.04	1884.11	1942.70	1946.54	104.55	1.21
8465.00	92.60	95.40	6629.48	-498.39	1978.60	2037.25	2040.40	104.14	1.97
8560.00	92.60	95.50	6625.17	-507.41	2073.07	2131.71	2134.26	103.75	.11
8654.00	91.30	95.50	6621.97	-516.41	2166.58	2225.23	2227.28	103.41	1.38
8749.00	92.20	96.80	6619.07	-526.58	2260.99	2319.85	2321.50	103.11	1.66
8844.00	92.00	98.50	6615.59	-539.22	2355.08	2414.62	2416.02	102.90	1.80
8939.00	92.00	98.90	6612.27	-553.58	2448.93	2509.49	2510.71	102.74	.42
9034.00	91.70	99.20	6609.21	-568.52	2542.69	2604.39	2605.48	102.60	.45
9129.00	92.20	101.00	6605.97	-585.17	2636.16	2699.32	2700.33	102.52	1.97
9223.00	90.80	99.20	6603.51	-601.64	2728.67	2793.27	2794.21	102.43	2.43
9318.00	91.30	100.10	6601.77	-617.56	2822.31	2888.23	2889.08	102.34	1.08
9413.00	90.10	99.60	6600.61	-633.81	2915.90	2983.20	2983.99	102.26	1.37
9507.00	90.60	102.90	6600.04	-652.15	3008.08	3077.19	3077.96	102.23	3.55
9602.00	90.80	105.60	6598.88	-675.53	3100.14	3172.01	3172.89	102.29	2.85
9697.00	89.60	100.30	6598.55	-696.81	3192.69	3266.92	3267.84	102.31	5.72
9792.00	87.40	96.40	6601.03	-710.60	3286.62	3361.77	3362.57	102.20	4.71
9886.00	86.40	96.60	6606.12	-721.23	3379.88	3455.34	3455.98	102.05	1.08
9981.00	87.60	95.70	6611.09	-731.39	3474.20	3549.88	3550.35	101.89	1.58
10076.00	88.90	95.00	6613.99	-740.24	3568.74	3644.38	3644.71	101.72	1.55

Measured Depth FT	Incl Angle Deg	Drift Direction Deg	True Vertical Depth	N-S FT	E-W FT	Vertical Section FT	C L O S U R E		Dogleg Severity Deg/100
							Distance FT	Direction Deg	
10171.00	89.20	94.70	6615.56	-748.27	3663.39	3738.83	3739.03	101.54	.45
10265.00	90.10	93.60	6616.14	-755.08	3757.14	3832.16	3832.26	101.36	1.51
10360.00	92.00	94.00	6614.40	-761.37	3851.91	3926.40	3926.43	101.18	2.04
10455.00	92.40	93.60	6610.75	-767.66	3946.63	4020.59	4020.60	101.01	.60
Last MWD Survey									
10485.00	92.90	93.60	6609.36	-769.54	3976.54	4050.32	4050.32	100.95	1.67
Straight Line Projection to TD									
10552.00	92.90	93.60	6605.97	-773.74	4043.32	4116.68	4116.69	100.83	.00