

LEGEND:

PROPOSED LOCATION



GREAT WESTERN OIL & GAS COMPANY

SCHMUNK 31 OFF-SITE TANK PAD
 SECTION 31, T7N, R65W, 6th P.M.
 1665' FNL 1357' FEL

Uintah Engineering & Land Surveying
 85 South 200 East Vernal, Utah 84078
 (435) 789-1017 * FAX (435) 789-1813

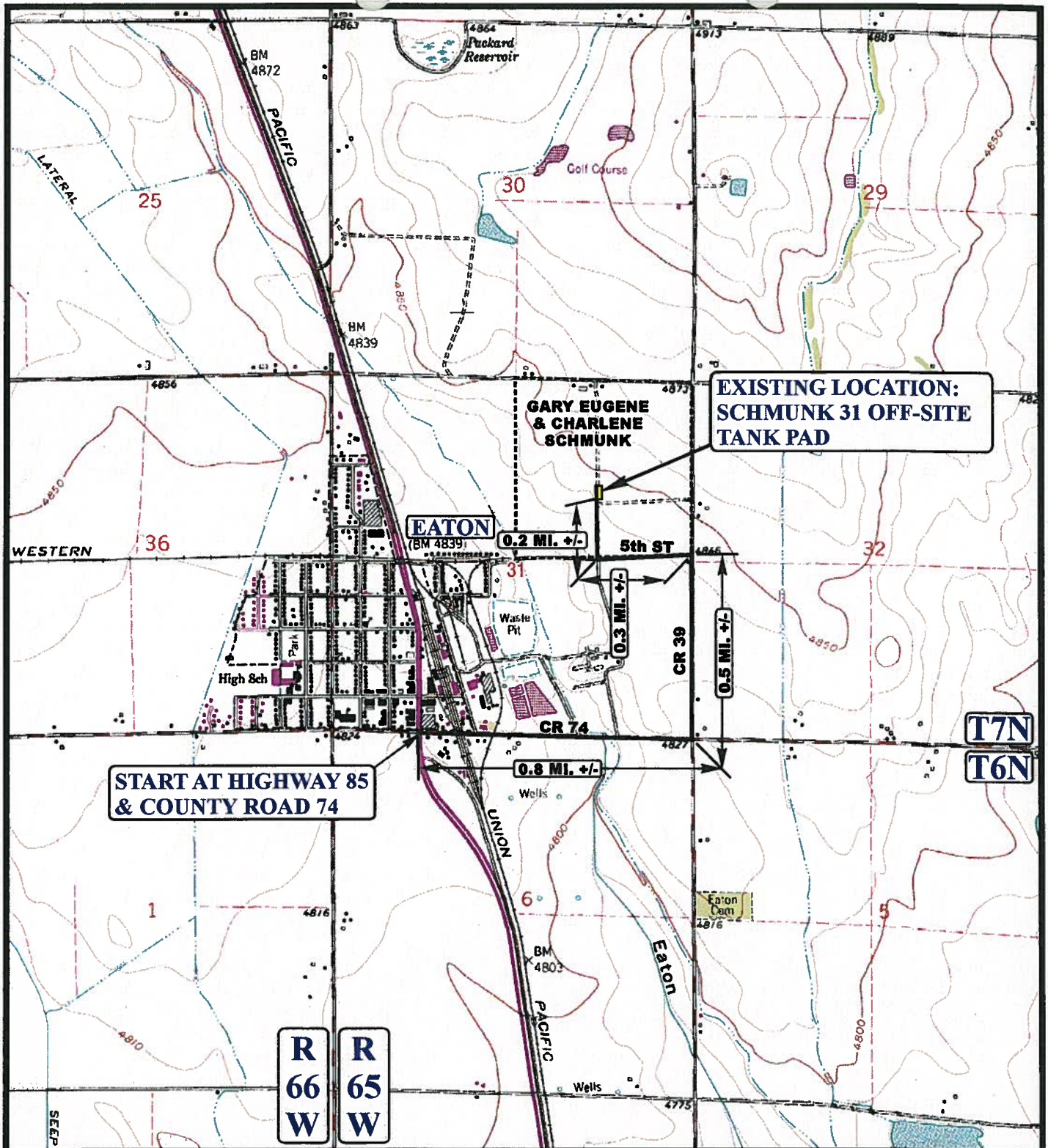
ACCESS ROAD
 MAP

SCALE: 1:100,000

01 17 13
 MONTH DAY YEAR

DRAWN BY: A.T.

REVISED: 00-00-00



LEGEND:

————— EXISTING ROAD
 - - - - - PROPOSED ACCESS ROAD



GREAT WESTERN OIL & GAS COMPANY

SCHMUNK 31 OFF-SITE TANK PAD
 SECTION 31, T7N, R65W, 6th P.M.
 1665' FNL 1357' FEL



Uintah Engineering & Land Surveying
 85 South 200 East Vernal, Utah 84078
 (435) 789-1017 * FAX (435) 789-1813

ACCESS ROAD
 MAP

01 17 13
 MONTH DAY YEAR

SCALE: 1" = 2000'

DRAWN BY: A.T.

REVISED: 00-00-00

