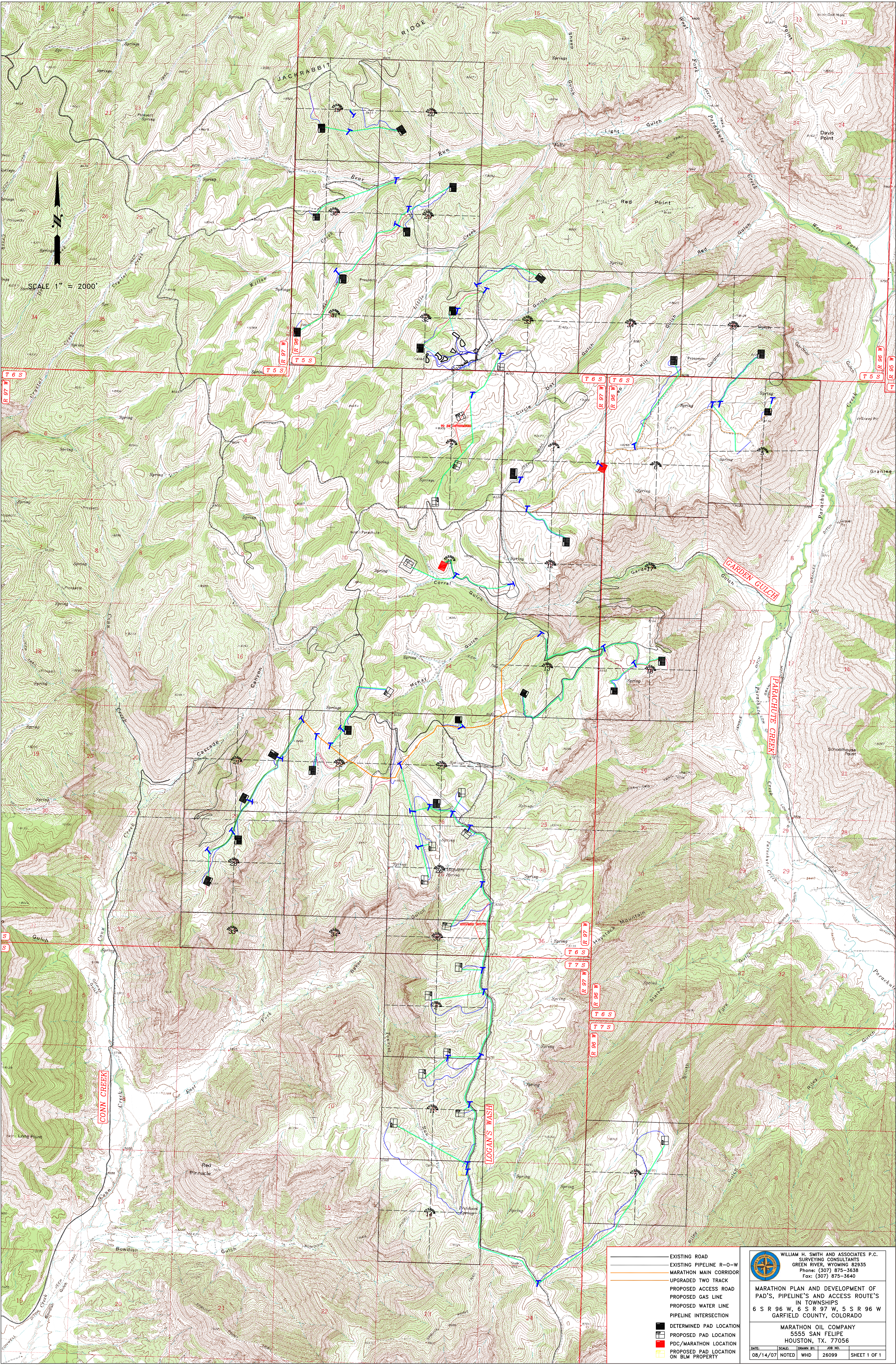


Appendix D: Diagrams

Piceance Basin, CO

List of Diagram/Maps for Piceance Basin, CO	
✓	Piceance Basin – Overview Map
✓	Piceance Basin – Detailed Overview Map
✓	Piceance Basin – Stormwater Management Vicinity Map
✓	Piceance Basin – Pipeline Map
✓	Piceance Basin – Well Pad and Tower Locations
✓	Piceance Basin – Marathon Leasehold with Surface Ownership
✓	Piceance Basin – Facilities with American Peregrine Falcon Activity
✓	Piceance Basin – Facilities with Sage Grouse, Eagle and Raptor Activity
✓	Piceance Basin – Greater Sage-grouse Lek Sites



- EXISTING ROAD
- EXISTING PIPELINE R-O-W
- MARATHON MAIN CORRIDOR
- UPGRADED TWO TRACK
- PROPOSED ACCESS ROAD
- PROPOSED GAS LINE
- PROPOSED WATER LINE
- PIPELINE INTERSECTION
- DETERMINED PAD LOCATION
- PROPOSED PAD LOCATION
- PDC/MARATHON LOCATION
- PROPOSED PAD LOCATION ON BLM PROPERTY

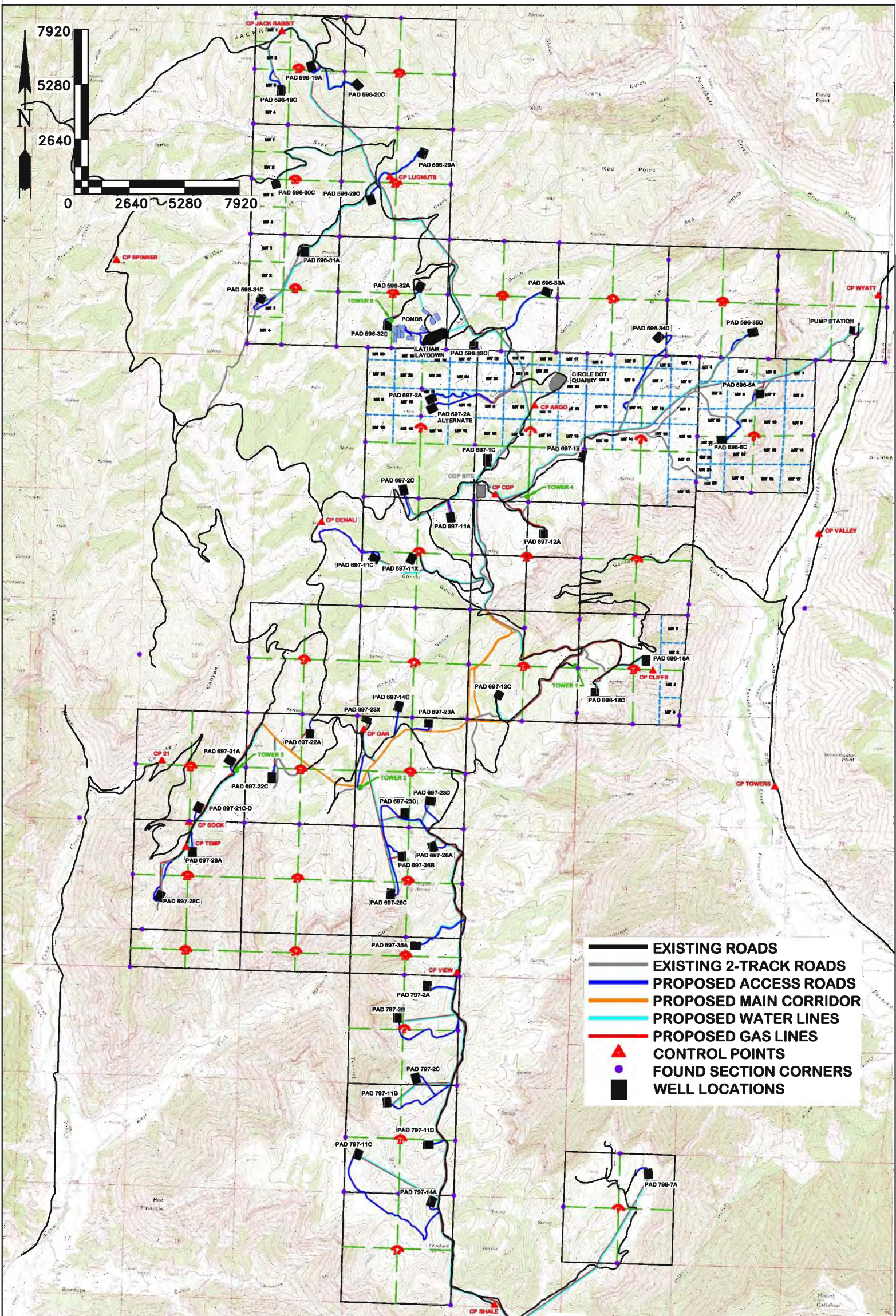


WILLIAM H. SMITH AND ASSOCIATES P.C.
SURVEYING CONSULTANTS
GREEN RIVER, WYOMING 82935
Phone: (307) 875-3658
Fax: (307) 875-3640

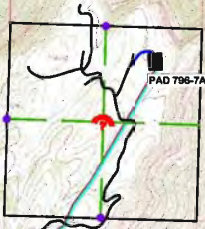
MARATHON PLAN AND DEVELOPMENT OF
PAD'S, PIPELINE'S AND ACCESS ROUTE'S
IN TOWNSHIPS
6 S R 96 W, 6 S R 97 W, 5 S R 96 W
GARFIELD COUNTY, COLORADO

MARATHON OIL COMPANY
5555 SAN FELIPE
HOUSTON, TX. 77056

DATE	SCALE	DRAWN BY	JOB NO.	SHEET
08/14/07	NOTED	WHO	26099	SHEET 1 OF 1



- EXISTING ROADS
- EXISTING 2-TRACK ROADS
- PROPOSED ACCESS ROADS
- PROPOSED MAIN CORRIDOR
- PROPOSED WATER LINES
- PROPOSED GAS LINES
- CONTROL POINTS
- FOUND SECTION CORNERS
- WELL LOCATIONS

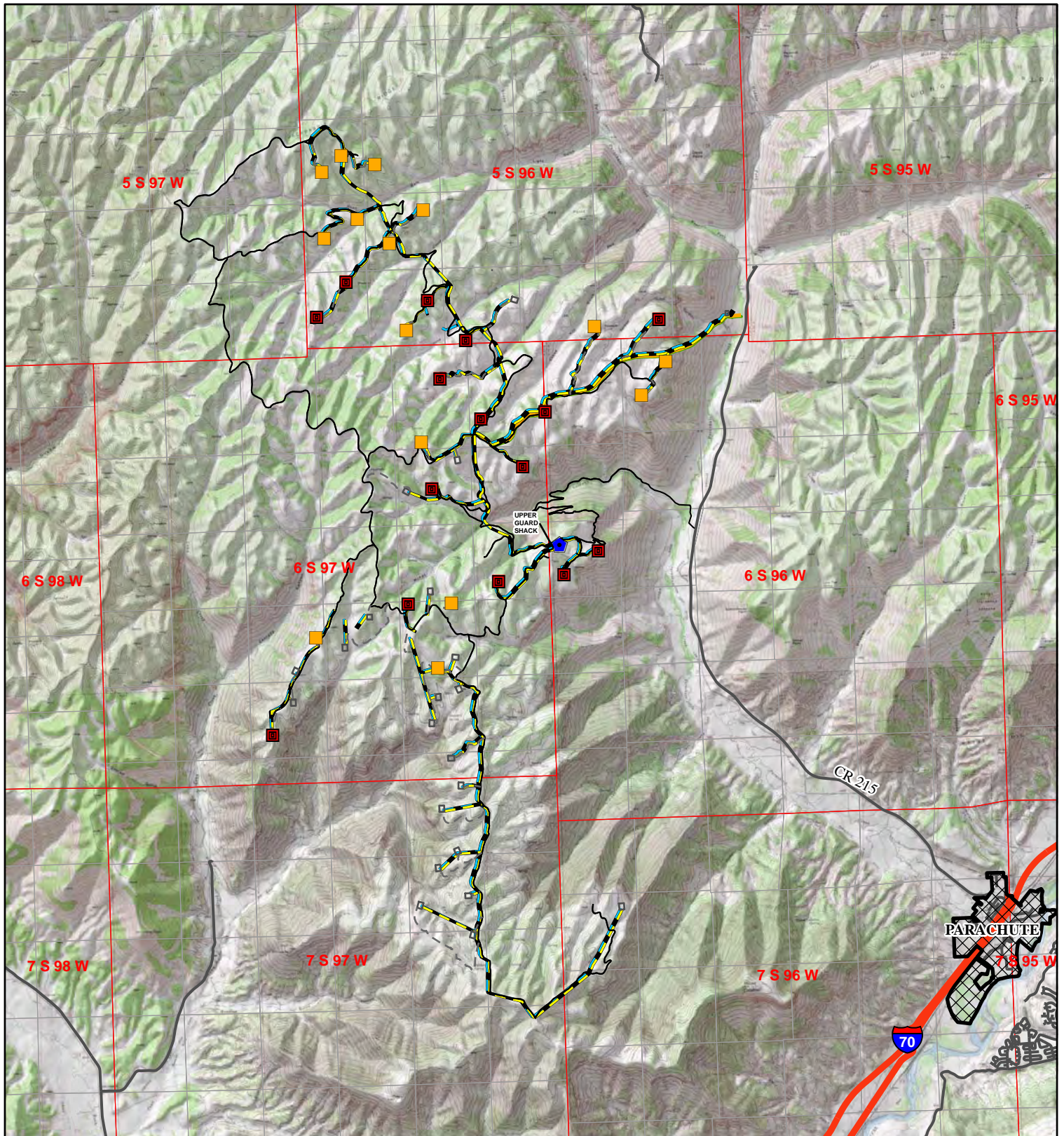


WILLIAM H. SMITH AND ASSOCIATES P.C.
SURVEYING CONSULTANTS
GREEN RIVER, WYOMING 82935
Phone: (307) 875-3638
Fax: (307) 875-3640

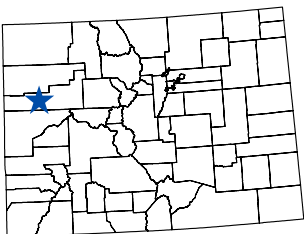
SURFACE OWNERSHIP MAP

MARATHON OIL COMPANY
5555 SAN FELIPE
HOUSTON, TX. 77056

DATE:	SCALE:	DRAWN BY:	JOB NO.	
06/11/08	noted	CED	26099	SHEET 1 OF 1



Project Location



Legend

Marathon Well Pad Location

- Proposed
- Existing

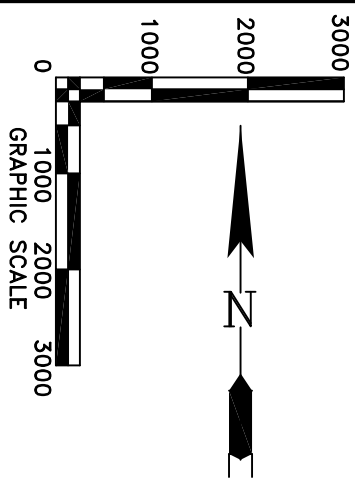
0 1.25 2.5 5 Miles



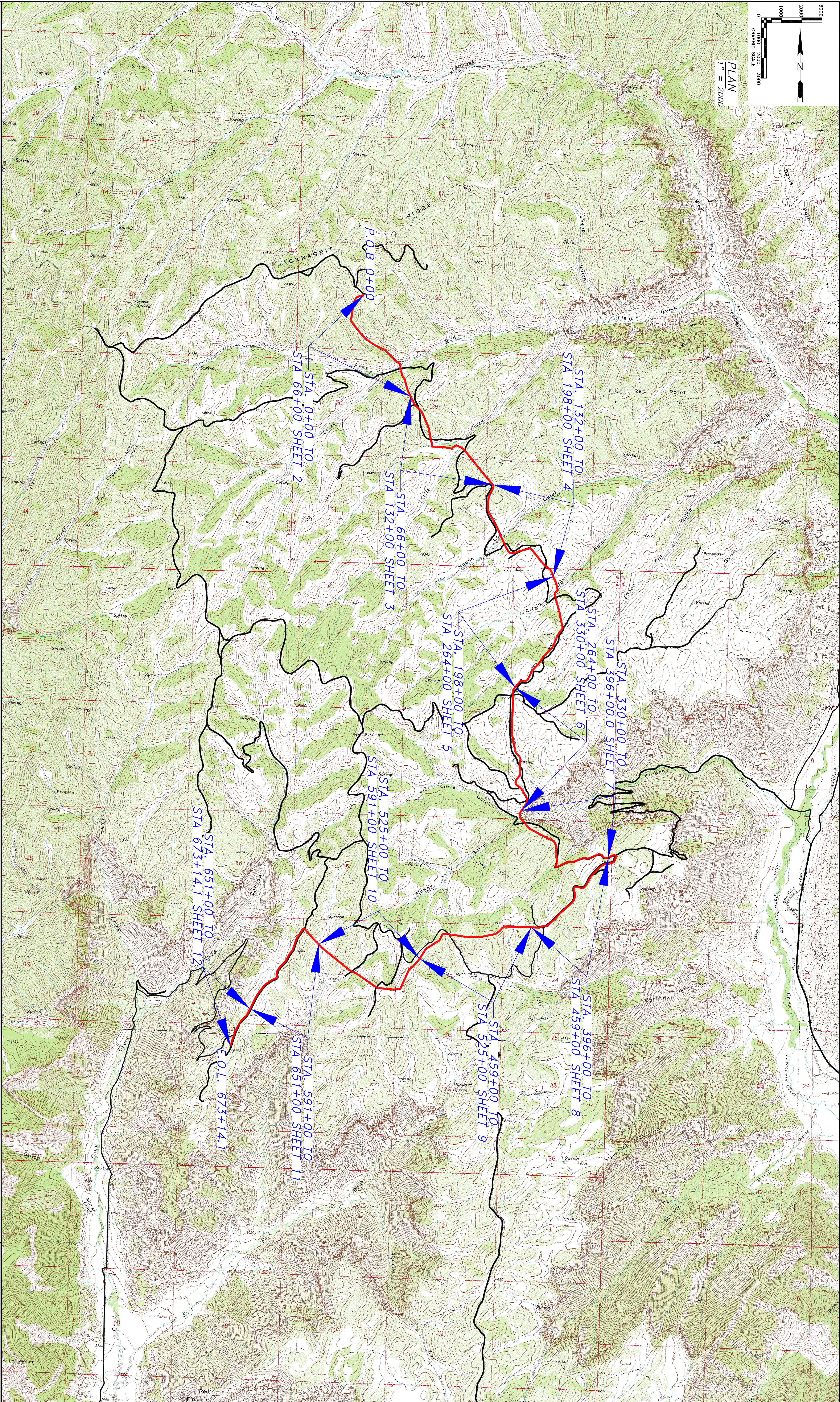
Marathon Oil Company

**Stormwater Management
Vicinity Map**

B&A Buys & Associates, Inc.
Environmental Consultants



PLAN
1" = 2000'



MAIN CORRIDOR
STA. 0+00 TO STA. 673+14.1

LEGEND
CENTER LINE P-O-W
EXISTING ROADS



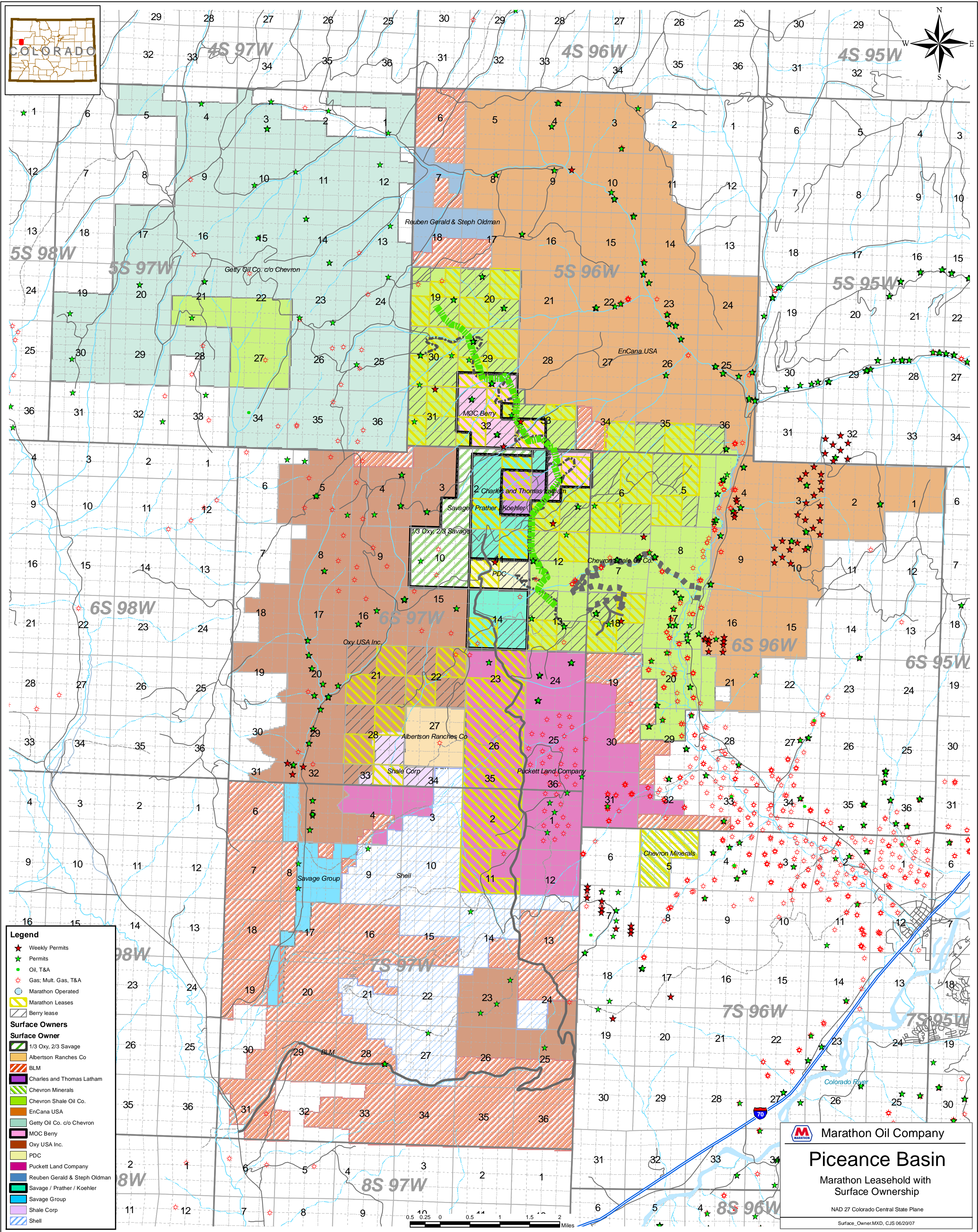
WILLIAM H. SMITH
& ASSOCIATES P.C.

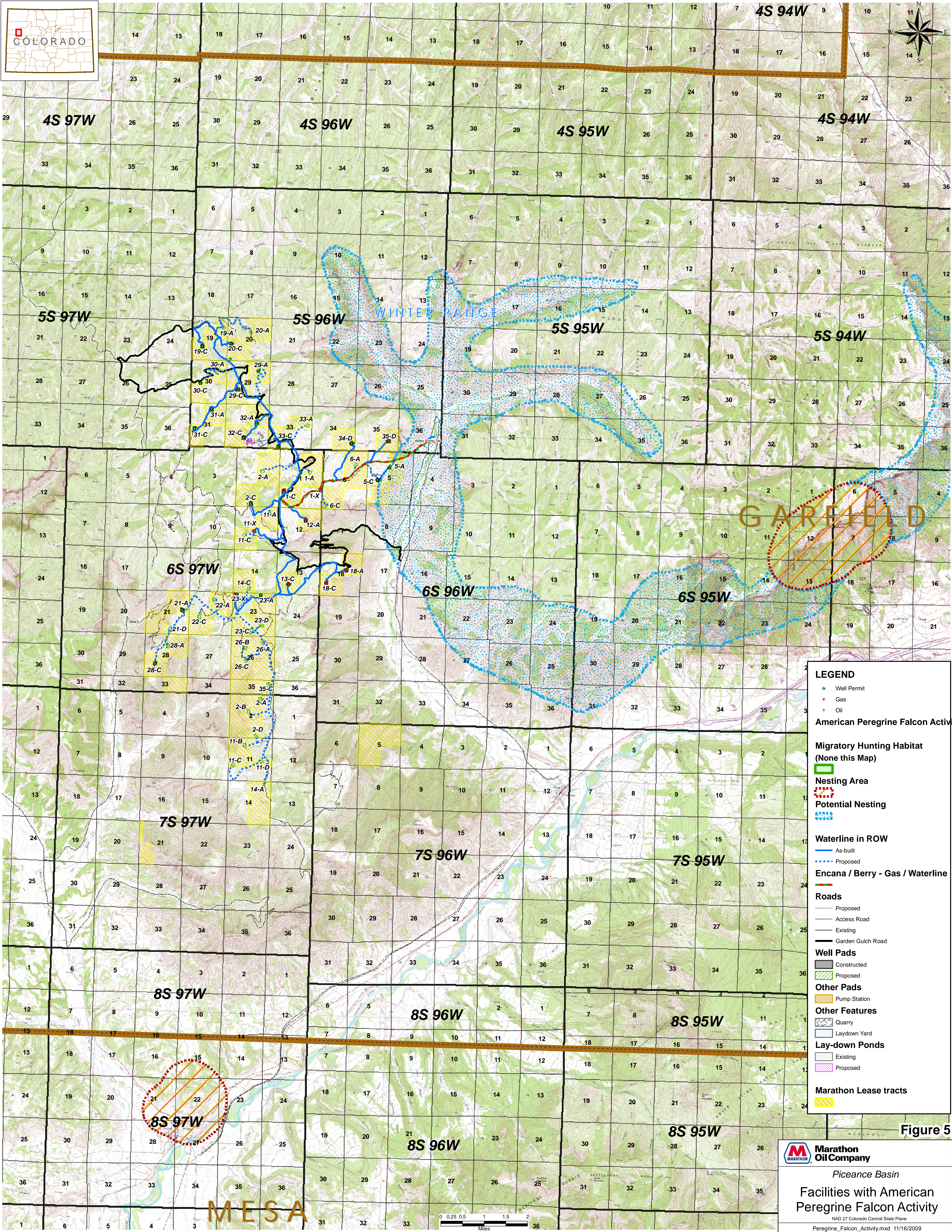
SURVEYING CONSULTANTS
2000 WEST 28200 NORTH
DENVER, COLORADO 80231
PHONE: 303-775-3000
FAX: 303-775-3000
WWW.WILLIAMHSMITH.COM

SECS. 19, 20, 29, 32 & 33, T5S, R96W, SEC.
18, T6S, R96W, SECS. 1, 12, 13, 21, 22, 23,
24 & 28, T6S, R97W, GARFIELD CO., COLORADO

MARATHON OIL COMPANY

DATE: 12/03/2008 JOB NO: 26099 SHEET 1 OF 12





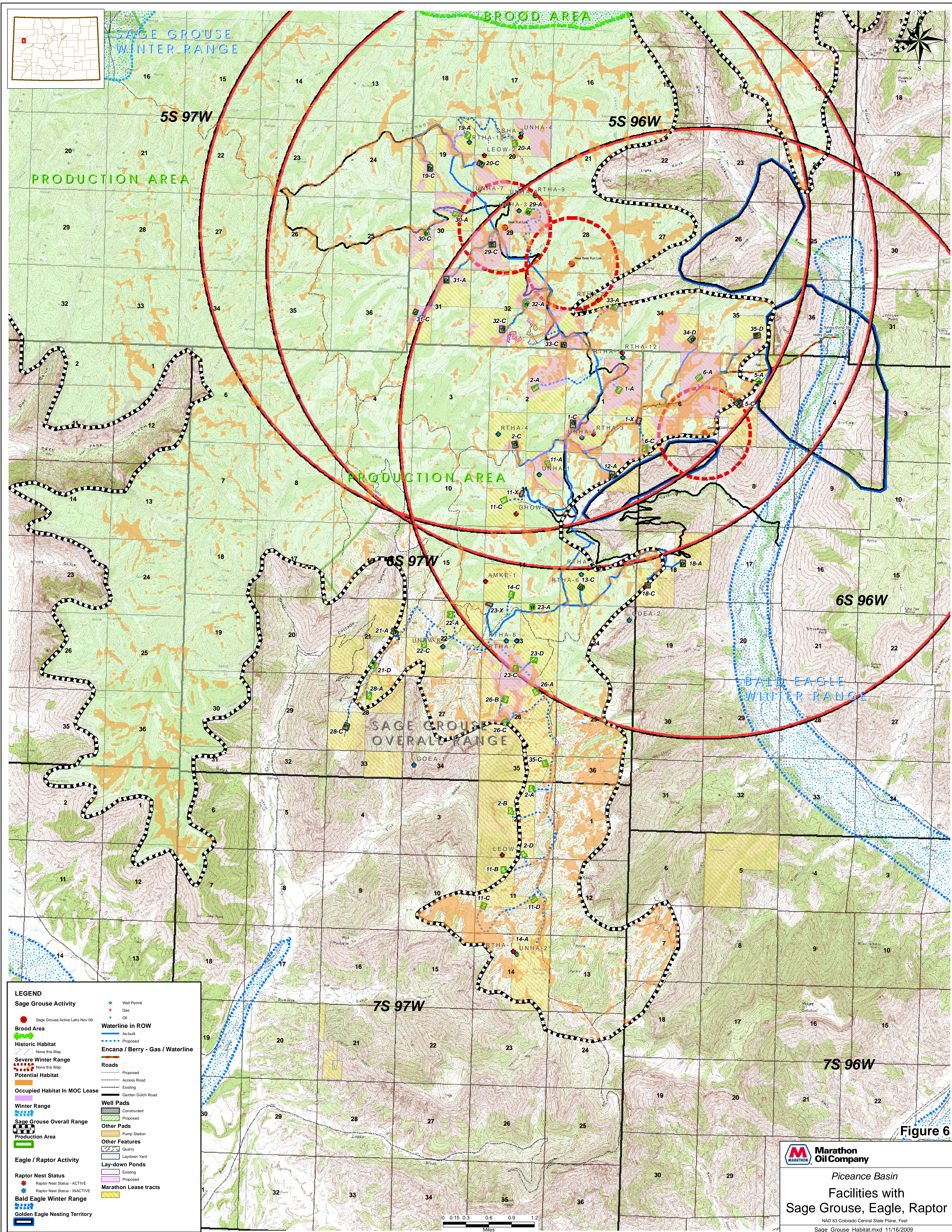
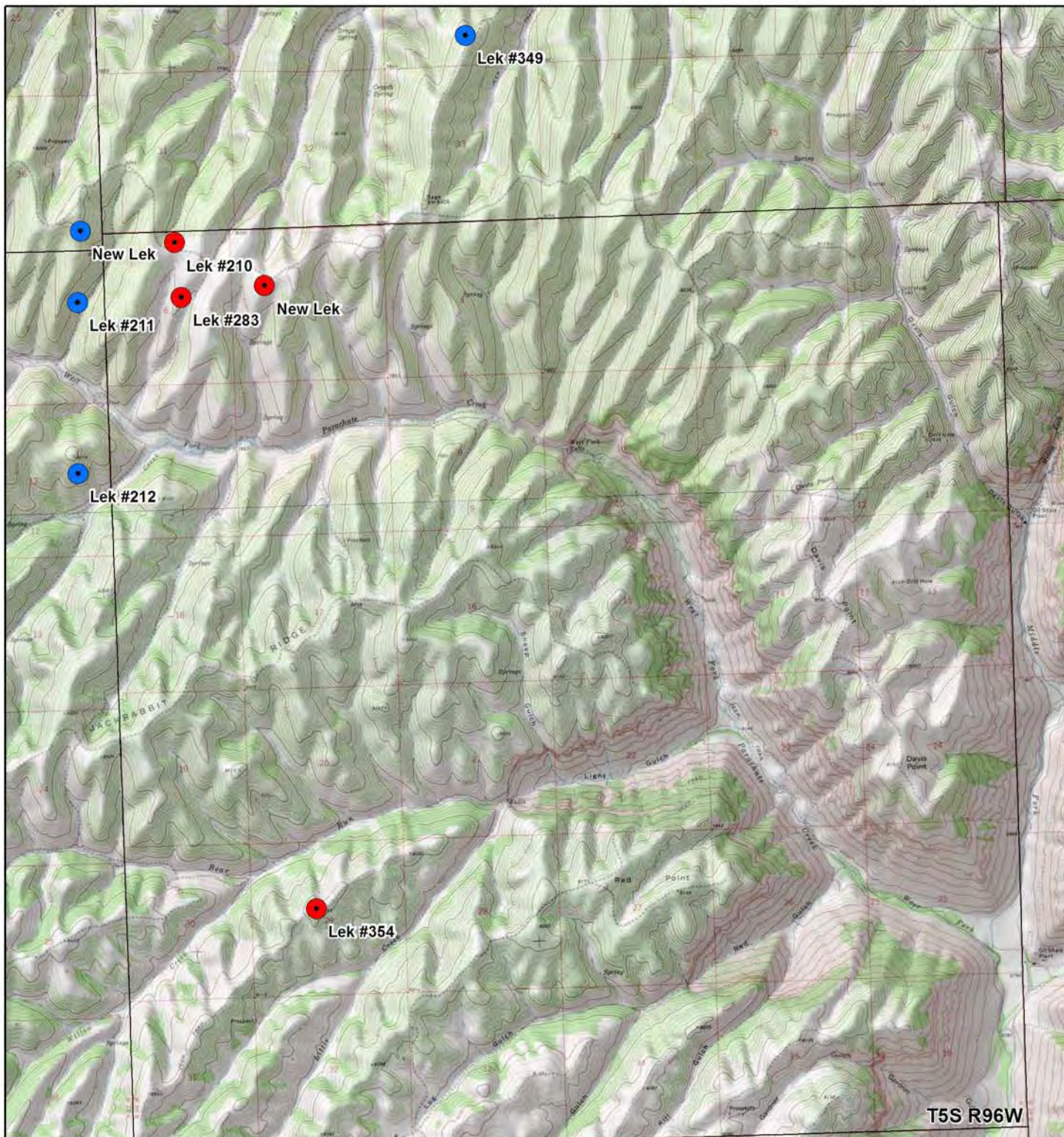


Figure 6



DOW Greater Sage-grouse Lek Sites 2006

WestWater Engineering
September 2006

Legend

- Active Grouse Leks (2006)
- Inactive Grouse Leks (2006)

