

T7N, R65W, 6th P.M.

GREAT WESTERN OIL & GAS COMPANY

Well location, SCHMUNK EF 31-369HN, located as shown in the NW 1/4 NE 1/4 of Section 31, T7N, R65W, 6th P.M., Weld County, Colorado.

BASIS OF ELEVATION

USGS COOPERATIVE BASE NETWORK CONTROL STATION, DESIGNATION "VERMILYEA". NGS DATA SHEET LISTS THE NAVD 88 ELEVATION AS BEING 5026 FEET.

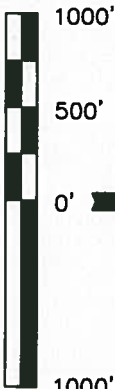
BASIS OF BEARINGS

BASIS OF BEARINGS IS A G.P.S. OBSERVATION.

LEGEND:

- 90° SYMBOL
- PROPOSED WELL HEAD.
- ENTRY POINT
- TARGET BOTTOM HOLE.
- SECTION CORNERS LOCATED.
- SECTION CORNERS RE-ESTABLISHED. (Not Set on Ground.)

| LINE TABLE |             |         |
|------------|-------------|---------|
| LINE       | DIRECTION   | LENGTH  |
| L1         | N76°30'07"W | 325.11' |



CERTIFICATE

THIS IS TO CERTIFY THAT THE ABOVE COPY WAS PREPARED FROM FIELD NOTES OF ACTUAL SURVEY MADE BY ME OR UNDER MY SUPERVISION AND THAT THE SAME ARE TRUE AND CORRECT TO THE BEST OF MY KNOWLEDGE AND BELIEF.

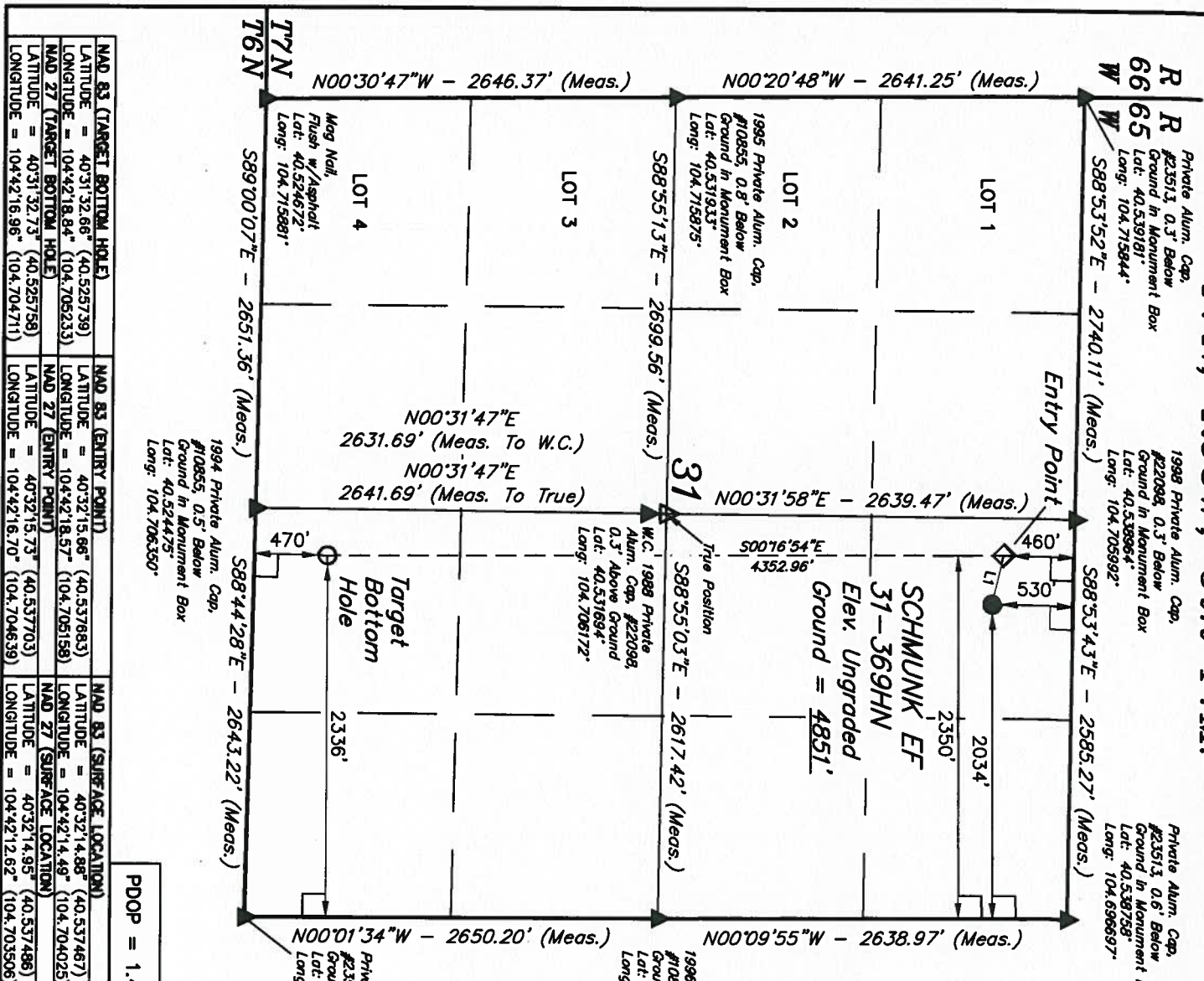
REGISTERED LAND SURVEYOR  
REGISTRATION NO. 28285  
STATE OF COLORADO  
10-22-13 J.W.

REVISED: 10-22-13 J.W.

UINTAH ENGINEERING & LAND SURVEYING  
86 SOUTH 200 EAST - VERNAL, UTAH 84078  
(435) 789-1017

| SCALE      | DATE SURVEYED: | DATE DRAWN: |
|------------|----------------|-------------|
| 1" = 1000' | 09-03-13       | 09-09-13    |

| PARTY            | REFERENCES                      |
|------------------|---------------------------------|
| Z.B. A.G. H.K.W. | G.L.O. PLAT                     |
| WEATHER          | FILE                            |
| HOT              | GREAT WESTERN OIL & GAS COMPANY |



PDOP = 1.4