

1801 Broadway
Suite 500
Denver, Colorado 80202



Shannon Hartnett
Regulatory Compliance Specialist
Tel: 303.398.0351
E-mail: shartnett@gwogco.com

December 5, 2013

Colorado Oil and Gas Conservation Commission
1120 Lincoln Street, Suite 801
Denver, Colorado 80203

RE: **Proposed Wellbore Spacing Unit**
Schmunk EF 31-361HN

Niobrara New Drill
Township 7 North, Range 65 West, 6th P.M.
Section 31
Weld County, Colorado

Dear Director:

Great Western Operating Company, LLC is planning to drill the above captioned well in accordance with the provisions of COGCC Rule 318(l)e(2).

Great Western proposed wellbore spacing unit consists of:

- **E/2E/2 Section 31 and W/2W/2 Section 32 T7N-R65W**

The 30 day notification time has passed and we have not received any objections to such well locations or proposed spacing unit, therefore Great Western hereby requests the Director to approve the above mentioned well. Great Western Operating Company, LLC respectfully requests that the COGCC review the enclosed map illustrating the proposed wellbore spacing unit.

Respectfully,

A handwritten signature in blue ink that reads "Shannon Hartnett".

Shannon Hartnett
Regulatory Compliance Specialist
Great Western Operating Company, LLC

T7N, R65W, 6th P.M.

GREAT WESTERN OIL & GAS COMPANY

Well location, SCHMUNK EF 31-361HN, located as shown in the NW 1/4 NE 1/4 of Section 31, T7N, R65W, 6th P.M., Weld County, Colorado.

BASIS OF ELEVATION

USGS COOPERATIVE BASE NETWORK CONTROL STATION, DESIGNATION "VERMILYEA". NGS DATA SHEET LISTS THE NAVD 88 ELEVATION AS BEING 5026 FEET.

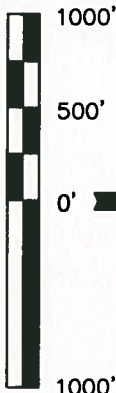
BASIS OF BEARINGS

BASIS OF BEARINGS IS A G.P.S. OBSERVATION.

LEGEND:

- ◻ = 90° SYMBOL
- = PROPOSED WELL HEAD.
- ◇ = ENTRY POINT
- = TARGET BOTTOM HOLE.
- ▲ = SECTION CORNERS LOCATED.
- △ = SECTION CORNERS RE-ESTABLISHED. (Not Set on Ground.)

LINE TABLE		
LINE	DIRECTION	LENGTH
L1	N89°03'11"E	1853.16'



SCALE

CERTIFICATE

THIS IS TO CERTIFY THAT THE ABOVE DATA WAS PREPARED FROM FIELD NOTES OF ACTUAL SURVEY ORIGIN, AND THAT THE SAME ARE TRUE AND CORRECT TO THE BEST OF MY KNOWLEDGE AND BELIEF.

REGISTERED LAND SURVEYOR
REGISTRATION NO. 28285
STATE OF COLORADO
JUL 10 2005

REVISED: 10-22-13 J.W.

UTAH ENGINEERING & LAND SURVEYING

85 SOUTH 200 EAST - VERNAL, UTAH 84078

(435) 789-1017

SCALE 1" = 1000'

PARTY Z.B. A.G. H.K.W.

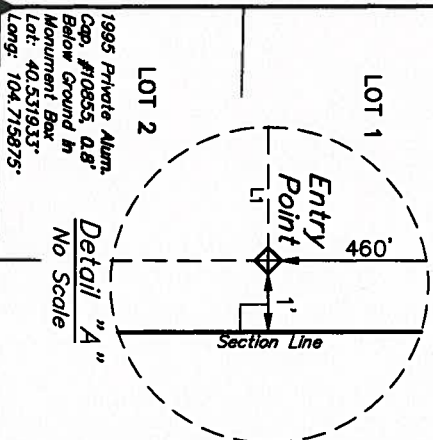
WEATHER HOT

FILE GREAT WESTERN OIL & GAS COMPANY

R Private Alum. Cap.
#23513, 0.3' Below
Ground in Monument Box
Lat: 40.539181°
Long: 104.715844°
W 66 65
S88°53'52"E - 2740.11' (Meas.)

Private Alum. Cap.
#23513, 0.6' Below
Ground in Monument Box
Lat: 40.539258°
Long: 104.696697°

N00°20'48"W - 2641.25' (Meas.)



N00°31'58"E - 2639.47' (Meas.)

SCHMUNK EF
31-361HN
Elev. Ungraded
Ground = 4854'

True Position
S88°55'03"E - 2617.42' (Meas.)

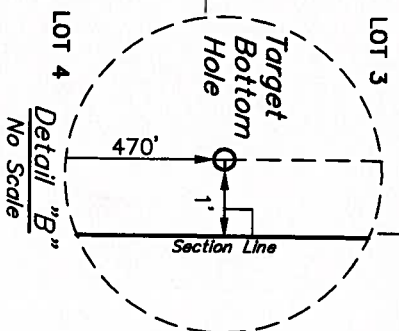
1996 Private Alum. Cap.
#10855, 0.3' Below
Ground in Monument Box
Lat: 40.531517°
Long: 104.696761°

1995 Private Alum.
Cap. #10855, 0.8' Below
Ground in Monument Box
Lat: 40.531933°
Long: 104.715875°

S88°55'13"E - 2699.56' (Meas.)

W.C. 1998 Private Alum. Cap. #22098, 0.3' Above Ground
Lat: 40.531894°
Long: 104.706172°

N00°30'47"W - 2646.37' (Meas.)



N00°31'47"E
2631.69' (Meas. To W.C.)
N00°31'47"E
2641.69' (Meas. To True)

S00°05'44"E - 4358.93' (To Target Bottom Hole)

N00°01'34"W - 2650.20' (Meas.)

Private Alum. Cap.
#23501, 0.3' Below
Ground in Monument Box
Lat: 40.524247°
Long: 104.696850°

T7N
T6N

S89°00'07"E - 2651.36' (Meas.)

S88°44'28"E - 2643.22' (Meas.)

Mog Natl.
Fush w/Asphalt
Lat: 40.524672°
Long: 104.715881°

1994 Private Alum. Cap.
#10855, 0.5' Below
Ground in Monument Box
Lat: 40.524475°
Long: 104.706350°

NAD 83 (TARGET BOTTOM HOLE)
LATITUDE = 40°31'31.83" (40.525536)
LONGITUDE = 104°41'48.62" (104.696839)
NAD 27 (TARGET BOTTOM HOLE)
LATITUDE = 40°31'32.00" (40.525556)
LONGITUDE = 104°41'46.74" (104.696317)

NAD 83 (ENTRY POINT)
LATITUDE = 40°32'14.99" (40.537487)
LONGITUDE = 104°41'48.17" (104.696714)
NAD 27 (ENTRY POINT)
LATITUDE = 40°32'15.06" (40.537517)
LONGITUDE = 104°41'46.29" (104.696192)

NAD 83 (SURFACE LOCATION)
LATITUDE = 40°32'14.86" (40.537461)
LONGITUDE = 104°42'12.16" (104.703376)
NAD 27 (SURFACE LOCATION)
LATITUDE = 40°32'14.93" (40.537481)
LONGITUDE = 104°42'10.28" (104.702856)

PDOP = 1.9