

GREAT WESTERN OIL & GAS COMPANY

Private Alum. Cap,  
#23513, 0.6' Below  
Ground in Monumens  
Lot: 40.538758°  
Long: 104.696697°

Well location, SCHMUNK EF 31-361HN, located as shown in the NW 1/4 NE 1/4 of Section 31, T7N, R65W, 6th P.M., Weld County, Colorado.

## BASIS OF ELEVATION

USGS COOPERATIVE BASE NETWORK CONTROL STATION, DESIGNATION "VERMILYEA". NGS DATA SHEET LISTS THE NAVD 88 ELEVATION AS BEING 5026 FEET.

# BASIS OF BEARINGS

**BASIS OF BEARINGS IS A G.P.S. OBSERVATION.**

**LEGEND:**

**= 90° SYMBOL**

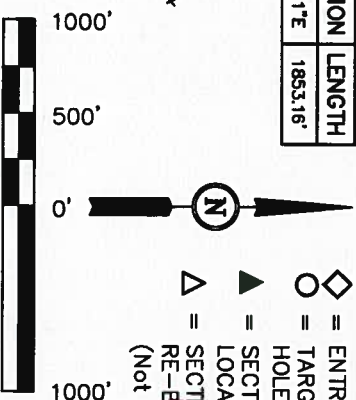
HEAD.

◆ = ENTRY POINT  
○ = TARGET BOTTOM

▲ = SECTION CORNERS LOCATED.

$\Delta$  = SECTION CORNERS  
RE-ESTABLISHED,  
(Not Set on Ground.)

LINE TABLE		
LINE	DIRECTION	LENGTH
L1	N89°03'11"E	1853.16'



THIS IS TO CERTIFY THAT THE ABOVE PLAN WAS PREPARED FROM FIELD NOTES OF ACTUAL SURVEYS MADE BY ME OR UNDER MY SUPERVISION AND THAT THE SAME ARE TRUE AND CORRECT TO THE BEST OF MY KNOWLEDGE AND BELIEF.

REVISED: 10-22-13 J.W.

UNTAH ENGINEERING &amp; LAND SURVEYING

85 SOUTH 200 EAST - VERNAL, UTAH 84078

(435) 789-1017

**PDOP = 1.9**

SCALE 1" = 1000'

DATE SURVEYED:	DATE DRAWN:
----------------	-------------

1" = 1000'

DATE RECEIVED: 09-03-13

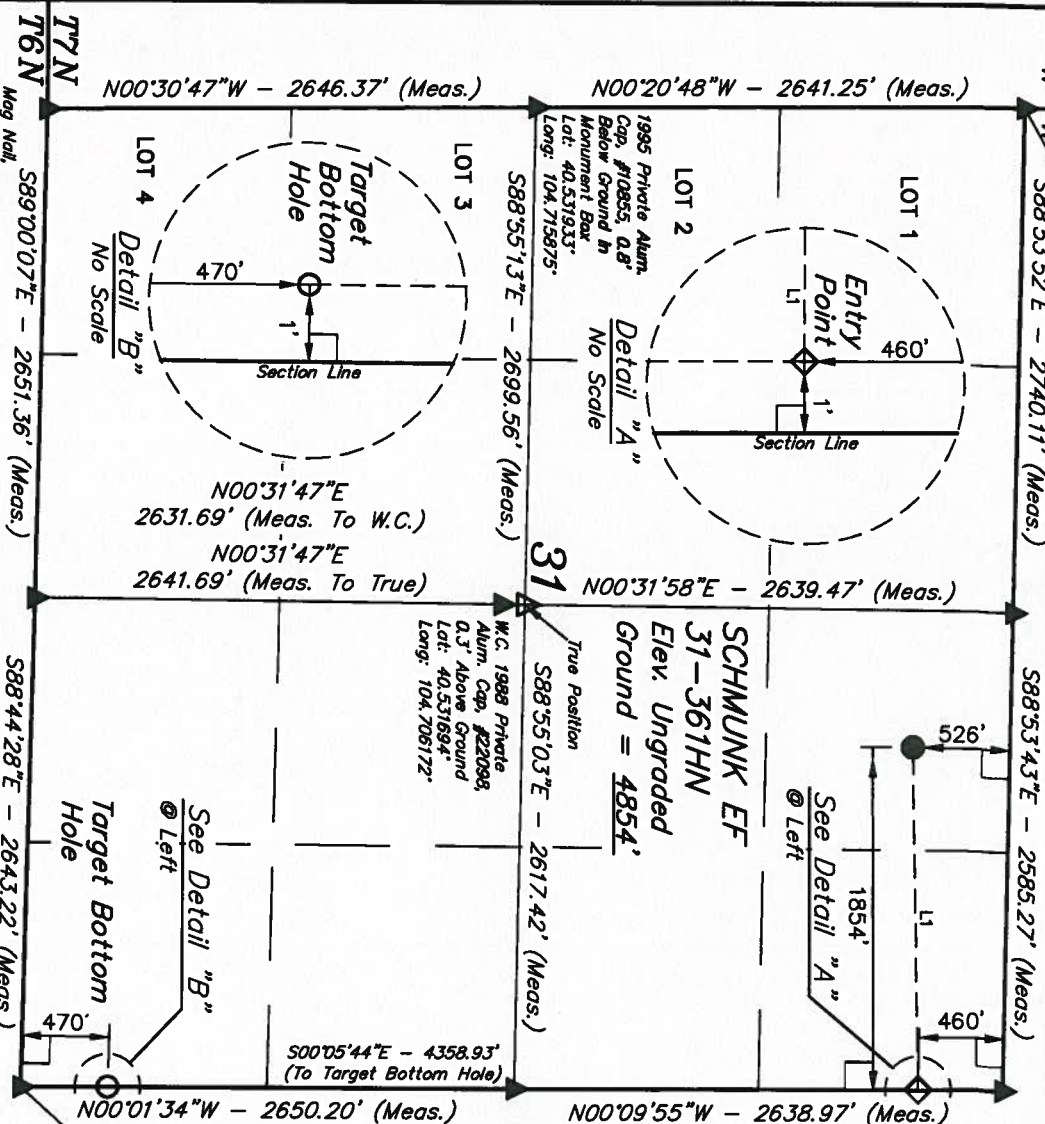
DATE DRAWN: 09-09-13

Z.B. A.G. H.K.W.

## REFERENCES

WEATHER

FILE	CPBAT WESTERN
------	---------------



1996 Private Alum. Cap,  
#10855, 0.3' Below  
Ground in Monument Box  
Lat: 40.531517°  
Long: 104.696761°

RECEIVED  
REGISTERED LAND SURVEYOR  
REGISTRATION NO. 20295  
STATE OF COLORADO

APR 28 2006

RECEIVED  
REGISTERED LAND SURVEYOR  
REGISTRATION NO. 20295  
STATE OF COLORADO