

T7N, R65W, 6th P.M.

GREAT WESTERN OIL & GAS COMPANY

R65W
Private Alum. Cap.
#23513, 0.3' Below
Ground in Monument Box
Lat: 40.539181°
Long: 104.715844°

R65W
1998 Private Alum. Cap.
#22098, 0.3' Below
Ground in Monument Box
Lat: 40.538964°
Long: 104.705992°

R65W
Private Alum. Cap.
#23513, 0.6' Below
Ground in Monument Box
Lat: 40.538759°
Long: 104.696637°

Well location, SCHMUNK EF 31-367HN, located as shown in the NW 1/4 NE 1/4 of Section 31, T7N, R65W, 6th P.M., Weld County, Colorado.

BASIS OF ELEVATION

USGS COOPERATIVE BASE NETWORK CONTROL STATION, DESIGNATION "VERMILYEA". NGS DATA SHEET LISTS THE NAVD 88 ELEVATION AS BEING 5026 FEET.

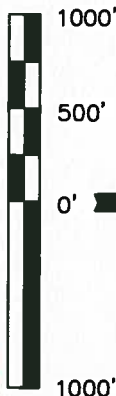
BASIS OF BEARINGS

BASIS OF BEARINGS IS A G.P.S. OBSERVATION.

LEGEND:

- └─ = 90° SYMBOL
- = PROPOSED WELL HEAD.
- ◇ = ENTRY POINT
- = TARGET BOTTOM HOLE.
- ▲ = SECTION CORNERS LOCATED.
- △ = SECTION CORNERS RE-ESTABLISHED. (Not Set on Ground.)

LINE TABLE		
LINE	DIRECTION	LENGTH
L1	N75°45'59"E	258.86'



CERTIFICATE

THIS IS TO CERTIFY THAT THE ABOVE MAP WAS PREPARED FROM FIELD NOTES OF ACTUAL SURVEY MADE BY ME OR UNDER MY SUPERVISION AND THAT THE SAME ARE TRUE AND CORRECT TO THE BEST OF MY KNOWLEDGE AND BELIEF.

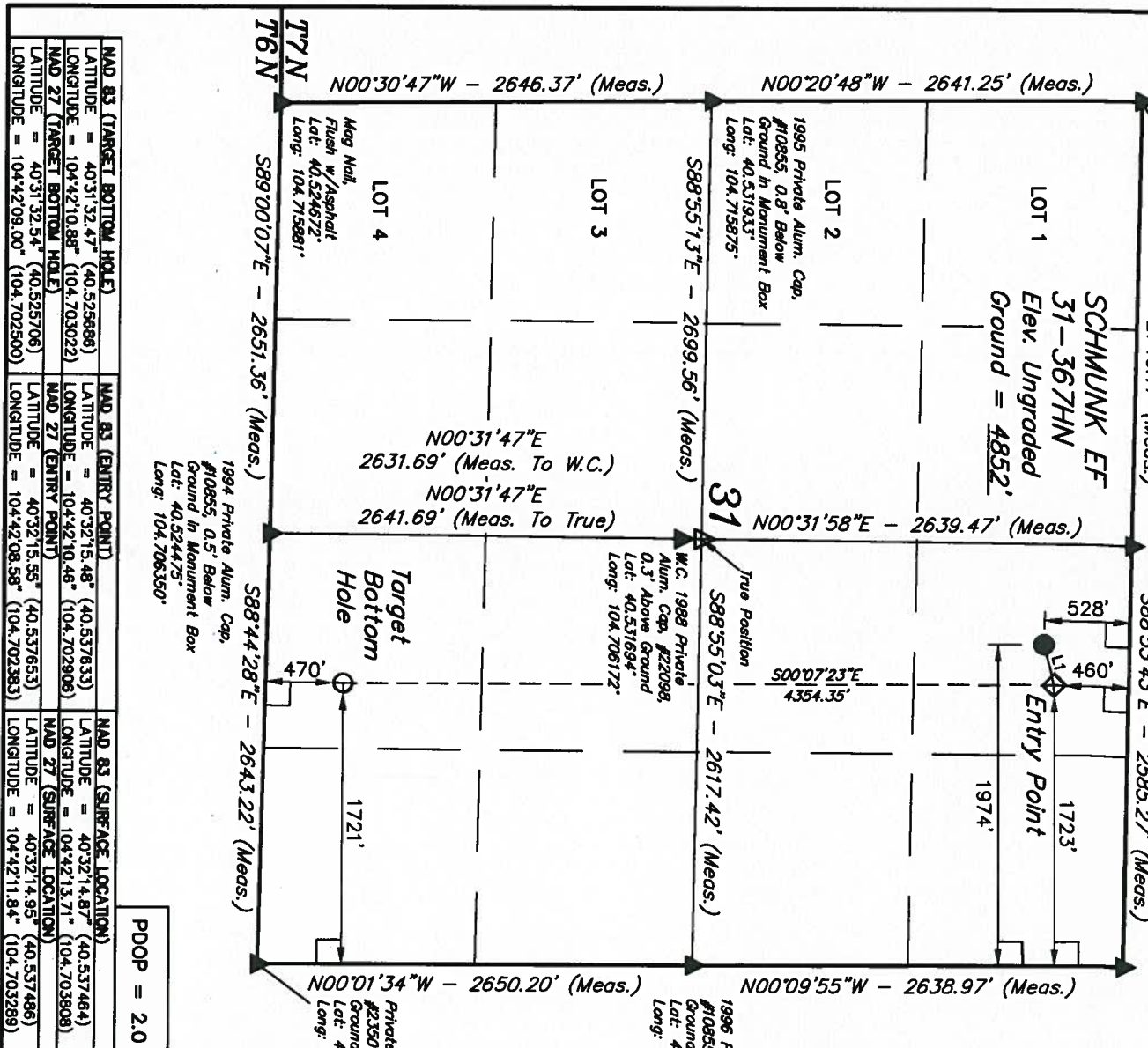
REGISTERED LAND SURVEYOR
REGISTRATION NO. 28285
STATE OF COLORADO
JULY 10, 2008

REVISED: 10-22-13 J.W.

UNTAR ENGINEERING & LAND SURVEYING
85 SOUTH 200 EAST - VERNAL, UTAH 84078
(435) 789-1017

SCALE	DATE SURVEYED:	DATE DRAWN:
1" = 1000'	09-03-13	09-09-13

PARTY	REFERENCES	FILE
Z.B. A.G. H.K.W.	G.L.O. PLAT	GREAT WESTERN OIL & GAS COMPANY
WEATHER		
HOT		



PDOP = 2.0