

1801 Broadway  
Suite 500  
Denver, Colorado 80202



Shannon Hartnett  
Regulatory Compliance Specialist  
Tel: 303.398.0351  
E-mail: shartnett@gwogco.com

November 11, 2013

Colorado Oil and Gas Conservation Commission  
1120 Lincoln Street, Suite 801  
Denver, Colorado 80203

RE: **Proposed Wellbore Spacing Unit**  
Kodak FD 27-019HN

Niobrara New Drill  
Township 6 North, Range 67 West, 6<sup>th</sup> P.M.  
Section 26  
Weld County, Colorado

Dear Director:

Great Western Operating Company, LLC is planning to drill the above captioned well in accordance with the provisions of COGCC Rule 318(l)e(2).

Great Western proposed wellbore spacing unit consists of:

**N/2N/2 Sec 27**  
**S/2S/2 Sec 22**  
**S/2SW/4 Sec 23**  
**N/2NW/4 Sec 26**  
**T6N-R67W (480 acres)**

Great Western Operating Company, LLC respectfully requests that the COGCC review the enclosed map illustrating the proposed wellbore spacing unit.

Respectfully,

A handwritten signature in blue ink that reads "Shannon Hartnett". The signature is written in a cursive, flowing style.

Shannon Hartnett  
Regulatory Compliance Specialist  
Great Western Operating Company, LLC

T6N, R67W, 6th P.M.

GREAT WESTERN OIL & GAS COMPANY

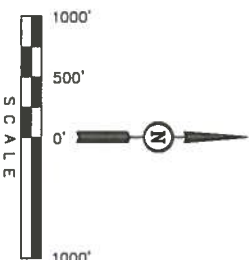
Well location, KODAK NORTH FD 27-019HN,  
located as shown in the SE 1/4 NW 1/4 of  
Section 26, T6N, R67W, 6th P.M., Weld County,  
Colorado.

BAISIS OF ELEVATION

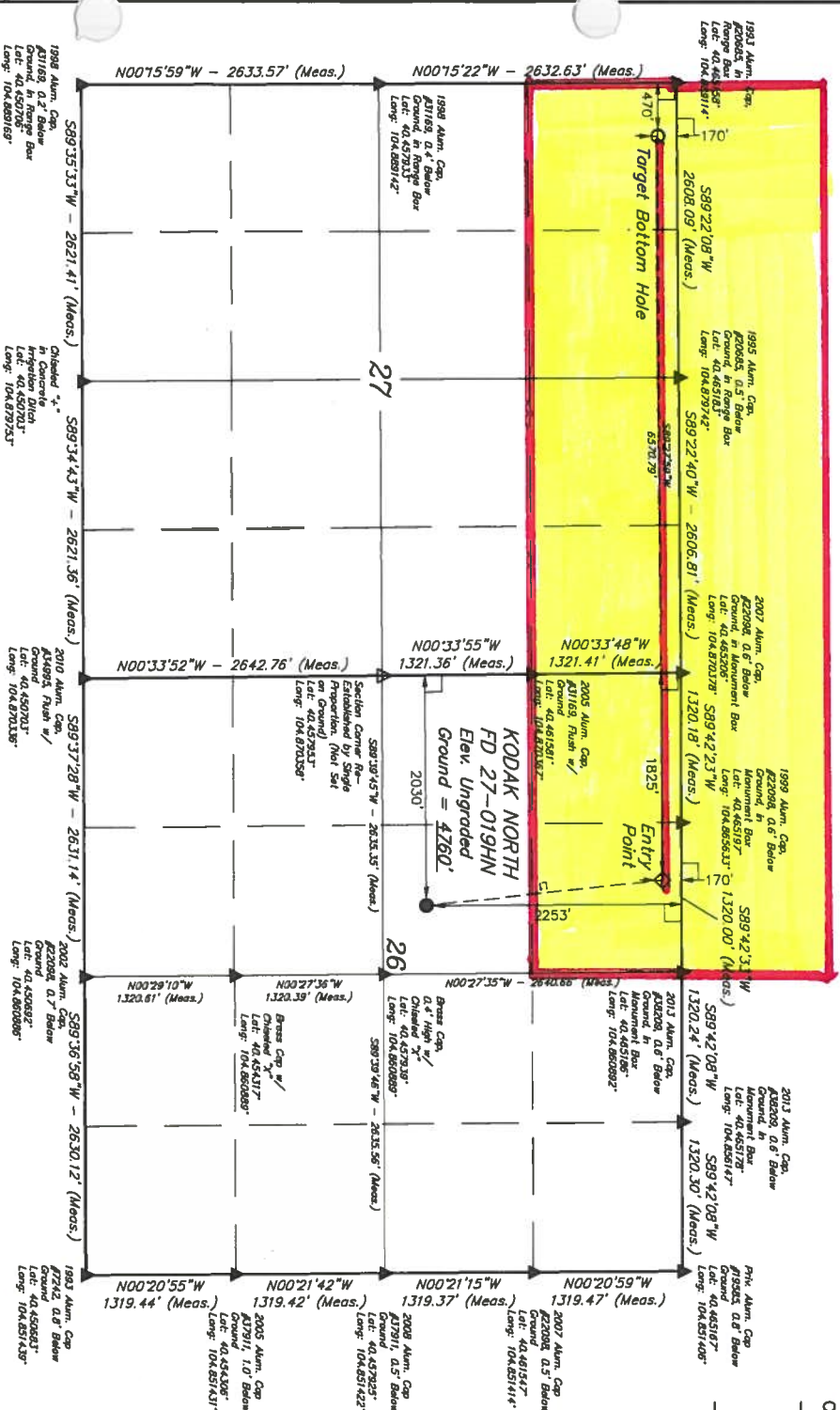
USGS COOPERATIVE BASE NETWORK CONTROL STATION,  
DESIGNATION 'VERMIL YEA', NGS DATA SHEET USTS THE  
NAVD 88 ELEVATION AS BEING 5028 FEET

BAISIS OF BEARINGS

BAISIS OF BEARINGS IS A G.P.S. OBSERVATION.



LINE TABLE	
LINE	DIRECTION LENGTH
1	N00°10'34"W 203.64'



LEGEND:

- 90° SYMBOL
- PROPOSED WELL HEAD.
- TARGET BOTTOM HOLE.
- ◇ ENTRY POINT.
- ▲ SECTION CORNERS LOCATED.
- △ SECTION CORNERS RE-ESTABLISHED. (Not Set on Ground.)

NAD 83 TARGET BOTTOM HOLE	
POINT	POINT
LONGITUDE = 40°27'52.00" (40.464894)	LONGITUDE = 40°27'52.00" (40.464894)
LONGITUDE = 104°53'14.74" (104.887429)	LONGITUDE = 104°53'14.74" (104.887429)
NAD 83 ENTRY POINT	
POINT	POINT
LONGITUDE = 40°27'52.00" (40.464894)	LONGITUDE = 40°27'52.00" (40.464894)
LONGITUDE = 104°53'14.74" (104.887429)	LONGITUDE = 104°53'14.74" (104.887429)
NAD 83 SURFACE LOCATION	
POINT	POINT
LONGITUDE = 40°27'52.00" (40.464894)	LONGITUDE = 40°27'52.00" (40.464894)
LONGITUDE = 104°53'14.74" (104.887429)	LONGITUDE = 104°53'14.74" (104.887429)

UNITAH ENGINEERING & LAND SURVEYING  
86 SOUTH 200 EAST - VERNAL UTAH 84078  
(435) 789-1017

SCALE: 1" = 1000'

DATE SURVEYED: 10-21-13 DATE DRAWN: 10-30-13

PARTY: D.N. C.M. G.W. J.W.

WEATHER: COOL

FILE: GREAT WESTERN OIL & GAS COMPANY



THIS IS TO CERTIFY THAT THE ABOVE IS A TRUE AND CORRECT COPY OF THE ORIGINAL SURVEY RECORDS AND THAT THE SURVEY WAS CONDUCTED IN ACCORDANCE WITH THE RULES AND REGULATIONS OF THE BOARD OF LAND SURVEYING, STATE OF UTAH.