

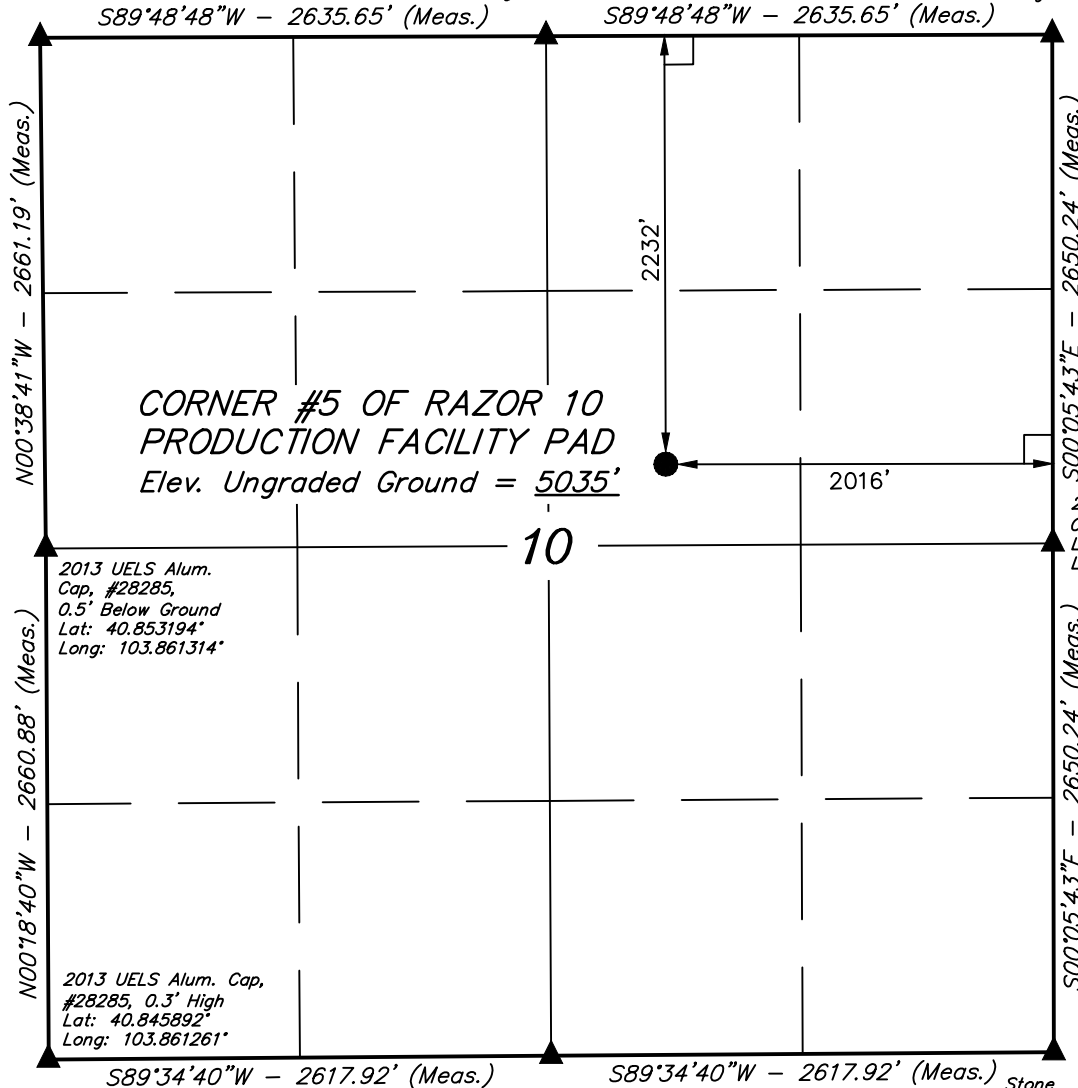
T10N, R58W, 6th P.M.

WHITING OIL & GAS CORP.

2013 UELS Alum. Cap,
#28285, 0.5' Below Ground
Lat: 40.860494°
Long: 103.861425°

2013 UELS Alum. Cap,
#28285, 0.3' High
Lat: 40.860519°
Long: 103.851900°

2012 UELS Alum.
Cap, 0.3' High
Lat: 40.860544°
Long: 103.842372°



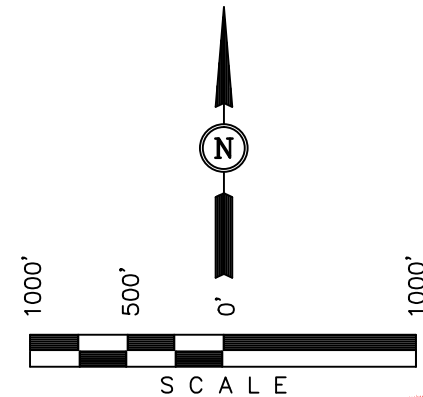
Production Facility location, CORNER #5 OF RAZOR 10 PRODUCTION FACILITY PAD, located as shown in the SW 1/4 NE 1/4 of Section 10, T10N, R58W, 6th P.M., Weld County, Colorado.

BASIS OF ELEVATION

SPOT ELEVATION LOCATED AT THE NORTHEAST CORNER OF SECTION 15, T9N, R58W, 6th P.M. TAKEN FROM THE GATEHOOK SPRING, QUADRANGLE, COLORADO, WELD COUNTY, 7.5 MINUTE QUAD (TOPOGRAPHIC MAP) PUBLISHED BY THE UNITED STATES DEPARTMENT OF THE INTERIOR, GEOLOGICAL SURVEY. SAID ELEVATION IS MARKED AS BEING 4679 FEET.

BASIS OF BEARINGS

BASIS OF BEARINGS IS A G.P.S. OBSERVATION.



CERTIFICATION

THIS IS TO CERTIFY THAT THE ABOVE PLAT WAS PREPARED FROM FIELD NOTES OF ACTUAL SURVEYS MADE BY ME OR UNDER MY SUPERVISION AND THAT THE SAME ARE TRUE AND CORRECT TO THE BEST OF MY KNOWLEDGE AND BELIEF.

REGISTERED LAND SURVEYOR
REGISTRATION NO. 28285
STATE OF COLORADO 08-30-13

LEGEND:

- └─┘ = 90° SYMBOL
- = PROPOSED CORNER #5.
- ▲ = SECTION CORNERS LOCATED.

PDOP = 1.3

NAD 83 (CORNER #5 OF RAZOR 10 PRODUCTION FACILITY PAD)	
LATITUDE =	40°51'15.84" (40.854400)
LONGITUDE =	103°50'58.72" (103.849644)
NAD 27 (CORNER #5 OF RAZOR 10 PRODUCTION FACILITY PAD)	
LATITUDE =	40°51'15.89" (40.854414)
LONGITUDE =	103°50'56.91" (103.849142)

UINTAH ENGINEERING & LAND SURVEYING
85 SOUTH 200 EAST - VERNAL, UTAH 84078
(435) 789-1017

SCALE 1" = 1000'	DATE SURVEYED: 08-28-13	DATE DRAWN: 08-30-13
PARTY J.H. C.M. J.S.	REFERENCES G.L.O. PLAT	
WEATHER HOT	FILE WHITING OIL & GAS CORP.	