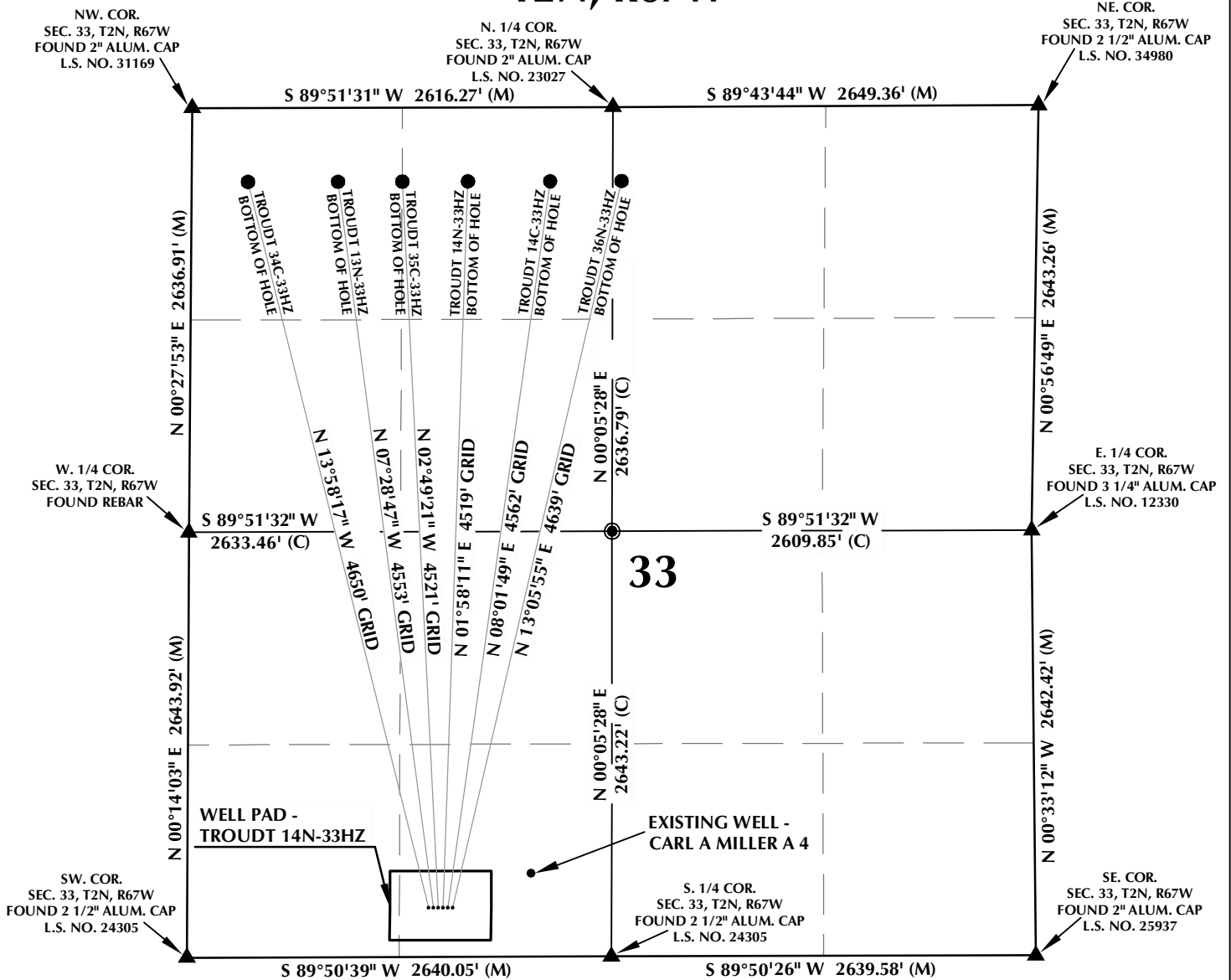


TROUDT 14N-33HZ T2N, R67W



WELL NOTES:

TROUDT 34C-33HZ
SURFACE: 305' FSL, 1500' FWL
BOTTOM HOLE: 460' FNL, 350' FWL

TROUDT 13N-33HZ
SURFACE: 305' FSL, 1530' FWL
BOTTOM HOLE: 460' FNL, 910' FWL

TROUDT 35C-33HZ
SURFACE: 305' FSL, 1560' FWL
BOTTOM HOLE: 460' FNL, 1310' FWL

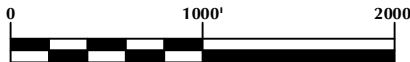
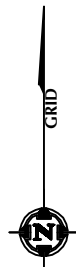
TROUDT 14N-33HZ
SURFACE: 305' FSL, 1590' FWL
BOTTOM HOLE: 460' FNL, 1718' FWL

TROUDT 14C-33HZ
SURFACE: 304' FSL, 1620' FWL
BOTTOM HOLE: 460' FNL, 2230' FWL

TROUDT 36N-33HZ
SURFACE: 304' FSL, 1650' FWL
BOTTOM HOLE: 460' FNL, 2587' FWL

NOTES:

- ▲ INDICATES FOUND SECTION CORNER
- INDICATES CALCULATED CORNER
- BASIS OF BEARING DERIVED FROM COLORADO COORDINATE SYSTEM 1983 NORTH ZONE UNLESS OTHERWISE NOTED.
- ALL MEASURED DISTANCES ARE GRID.
- COMBINED SCALE FACTOR: .99972392
- WELL FOOTAGES ARE MEASURED AT RIGHT ANGLES TO THE SECTION LINES.



SCALE: 1" = 1000'

WELL PAD - TROUDT 14N-33HZ

INTERFERENCE DIAGRAM
TROUDT 34C-33HZ, TROUDT 13N-33HZ,
TROUDT 35C-33HZ, TROUDT 14N-33HZ,
TROUDT 14C-33HZ & TROUDT 36N-33HZ
LOCATED IN SECTION 33
T2N, R67W, 6TH P.M.
WELD COUNTY, COLORADO

**Kerr-McGee Oil &
Gas Onshore L.P.**

1099 18th Street
Denver, Colorado 80202



CONSULTING, LLC

SHERIDAN OFFICE
2155 North Main Street
Sheridan, Wyoming 82801
Phone 307-674-0609

LOVELAND OFFICE
1635 Foxtrail Drive, Suite 204
Loveland, Colorado 80538
Phone 970-776-4331

DRAFTED BY:	APF	CHECKED BY:	BJR
DATE DRAFTED:	8/9/13	DATE SURVEYED:	7/10/13
REVISED:		FILE NAME:	13-61