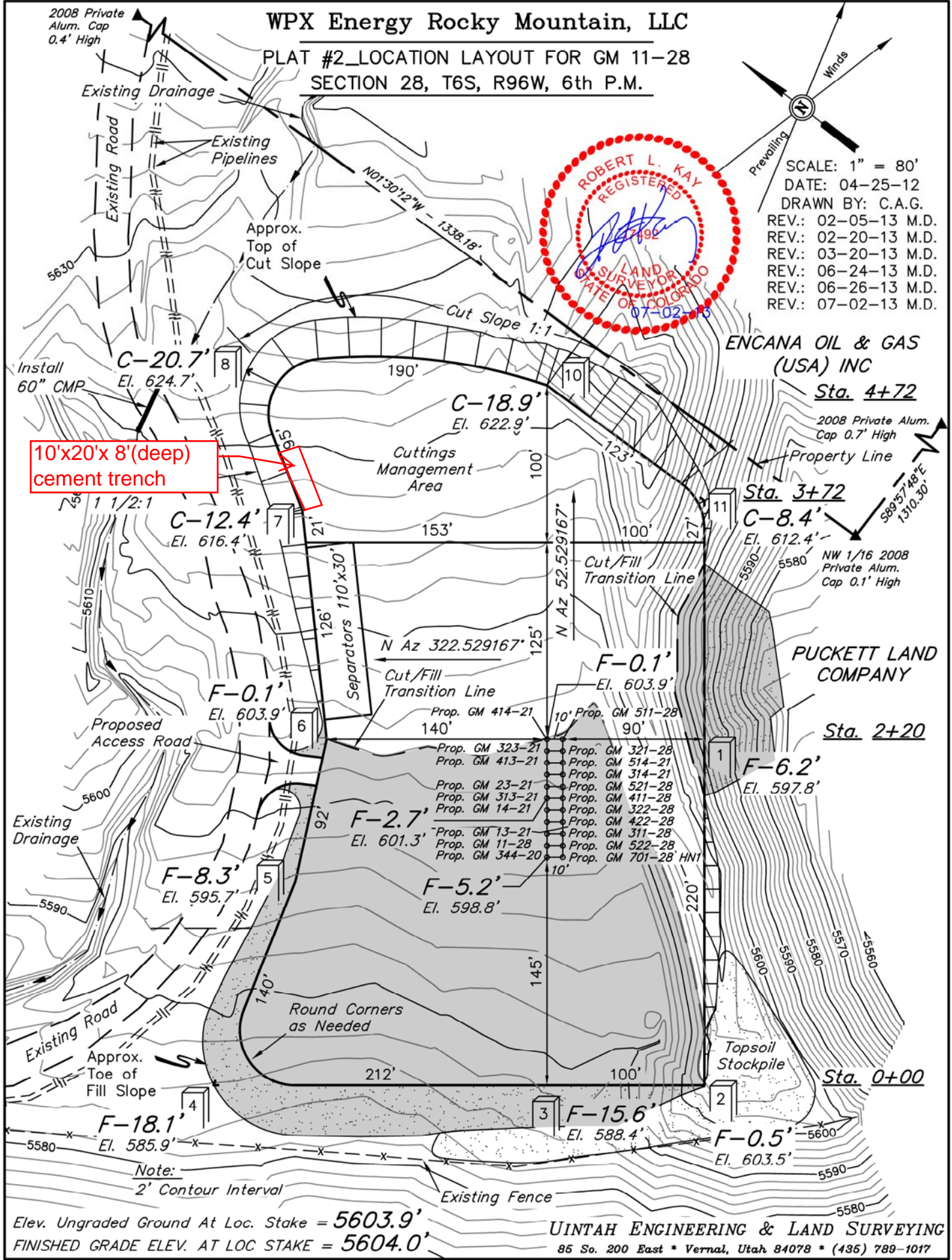


WPX Energy Rocky Mountain, LLC

PLAT #2_LOCATION LAYOUT FOR GM 11-28
SECTION 28, T6S, R96W, 6th P.M.



**10'x20'x 8'(deep)
cement trench**



SCALE: 1" = 80'
DATE: 04-25-12
DRAWN BY: C.A.G.
REV.: 02-05-13 M.D.
REV.: 02-20-13 M.D.
REV.: 03-20-13 M.D.
REV.: 06-24-13 M.D.
REV.: 06-26-13 M.D.
REV.: 07-02-13 M.D.

ENGANA OIL & GAS
(USA) INC

Sta. 4+72

Sta. 3+72

Sta. 2+20

Sta. 0+00

Elev. Ungraded Ground At Loc. Stake = 5603.9'
FINISHED GRADE ELEV. AT LOC STAKE = 5604.0'

UINTAH ENGINEERING & LAND SURVEYING
85 So. 200 East * Vernal, Utah 84078 * (435) 789-1017