

**ANADARKO PETROLEUM CORP - EBUS  
DO NOT MAIL - PO BOX 4995  
THE WOODLANDS, Texas**

D&C Farms 14N-33HZ

Major 42

## **Post Job Summary**

# **Cement Surface Casing**

Date Prepared: 09/23/2013  
Version: 1

Service Supervisor: OTERI, VAUGHN

Submitted by: HINDS, MOLLYE

**HALLIBURTON**

## ***Wellbore Geometry***

---

Job Tubulars					MD	
Type	Description	Size in	ID in	Wt lbm/ft	Top ft	Bottom ft
Casing	9 5/8" Surface Casing	9.63	8.921	36.00	0.00	1,051.00
Open Hole Section	13 1/2" Open Hole Section		13.500		0.00	1,051.00

## ***Pumping Schedule***

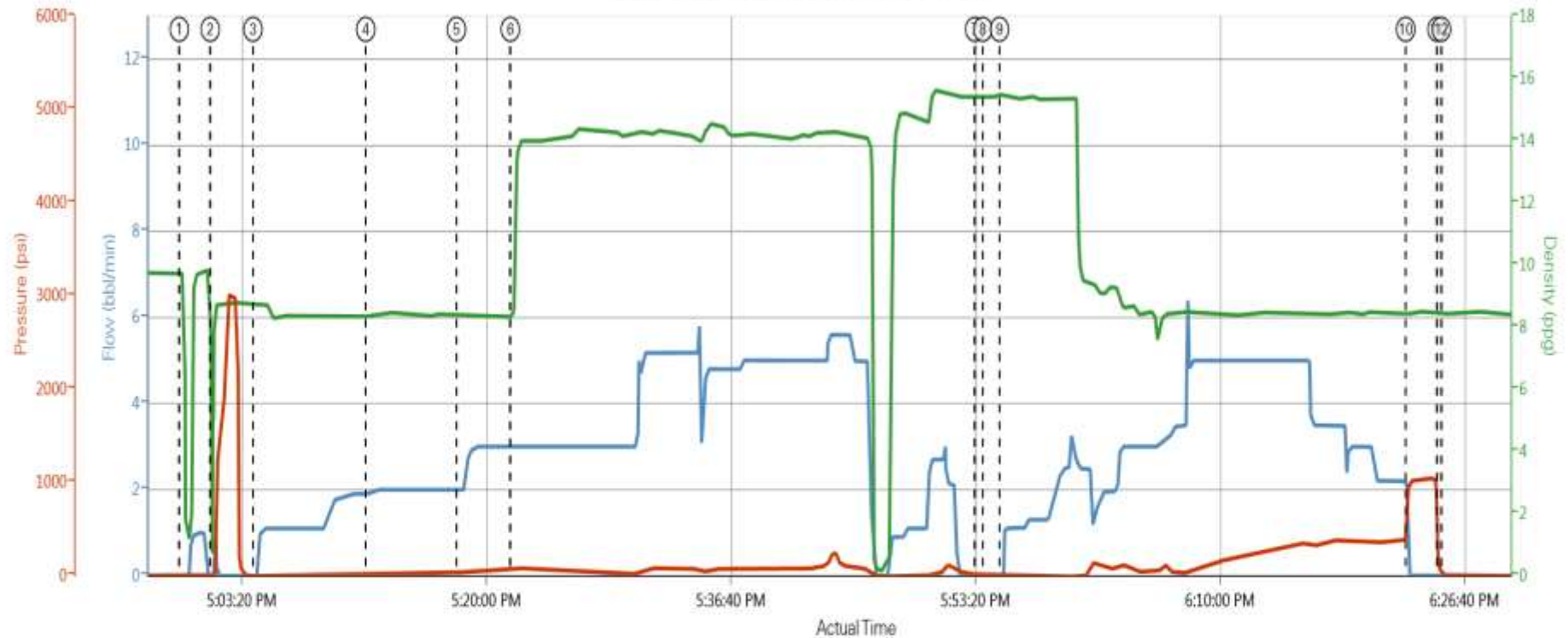
---

Stage /Plug #	Fluid #	Fluid Type	Fluid Name	Surface Density lbm/gal	Avg Rate bbl/min	Surface Volume	Downhole Volume
1	1	Spacer	Fresh Water Spacer	8.33	2.00	10.0 bbl	10.0 bbl
1	2	Spacer	Mud Flush	8.40	2.00	12.0 bbl	12.0 bbl
1	3	Spacer	Fresh Water Spacer	8.33	3.00	10.0 bbl	10.0 bbl
1	4	Cement Slurry	SwiftCem B2	14.20	5.00	395 sks	395.0 sks

# HALLIBURTON

## Data Acquisition

ANADARKO D&C FARMS 05-123-37894



Comb Pump Rate (bbl/min) DH Density (ppg) PS Pump Press (psi)

① Start Job 0,9 75,0	④ Pump Spacer 2 1,9 8 34,27	⑦ Shutdown 0,15 44,10	⑩ Bump Plug 0,8 41,969
② Test Lines 0,4 99,6	⑤ Pump Spacer 1 2,8 37,38	⑧ Drop Top Plug 0,15 38,9	⑪ Other 0,8 46,58
③ Pump Spacer 1 0,8 78,5	⑥ Pump Lead Cement 3,8 38,68	⑨ Pump Displacement 0,15 52,1	⑫ End Job 0,8 46,6

# HALLIBURTON

## Service Supervisor Reports

---

### Job Log

Date/Time	Chart #	Activity Code	Pump Rate	Cum Vol	Pump		Pressure (psig)		Comments
09/13/2013 16:57		Start Job							PRELOADED PLUG IN CEMENT HEAD WITNESSED BY COMPANY REP
09/13/2013 17:00		Test Lines							PRESSURE TESTED LINES AND PUMPS FOUND NO LEAKS AND PRESSURE HELD GOOD
09/13/2013 17:02		Pump Spacer 1	2.00	10.0					PUMP FRESH WATER FROM FRAC TANK
09/13/2013 17:10		Pump Spacer 2	2.00	12.0					MIXED MUD FLUSH WITH FRESH WATER
09/13/2013 17:16		Pump Spacer 1	3.00	10.0					PUMP FRESH WATER FROM FRAC TANK
09/13/2013 17:20		Pump Cement	5.00	395 sk					MIXED 14.2PPG SWIFTCHEM WITH FRESH WATER
09/13/2013 17:52		Shutdown							SHUT TO RELEASE PLUG
09/13/2013 17:53		Drop Top Plug							GOOD RELEASE
09/13/2013 17:53		Pump Displacement	5.00						PUMPED FRESH WATER TO DISPLACE
09/13/2013 18:21		Bump Plug							BUMP PLUG 500 OVER FINAL PRESSURE
09/13/2013 18:23		Check Floats							RELEASE PRESSURE BACK TO PUMP TRUCK FLOAT HELD GOOD
09/13/2013 18:24		End Job							

# HALLIBURTON

## The Road to Excellence Starts with Safety

<b>Sold To #:</b> 300466	<b>Ship To #:</b> 3100388	<b>Quote #:</b>	<b>Sales Order #:</b> 900735739
<b>Customer:</b> ANADARKO PETROLEUM CORP - EBUS		<b>Customer Rep:</b> PORTER, BOB	
<b>Well Name:</b> D&C Farms		<b>Well #:</b> 14N-33HZ	<b>API/UWI #:</b> 05-123-37894
<b>Field:</b> WATTENBURG	<b>City (SAP):</b> DACONO	<b>County/Parish:</b> Weld	<b>State:</b> Colorado
<b>Job Purpose:</b> Cement Surface Casing			
<b>Well Type:</b> Development Well		<b>Job Type:</b> Cement Surface Casing	
<b>Sales Person:</b> PLIENESS, RYAN		<b>Srv Supervisor:</b> OTERI, VAUGHN	<b>MBU ID Emp #:</b> 443828

### Job Personnel

HES Emp Name	Exp Hrs	Emp #	HES Emp Name	Exp Hrs	Emp #	HES Emp Name	Exp Hrs	Emp #
BARNES, BRIAN L	0.0	485204	DEY, JERRY A	0.0	505015	NIELSON, BRANDON K	0.0	479703
OSBORNE, DANIEL Ryan	0.0	551419	OTERI, VAUGHN Steeves	0.0	443828			

### Equipment

HES Unit #	Distance-1 way	HES Unit #	Distance-1 way	HES Unit #	Distance-1 way	HES Unit #	Distance-1 way
10829457	10 mile	11764052	10 mile	11764737	10 mile	11812069C	10 mile
12010172	10 mile						

### Job Hours

Date	On Location Hours	Operating Hours	Date	On Location Hours	Operating Hours	Date	On Location Hours	Operating Hours
<b>TOTAL</b>			<i>Total is the sum of each column separately</i>					

### Job

### Job Times

Formation Name							Date	Time	Time Zone
Formation Depth (MD)	Top			Bottom		Called Out	13 - Sep - 2013	11:00	MST
Form Type			BHST			On Location	13 - Sep - 2013	14:30	MST
Job depth MD	1051. ft		Job Depth TVD	1051. ft		Job Started	13 - Sep - 2013	17:00	MST
Water Depth			Wk Ht Above Floor	4. ft		Job Completed	13 - Sep - 2013	18:30	MST
Perforation Depth (MD)	From			To		Departed Loc	13 - Sep - 2013	19:30	MST

### Well Data

Description	New / Used	Max pressure psig	Size in	ID in	Weight lbm/ft	Thread	Grade	Top MD ft	Bottom MD ft	Top TVD ft	Bottom TVD ft
13 1/2" Open Hole Section				13.5				.	1051.		
9 5/8" Surface Casing	Unknown		9.625	8.921	36.		J-55	.	1051.		

### Tools and Accessories

Type	Size	Qty	Make	Depth	Type	Size	Qty	Make	Depth	Type	Size	Qty	Make
Guide Shoe					Packer					Top Plug			
Float Shoe					Bridge Plug					Bottom Plug			
Float Collar					Retainer					SSR plug set			
Insert Float										Plug Container			
Stage Tool										Centralizers			

### Miscellaneous Materials

Gelling Agt		Conc		Surfactant		Conc		Acid Type		Qty		Conc	%
Treatment Fld		Conc		Inhibitor		Conc		Sand Type		Size		Qty	

### Fluid Data

# HALLIBURTON

Stage/Plug #: 1									
Fluid #	Stage Type	Fluid Name	Qty	Qty uom	Mixing Density lbm/gal	Yield ft <sup>3</sup> /sk	Mix Fluid Gal/sk	Rate bbl/min	Total Mix Fluid Gal/sk
1	Fresh Water Spacer		10	bbl	8.33	.0	.0	.0	
2	Mud Flush		12	bbl	8.4	.0	.0	.0	
3.33 lbm/bbl		MUD FLUSH III, 40 LB SACK (101633304)							
42 gal/bbl		MUD FLUSH III - SBM (528788)							
3	SwiftCem B2	SWIFTCEM (TM) SYSTEM (452990)		sacks	14.2	1.53	7.63		7.63
7.63 Gal		FRESH WATER							
Calculated Values		Pressures		Volumes					
Displacement		Shut In: Instant		Lost Returns		Cement Slurry		Pad	
Top Of Cement		5 Min		Cement Returns		Actual Displacement		Treatment	
Frac Gradient		15 Min		Spacers		Load and Breakdown		Total Job	
Rates									
Circulating		Mixing		Displacement		Avg. Job			
Cement Left In Pipe	Amount	42 ft	Reason	Shoe Joint					
Frac Ring # 1 @	ID	Frac ring # 2 @	ID	Frac Ring # 3 @	ID	Frac Ring # 4 @	ID		
The Information Stated Herein Is Correct				Customer Representative Signature					