

HALLIBURTON

WPX ENERGY ROCKY MOUNTAIN LLC-EBUS

SG 331-22
GARND VAILLEY
Garfield County , Colorado

Cement Surface Casing

17-Aug-2013

Post Job Report

The Road to Excellence Starts with Safety

Sold To #: 300721	Ship To #: 3093396	Quote #:	Sales Order #: 900671913
Customer: WPX ENERGY ROCKY MOUNTAIN LLC-EBUS		Customer Rep: BRUNK, MIKE	
Well Name: SG	Well #: 331-22	API/UWI #:	
Field:	City (SAP): PARACHUTE	County/Parish: Garfield	State: Colorado
Contractor: CYCLONE 17	Rig/Platform Name/Num: 17		
Job Purpose: Cement Surface Casing			
Well Type: Development Well		Job Type: Cement Surface Casing	
Sales Person: MAYO, MARK		Srvc Supervisor: CASTILLO, FRANCISCO	MBU ID Emp #: 513620

Job Personnel

HES Emp Name	Exp Hrs	Emp #	HES Emp Name	Exp Hrs	Emp #	HES Emp Name	Exp Hrs	Emp #
EICKNOFF, ROBERT	6	456683	CASTILLO, FRANCISCO P	6	513620	LAULAINEN, ROGER Edward	6	524413
MCINTOSH, ROBERT James	6	547652	ROMKEE, DALE Alan	6	488215			

Equipment

HES Unit #	Distance-1 way	HES Unit #	Distance-1 way	HES Unit #	Distance-1 way	HES Unit #	Distance-1 way
10565341	60 mile	10867423	60 mile	10872429	60 mile	10951246	60 mile
10995025	60 mile	11562538	60 mile	11808847	60 mile		

Job Hours

Date	On Location Hours	Operating Hours	Date	On Location Hours	Operating Hours	Date	On Location Hours	Operating Hours
8/17/13	6	1						

TOTAL Total is the sum of each column separately

Job

Job Times

Formation Name	Formation Depth (MD)	Top	Bottom	1510	Called Out	Date	Time	Time Zone
						17 - Aug - 2013	07:00	MST
Form Type			BHST		On Location	17 - Aug - 2013	10:00	MST
Job depth MD	1510. ft		Job Depth TVD	1510. ft	Job Started	17 - Aug - 2013	13:04	MST
Water Depth			Wk Ht Above Floor	3. ft	Job Completed	17 - Aug - 2013	14:05	MST
Perforation Depth (MD)	From		To		Departed Loc	17 - Aug - 2013	16:00	MST

Well Data

Description	New / Used	Max pressure psig	Size in	ID in	Weight lbm/ft	Thread	Grade	Top MD ft	Bottom MD ft	Top TVD ft	Bottom TVD ft

Tools and Accessories

Type	Size	Qty	Make	Depth	Type	Size	Qty	Make	Depth	Type	Size	Qty	Make
Guide Shoe	9.625	1	WTF	1499	Packer					Top Plug	9.625	1	HES
Float Shoe					Bridge Plug					Bottom Plug			
Float Collar	9.625	1	WTF	1458	Retainer					SSR plug set			
Insert Float										Plug Container	9.625	1	HES
Stage Tool										Centralizers	9.625		WTF

Miscellaneous Materials

Gelling Agt	Conc	Surfactant	Conc	Acid Type	Qty	Conc	%
Treatment Fld	Conc	Inhibitor	Conc	Sand Type	Size	Qty	

Fluid Data

Stage/Plug #: 1

Fluid #	Stage Type	Fluid Name	Qty	Qty uom	Mixing Density lbm/gal	Yield ft ³ /sk	Mix Fluid Gal/sk	Rate bbl/min	Total Mix Fluid Gal/sk

Stage/Plug #: 1

Fluid #	Stage Type	Fluid Name	Qty	Qty uom	Mixing Density lbm/gal	Yield ft ³ /sk	Mix Fluid Gal/sk	Rate bbl/min	Total Mix Fluid Gal/sk

Stage/Plug #: 1									
1	Fresh Water Spacer		20.00	bbl	.	.0	.0	6	
2	VariCem GJ1 Lead Cement	VARICEM (TM) CEMENT (452009)	205.0	sacks	12.3	2.38	13.75	8	13.75
	13.75 Gal	FRESH WATER							
3	VariCem GJ1 Tail Cement	VERSACEM (TM) SYSTEM (452010)	160.0	sacks	12.8	2.11	11.75	8	11.75
	11.75 Gal	FRESH WATER							
4	Fresh Water Displacement		115.00	bbl	.	.0	.0	10	
Calculated Values		Pressures		Volumes					
Displacement	115	Shut In: Instant		Lost Returns	NONE	Cement Slurry	147	Pad	
Top Of Cement	SURFACE	5 Min		Cement Returns	40	Actual Displacement	115	Treatment	
Frac Gradient		15 Min		Spacers	20	Load and Breakdown		Total Job	282
Rates									
Circulating	RIG	Mixing	8	Displacement	10	Avg. Job	7		
Cement Left In Pipe	Amount	41 ft	Reason	Shoe Joint					
Frac Ring # 1 @	ID	Frac ring # 2 @	ID	Frac Ring # 3 @	ID	Frac Ring # 4 @	ID		
The Information Stated Herein Is Correct				Customer Representative Signature					

The Road to Excellence Starts with Safety

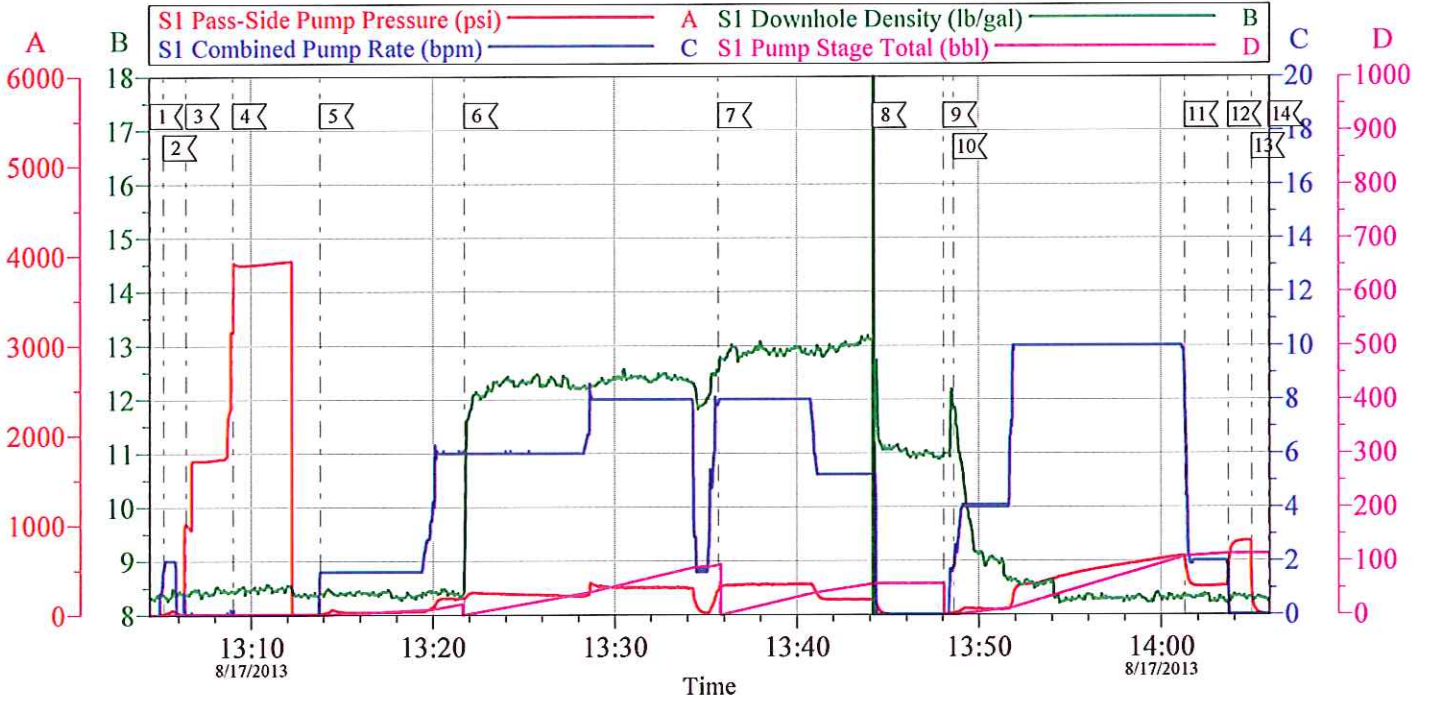
Sold To #: 300721	Ship To #: 3093396	Quote #:	Sales Order #: 900671913
Customer: WPX ENERGY ROCKY MOUNTAIN LLC-EBUS		Customer Rep: BRUNK, MIKE	
Well Name: SG	Well #: 331-22	API/UWI #:	
Field:	City (SAP): PARACHUTE	County/Parish: Garfield	State: Colorado
Legal Description:			
Lat:		Long:	
Contractor: CYCLONE 17	Rig/Platform Name/Num: 17		
Job Purpose: Cement Surface Casing			Ticket Amount:
Well Type: Development Well		Job Type: Cement Surface Casing	
Sales Person: MAYO, MARK	Srvc Supervisor: CASTILLO, FRANCISCO	MBU ID Emp #: 513620	

Activity Description	Date/Time	Cht #	Rate bbl/min	Volume bbl		Pressure psig		Comments
				Stage	Total	Tubing	Casing	
Pre-Convoy Safety Meeting	08/17/2013 08:50							ALL HES PERSONEL
Crew Leave Yard	08/17/2013 09:00							
Arrive At Loc	08/17/2013 10:00							RIG WAS STILL RUNNING CASING/LANDED CASING 11:50 AM/CIRCULATED WELL FROM NOON TO 13:00 HRS
Assessment Of Location Safety Meeting	08/17/2013 11:50							ALL HES PERSONEL/WHILE GETTING TRUCKS SPOTTED ON LOCATION A RIG HAND DRIVING THE LOADER PUT HIS LOADER IN REVERSE AND BACKED INTO ONE OF HES BULK TRUCKS. LOADER OPERATOR NEVER LOOKED BACK BEFOR PUTTING IT IN GEAR.
Rig-Up Equipment	08/17/2013 12:00							1-ELITE, 2-660 BULK TRUCKS, 2" PUMPING IRON, 9.625" PLUG CONTAINER AND QUICKLATCH
Rig-Up Completed	08/17/2013 12:50							
Pre-Job Safety Meeting	08/17/2013 12:55							ALL HES PERSONEL AND RIG CREW

Activity Description	Date/Time	Cht #	Rate bbl/min	Volume bbl		Pressure psig		Comments
				Stage	Total	Tubing	Casing	
Start Job	08/17/2013 13:04							
Pump Water	08/17/2013 13:05		2	2			49.0	FILL LINES
Pressure Test	08/17/2013 13:06		0.2	0.2				STALL OUT TEST WITH 1727 PSI
Pressure Test	08/17/2013 13:09		0.2	0.2				PRESSURE TEST LINES WITH 3933 PSI
Pump Spacer	08/17/2013 13:13		6	20			185.0	FIRST 10 BBLS WERE PUMPED AT 2 BPM WITH 35 PSI WERE BATCHING UP CEMENT SLURRY
Pump Lead Cement	08/17/2013 13:21		8	87			295.0	205 SKS, 12.3 PPG, 2.38 FT3/SK, 13.75 GAL/SK, FIRST 40 BBLS WERE PUMPED AT 6 BPM WITH 207 PSI
Pump Tail Cement	08/17/2013 13:35		8	60			340.0	160 SKS, 12.8 PPG, 2.11 FT3/SK, 11.75 GAL/SK
Shutdown	08/17/2013 13:44							
Drop Plug	08/17/2013 13:48							
Pump Displacement	08/17/2013 13:48		10	105			480.0	PUMPED FIRST 10 BBLS AT 4 BPM WITH 58 PSI WHILE OPERATOR WASHED CEMENT HEAD AND TUB.
Slow Rate	08/17/2013 14:01		2	10			360.0	CIRCULATED 40 BBLS/94 SKS TO SURFACE. USED 100 LBS OF SUGAR IN THE CELLAR
Bump Plug	08/17/2013 14:03			115			890.0	ALL HES PERSONEL
Check Floats	08/17/2013 14:04							FLOATS HELD/ 0.75 BBLS FLOW BACK TO DISPLACEMENT TANK
End Job	08/17/2013 14:05							
Post-Job Safety Meeting (Pre Rig-Down)	08/17/2013 14:10							
Call Out	08/17/2013 14:43							ON LOCATION AT 12:00 NOON

Activity Description	Date/Time	Cht #	Rate bbl/min	Volume bbl		Pressure psig		Comments
				Stage	Total	Tubing	Casing	
Rig-Down Completed	08/17/2013 15:30							
Crew Leave Location	08/17/2013 16:00							
Other	08/17/2013 16:01							THANK YOU FOR YOUR BUSINESS FROM JAVIER CASTILLO AND CREW
Depart Location Safety Meeting	08/17/2013 16:40							

WPX SG 331-22
SURFACE

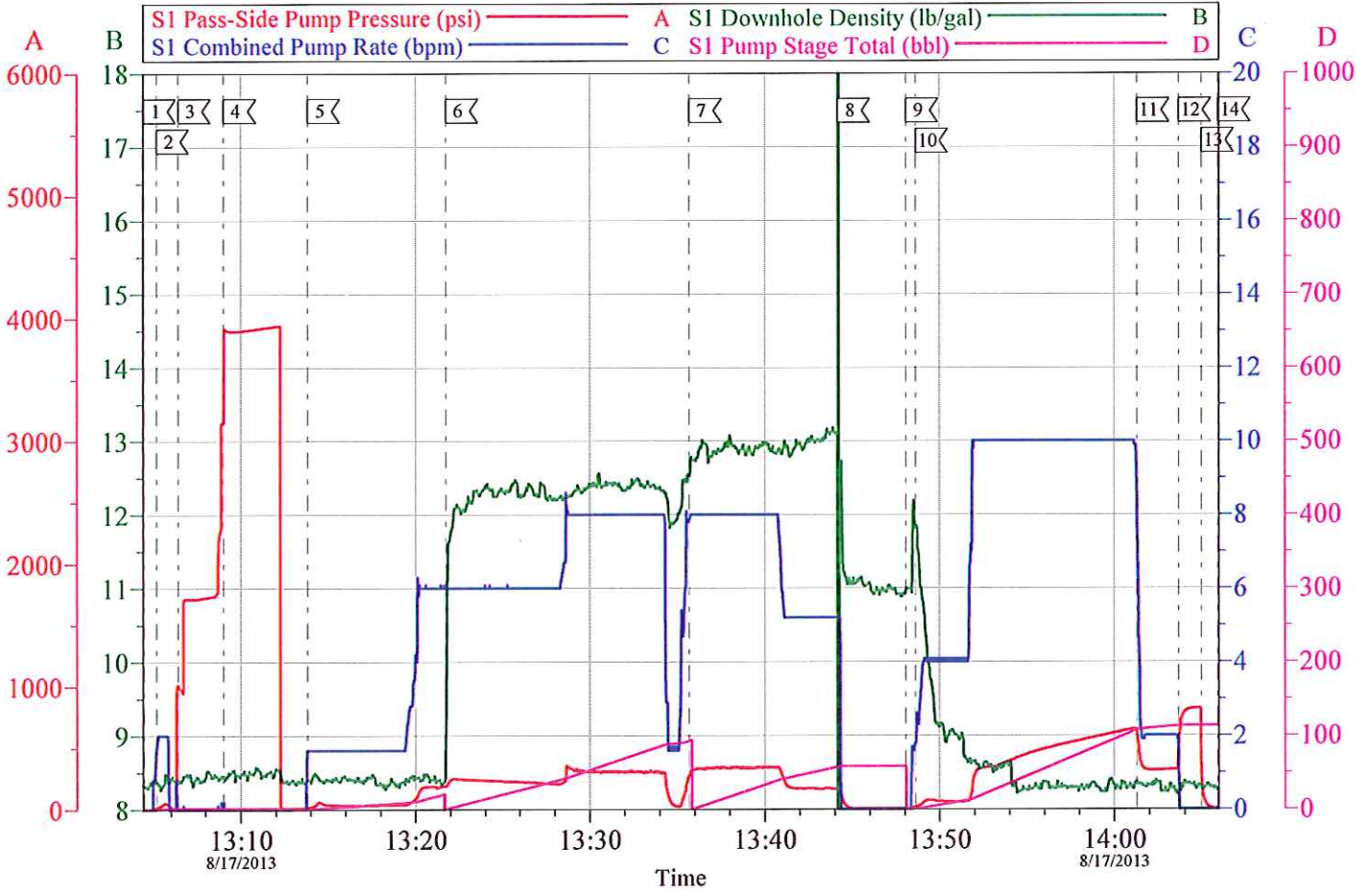


Local Event Log								
1	START JOB	13:04:27	2	FILL LINES	13:05:11	3	STALL OUT	13:06:26
4	TEST LINES	13:09:02	5	WATER SPACER	13:13:50	6	LEAD SLURRY	13:21:45
7	TAIL SLURRY	13:35:42	8	SHUTDOWN	13:44:10	9	DROP PLUG	13:48:04
10	DISPLACEMENT	13:48:38	11	SLOW RATE	14:01:18	12	BUMP PLUG	14:03:40
13	CHECK FLOATS	14:04:58	14	END JOB	14:05:56			

Customer: WPX	Job Date: 17-Aug-2013	Sales Order #: 900671913
Well Description: SG 331-22	Job Type: SURFACE	ADC Used: YES
Company Rep: MIKE BRUNK	Cement Supervisor: JAVIER CASTILLO	ELITE#7 ROB EICKNOFF

OptiCem v6.4.10
17-Aug-13 14:34

WPX SG 331-22
SURFACE



Customer: WPX	Job Date: 17-Aug-2013	Sales Order #: 900671913
Well Description: SG 331-22	Job Type: SURFACE	ADC Used: YES
Company Rep: MIKE BRUNK	Cement Supervisor: JAVIER CASTILLO	ELITE#7 ROB EICKNOFF

OptiCem v6.4.10
17-Aug-13 14:34

HALLIBURTON

Water Analysis Report

Company: WPX
Submitted by: JAVIER CASTILLO
Attention: J.Trout
Lease SG
Well # 331-22

Date: 8/17/2013
Date Rec.: 8/17/2013
S.O.# 900671913
Job Type: SURFACE

Specific Gravity	<i>MAX</i>	1
pH	<i>8</i>	7
Potassium (K)	<i>5000</i>	200 Mg / L
Calcium (Ca)	<i>500</i>	120 Mg / L
Iron (FE2)	<i>300</i>	0 Mg / L
Chlorides (Cl)	<i>3000</i>	0 Mg / L
Sulfates (SO ₄)	<i>1500</i>	200 Mg / L
Chlorine (Cl ₂)		0 Mg / L
Temp	<i>40-80</i>	75 Deg
Total Dissolved Solids		200 Mg / L

Respectfully: JAVIER CASTILLO

Title: CEMENTING SUPERVISOR

Location: Grand Junction, CO

NOTICE:

This report is limited to the described sample tested. Any person using or relying on this report agrees that Halliburton shall not be liable for any loss or damage whether due to act or omission resulting from such report or it

Sales Order #: 900671913	Line Item: 10	Survey Conducted Date: 8/17/2013
Customer: WPX ENERGY ROCKY MOUNTAIN LLC-EBUS		Job Type (BOM): CMT SURFACE CASING BOM
Customer Representative: MIKE BRUNK		API / UWI: (leave blank if unknown) AFEYCTC1VIKNYGI0AAA
Well Name: SG		Well Number: 331-22
Well Type: Development Well	Well Country: United States of America	
H2S Present:	Well State: Colorado	Well County: Garfield

Dear Customer,

We hope that you were satisfied with the service quality of this job performed by Halliburton. It is the aim of our management and service personnel to deliver equipment and service of a standard unmatched in the service sector of the energy industry.

Please take the time to let us know if our performance met with your satisfaction. Please be as critical as possible to ensure we constantly improve our service. Your comments are of great value to us and are intended for the exclusive use of Halliburton.

CUSTOMER SATISFACTION SURVEY

CATEGORY	CUSTOMER SATISFACTION RESPONSE	
Survey Conducted Date	The date the survey was conducted	8/17/2013
Survey Interviewer	The survey interviewer is the person who initiated the survey.	FRANCISCO CASTILLO (HB85312)
Customer Participation	Did the customer participate in this survey? (Y/N)	Yes
Customer Representative	Enter the Customer representative name	MIKE BRUNK
HSE	Was our HSE performance satisfactory? Circle Y or N	Yes
Equipment	Were you satisfied with our Equipment? Circle Y or N	Yes
Personnel	Were you satisfied with our people? Circle Y or N	Yes
Customer Comment	Customer's Comment	

CUSTOMER SIGNATURE

Sales Order #: 900671913	Line Item: 10	Survey Conducted Date: 8/17/2013
Customer: WPX ENERGY ROCKY MOUNTAIN LLC-EBUS		Job Type (BOM): CMT SURFACE CASING BOM
Customer Representative: MIKE BRUNK		API / UWI: (leave blank if unknown) AFEYCTC1VIKNGYI0AAA
Well Name: SG		Well Number: 331-22
Well Type: Development Well	Well Country: United States of America	
H2S Present:	Well State: Colorado	Well County: Garfield

KEY PERFORMANCE INDICATORS

General	
Survey Conducted Date	8/17/2013
The date the survey was conducted	

Cementing KPI Survey	
Type of Job	0
Select the type of job. (Cementing or Non-Cementing)	
Select the Maximum Deviation range for this Job	Vertical
What is the highest deviation for the job you just completed? This may not be the maximum well deviation.	
Total Operating Time (hours)	6
Total Operating Hours Including Rig-up, Pumping, Rig-down. Enter in decimal format.	
HSE Incident, Accident, Injury	No
HSE Incident, Accident, Injury. This should be recordable incidents only.	
Was the job purpose achieved?	Yes
Was the job delivered correctly as per customer agreed design?	
Operating Hours (Pumping Hours)	1
Total number of hours pumping fluid on this job. Enter in decimal format.	
Customer Non-Productive Rig Time (hrs)	0
Lost time due to Halliburton in the start, execution, or completion of an ordered service or product, or delays in a follow-on service. Enter in decimal format. 0 if none.	
Type of Rig Classification Job Was Performed	Drilling Rig (Portable)
Type Of Rig (classification) Job Was Performed On	
Number Of JSAs Performed	5
Number Of Jsas Performed	
Number of Unplanned Shutdowns	0
Unplanned shutdown is when injection stops for any period of time.	
Was this a Primary Cement Job (Yes / No)	Yes

Sales Order #: 900671913	Line Item: 10	Survey Conducted Date: 8/17/2013
Customer: WPX ENERGY ROCKY MOUNTAIN LLC-EBUS		Job Type (BOM): CMT SURFACE CASING BOM
Customer Representative: MIKE BRUNK		API / UWI: (leave blank if unknown) AFEYCTC1VIKNYGI0AAA
Well Name: SG		Well Number: 331-22
Well Type: Development Well	Well Country: United States of America	
H2S Present:	Well State: Colorado	Well County: Garfield

Primary Cement Job= Casing job, Liner job, or Tie-back job.	
Did We Run Wiper Plugs?	Top
Did We Run Top And Bottom Casing Wiper Plugs?	
Mixing Density of Job Stayed in Designed Density Range (0-100%)	95
Density Range defined as +/- .20 ppg. Calculation: Total BBLs cement mixed at designed density divided by total BBLs of cement multiplied by 100	
Was Automated Density Control Used?	Yes
Was Automated Density Control (ADC) Used ?	
Pump Rate (percent) of Job Stayed At Designed Pump Rate	95
Pump Rate range defined as +/- 1bbl/min. Calculation: Total BBLs of fluid pumped at the designed rate divided by Total BBLs of fluid pumped, multiplied by 100	
Nbr of Remedial Sqz Jobs Rqd - Competition	0
Number Of Remedial Squeeze Jobs Required After Primary Job Performed By Competition	
Nbr of Remedial Plug Jobs Rqd - HES	0
Number Of Remedial Plug Jobs Needed After Primary Plug Pumped By HES	
Nbr of Remedial Sqz Jobs Rqd - HES	0
Number Of Remedial Squeeze Jobs Required After Primary Job Performed By HES	