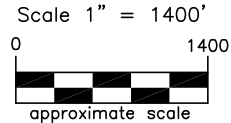


JR Land Surveying, LLC

8114 Northstar Drive
Windsor, Colorado 80528
P. 970-576-4641

WELL LOCATION CERTIFICATE

THIS MAP DOES NOT REPRESENT A BOUNDARY SURVEY



LEGEND

- found survey monument
- (C) — calculated dimension

(a) Existing Well Data:

Jillson 'A' #3
Latitude: N 40.11867°
Longitude: W 105.00115°
FSL: 651'
FEL: 661'
ELEV: 4928'
PDOP: 1.8

(b) Existing Well Data:

Edith Ann 44-21
Latitude: N 40.11838°
Longitude: W 105.00090°
FSL: 544'
FEL: 591'
ELEV: 4930'
PDOP: 1.8

Nearest:

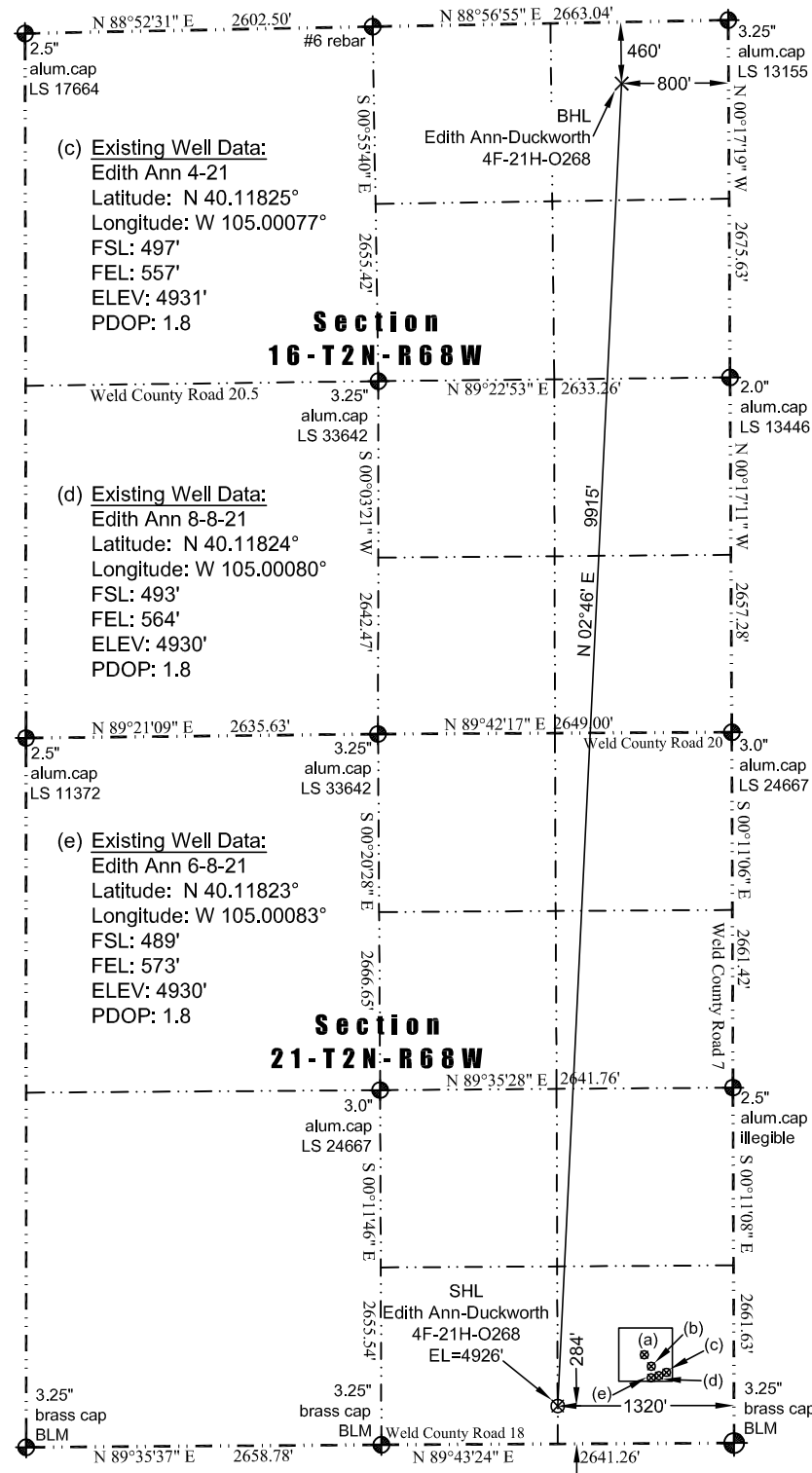
Building: 457' southeast
Building Unit: 672' southeast
Above Ground Utility: 306' southwest
Public Road: 270' south
Railroad: +5,280'
Property Line: 284' south
Well Window: SHL is 494' outside
Existing Well:
Jillson 'A' #3; 754' northeast
High Occupancy Building Unit: +5,280'

Proposed Surface Hole Data:

Latitude: N 40.11767° (BHL: 40.14485°)
Longitude: W 105.00350° (BHL: 105.00159°)
PDOP: 2.3

I hereby certify that this Well Location Certificate was prepared by me or under my direct supervision on 12/2/2013 for and on behalf of EnCana Oil & Gas (USA) Inc. That it is not a Land Survey Plat or an Improvement Survey Plat and that it is not to be relied upon for establishment of fences, buildings, or other future improvement lines.

John Robert McGehee LS#38219
Well: Edith Ann-Duckworth 4F-21H-O268 WLC



Notes:

- Bearings and distances based on NAD 83 Colorado North State Plane Coordinate, using RTK GPS observations taken 12/2/13 by operator John Rice
- Conversion factor to ground (1.000285153).
- Elevations based on NAVD 88 GPS heights and Geoid 2003 corrections.
- See Location Drawing for visible improvements within 500 feet of Pad Site.
- The surface use is a cultivated field.

NOTICE: According to Colorado law you must commence any legal action based upon any defect in this W.L.C. within three years after you first discover such defect. In no event may any action based upon any defect in this W.L.C. be commenced more than ten years from this said date of the certification shown hereon.