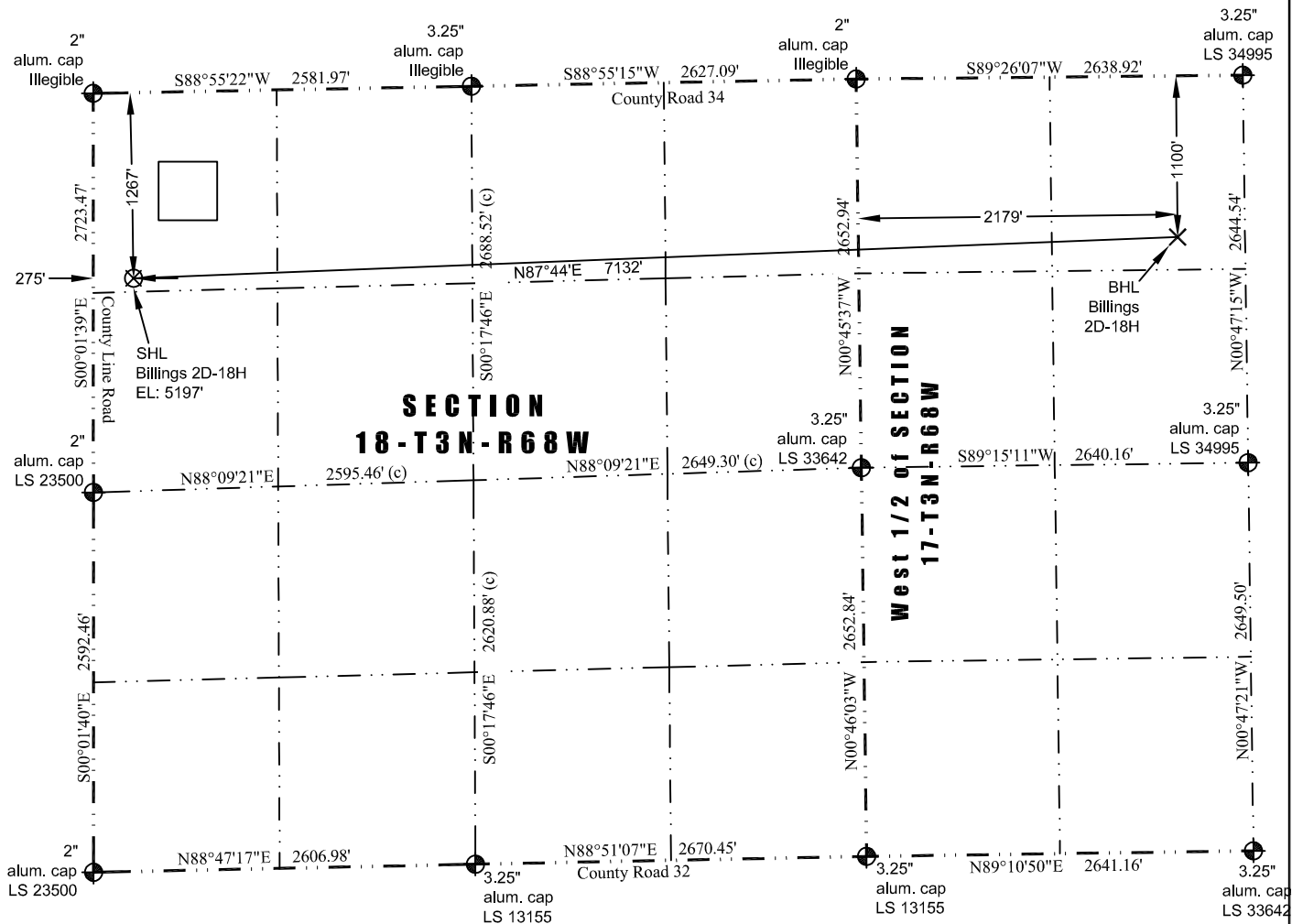


# JR Land Surveying, LLC

8114 Northstar Drive  
Windsor, Colorado 80528  
P. 970-576-4641

## WELL LOCATION CERTIFICATE

THIS MAP DOES NOT REPRESENT A BOUNDARY SURVEY



In accordance with a request from Jay Knutson of EnCana Oil & Gas (USA) Inc., JR Land Surveying, LLC has determined the location of the **Billings 2D-18H** well site to be SHL: 1267' FNL and 275' FWL, (BHL: 1100' FNL and 2179' FWL) as measured at ninety (90) degrees from the section lines of Section 18 and Section 17, Township 3 North, Range 68 West, 6th Principal Meridian, County of Weld, CO.

### Proposed Surface Hole Data:

Latitude: N 40.22931° (BHL: 40.22998°)  
Longitude: W 105.05413° (BHL: 105.02860°)  
PDOP: 2.0

### Nearest:

Building Unit: 1,434' northeast  
Public Road: 270' west  
Property Line: 275' west  
Existing Well: Pedicord #1, 3,075' northwest

Above Ground Utility: 1,158' northwest  
Railroad: +5,280'  
Well Window: SHL is 423' outside  
High Occupancy Building Unit: +5,280'

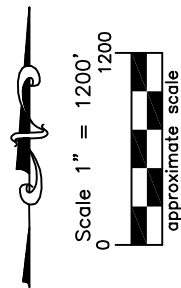
**LEGEND**  
— found survey monument  
(c) — calculated dimension

I hereby certify that this Well Location Certificate was prepared by me or under my direct supervision on 12/2/2013 for and on behalf of EnCana Oil & Gas (USA) Inc. That it is not a Land Survey Plat or an Improvement Survey Plat and that it is not to be relied upon for establishment of fences, buildings, or other future improvement lines.

### Notes:

- 1) Bearings and distances based on NAD 83 Colorado North State Plane Coordinates using RTK GPS observations taken 12/2/13 by operator John Rice.
- 2) Conversion factor to ground (1.000286833).
- 3) Elevations based on NAVD 88 GPS heights and Geoid 2003 corrections.
- 4) See Location Drawing for visible improvements within 400' of pad site.
- 5) The surface use is a cultivated field.

**NOTICE:** According to Colorado law you MUST commence any legal action based upon any defect in this W.L.C. within three years after you first discover such defect. In no event may any action based upon any defect in this W.L.C. be commenced more than ten years from this said date of the certification shown hereon.



John Robert McGehee LS#38219  
Well: Billings 2D-18H WLC

