

T10N, R57W, 6th P.M.

WHITING OIL & GAS CORP.

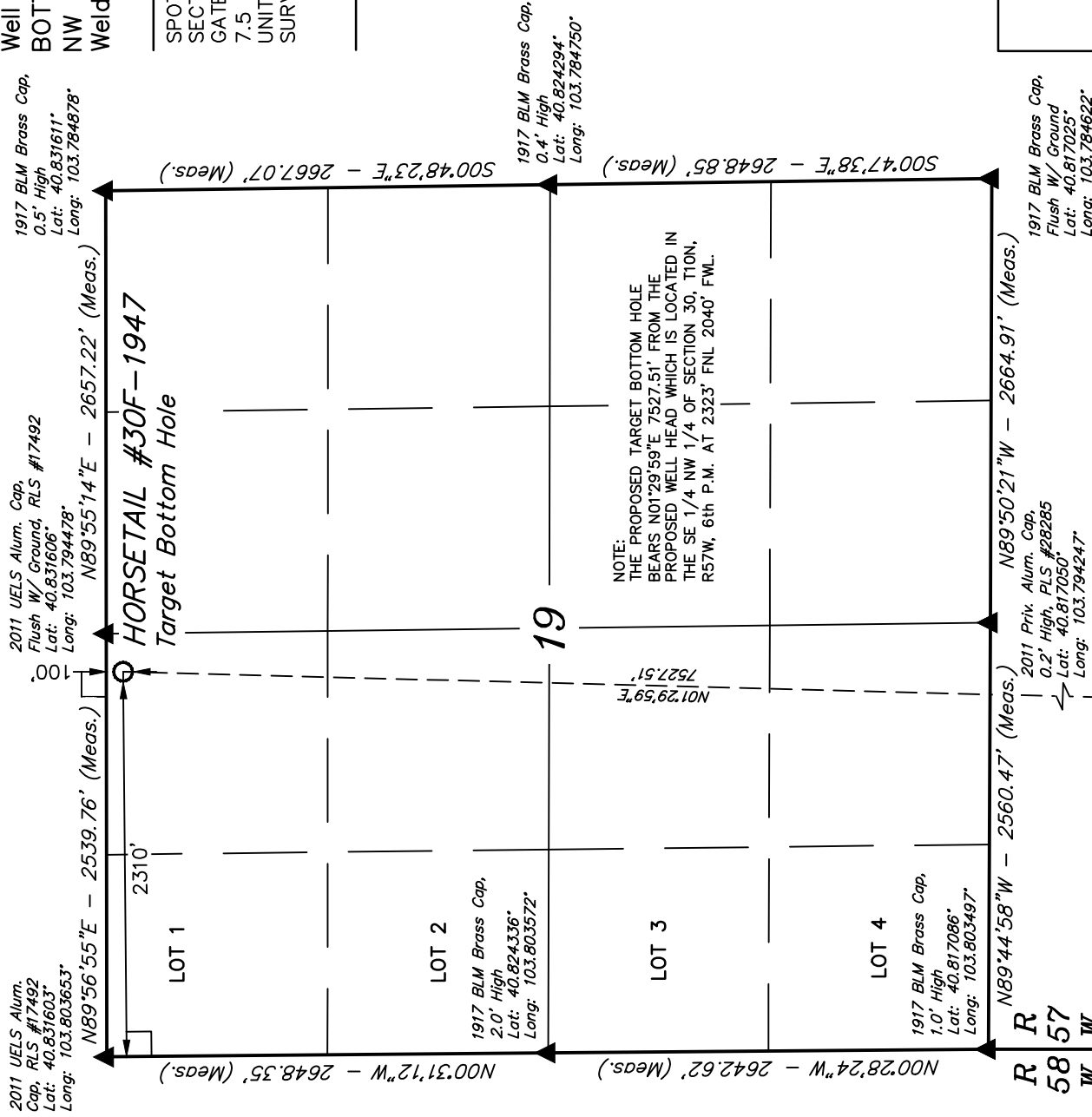
Well location, HORSETAIL #30F-1947 (TARGET BOTTOM HOLE), located as shown in the NE 1/4 NW 1/4 of Section 19, T10N, R57W, 6th P.M., Weld County, Colorado.

BASIS OF ELEVATION

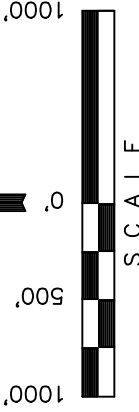
SPOT ELEVATION LOCATED AT THE NORTHEAST CORNER OF SECTION 15, T9N, R58W, 6th P.M. TAKEN FROM THE GATEHOOK SPRING, QUADRANGLE, COLORADO, WELD COUNTY, 7.5 MINUTE QUAD (TOPOGRAPHIC MAP) PUBLISHED BY THE UNITED STATES DEPARTMENT OF THE INTERIOR, GEOLOGICAL SURVEY. SAID ELEVATION IS MARKED AS BEING 4679 FEET.

BASIS OF BEARINGS

BASIS OF BEARINGS IS A G.P.S. OBSERVATION.



NOTE:
THE PROPOSED TARGET BOTTOM HOLE BEARS N01°29'59"E 7527.51' FROM THE PROPOSED WELL HEAD WHICH IS LOCATED IN THE SE 1/4 NW 1/4 OF SECTION 30, T10N, R57W, 6th P.M. AT 2323' FNL 2040' FWL.



CERTIFICATE OF REGISTRATION
THIS IS TO CERTIFY THAT THE ABOVE MAP WAS PREPARED FROM FIELD NOTES OF ACTUAL SURVEY MADE BY ME OR UNDER MY SUPERVISION AND THAT THE SAME ARE TRUE AND CORRECT TO THE BEST OF MY KNOWLEDGE AND BELIEF.
JULY 19 2025
REGISTERED LAND SURVEYOR
REGISTRATION NO. 28285
STATE OF COLORADO
SPECIAL LAND SURVEY 10-13

UTAH ENGINEERING & LAND SURVEYING	
85 SOUTH 200 EAST - VERNAL, UTAH 84078	
(435) 789-1017	
SCALE 1" = 1000'	DATE SURVEYED: 10-14-13
PARTY D.L.S. D.M.S. J.S.	DATE DRAWN: 10-25-13
WEATHER COLD	REFERENCES G.L.O. PLAT
FILE WHITING OIL & GAS CORP.	

Surface Location

NAD 83 (TARGET BOTTOM HOLE)	
LATITUDE = 40°49'52.79" (40.831331)	
LONGITUDE = 103°47'43.10" (103.795306)	
NAD 27 (TARGET BOTTOM HOLE)	
LATITUDE = 40°49'52.85" (40.831347)	
LONGITUDE = 103°47'41.29" (103.794803)	

- LEGEND:
- = 90° SYMBOL
 - = PROPOSED WELL HEAD.
 - ▲ = SECTION CORNERS LOCATED.