

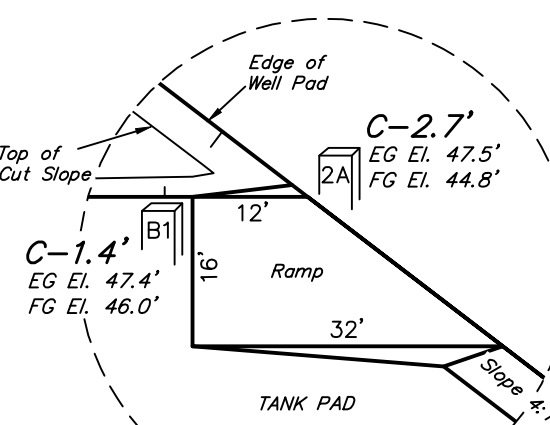
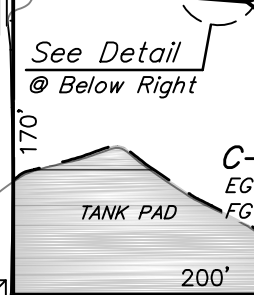
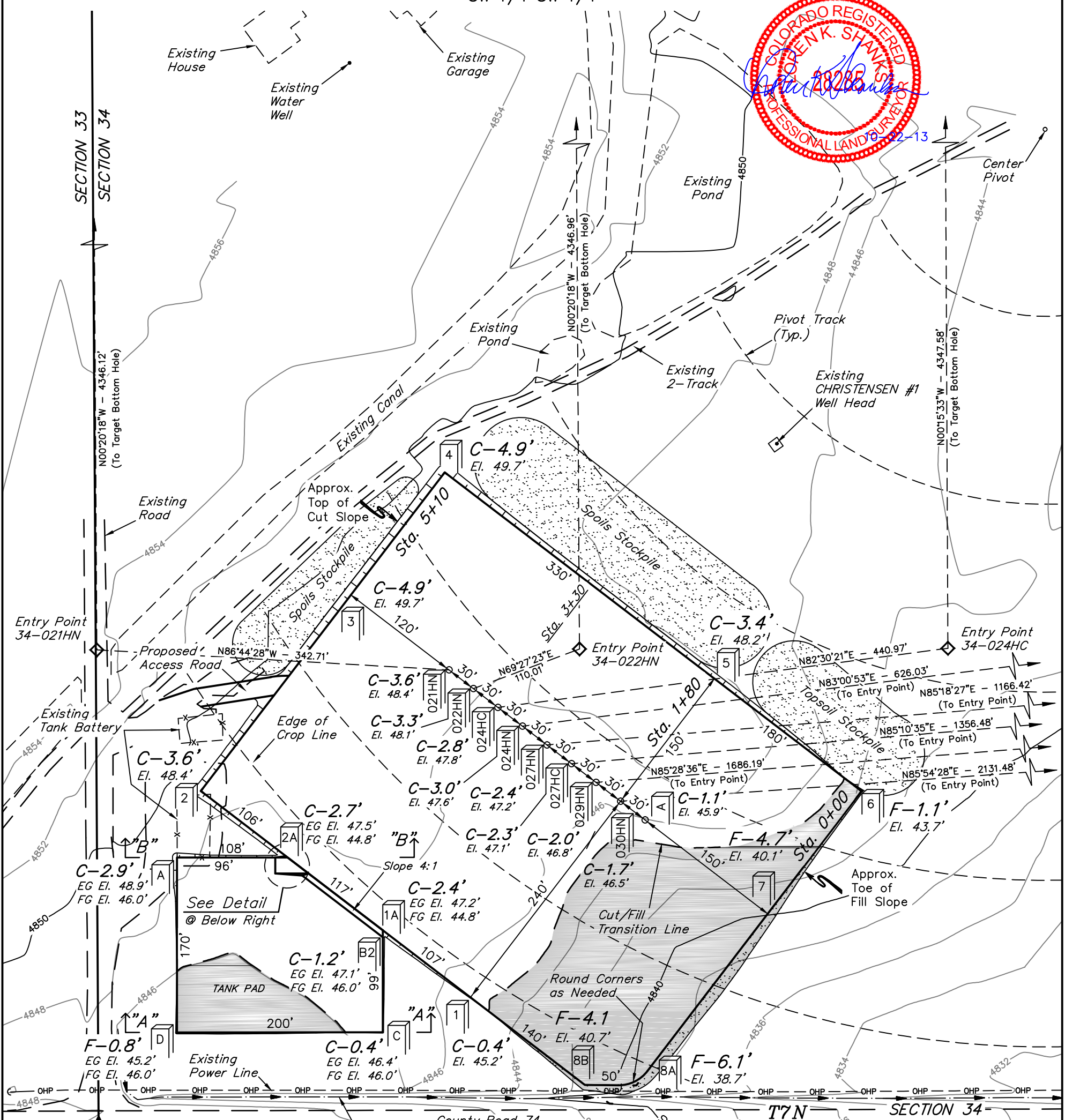
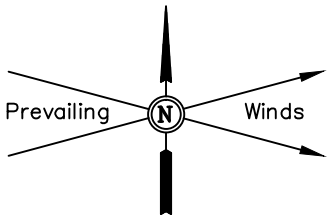
GREAT WESTERN OIL & GAS COMPANY

CONSTRUCTION LAYOUT FOR

BRUEGMAN SOUTH EG 34-A, 34-030HN, 34-029HN, 34-027HC,
34-027HN, 34-024HN, 34-024HC, 34-022HN & 34-021HN
SECTION 34, T7N, R64W, 6th P.M.
SW 1/4 SW 1/4

FIGURE #1

SCALE: 1" = 100'
DATE: 09-13-13
DRAWN BY: J.W.
REVISED: 09-23-13
REVISED: 10-02-13
REVISED: 10-22-13



1994 Alum. Cap. #12374, 0.6' Below Ground

Elev. Ungraded Ground At 34-030HN Loc. Stake = 4846.5'
FINISHED GRADE ELEV. AT 34-030HN LOC. STAKE = 4844.8'

UINTAH ENGINEERING & LAND SURVEYING
85 So. 200 East * Vernal, Utah 84078 * (435) 789-1017

GREAT WESTERN OIL & GAS COMPANY

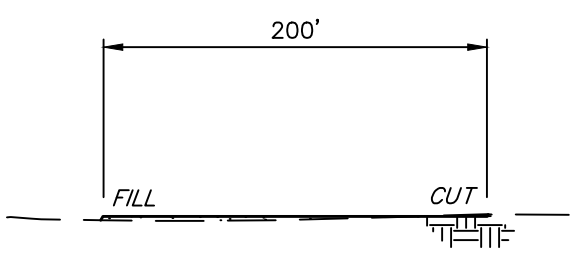
FIGURE #2

CONSTRUCTION LAYOUT CROSS SECTIONS FOR

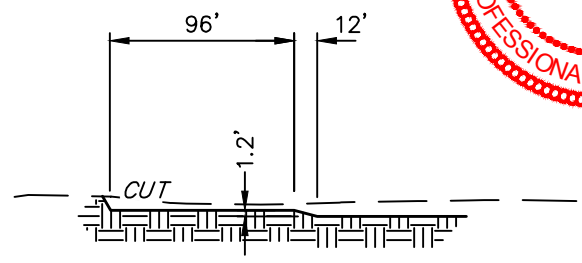
BRUEGMAN SOUTH EG 34-A, 34-030HN, 34-029HN, 34-027HC,
34-027HN, 34-024HN, 34-024HC, 34-022HN & 34-021HN
SECTION 34, T7N, R64W, 6th P.M.
SW 1/4 SW 1/4

1" = 40'
X-Section Scale
1" = 100'

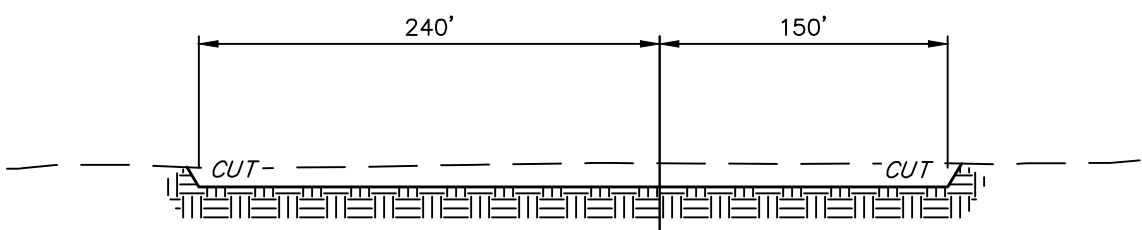
DATE: 09-13-13
DRAWN BY: J.W.
REVISED: 10-02-13
REVISED: 10-22-13



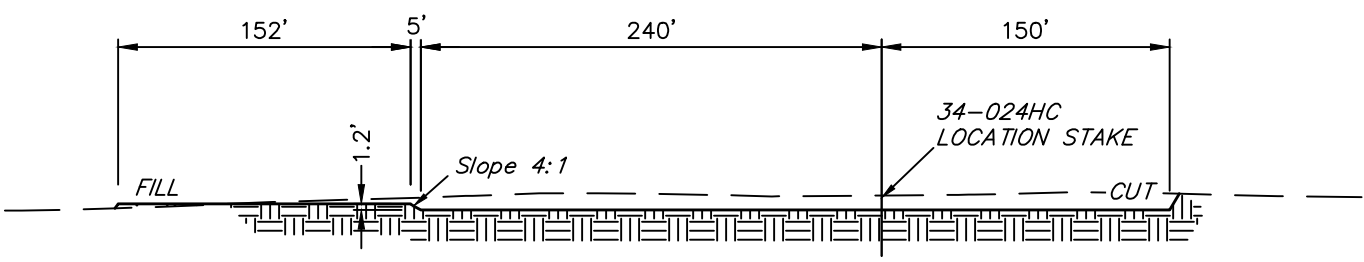
"A" - "A"



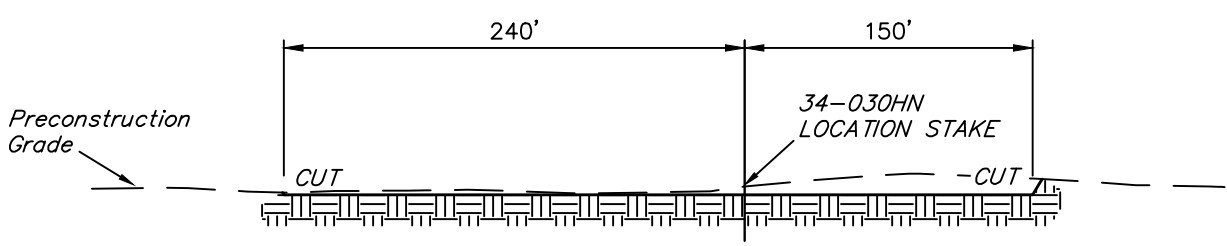
"B" - "B"



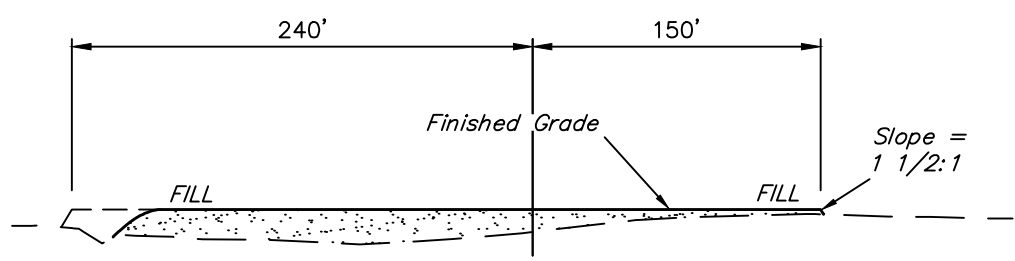
STA. 5+10



STA. 3+30



STA. 1+80



STA. 0+00

NOTE:
Topsoil should not be Stripped Below Finished Grade on Substructure Area.

* NOTE:
FILL QUANTITY INCLUDES 5% FOR COMPACTION

APPROXIMATE YARDAGES

(6") Topsoil Stripping	= 4,430 Cu. Yds.
Remaining Location	= 15,600 Cu. Yds.
TOTAL CUT	= 20,030 CU. YDS.
FILL	= 6,240 CU. YDS.

EXCESS MATERIAL	= 13,790 Cu. Yds.
Topsoil	= 4,430 Cu. Yds.
EXCESS UNBALANCE	= 9,360 Cu. Yds.
(After Interim Rehabilitation)	

<u>APPROXIMATE ACREAGE</u>	
WELL SITE DISTURBANCE	= ± 6.723 ACRES
ACCESS ROAD DISTURBANCE	= ± 0.083 ACRES
TOTAL	= ± 6.806 ACRES

UINTAH ENGINEERING & LAND SURVEYING
85 So. 200 East * Vernal, Utah 84078 * (435) 789-1017