

1994, Alum. Cap,
#12374
0.6' Below Ground,
Lat: 40.537025°
Long: 104.526756

Well location, BRUEGMAN SOUTH EG 34-021HN, located as shown in the SW 1/4 SW 1/4 of Section 34, T7N, R64W, 6th P.M., Weld County, Colorado.

BASIS OF ELEVATION

USGS COOPERATIVE BASE NETWORK CONTROL STATION,
DESIGNATION 'M414'. NGS DATA SHEET LISTS THE
NAVD 88 ELEVATION AS BEING 4600.58 FEET

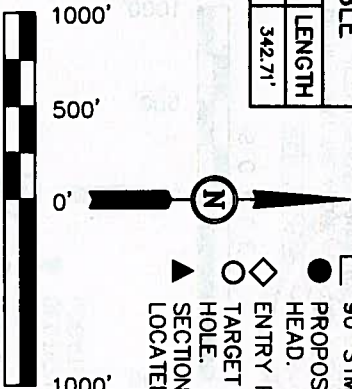
BASIS OF BEARINGS

BASIS OF BEARINGS IS A G.P.S. OBSERVATION

LINE TABLE		
LINE	DIRECTION	LENGTH
L1	N86°44'28"W	342.71'

LEGEND:

- 90° SYMBOL
 PROPOSED WELL HEAD.
 ENTRY POINT
 TARGET BOTTOM HOLE.
 SECTION CORNERS LOCATED.



SCALE

THIS IS TO CERTIFY THAT THE ABOVE SIGNED PERSON HAS BEEN
FILED NOTES OF ACTUAL SURVEYS MADE BY ME OR UNDER MY
SUPERVISION AND THAT THE SAME ARE TRUE AND CORRECT TO THE
BEST OF MY KNOWLEDGE AND BELIEF.

REGISTERED LAND SURVEYOR
REGISTRATION NO. 28285
STATE OF COLORADO
18-05-13

REMSD: 10-22-13
REMSD: 10-03-13

UNTAH ENGINEERING & LAND SURVEYING

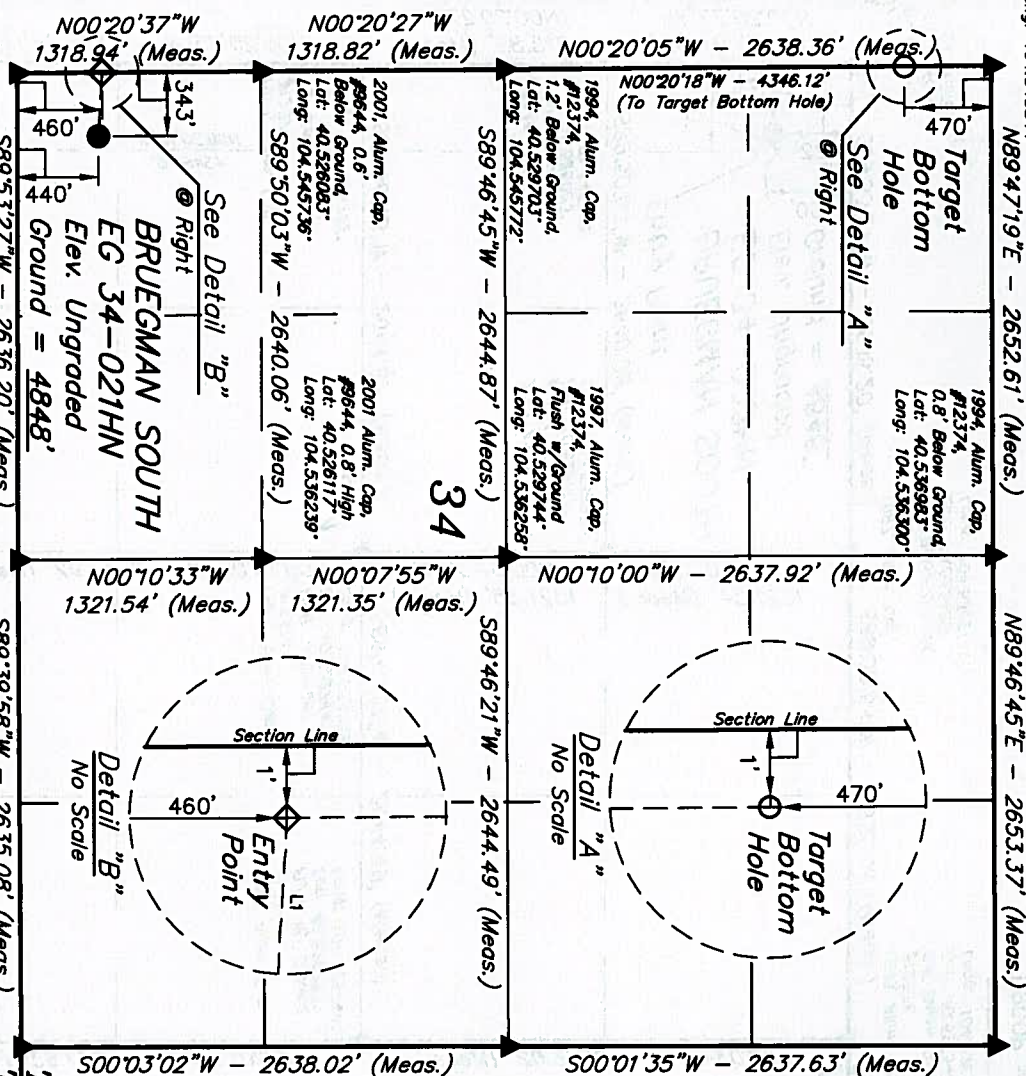
85 SOUTH 200 EAST - VERNAL, UTAH 84078

(435) 788-1017

SCALE	DATE SURVEYED:	DATE DRAWN:
1" = 1000'	09-06-13	09-10-13

D.S. K.H. J.W.

WEATHER	FILE
COOL	GREAT WESTERN OIL & GAS COMPANY



1994, Alum. Cap, -
#12374,
0.6' Below Ground,
Lat: 40.522464°
Long: 104.545697°

1997, Alum. Cap.
#12374,
0.8' Below Ground,
Lat: 40.522489°
Long: 104.536217°

1995, Alum. Cop,
#12374,
0.6' Below Ground,
Lat: 40.522544°
Long: 104.526739

```

MAD 83 (TARET1 BOT10TM HOLE)
LATITUDE = 403208.36" (40.535656)
LONGITUDE = 1043244.98" (104.545828)
MAD 27 (TARET1 BOT10TM HOLE)
LATITUDE = 403208.43" (40.535675)
LONGITUDE = 1043243.13" (104.545314)

```

NAD 83 (ENTRY POINT)	
LATITUDE = 40°31'25.41" (40.523725)	
LONGITUDE = 104°32'44.55" (104.545708)	
NAD 27 (ENTRY POINT)	
LATITUDE = 40°31'25.48" (40.523744)	
LONGITUDE = 104°32'42.70" (104.545194)	

NAD 83 (SURFACE LOCATION)	
LATITUDE =	40°31'25.23" (40.523675)
LONGITUDE =	104°32'40.12" (104.544478)
NAD 27 (SURFACE LOCATION)	
LATITUDE =	40°31'25.30" (40.523694)
LONGITUDE =	104°32'38.27" (104.543964)

PDOP = 1.9