

1801 Broadway
Suite 500
Denver, Colorado 80202



Shannon Hartnett
Regulatory Compliance Specialist
Tel: 303.398.0351
E-mail: shartnett@gwogco.com

November 21, 2013

Colorado Oil and Gas Conservation Commission
1120 Lincoln Street, Suite 801
Denver, Colorado 80203

RE: **Proposed Wellbore Spacing Unit**
Spaur Brothers EH 31-019HN

Niobrara New Drill
Township 7 North, Range 63 West, 6th P.M.
SESE Section 31
Weld County, Colorado

Dear Director:

Great Western Operating Company, LLC is planning to drill the above captioned well in accordance with the provisions of COGCC Rule 318(l)e(2).

Great Western proposed wellbore spacing unit consists of:

- **S/2S/2 Sec 31 T7N-R63W & N/2N/2 Sec 6 T6NR63W**

The 30 day notification time has passed and we have not received any objections to such well locations or proposed spacing unit, therefore Great Western hereby requests the Director to approve the above mentioned well. Great Western Operating Company, LLC respectfully requests that the COGCC review the enclosed map illustrating the proposed wellbore spacing unit.

Respectfully,

A handwritten signature in blue ink that reads "Shannon Hartnett".

Shannon Hartnett
Regulatory Compliance Specialist
Great Western Operating Company, LLC

T7N, R63W, 6th P.M.

GREAT WESTERN OIL & GAS COMPANY

Well location, SPAUR BROTHERS EH 31-019HN, located as shown in the SE 1/4 SE 1/4 of Section 31, T7N, R63W, 6th P.M., Weld County, Colorado.

BASIS OF ELEVATION

USGS COOPERATIVE BASE NETWORK CONTROL STATION, DESIGNATION 'M414'. NGS DATA SHEET LISTS THE NAVD 88 ELEVATION AS BEING 4600.58 FEET

BASIS OF BEARINGS

BASIS OF BEARINGS IS A G.P.S. OBSERVATION.

LEGEND:

— = 90° SYMBOL

● = PROPOSED WELL HEAD.

▲ = SECTION CORNERS LOCATED.

○ = TARGET BOTTOM HOLE

◇ = ENTRY POINT



SCALE

CERTIFICATE

THIS IS TO CERTIFY THAT THE ABOVE PLATS AND SURVEY FIELD NOTES OF ACTUAL SURVEYS MADE BY GREAT WESTERN OIL & GAS COMPANY ARE TRUE AND CORRECT TO THE BEST OF MY KNOWLEDGE AND BELIEF.

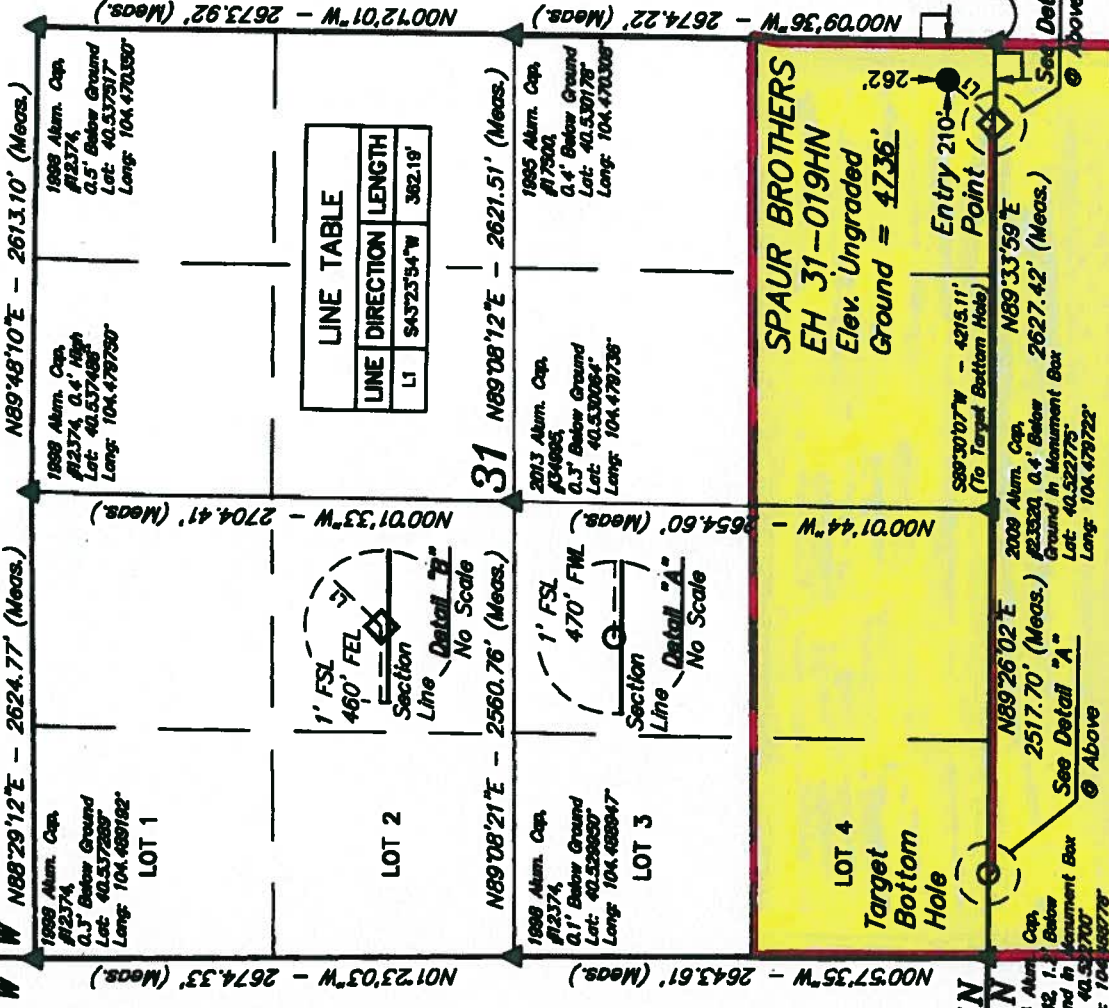
2009 Alum. Cap. #23320,
0.4' Below Ground in
Monument Box
Lat: 40.522839°
Long: 104.470272°

UNTAH ENGINEERING & LAND SURVEYING

86 SOUTH 200 EAST - VERNAL, UTAH 84078

(435) 789-1017

SCALE	1" = 1000'	DATE SURVEYED:	08-29-13	DATE DRAIN:	10-17-13
PARTY	Z.B. A.G. H.K.W.	REFERENCES	G.L.O. PLAT		
WEATHER	HOT	FILE	GREAT WESTERN OIL & GAS COMPANY		



LINE TABLE	
LINE	DIRECTION LENGTH
L1	S43°23'54"W 362.19'

1985 Alum. Cap. #17800,
0.4' Below Ground
Lat: 40.530178°
Long: 104.470308°

1985 Alum. Cap. #17800,
0.4' Below Ground
Lat: 40.530178°
Long: 104.470308°

1985 Alum. Cap. #17800,
0.4' Below Ground
Lat: 40.530178°
Long: 104.470308°

1985 Alum. Cap. #17800,
0.4' Below Ground
Lat: 40.530178°
Long: 104.470308°