



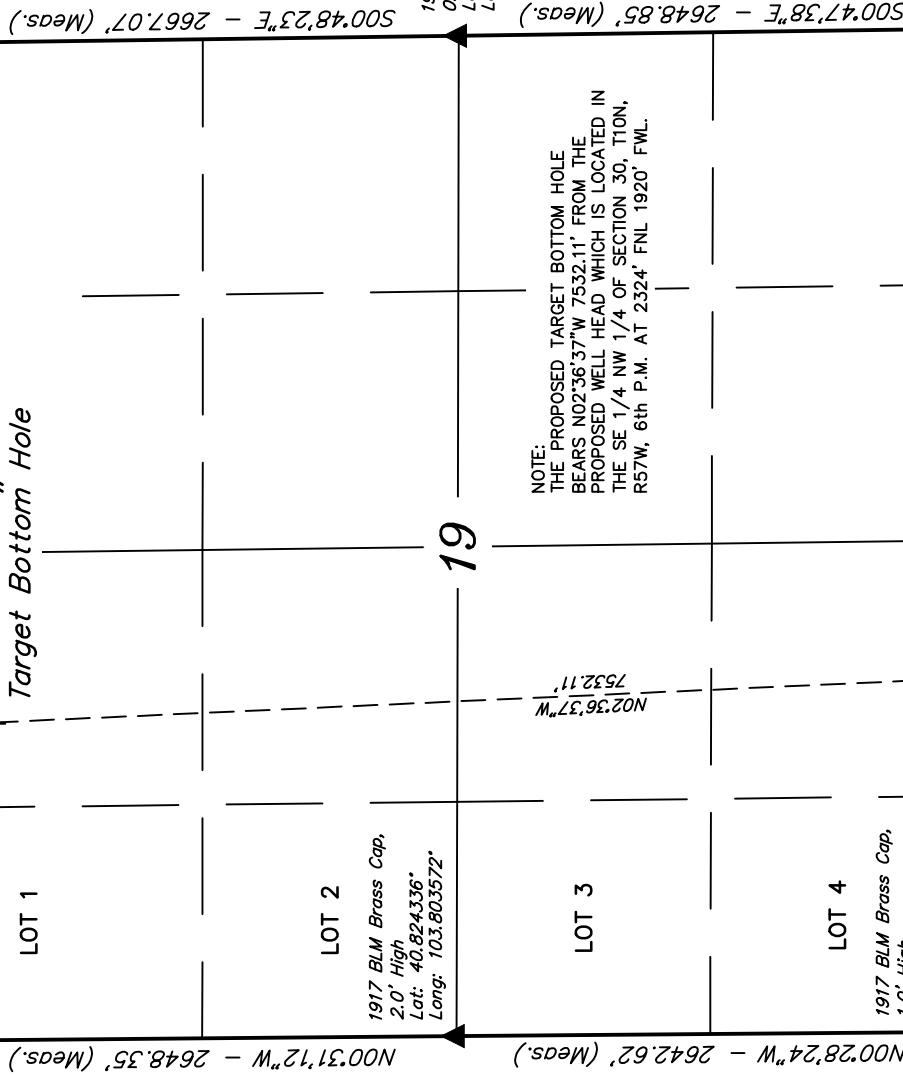
WHITING OIL & GAS CORP.

Well location, HORSETAIL #30F-1943 (TARGET BOTTOM HOLE), located as shown in the NE 1/4 of Section 19, T10N, R57W, 6th P.M., Weld County, Colorado.

## BASIS OF ELEVATION

SPOT ELEVATION LOCATED AT THE NORTHEAST CORNER OF SECTION 15, T9N, R58W, 6th P.M. TAKEN FROM THE GATEHOOK SPRING, QUADRANGLE, COLORADO, WELD COUNTY, 7-5 MINUTE QUAD (TOPOGRAPHIC MAP) PUBLISHED BY THE UNITED STATES DEPARTMENT OF THE INTERIOR, GEOLOGICAL SURVEY. SAID ELEVATION IS MARKED AS BEING 4679 FEET.

BASIS OF BEARINGS IS A G.P.S. OBSERVATION.



**CERTIFICATE**

THIS IS TO CERTIFY THAT THE ABOVE (PLA) WAS PREPARED FROM  
FIELD NOTES OF ACTUAL SURVEYS MADE BY ME OR UNDER MY  
SUPERVISION AND THAT THE SAME ARE TRUE AND CORRECT TO THE  
BEST OF MY KNOWLEDGE AND BELIEF.

1917 BLM Brass Cap,  
Flush W/ Ground  
Lat: 40.817025°  
Long: 103.784622°

UNTAH ENGINEERING & LAND SURVEYING  
85 SOUTH 200 EAST - VERNAL, UTAH 84078  
(435) 789-1017

*Surface Location*

 = 90° SYMBOL  
 = PROPOSED WELL HEAD.

▲ = SECTION CORNERS LOCATED.

LATITUDE = 40°49'52.84" (40.831344)  
LONGITUDE = 103°47'49.88" (103.797189)