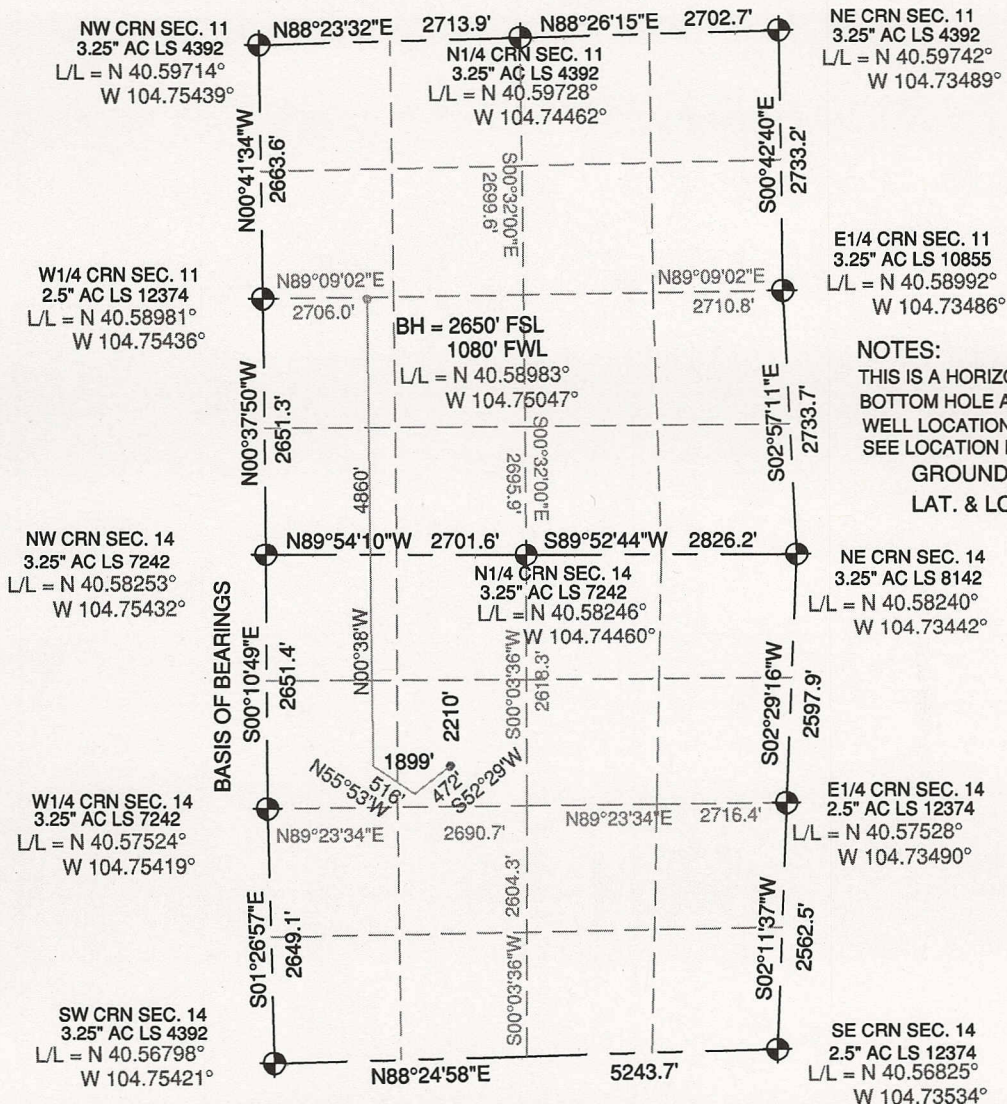


# WELL LOCATION CERTIFICATE

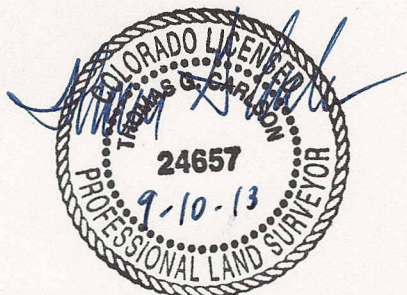
SECTIONS 11 & 14, TOWNSHIP 7 NORTH, RANGE 66 WEST, 6TH P.M.



## NOTES:

THIS IS A HORIZONTAL DRILL WELL.  
BOTTOM HOLE AT 2650' FSL, 1080' FWL, S11.  
WELL LOCATION FALLS IN A CORN FIELD.  
SEE LOCATION DRAWING FOR IMPROVEMENTS.  
GROUND ELEVATION = 4925'  
LAT. & LONG. = N 40.57640°  
W 104.74738°

I HEREBY STATE TO PDC ENERGY THAT THE SURFACE LOCATION FOR THE PROPOSED WELL THORNTON 14K-441 IS LOCATED 2210' FNL & 1899' FWL, SEC. 14, T7N, R66W, 6PM.

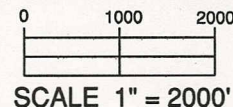


THOMAS G. CARLSON, PLS 24657  
HORSESHOE SURVEYING, LLC

THIS IS NOT A MONUMENTED BOUNDARY SURVEY, IT IS ONLY A  
DRAWING INTENDED TO DEPICT THE WELL LOCATION TO SECTION LINES.

## LEGEND

- FOUND MONUMENT
- PROPOSED WELL
- BOTTOM HOLE



SCALE 1" = 2000'

ELEVATION SOURCE = USGS 7.5' QUAD.MAP CONTOURS  
NGVD 1929 DATUM.

LAT. & LONG. ARE DIFFERENTIALLY CORRECTED (WGS'84)  
USING (DGPS) WITH (PDOP) VALUE OF 1.5.

SHOWN DISTANCES ARE FIELD MEASURED WITH  
EXTERIOR SECTION LINES DRAWN TO SCALE.

DISTANCES TO WELL SHOWN PERPENDICULAR  
TO SECTION LINES.

PREPARED BY: HORSESHOE SURVEYING, LLC  
PO BOX 150458  
LAKEWOOD, CO 80215  
(720)872-0196

WELL NAME: THORNTON 14K-441

LOCATION: WELD COUNTY, CO  
NW1/4, SEC. 14, T7N, R66W, 6TH P.M.

DRAWING DATE:  
9-10-13

FIELD DATE:  
7-20-13

BY: TGC

CHKD:

JOB NO.

SHEET NO.

1 OF 1