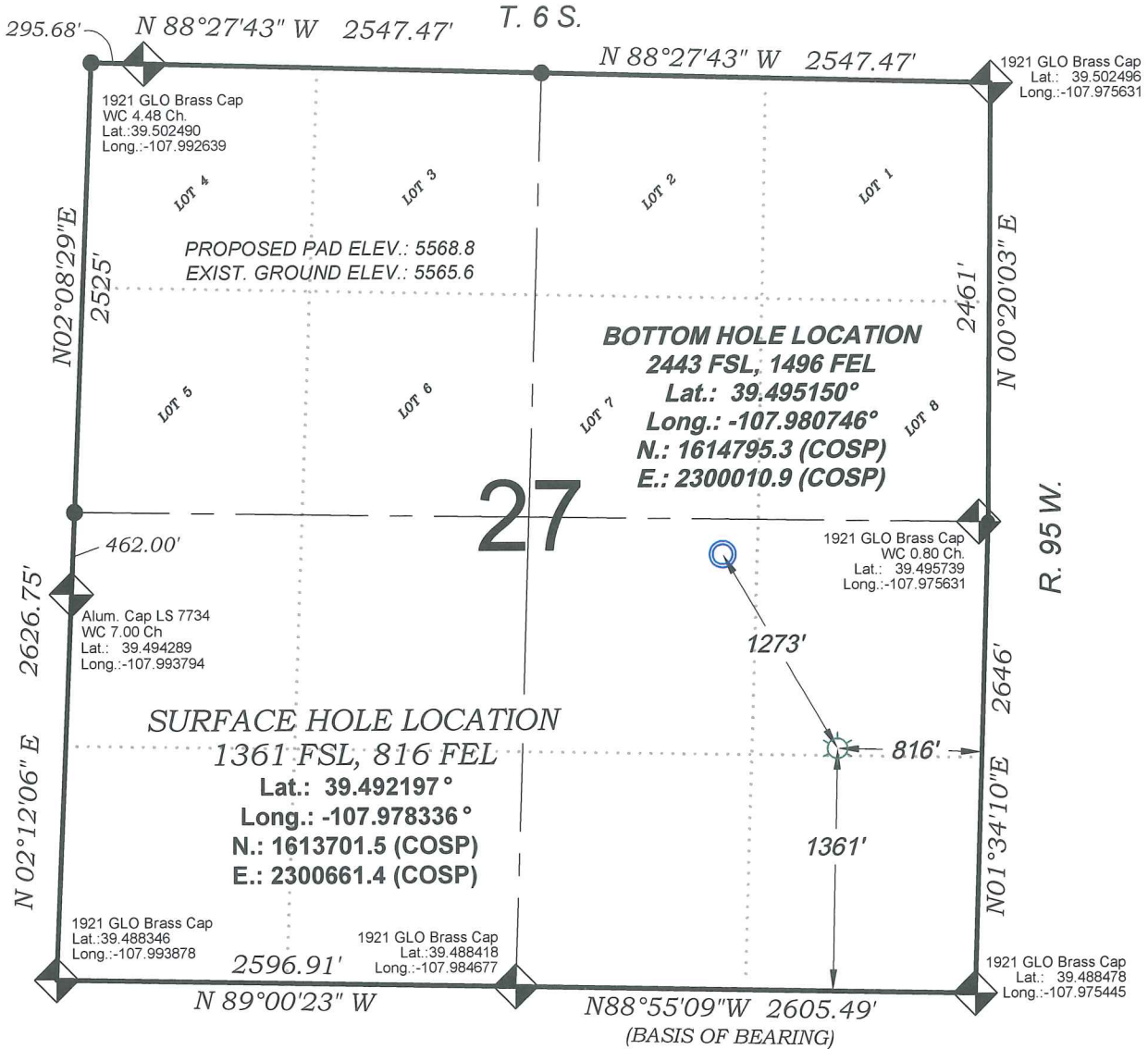
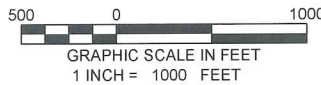


# Federal PA 33-27



THERE ARE NO VISIBLE IMPROVEMENTS WITHIN 400' OF THIS LOCATION



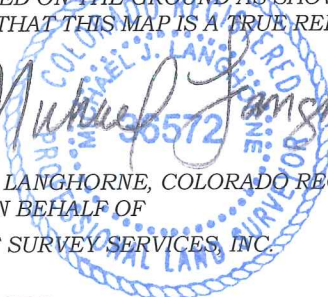
## - LEGEND -

- FIELD LOCATED SECTION MONUMENTS AS DESCRIBED
- FIELD SURVEYED WELL LOCATION
- CALCULATED BOTTOM HOLE LOCATION
- CALCULATED SECTION CORNER LOCATION

### SURVEYORS STATEMENT

I, MICHAEL J. LANGHORNE, A REGISTERED LAND SURVEYOR IN THE STATE OF COLORADO DO HEREBY CERTIFY THAT THE SURVEY SHOWN HEREON WAS PREPARED UNDER MY DIRECT SUPERVISION AND HAS BEEN STAKED ON THE GROUND AS SHOWN ON THE PLAT AND CHECKING THAT THIS MAP IS A TRUE REPRESENTATION THEREOF.

*Michael J. Langhorne*



MICHAEL J. LANGHORNE, COLORADO REGISTRATION NO. 36572 FOR AND ON BEHALF OF BOOKCLIFF SURVEY SERVICES, INC.

### REFERENCES

- 1) RESURVEY of a PORTION and EXTENSION SURVEY, T. 6 S., R. 95 W., 6 th P.M (GLO PLAT)
- 2) U.S.G.S. QUAD: RULISON and ANVIL POINTS, CO

### NOTES

- 1) ELEVATIONS BASED ON N.A.V.D. 1988 PUBLISHED COORDINATES.
- 2) LATITUDES AND LONGITUDES ARE BASE ON NAD 83, PUBLISHED COORDINATES
- 3) STATE PLANE COORDINATES ARE BASED ON COLORADO CENTRAL ZONE, U.S. SURVEY FEET.
- 4) ELEVATION MASK SET TO 15°
- 5) GPS OPERATOR J. KIRKPATRICK, OBSERVED A PDOP 1.3 ON SURVEY POINT NUMBER 406.
- 6) SURFACE AND BOTTOM HOLE LOCATIONS ARE MEASURED 90° FROM SECTION LINES.

**WELL LOCATION PLAT Prepared for:**  
 WPX Energy Rocky Mountain, LLC

*NE1/4 SE1/4, SECTION 27  
 T. 6 S., R. 95 W. of the 6th. P.M.  
 GARFIELD COUNTY, COLORADO*

136 East Third Street  
 Rifle, Colorado  
 81650 Ph. (970)  
 625-2720 Fax (970)  
 625-2773

**BOOKCLIFF**  
 Survey Services, Inc.

SURVEY DATE:	10/29/12
MAP DATE:	7/11/13
SCALE:	1" = 1000'
PLAT:	1 of 1
PROJECT:	Valley

K:\2012 WILLIAMS VALLEY\PA 33-27\PA 33-27.dwg, 7/11/2013 2:54:03 PM